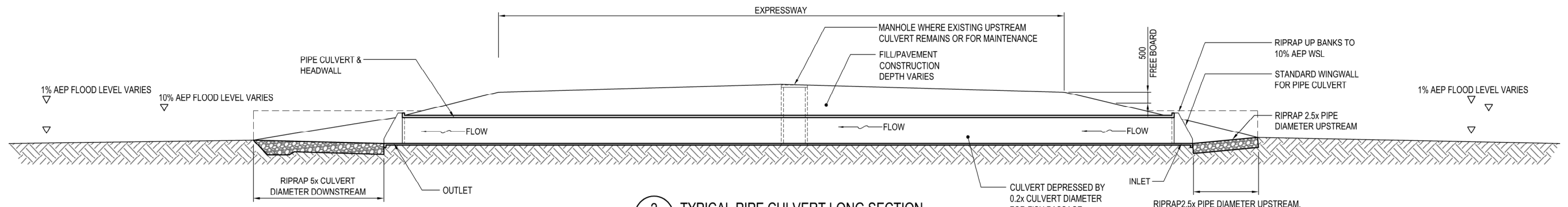
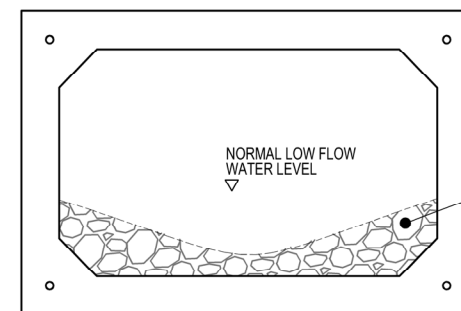


1 TYPICAL BOX CULVERT LONG SECTION
303 SCALE 1 : 200



2 TYPICAL PIPE CULVERT LONG SECTION
303 SCALE 1 : 200



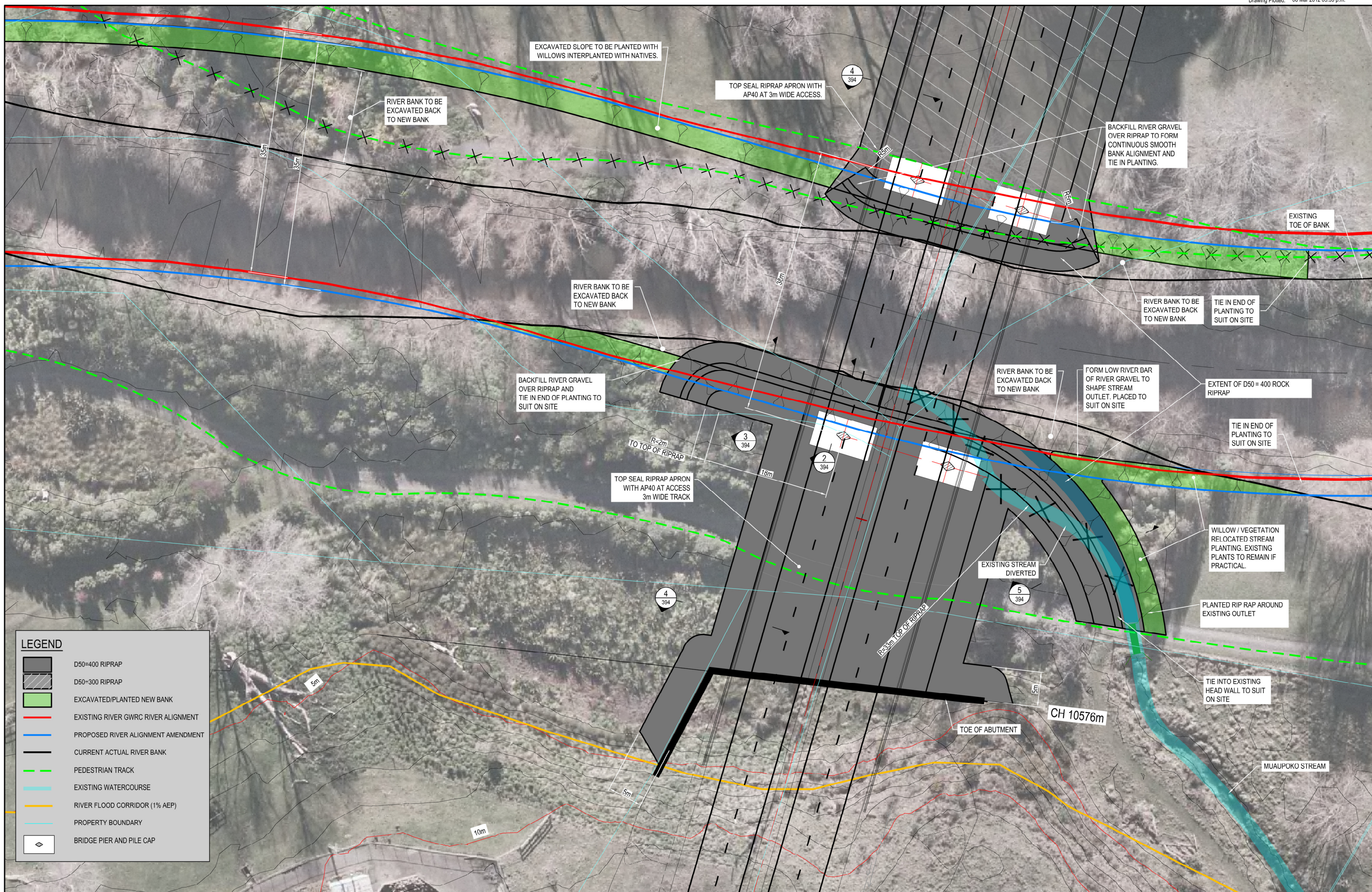
3 TYPICAL BOX CULVERT CROSS SECTION
SCALE 1 : 50

NOTES:

Original Scale (A3)			
As Shown			
1	AEE LODGEMENT	NRN	15.03.12
Revision:	Amendment	Approved:	Date:



Project: MACKAYS TO PEKA PEKA EXPRESSWAY	
Title: CULVERT LONG SECTION	
Status: FOR CONSENTING	Rev. 1
Document ID: M2PP-SAR-DWG	Drawing No: CV-SW-304



LEGEND

	D50=400 RIPRAP
	D50=300 RIPRAP
	EXCAVATED/PLANTED NEW BANK
	EXISTING RIVER GWRC RIVER ALIGNMENT
	PROPOSED RIVER ALIGNMENT AMENDMENT
	CURRENT ACTUAL RIVER BANK
	PEDESTRIAN TRACK
	EXISTING WATERCOURSE
	RIVER FLOOD CORRIDOR (1% AEP)
	PROPERTY BOUNDARY
	BRIDGE PIER AND PILE CAP

NOTES:
 1. PLANTED RIP RAP TO FLOOD PLAIN UNDER THE BRIDGE NOT SHOWN. REFER SECTION 1 ON DRAWING CV-SW-393.

Original Scale (A3)			
1:500			
1	AEE LODGEMENT	NRN	15.03.12
Revision:	Amendment	Approved:	Date:



Project: **MACKAYS TO PEKA PEKA EXPRESSWAY**

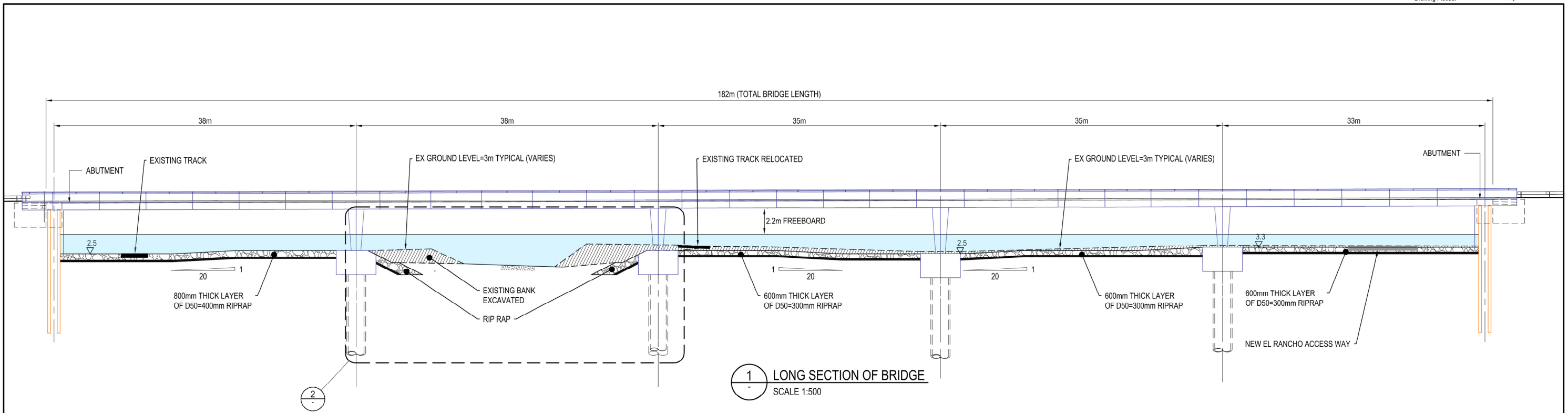
Title: **WAIKANAĒ RIVER BRIDGE: RIP RAP PLAN**

Status: FOR CONSENTING

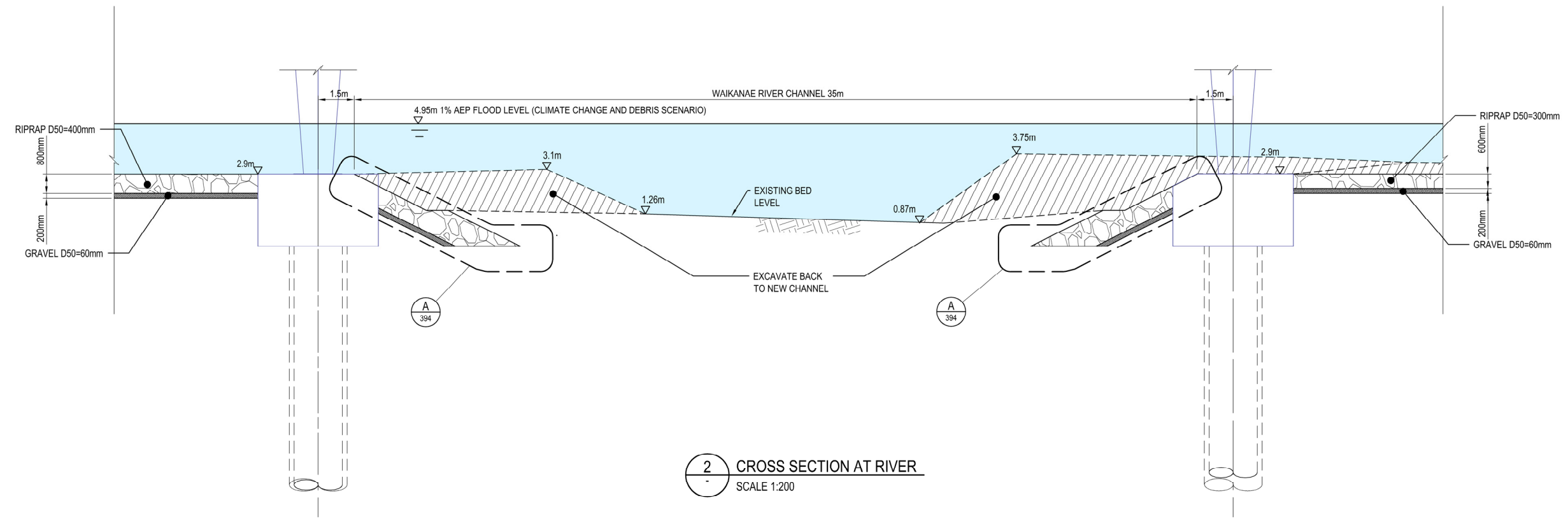
Document ID: M2PP-AEE-DWG

Drawing No: **CV-SW-392**

Rev: 1



1 LONG SECTION OF BRIDGE
SCALE 1:500



2 CROSS SECTION AT RIVER
SCALE 1:200

NOTES:

Original Scale (A3)			
As Shown			
1 AEE LODGEMENT	NRN	15.03.12	
Revision: Amendment	Approved:	Date:	



Project: **MACKAYS TO PEKA PEKA EXPRESSWAY**

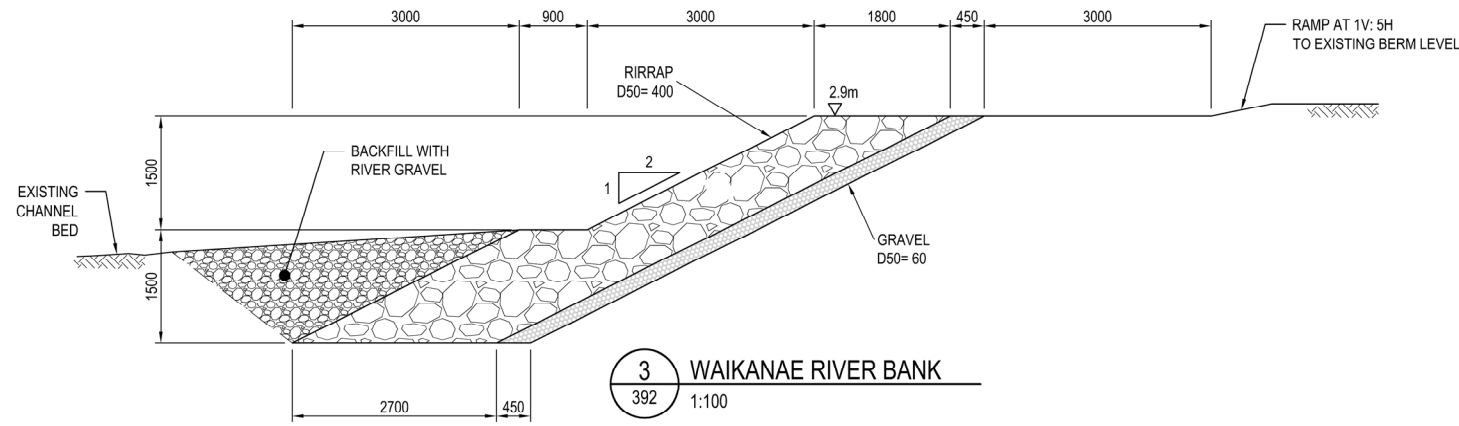
Title: **WAIKANAE RIVER BRIDGE: BRIDGE AND RIVER SECTION**

Status: FOR CONSENTING

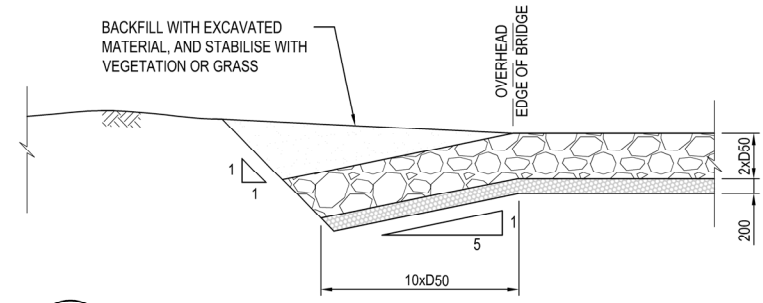
Document ID: M2PP-AEE-DWG

Drawing No: **CV-SW-393**

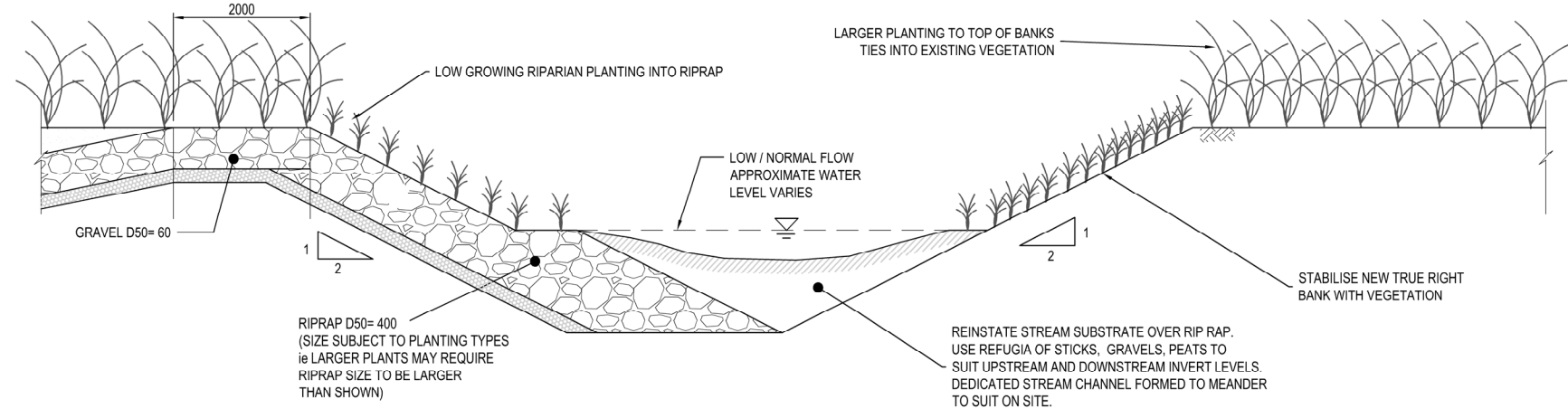
Rev: 1



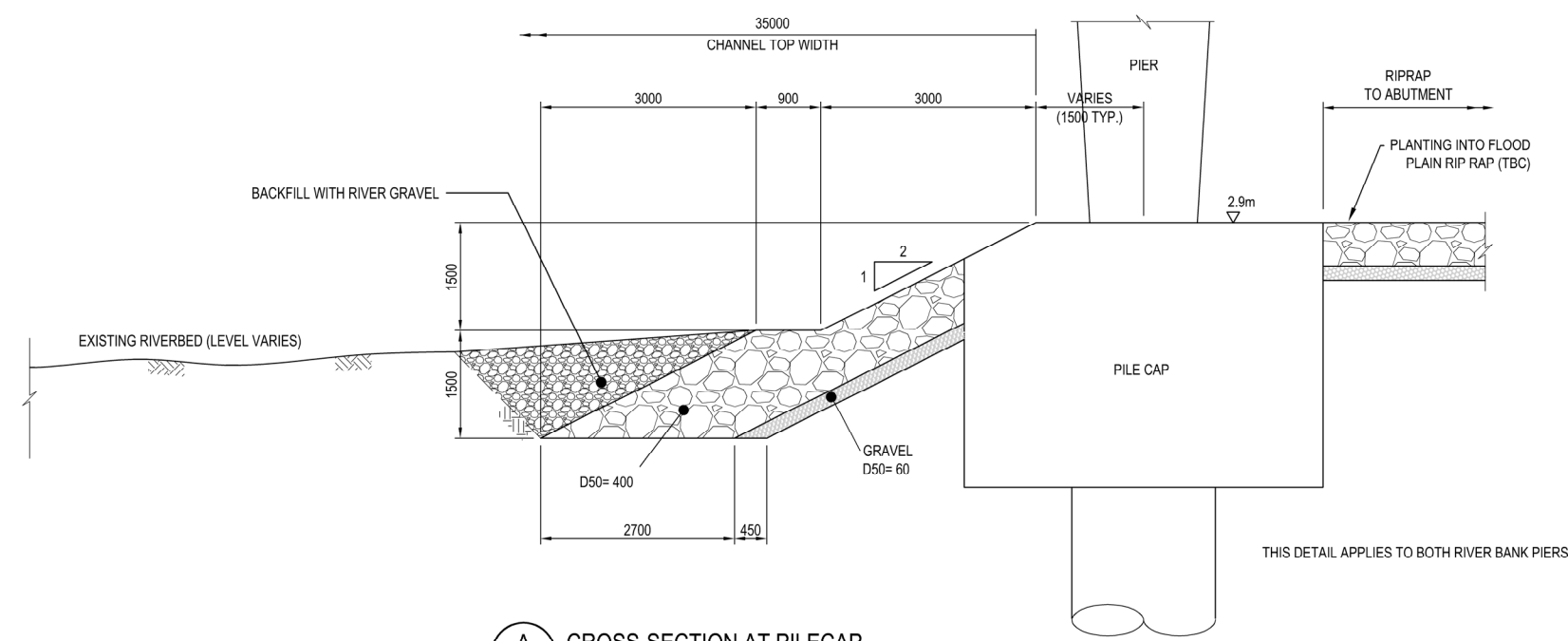
3 WAIKANAE RIVER BANK
392 1:100



4 LEADING/TRAILING EDGE DETAIL AT FLOODPLAIN APRON
(DETAIL SIMILAR AT ABUTMENTS)
392 1:100



5 CROSS-SECTION AT MUAUPOKO STREAM REALIGNMENT
392 1:100



A CROSS-SECTION AT PILECAP
393 1:100

NOTES:

Original Scale (A3)	
As Shown	

1	AEE LODGEMENT	NRN	15.03.12
Revision:	Amendment	Approved:	Date:



Project: **MACKAYS TO PEKA PEKA EXPRESSWAY**

Title: **WAIKANAE RIVER BRIDGE: BRIDGE AND RIVER DETAILS**

Status: FOR CONSENTING

Document ID: M2PP-AEE-DWG

Drawing No: **CV-SW-394**

Rev: 1