

Legend

- Cadastral bdy
- Traffic line
- Road surface
- Bridge
- Bridge barrier
- Bund crown
- Noise barrier

Initials: SW
Date: 18/8/2011
Calculation No: 1011

A3 Scale 1:5000

MARSHALL DAY
Acoustics

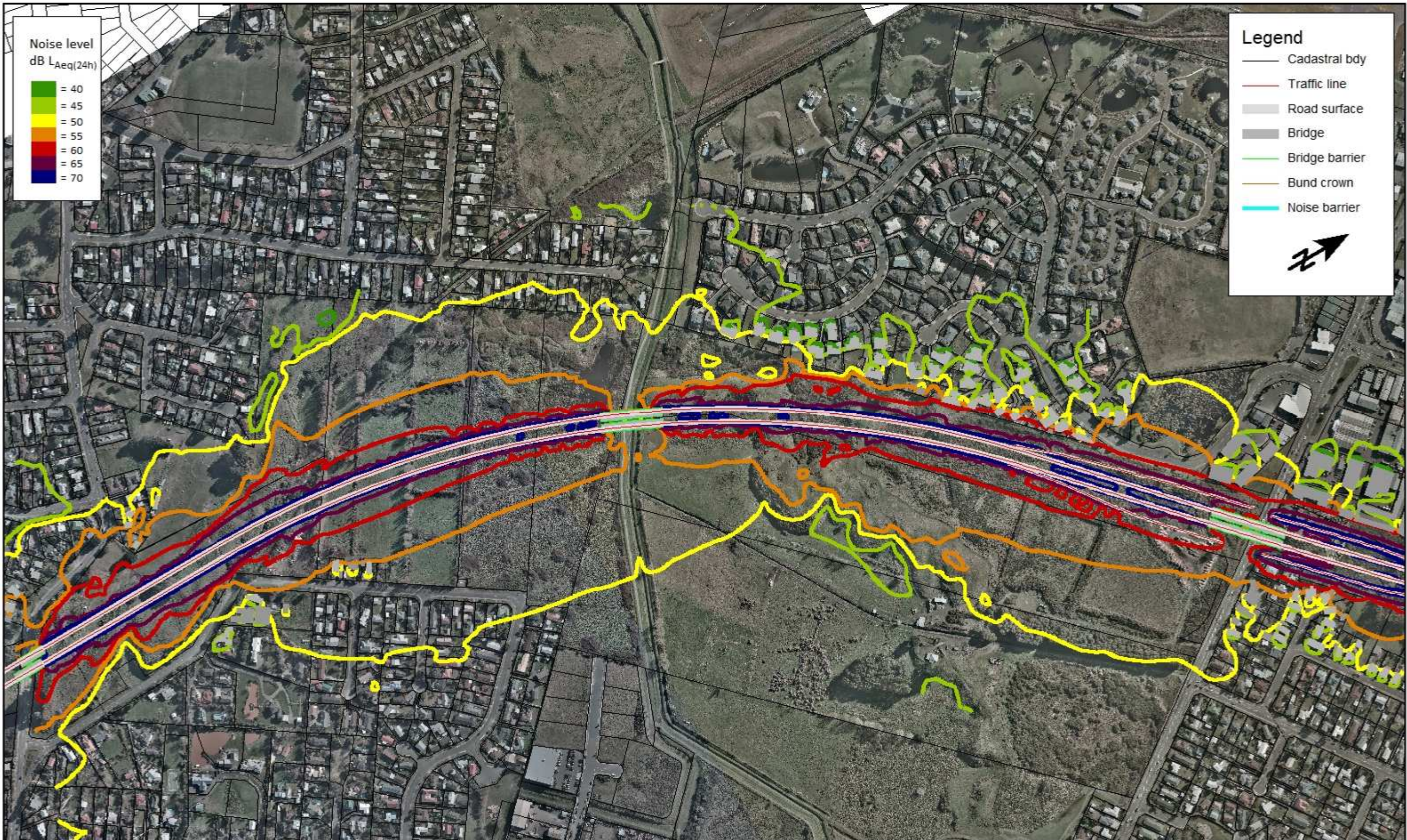
Mackays to Peka Peka

MACKAYS TO PEKA PEKA EXPRESSWAY
Sector 1
Do-minimum Scenario

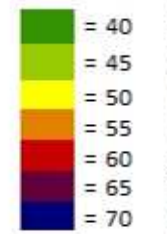
NOISE LEVEL
CONTOURS
SHEET 1 OF 18

Document Set:
M2PP-AEE-DWG

Drawing No.:
EN-NV-100



Noise level
dB LAeq(24h)



Legend

- Cadastral bdy
- Traffic line
- Road surface
- Bridge
- Bridge barrier
- Bund crown
- Noise barrier



Initials: SW
Date: 18/8/2011
Calculation No: 1021

MARSHALL DAY
Acoustics

**MACKAYS TO PEKA PEKA EXPRESSWAY
Sector 2
Do-minimum Scenario**

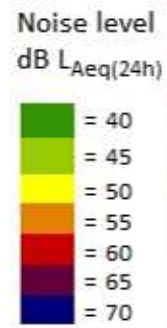
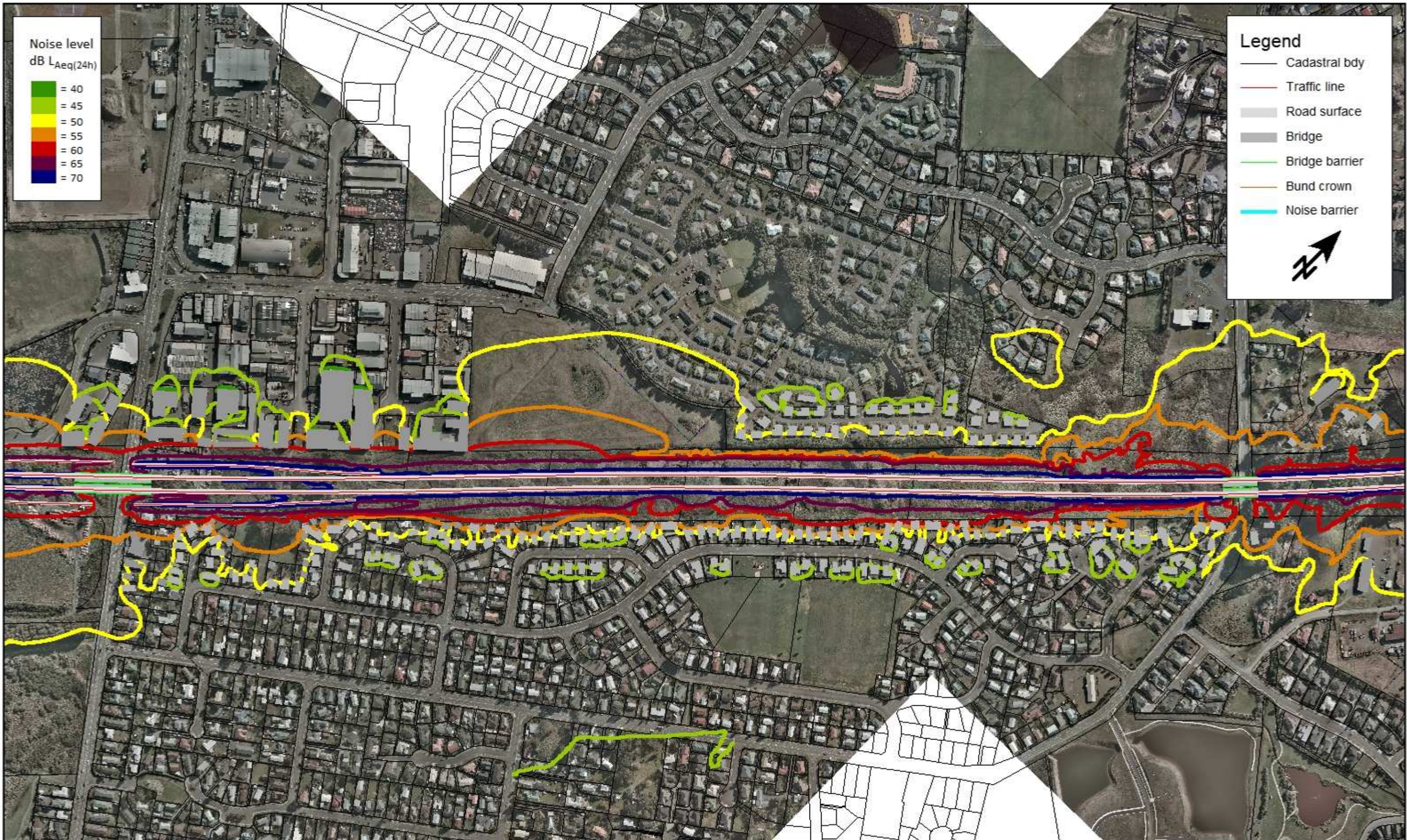
NOISE LEVEL
CONTOURS
SHEET 2 OF 18

Document Set:
M2PP-AEE-DWG

Drawing No.:
EN-NV-101

A3 Scale 1:5000
0 25 50 100 150 200 m

NEW ZEALAND TRANSPORT AGENCY
Mackays to Peka Peka



Legend

- Cadastral bdy
- Traffic line
- Road surface
- Bridge
- Bridge barrier
- Bund crown
- Noise barrier

Initials: SW
Date: 18/8/2011
Calculation No: 1021

A3 Scale 1:5000
0 25 50 100 150 200 m

MARSHALL DAY
Acoustics

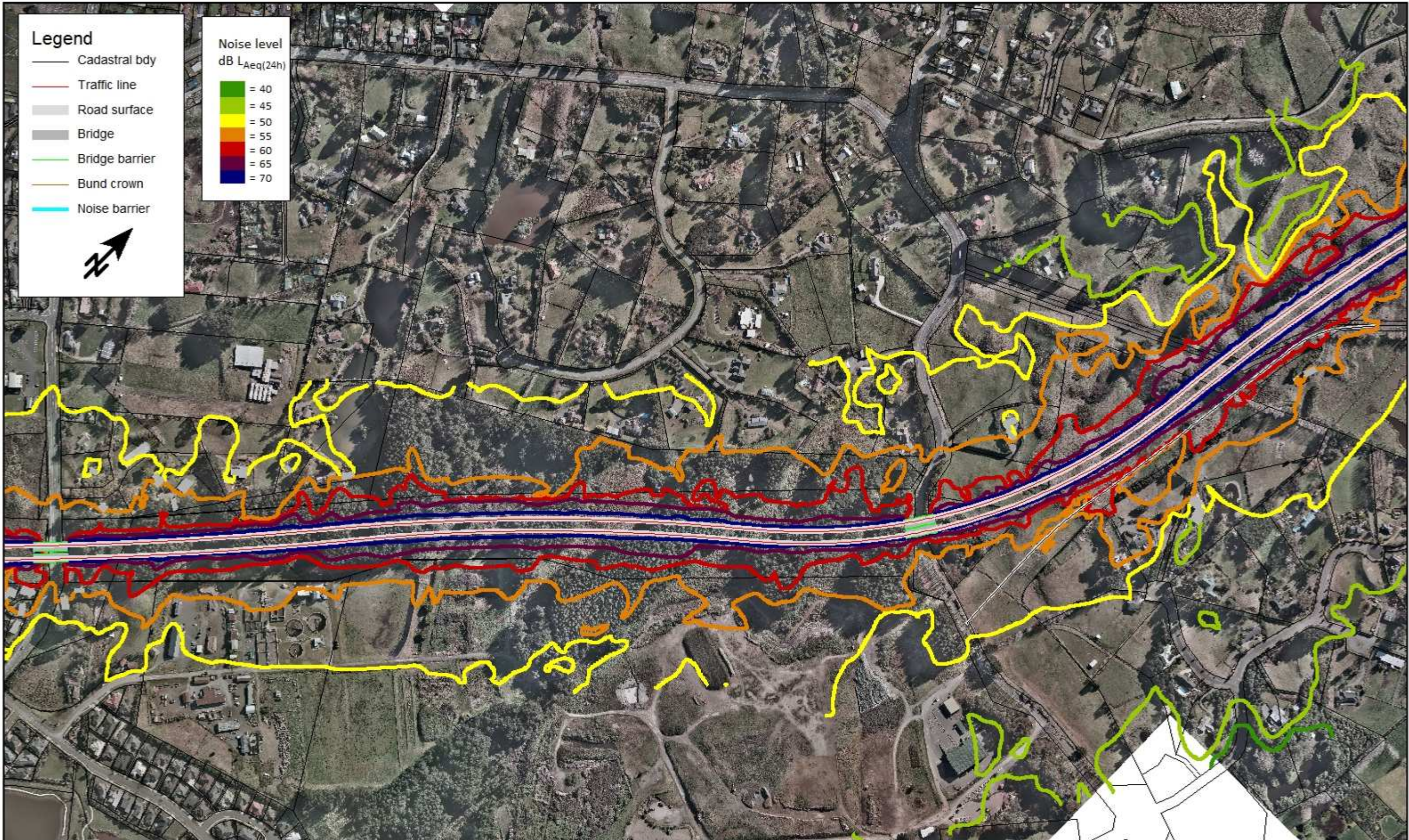
Mackays to Peka Peka

MACKAYS TO PEKA PEKA EXPRESSWAY
Sector 2
Do-minimum Scenario

NOISE LEVEL
CONTOURS
SHEET 3 OF 18

Document Set:
M2PP-AEE-DWG

Drawing No.:
EN-NV-102



Initials: SW
 Date: 20/8/2011
 Calculation No: 1031

A3 Scale 1:5000
 0 25 50 100 150 200 m

MARSHALL DAY
 Acoustics

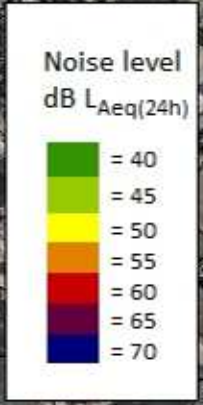
NETRANSPORT AGENCY
 Mackays to Peka Peka

MACKAYS TO PEKA PEKA EXPRESSWAY
Sector 3
Do-minimum Scenario

NOISE LEVEL
 CONTOURS
 SHEET 4 OF 18

Document Set:
 M2PP-AEE-DWG

Drawing No.:
 EN-NV-103



Legend

- Cadastral bdy
- Traffic line
- Road surface
- Bridge
- Bridge barrier
- Bund crown
- Noise barrier

Initials: SW
Date: 20/8/2011
Calculation No: 1031

A3 Scale 1:5000

MARSHALL DAY
Acoustics

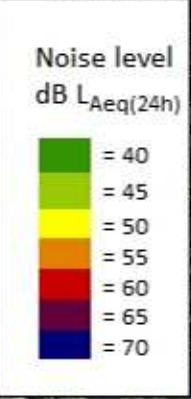
Mackays to Peka Peka

MACKAYS TO PEKA PEKA EXPRESSWAY
Sector 3
Do-minimum Scenario

NOISE LEVEL
CONTOURS
SHEET 5 OF 18

Document Set:
M2PP-AEE-DWG

Drawing No.:
EN-NV-104



Initials: SW
Date: 20/8/2011
Calculation No: 1031

A3 Scale 1:5000
0 25 50 100 150 200 m

MARSHALL DAY
Acoustics

Mackays to Peka Peka

MACKAYS TO PEKA PEKA EXPRESSWAY
Sector 3
Do-minimum Scenario

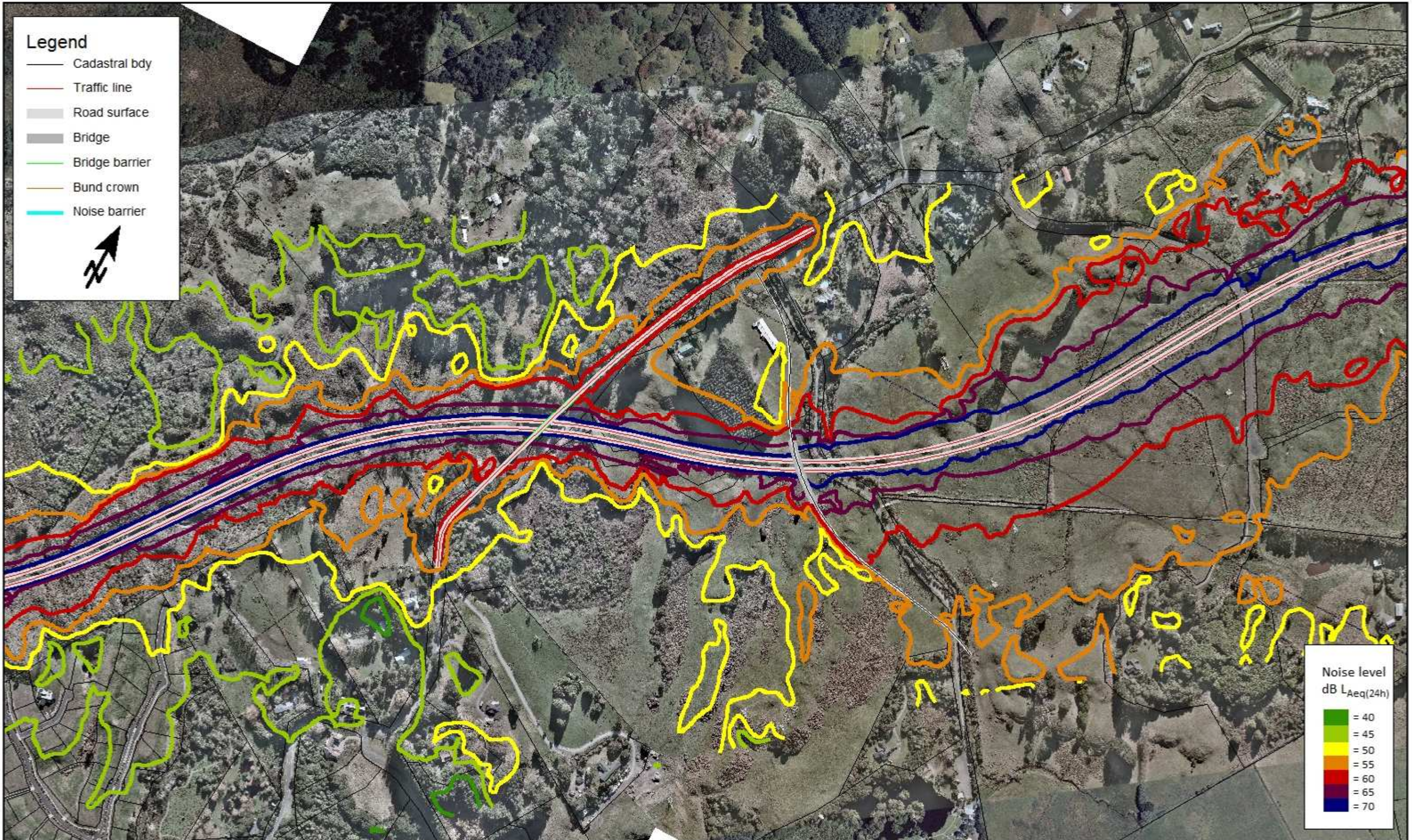
NOISE LEVEL
CONTOURS
SHEET 6 OF 18

Document Set:
M2PP-AEE-DWG

Drawing No.:
EN-NV-105

Legend

- Cadastral bdy
- Traffic line
- Road surface
- Bridge
- Bridge barrier
- Bund crown
- Noise barrier



**Noise level
dB $L_{Aeq}(24h)$**

- = 40
- = 45
- = 50
- = 55
- = 60
- = 65
- = 70

Initials: SW
Date: 20/8/2011
Calculation No: 1041

A3 Scale 1:5000
0 25 50 100 150 200 m

MARSHALL DAY
Acoustics

NEW ZEALAND TRANSPORT AGENCY
Mackays to Peka Peka

**MACKAYS TO PEKA PEKA EXPRESSWAY
Sector 4
Do-minimum Scenario**

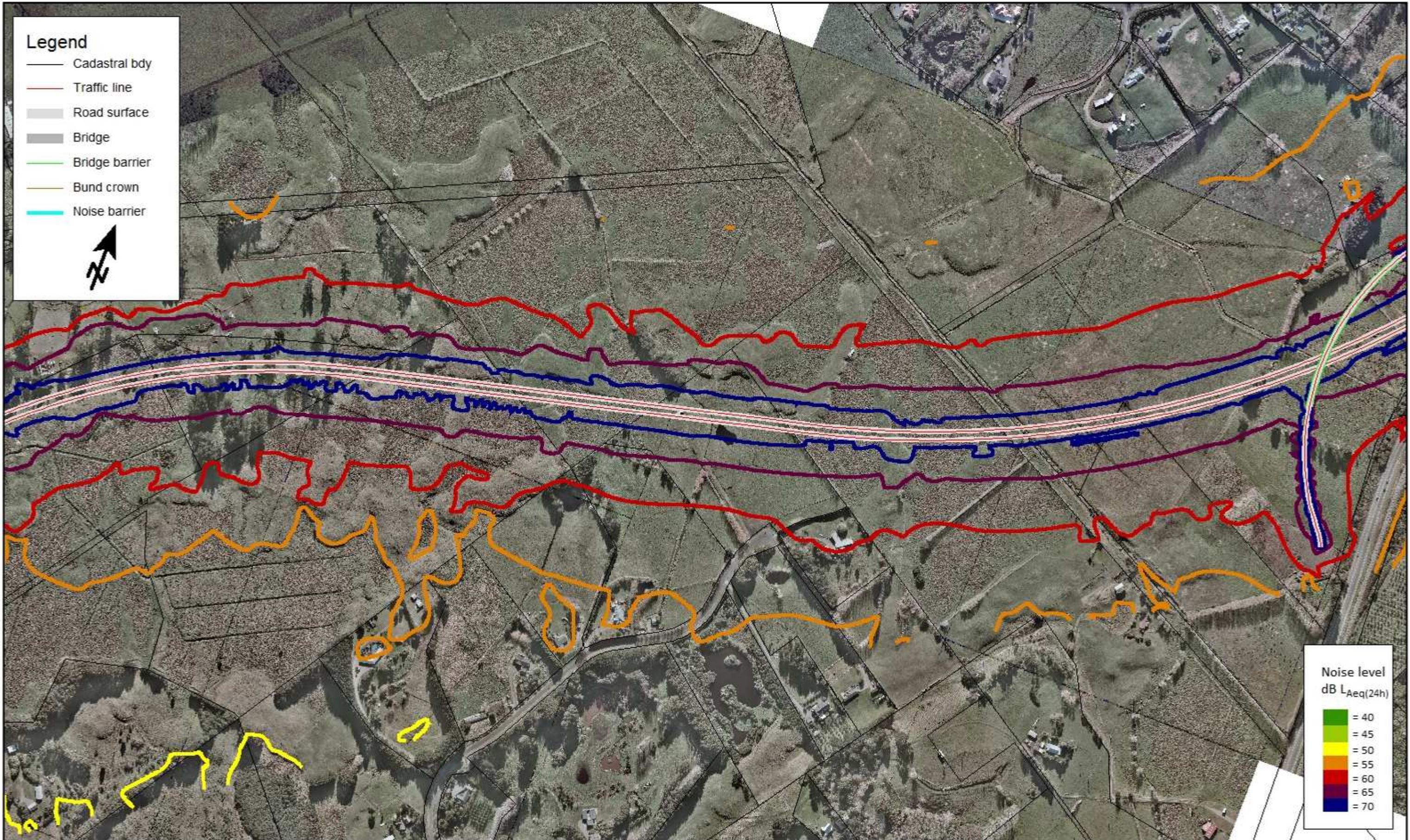
NOISE LEVEL
CONTOURS
SHEET 7 OF 18

Document Set:
M2PP-AEE-DWG

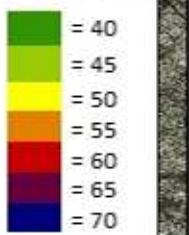
Drawing No.:
EN-NV-106

Legend

- Cadastral bdy
- Traffic line
- Road surface
- Bridge
- Bridge barrier
- Bund crown
- Noise barrier



Noise level
dB $L_{Aeq}(24h)$



Initials: SW
Date: 20/8/2011
Calculation No: 1041

MARSHALL DAY
Acoustics

**MACKAYS TO PEKA PEKA EXPRESSWAY
Sector 4
Do-minimum Scenario**

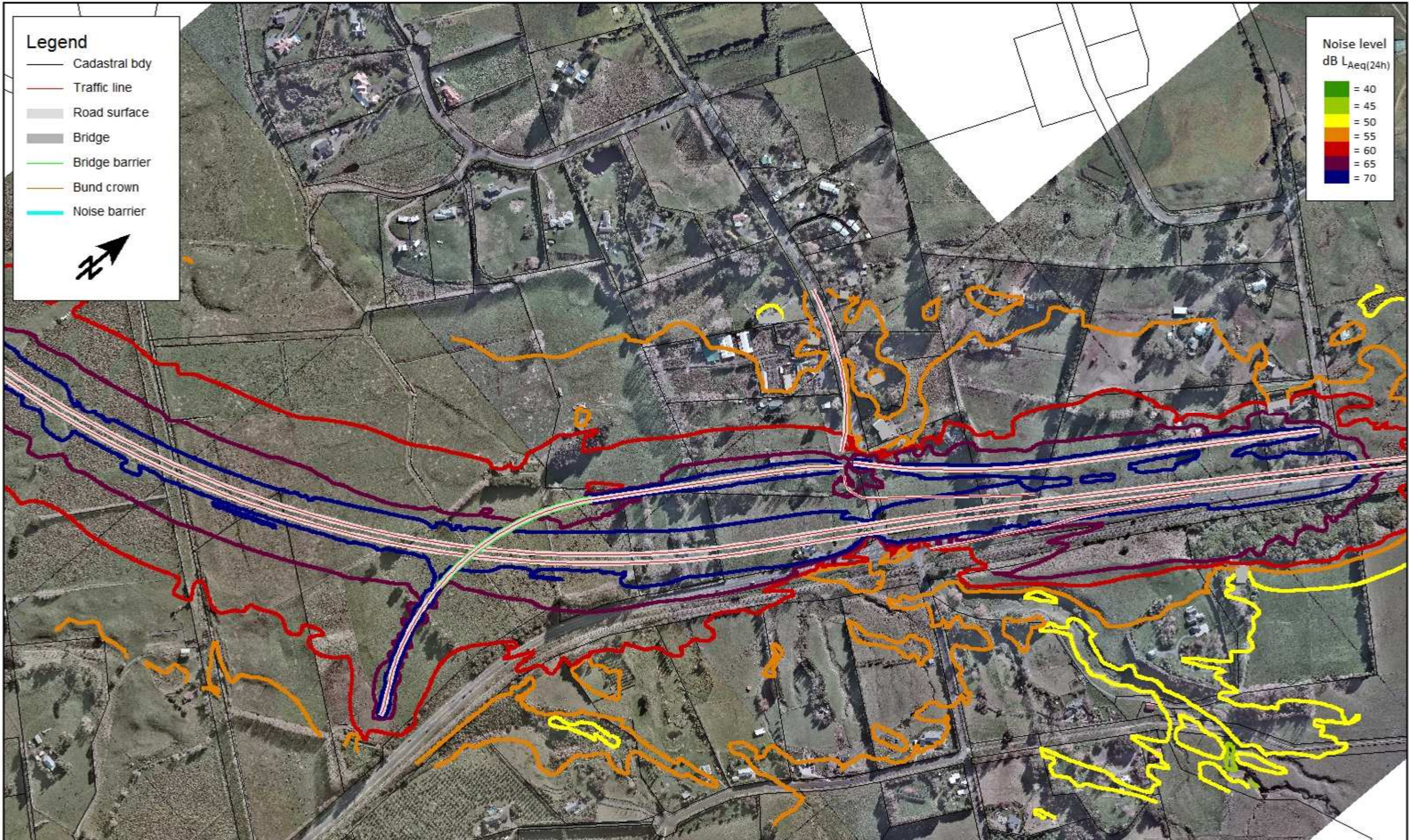
NOISE LEVEL
CONTOURS
SHEET 8 OF 18

Document Set:
M2PP-AEE-DWG

Drawing No.:
EN-NV-107

A3 Scale 1:5000
0 25 50 100 150 200 m

NETRANSPORT
AGENCY
Mackays to Peka Peka



Initials: SW
 Date: 20/8/2011
 Calculation No: 1041

A3 Scale 1:5000
 0 25 50 100 150 200 m

MARSHALL DAY
 Acoustics

NEW ZEALAND TRANSPORT AGENCY
 Mackays to Peka Peka

MACKAYS TO PEKA PEKA EXPRESSWAY
Sector 4
Do-minimum Scenario

NOISE LEVEL
 CONTOURS
 SHEET 9 OF 18

Document Set:
 M2PP-AEE-DWG

Drawing No.:
 EN-NV-108