

LONG TERM STORMWATER WETLAND TO BE UTILISED AS SRP #12  
 AREA = 0.38 Ha  
 VOLUME = 76 m<sup>3</sup>  
 DIMENSIONS 19.0 m BY 8.5 m

LONG TERM STORMWATER WETLAND TO BE UTILISED AS SRP #13  
 AREA = 3.92 Ha  
 VOLUME = 784 m<sup>3</sup>  
 DIMENSIONS 52.5 m BY 19.5 m

**KEY:**

SEDIMENT RETENTION POND	
DRAINAGE SWALE	
EARTH/TOPSOIL BUND	
DIRTY WATER DIVERSION	
SILT FENCE	
SUPER SILT FENCE	
DECANT	
SRP CATCHMENT AREA	
ROCK FILTERS	
CULVERT	
FUTURE SW DEVICE	
CYCLEWAY	

- NOTES**
1. KAKARIKI STREAM TO UTILISE CULVERT METHODOLOGY IN EROSION & SEDIMENT CONTROL PLAN.
  2. SRP#12 TO ALSO BE UTILISED FOR NGARARA RD WORKS.
  3. SUPER SILT FENCE TO BE INSTALLED TO PROTECT NEW STREAM CHANNEL ONCE CONSTRUCTED.
  4. CYCLEWAY CONTROLS INCORPORATED WITH OTHER ALIGNMENT CONTROLS. STAGED ESTABLISHMENT AND STABILISATION TO BE UNDERTAKEN.

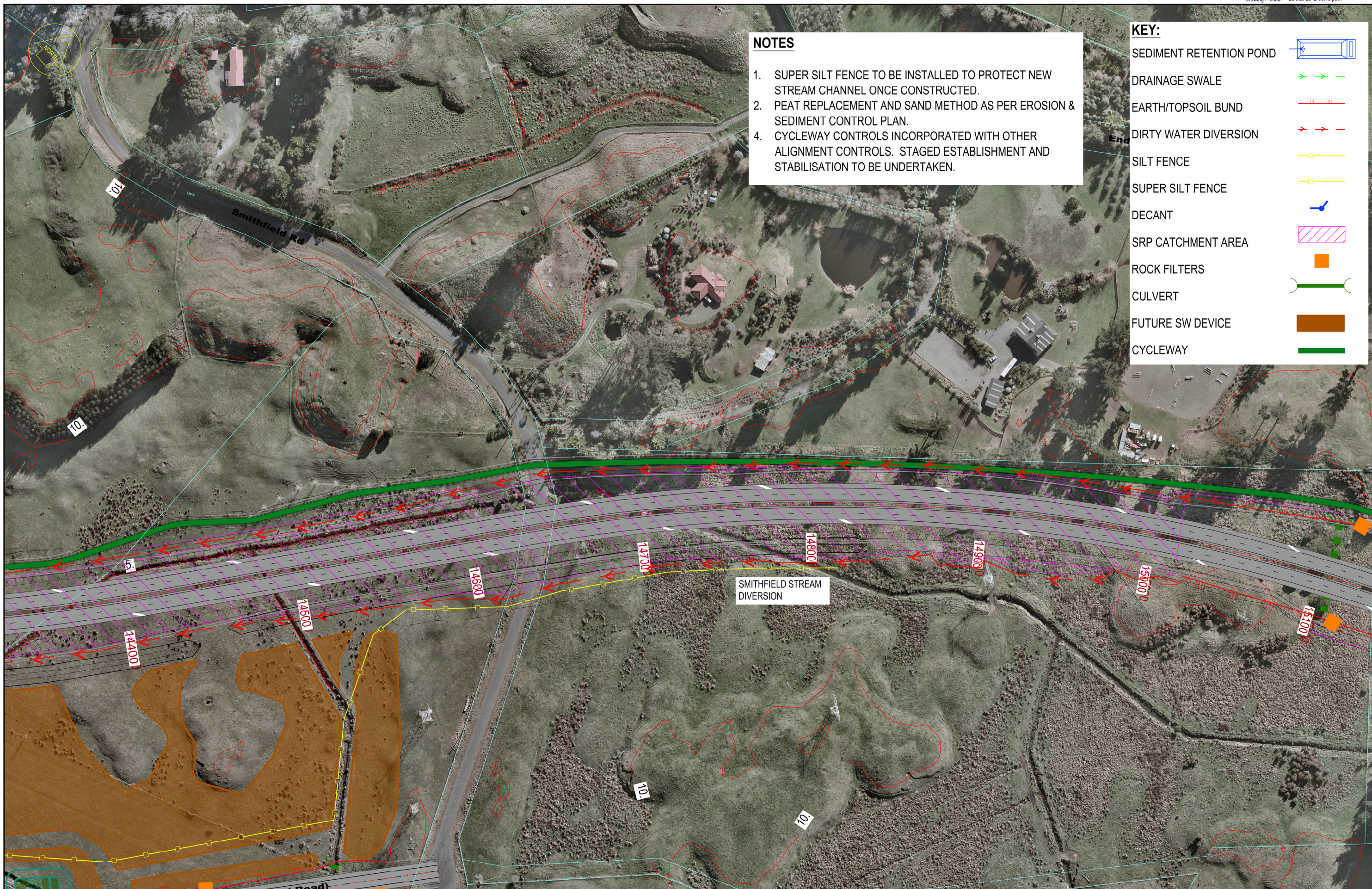
NOTES:

Original Scale (A3)	1:2000
---------------------	--------

1	AEE LODGEMENT	GJR	15.03.12
Revision	Amendment	Approved	Date



Project: <b>MACKAYS TO PEKA PEKA EXPRESSWAY</b>	
Title: <b>EROSION &amp; SEDIMENT CONTROL CHAINAGES 13800 TO 14400</b>	
Status: -	Rev. -
Document ID: M2PP-AEE-DWG	Rev. -
Drawing No: <b>CV-CM-222</b>	1



**NOTES**

1. SUPER SILT FENCE TO BE INSTALLED TO PROTECT NEW STREAM CHANNEL ONCE CONSTRUCTED.
2. PEAT REPLACEMENT AND SAND METHOD AS PER EROSION & SEDIMENT CONTROL PLAN.
4. CYCLEWAY CONTROLS INCORPORATED WITH OTHER ALIGNMENT CONTROLS. STAGED ESTABLISHMENT AND STABILISATION TO BE UNDERTAKEN.

**KEY:**

SEDIMENT RETENTION POND	
DRAINAGE SWALE	
EARTH/TOPSOIL BUND	
DIRTY WATER DIVERSION	
SILT FENCE	
SUPER SILT FENCE	
DECANT	
SRP CATCHMENT AREA	
ROCK FILTERS	
CULVERT	
FUTURE SW DEVICE	
CYCLEWAY	

NOTES:

Original Scale (A3)		1:2000	
1	AEE LODGEMENT	GJR	15.03.12
Revision:	Amendment:	Approved:	Date:



**Project:** MACKAYS TO PEKA PEKA EXPRESSWAY

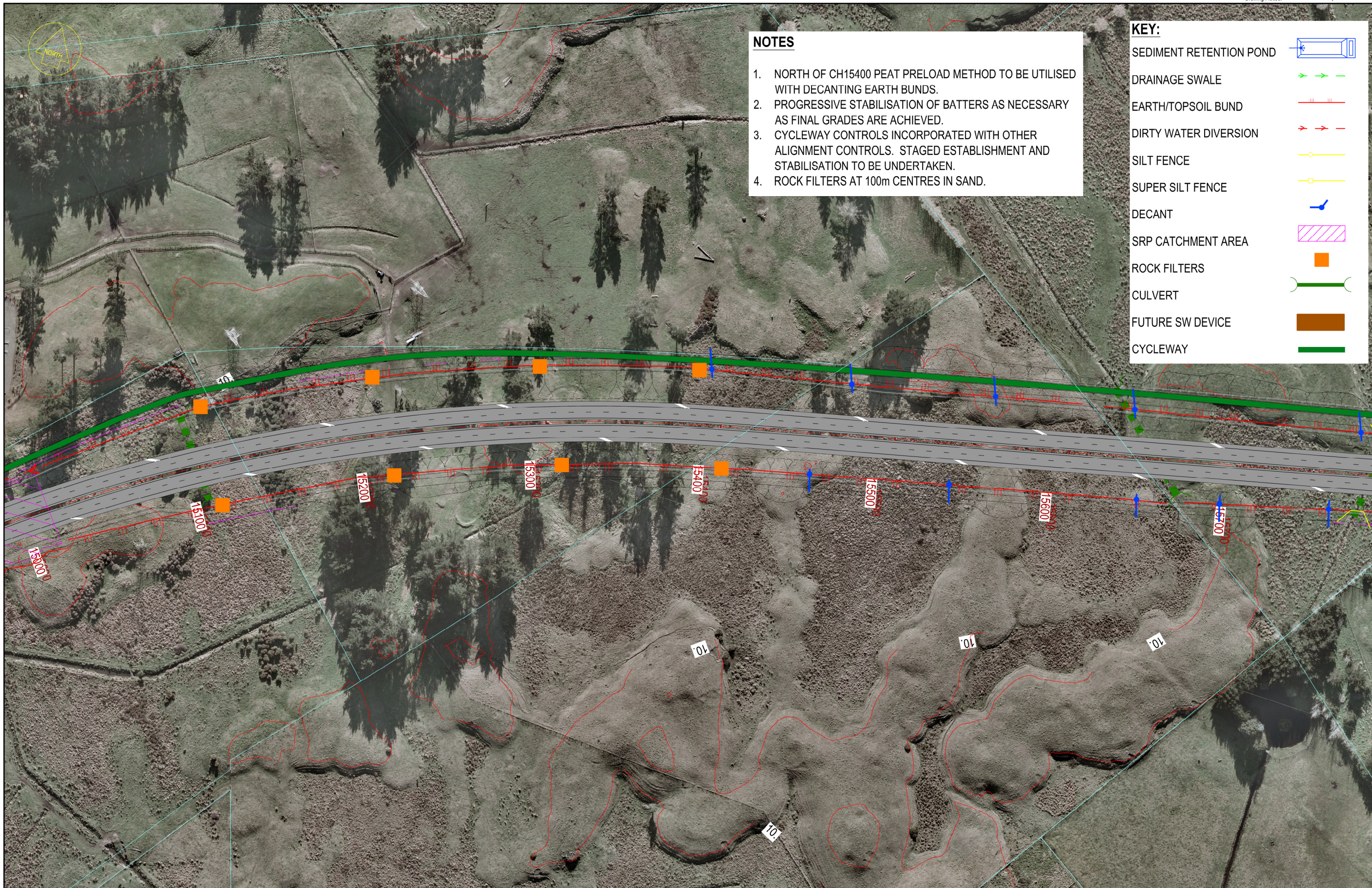
**Title:** EROSION & SEDIMENT CONTROL CHAINAGES 14400 TO 15100

Status: -

Document ID: M2PP-AEE-DWG

Drawing No: CV-CM-223

Rev: 1



**NOTES**

1. NORTH OF CH15400 PEAT PRELOAD METHOD TO BE UTILISED WITH DECANTING EARTH BUNDS.
2. PROGRESSIVE STABILISATION OF BATTERS AS NECESSARY AS FINAL GRADES ARE ACHIEVED.
3. CYCLEWAY CONTROLS INCORPORATED WITH OTHER ALIGNMENT CONTROLS. STAGED ESTABLISHMENT AND STABILISATION TO BE UNDERTAKEN.
4. ROCK FILTERS AT 100m CENTRES IN SAND.

**KEY:**

SEDIMENT RETENTION POND	
DRAINAGE SWALE	
EARTH/TOPSOIL BUND	
DIRTY WATER DIVERSION	
SILT FENCE	
SUPER SILT FENCE	
DECANT	
SRP CATCHMENT AREA	
ROCK FILTERS	
CULVERT	
FUTURE SW DEVICE	
CYCLEWAY	

NOTES:

Original Scale (A3)		1:2000	
1	AEE LODGEMENT	GJR	15.03.12
Revision:	Amendment:	Approved:	Date:



Project: <b>MACKAYS TO PEKA PEKA EXPRESSWAY</b>	
Title: <b>EROSION &amp; SEDIMENT CONTROL CHAINAGES 15000 TO 15750</b>	
Status: -	Rev. 1
Document ID: M2PP-AEE-DWG	Drawing No: <b>CV-CM-224</b>