



LONG TERM STORMWATER WETLAND TO BE UTILISED AS SRP #10  
 AREA = 2.72 Ha  
 VOLUME = 544 m³  
 DIMENSIONS 44.5 m BY 16.5 m

LONG TERM STORMWATER WETLAND TO BE UTILISED DURING CONSTRUCTION AS NECESSARY

**KEY:**

SEDIMENT RETENTION POND	
DRAINAGE SWALE	
EARTH/TOPSOIL BUND	
DIRTY WATER DIVERSION	
SILT FENCE	
SUPER SILT FENCE	
DECANT	
SRP CATCHMENT AREA	
ROCK FILTERS	
CULVERT	
FUTURE SW DEVICE	
CYCLEWAY	

**NOTES**

- DIRTY WATER DIVERSIONS TO SRP#10 TO BE TEMPORARILY PIPED FROM WEST TO EAST UNDER ALIGNMENT TO GET FLOW TO SRP#10.
- WHILE LARGELY PEAT REPLACEMENT DIVERT ALL FLOWS TO SRP#10 AND SRP#11. PEAT REPLACEMENT AND SAND METHODOLOGY TO STILL BE FOLLOWED.
- CYCLEWAY CONTROLS INCORPORATED WITH OTHER ALIGNMENT CONTROLS. STAGED ESTABLISHMENT AND STABILISATION TO BE UNDERTAKEN.

**NOTES:**

- PRE LOAD AND CULVERT EXTENSION METHODOLOGY TO BE FOLLOWED.
- SRP #2 TO ALSO TAKE PUMPING RUNOFF FROM STREAM RELOCATION.

Original Scale (A3)  
 1:2000

Revision	Amendment	Approved	Date
1	AEE LODGEMENT	GJR	15.03.12

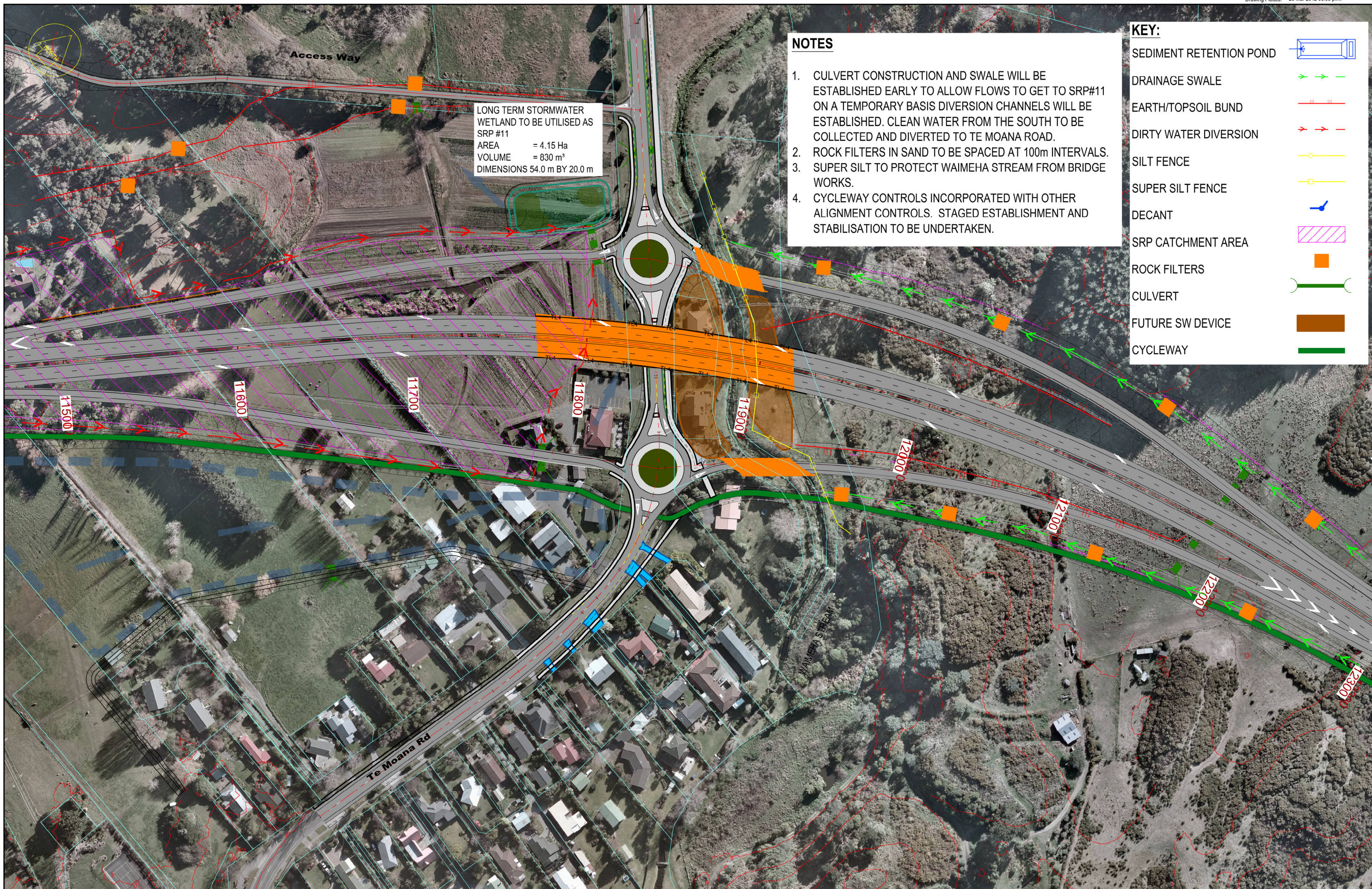


**MACKAYS TO PEKA PEKA EXPRESSWAY**

EROSION & SEDIMENT CONTROL CHAINAGES 10700 TO 11500

Status:	-
Document ID:	M2PP-AEE-DWG
Drawing No:	CV-CM-216
Rev:	1





- NOTES**
1. CULVERT CONSTRUCTION AND SWALE WILL BE ESTABLISHED EARLY TO ALLOW FLOWS TO GET TO SRP#11 ON A TEMPORARY BASIS DIVERSION CHANNELS WILL BE ESTABLISHED. CLEAN WATER FROM THE SOUTH TO BE COLLECTED AND DIVERTED TO TE MOANA ROAD.
  2. ROCK FILTERS IN SAND TO BE SPACED AT 100m INTERVALS.
  3. SUPER SILT TO PROTECT WAIMEHA STREAM FROM BRIDGE WORKS.
  4. CYCLEWAY CONTROLS INCORPORATED WITH OTHER ALIGNMENT CONTROLS. STAGED ESTABLISHMENT AND STABILISATION TO BE UNDERTAKEN.

**KEY:**

- SEDIMENT RETENTION POND
- DRAINAGE SWALE
- EARTH/TOPSOIL BUND
- DIRTY WATER DIVERSION
- SILT FENCE
- SUPER SILT FENCE
- DECANT
- SRP CATCHMENT AREA
- ROCK FILTERS
- CULVERT
- FUTURE SW DEVICE
- CYCLEWAY

LONG TERM STORMWATER WETLAND TO BE UTILISED AS SRP #11  
 AREA = 4.15 Ha  
 VOLUME = 830 m³  
 DIMENSIONS 54.0 m BY 20.0 m

NOTES:

Original Scale (A3)	1:2000
---------------------	--------

1	AEE LODGEMENT	GJR	15.03.12
Revision:	Amendment:	Approved:	Date:



**MACKAYS TO PEKA PEKA EXPRESSWAY**

EROSION & SEDIMENT CONTROL CHAINAGES 11500 TO 12300

CV-CM-217 1





**KEY:**

SEDIMENT RETENTION POND	
DRAINAGE SWALE	
EARTH/TOPSOIL BUND	
DIRTY WATER DIVERSION	
SILT FENCE	
SUPER SILT FENCE	
DECANT	
SRP CATCHMENT AREA	
ROCK FILTERS	
CULVERT	
FUTURE SW DEVICE	
CYCLEWAY	

LONG TERM STORMWATER WETLAND TO BE UTILISED AS SRP #11  
 AREA = 4.15 Ha  
 VOLUME = 830 m<sup>3</sup>  
 DIMENSIONS 54.0 m BY 20.0 m

**NOTES**

1. CULVERT CONSTRUCTION AND SWALE WILL BE ESTABLISHED EARLY TO ALLOW FLOWS TO GET TO SRP#11 ON A TEMPORARY BASIS DIVERSION CHANNELS WILL BE ESTABLISHED. CLEAN WATER FROM THE SOUTH TO BE COLLECTED AND DIVERTED TO TE MOANA ROAD.
2. ROCK FILTERS IN SAND TO BE SPACED AT 100m INTERVALS.
3. SUPER SILT TO PROTECT WAIMEHA STREAM FROM BRIDGE WORKS.
4. CYCLEWAY CONTROLS INCORPORATED WITH OTHER ALIGNMENT CONTROLS. STAGED ESTABLISHMENT AND STABILISATION TO BE UNDERTAKEN.

NOTES:

Original Scale (A3)  
 1:2000

1	AEE LODGEMENT	GJR	15.03.12
Revision:	Amendment:	Approved:	Date:



**MACKAYS TO PEKA PEKA EXPRESSWAY**

EROSION & SEDIMENT CONTROL  
 TE MOANA ROAD INTERSECTION

Status:	-
Document ID:	M2PP-AEE-DWG
Drawing No:	CV-CM-218
Rev:	1