



NOTES

1. PEAT REPLACEMENT AND SAND WORKS AS PER METHODOLOGY IN EROSION & SEDIMENT CONTROL PLAN.
2. TOPSOIL BUNDS TO BE ESTABLISHED ON FILL BATTERS TO CONTAIN ANY RUNOFF.
3. DUST MANAGEMENT TECHNIQUES TO BE CAREFULLY IMPLEMENTED WITHIN CH6400 TO 7900.
4. PROGRESSIVE STABILISATION OF BATTERS TO OCCUR AS FINAL BATTER SLOPES ARE FORMED.
5. CYCLEWAY CONTROLS INCORPORATED WITH OTHER ALIGNMENT CONTROLS. STAGED ESTABLISHMENT AND STABILISATION TO BE UNDERTAKEN.
6. ROCK FILTERS AT 100m CENTRES IN SAND.

KEY:

- SEDIMENT RETENTION POND
- DRAINAGE SWALE
- EARTH/TOPSOIL BUND
- DIRTY WATER DIVERSION
- SILT FENCE
- SUPER SILT FENCE
- DECANT
- SRP CATCHMENT AREA
- ROCK FILTERS
- CULVERT
- FUTURE SW DEVICE
- CYCLEWAY

NOTES:

| | | | |
|---------------------|---------------|----------|----------|
| Original Scale (A3) | | | |
| 1:2000 | | | |
| 1 | AEE LODGEMENT | GJR | 15.03.12 |
| Revision | Amendment | Approved | Date |



| | |
|---|------------------------------|
| Project: MACKAYS TO PEKA PEKA EXPRESSWAY | |
| Title: EROSION & SEDIMENT CONTROL CHAINAGES 6700 TO 7400 | |
| Status: - | Rev. 1 |
| Document ID: M2PP-AEE-DWG | Drawing No: CV-CM-210 |

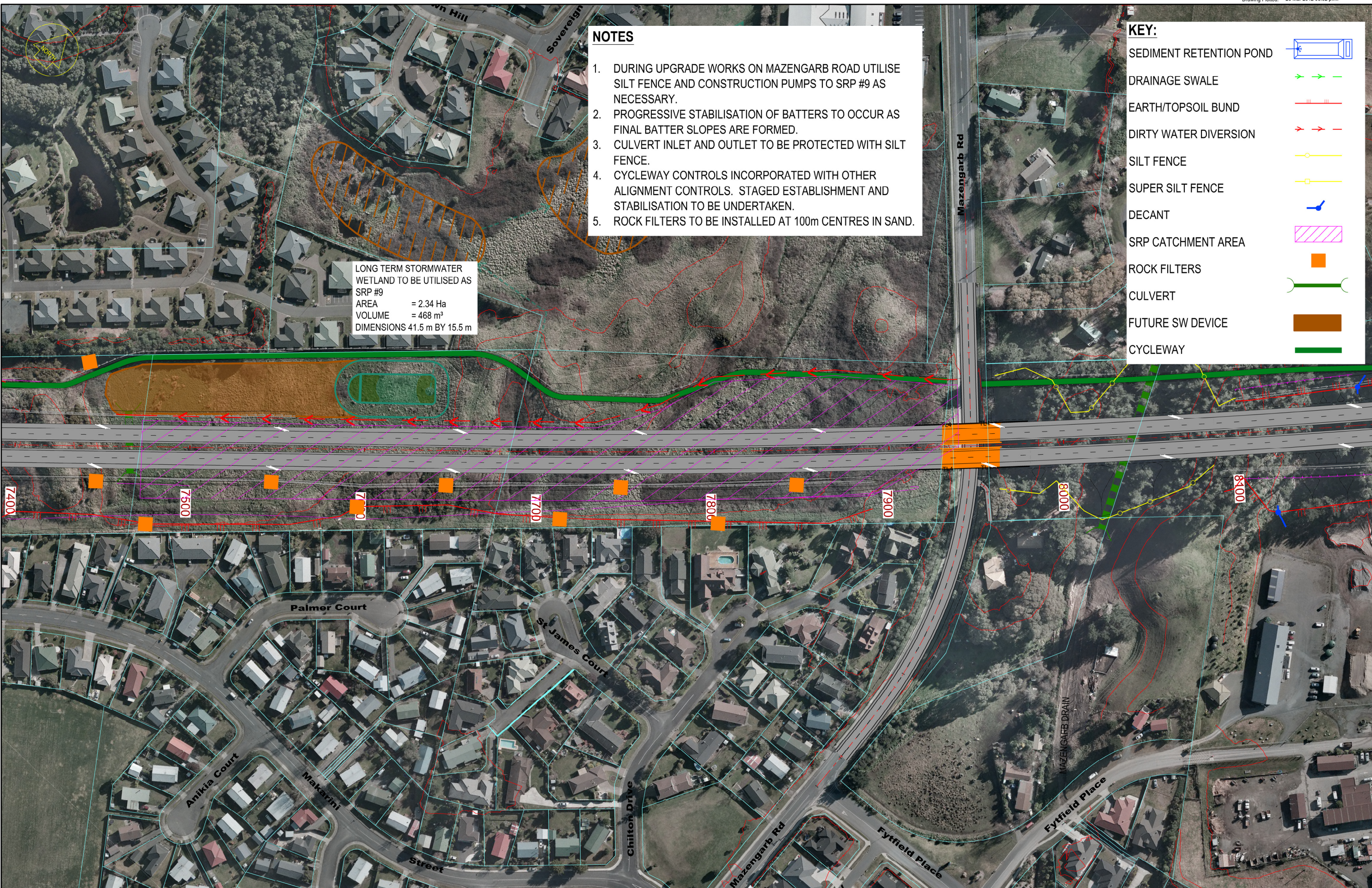
NOTES

1. DURING UPGRADE WORKS ON MAZENGARB ROAD UTILISE SILT FENCE AND CONSTRUCTION PUMPS TO SRP #9 AS NECESSARY.
2. PROGRESSIVE STABILISATION OF BATTERS TO OCCUR AS FINAL BATTER SLOPES ARE FORMED.
3. CULVERT INLET AND OUTLET TO BE PROTECTED WITH SILT FENCE.
4. CYCLEWAY CONTROLS INCORPORATED WITH OTHER ALIGNMENT CONTROLS. STAGED ESTABLISHMENT AND STABILISATION TO BE UNDERTAKEN.
5. ROCK FILTERS TO BE INSTALLED AT 100m CENTRES IN SAND.

LONG TERM STORMWATER WETLAND TO BE UTILISED AS SRP #9
 AREA = 2.34 Ha
 VOLUME = 468 m³
 DIMENSIONS 41.5 m BY 15.5 m

KEY:

- SEDIMENT RETENTION POND
- DRAINAGE SWALE
- EARTH/TOPSOIL BUND
- DIRTY WATER DIVERSION
- SILT FENCE
- SUPER SILT FENCE
- DECANT
- SRP CATCHMENT AREA
- ROCK FILTERS
- CULVERT
- FUTURE SW DEVICE
- CYCLEWAY



NOTES:

Original Scale (A3)
 1:2000

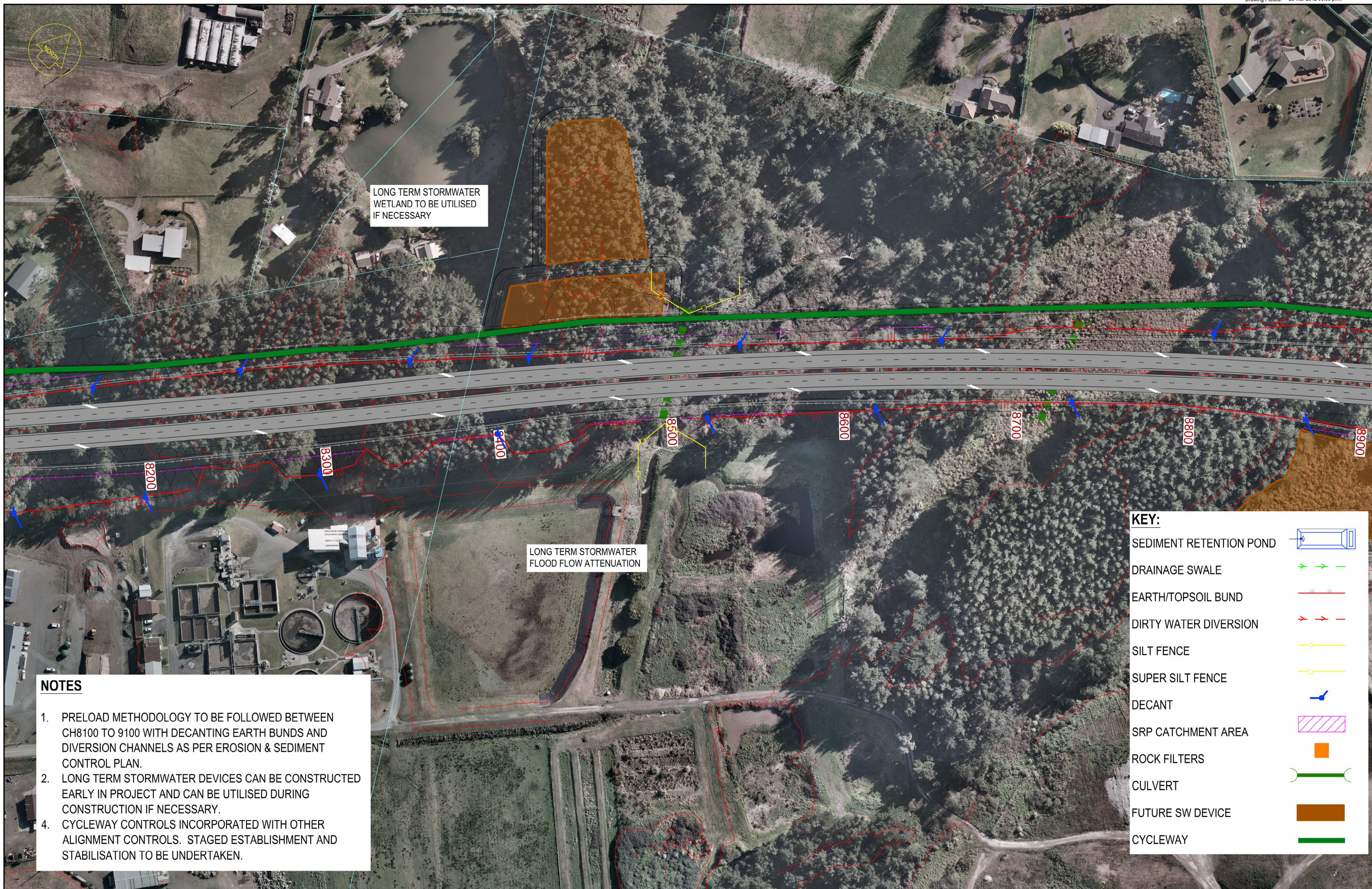
| | | | |
|-----------|---------------|-----------|----------|
| 1 | AEI LODGEMENT | GJR | 15.03.12 |
| Revision: | Amendment: | Approved: | Date: |



MACKAYS TO PEKA PEKA EXPRESSWAY

EROSION & SEDIMENT CONTROL
 CHAINAGES 7400 TO 8150

| | |
|--------------|--------------|
| Status: | - |
| Document ID: | M2PP-AEE-DWG |
| Drawing No: | CV-CM-211 |
| Rev: | 1 |



NOTES

1. PRELOAD METHODOLOGY TO BE FOLLOWED BETWEEN CH8100 TO 9100 WITH DECANTING EARTH BUNDS AND DIVERSION CHANNELS AS PER EROSION & SEDIMENT CONTROL PLAN.
2. LONG TERM STORMWATER DEVICES CAN BE CONSTRUCTED EARLY IN PROJECT AND CAN BE UTILISED DURING CONSTRUCTION IF NECESSARY.
4. CYCLEWAY CONTROLS INCORPORATED WITH OTHER ALIGNMENT CONTROLS. STAGED ESTABLISHMENT AND STABILISATION TO BE UNDERTAKEN.

KEY:

- SEDIMENT RETENTION POND
- DRAINAGE SWALE
- EARTH/TOPSOIL BUND
- DIRTY WATER DIVERSION
- SILT FENCE
- SUPER SILT FENCE
- DECANT
- SRP CATCHMENT AREA
- ROCK FILTERS
- CULVERT
- FUTURE SW DEVICE
- CYCLEWAY

NOTES:

Original Scale (A3)
1:2000

| | | | |
|-----------|---------------|-----------|----------|
| 1 | AEE LODGEMENT | GJR | 15.03.12 |
| Revision: | Amendment: | Approved: | Date: |



MACKAYS TO PEKA PEKA EXPRESSWAY

EROSION & SEDIMENT CONTROL
CHAINAGES 8100 TO 8850

| | |
|--------------|--------------|
| Status: | - |
| Document ID: | M2PP-AEE-DWG |
| Drawing No: | CV-CM-212 |
| Rev: | 1 |