

KEY:

- CATCHMENT #1 WHAREROA AREAS
- CATCHMENT #2 WHAREMAUKU AREAS
- CATCHMENT #3 WAIKANAE AREAS
- CATCHMENT #4 NGARARA AREAS
- SLOPE AREA - 0 TO 5%
- SLOPE AREA - 5 TO 10%
- SLOPE AREA - 10 TO 20%
- SLOPE AREA - OVER 20%

NOTES:

Original Scale (A3)
1:5000

1	AEE LODGEMENT	GJR	15.03.12
Revision:	Amendment:	Approved:	Date:



Project: **MACKAYS TO PEKA PEKA EXPRESSWAY**

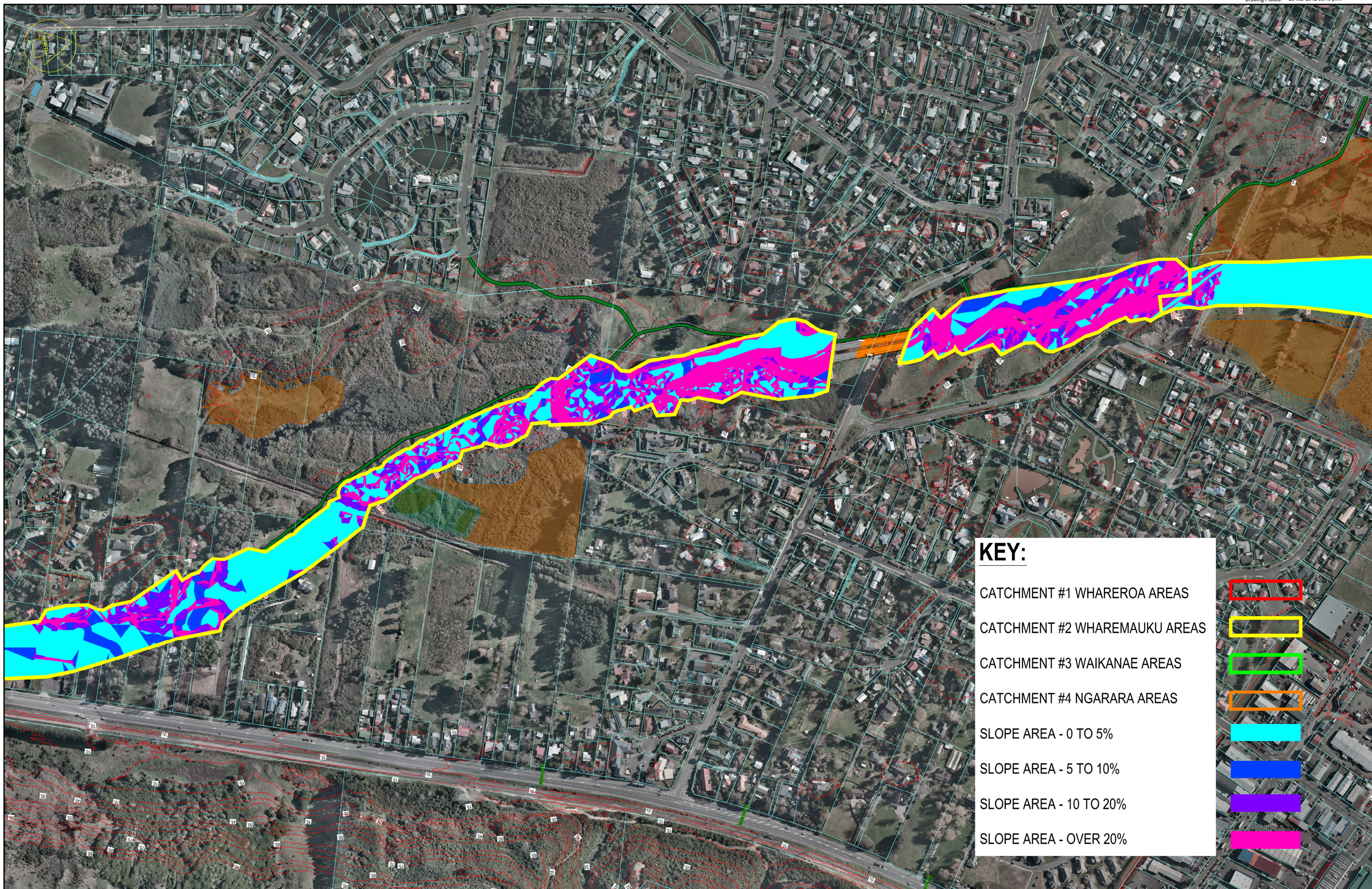
Title: **EROSION & SEDIMENT CONTROL CHAINAGES 1600 TO 3500 USLE SLOPES**

Status: -

Document ID: M2PP-AEE-DWG

Drawing No: **CV-CM-273**

Rev: 1



KEY:

- CATCHMENT #1 WHAREROA AREAS
- CATCHMENT #2 WHAREMAUKU AREAS
- CATCHMENT #3 WAIKANAЕ AREAS
- CATCHMENT #4 NGARARA AREAS
- SLOPE AREA - 0 TO 5%
- SLOPE AREA - 5 TO 10%
- SLOPE AREA - 10 TO 20%
- SLOPE AREA - OVER 20%

NOTES:

Original Scale (A3)			
1:5000			
1	AEE LODGEMENT	GJR	15.03.12
Revision:	Amendment:	Approved:	Date:



MACKAYS TO PEKA PEKA EXPRESSWAY		Status:	-
EROSION & SEDIMENT CONTROL CHAINAGES 3200 TO 5200 USLE SLOPES		Document ID:	M2PP-AEE-DWG
		Drawing No:	CV-CM-274
		Rev:	1