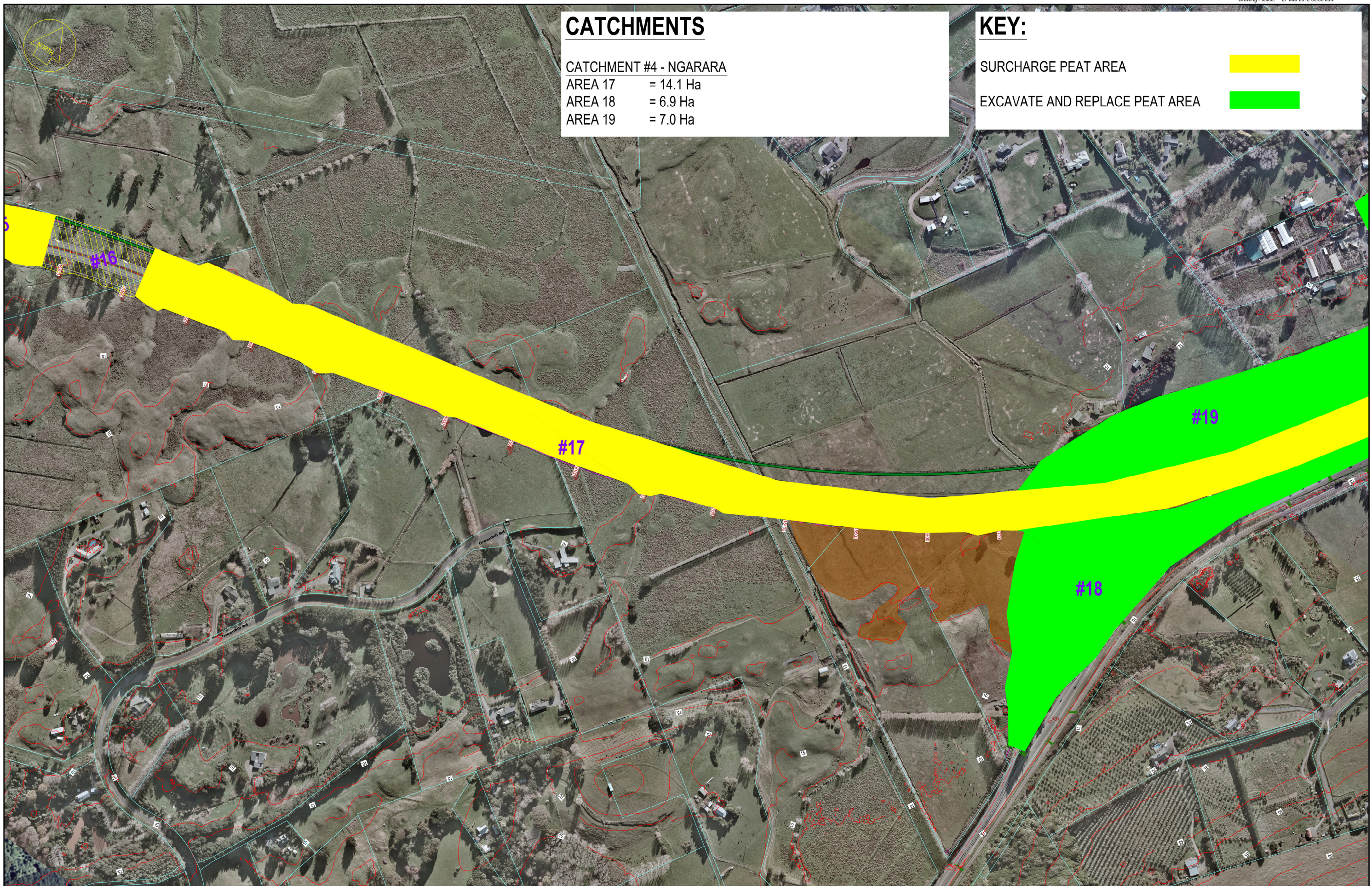


CATCHMENTS

CATCHMENT #4 - NGARARA
 AREA 17 = 14.1 Ha
 AREA 18 = 6.9 Ha
 AREA 19 = 7.0 Ha

KEY:

- SURCHARGE PEAT AREA
- EXCAVATE AND REPLACE PEAT AREA



NOTES:

Original Scale (A3)
 1:5000

1	AEE LODGEMENT	GJR	15.03.12
Revision:	Amendment:	Approved:	Date:



Project: **MACKAYS TO PEKA PEKA EXPRESSWAY**

Title: **EROSION & SEDIMENT CONTROL CHAINAGES 15300 TO 17200 USLE CATCHMENTS**

Status: -

Document ID: M2PP-AEE-DWG Rev: -

Drawing No: **CV-CM-269** 1

CATCHMENTS

CATCHMENT #4 - NGARARA

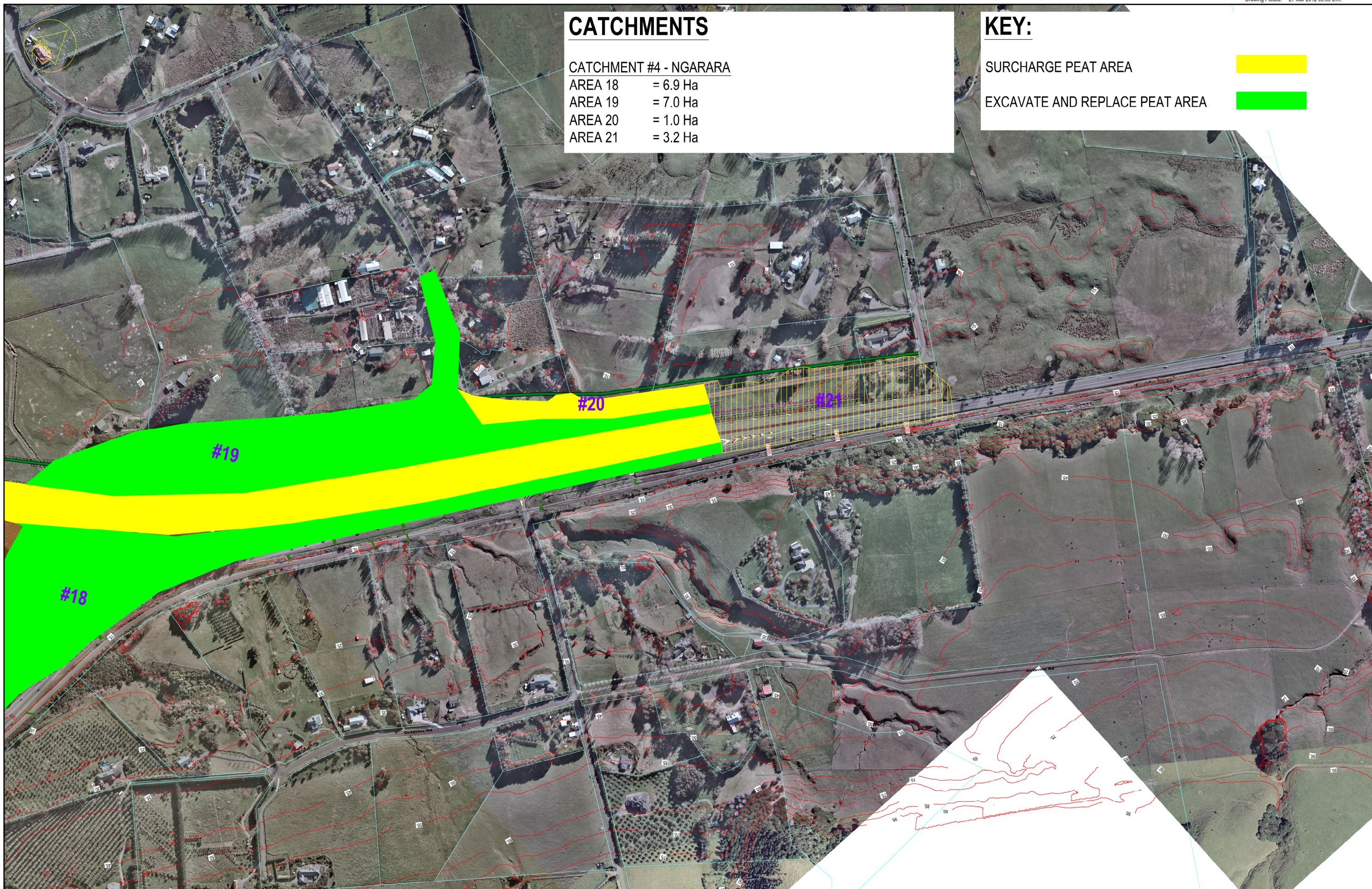
- AREA 18 = 6.9 Ha
- AREA 19 = 7.0 Ha
- AREA 20 = 1.0 Ha
- AREA 21 = 3.2 Ha

KEY:

SURCHARGE PEAT AREA



EXCAVATE AND REPLACE PEAT AREA



NOTES:

Original Scale (A3)
1:5000

1	AEE LODGEMENT	GJR	15.03.12
Revision:	Amendment:	Approved:	Date:



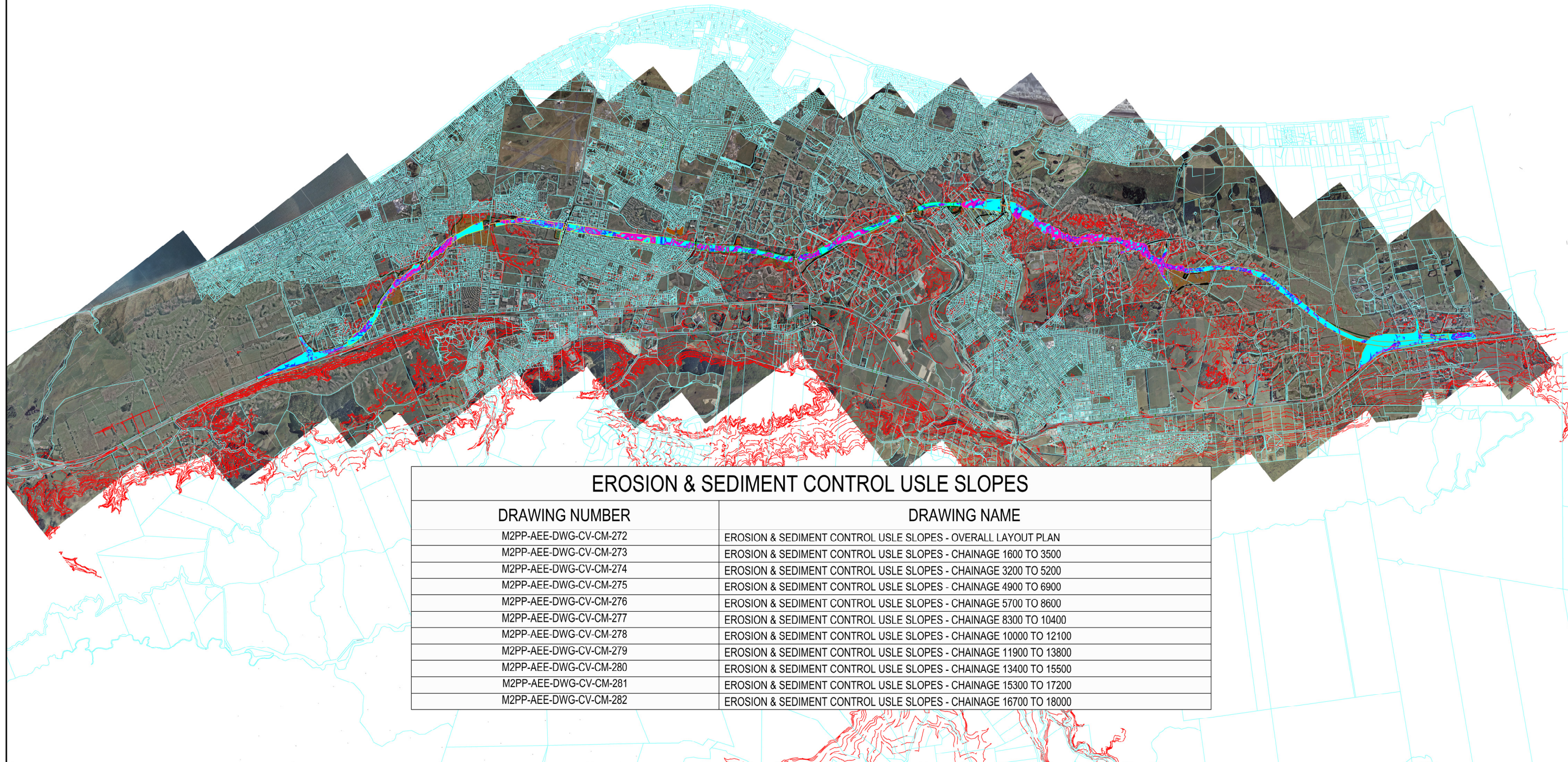
Project: **MACKAYS TO PEKA PEKA EXPRESSWAY**

Title: **EROSION & SEDIMENT CONTROL CHAINAGES 16700 TO 18000 USLE CATCHMENTS**

Status: -

Document ID: M2PP-AEE-DWG Rev. 1

Drawing No: **CV-CM-270**



EROSION & SEDIMENT CONTROL USLE SLOPES

DRAWING NUMBER	DRAWING NAME
M2PP-AEE-DWG-CV-CM-272	EROSION & SEDIMENT CONTROL USLE SLOPES - OVERALL LAYOUT PLAN
M2PP-AEE-DWG-CV-CM-273	EROSION & SEDIMENT CONTROL USLE SLOPES - CHAINAGE 1600 TO 3500
M2PP-AEE-DWG-CV-CM-274	EROSION & SEDIMENT CONTROL USLE SLOPES - CHAINAGE 3200 TO 5200
M2PP-AEE-DWG-CV-CM-275	EROSION & SEDIMENT CONTROL USLE SLOPES - CHAINAGE 4900 TO 6900
M2PP-AEE-DWG-CV-CM-276	EROSION & SEDIMENT CONTROL USLE SLOPES - CHAINAGE 5700 TO 8600
M2PP-AEE-DWG-CV-CM-277	EROSION & SEDIMENT CONTROL USLE SLOPES - CHAINAGE 8300 TO 10400
M2PP-AEE-DWG-CV-CM-278	EROSION & SEDIMENT CONTROL USLE SLOPES - CHAINAGE 10000 TO 12100
M2PP-AEE-DWG-CV-CM-279	EROSION & SEDIMENT CONTROL USLE SLOPES - CHAINAGE 11900 TO 13800
M2PP-AEE-DWG-CV-CM-280	EROSION & SEDIMENT CONTROL USLE SLOPES - CHAINAGE 13400 TO 15500
M2PP-AEE-DWG-CV-CM-281	EROSION & SEDIMENT CONTROL USLE SLOPES - CHAINAGE 15300 TO 17200
M2PP-AEE-DWG-CV-CM-282	EROSION & SEDIMENT CONTROL USLE SLOPES - CHAINAGE 16700 TO 18000

NOTES:

Original Scale (A3)
1:50000

Revision	Amendment	Approved	Date
1	AEE LODGEMENT	GJR	15.03.12



Project: **MACKAYS TO PEKA PEKA EXPRESSWAY**

Title: **EROSION & SEDIMENT CONTROL OVERALL LAYOUT PLAN USLE SLOPES**

Status: -

Document ID: M2PP-AEE-DWG

Drawing No: **CV-CM-272**

Rev: 1