

CATCHMENTS

CATCHMENT #2 - WHAREMAUKU

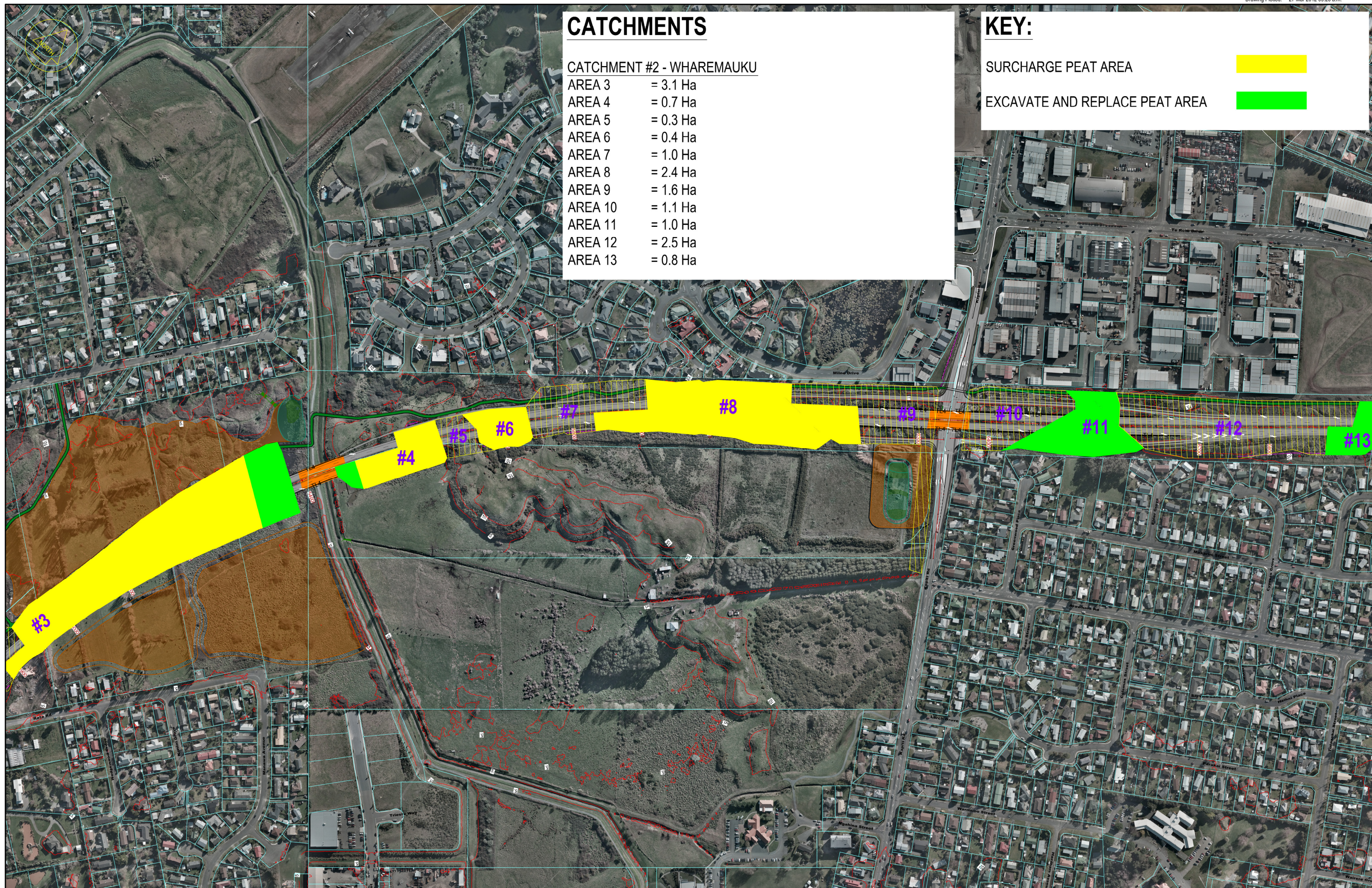
- AREA 3 = 3.1 Ha
- AREA 4 = 0.7 Ha
- AREA 5 = 0.3 Ha
- AREA 6 = 0.4 Ha
- AREA 7 = 1.0 Ha
- AREA 8 = 2.4 Ha
- AREA 9 = 1.6 Ha
- AREA 10 = 1.1 Ha
- AREA 11 = 1.0 Ha
- AREA 12 = 2.5 Ha
- AREA 13 = 0.8 Ha

KEY:

SURCHARGE PEAT AREA



EXCAVATE AND REPLACE PEAT AREA



NOTES:

Original Scale (A3)
1:5000

1	AEI LODGEMENT	GJR	15.03.12
Revision	Amendment	Approved	Date



MACKAYS TO PEKA PEKA EXPRESSWAY

EROSION & SEDIMENT CONTROL
CHAINAGES 4900 TO 6900
USLE CATCHMENTS

Status:	-
Document ID:	M2PP-AEE-DWG
Drawing No:	CV-CM-263
Rev:	1

CATCHMENTS

CATCHMENT #2 - WHAREMAUKU

- AREA 12 = 2.5 Ha
- AREA 13 = 0.8 Ha
- AREA 14 = 3.5 Ha
- AREA 15 = 0.5 Ha

CATCHMENT #3 - WAIKANAE

- AREA 1 = 3.6 Ha
- AREA 2 = 0.9 Ha
- AREA 3 = 0.6 Ha
- AREA 4 = 0.1 Ha
- AREA 5 = 0.9 Ha
- AREA 6 = 0.8 Ha
- AREA 7 = 0.3 Ha
- AREA 8 = 2.9 Ha

KEY:

SURCHARGE PEAT AREA



EXCAVATE AND REPLACE PEAT AREA



NOTES:

Original Scale (A3)
1:5000

1	AEE LODGEMENT	GJR	15.03.12
Revision:	Amendment:	Approved:	Date:



MACKAYS TO PEKA PEKA EXPRESSWAY

Project: EROSION & SEDIMENT CONTROL
CHAINAGES 6700 TO 8600
USLE CATCHMENTS

Status:	-
Document ID:	M2PP-AEE-DWG
Drawing No:	CV-CM-264
Rev:	1

CATCHMENTS

CATCHMENT #3 - WAIKANAE

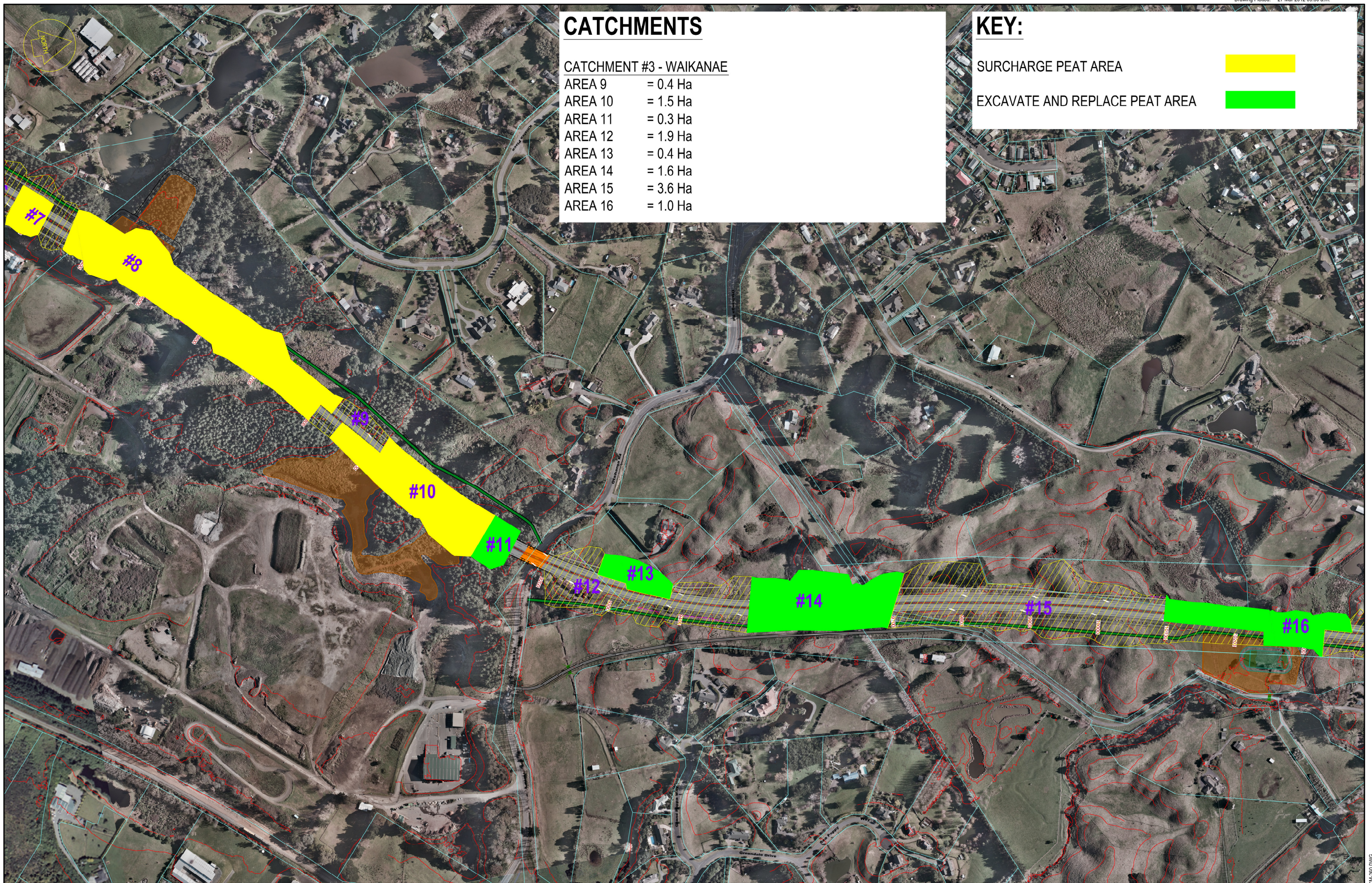
- AREA 9 = 0.4 Ha
- AREA 10 = 1.5 Ha
- AREA 11 = 0.3 Ha
- AREA 12 = 1.9 Ha
- AREA 13 = 0.4 Ha
- AREA 14 = 1.6 Ha
- AREA 15 = 3.6 Ha
- AREA 16 = 1.0 Ha

KEY:

SURCHARGE PEAT AREA



EXCAVATE AND REPLACE PEAT AREA



NOTES:

1	AEE LODGEMENT	GJR	15.03.12
Revision:	Amendment:	Approved:	Date:

Original Scale (A3)
1:5000



Project: MACKAYS TO PEKA PEKA EXPRESSWAY	
Title: EROSION & SEDIMENT CONTROL CHAINAGES 8300 TO 10400 USLE CATCHMENTS	
Status: -	Rev. 1
Document ID: M2PP-AEE-DWG	Drawing No: CV-CM-265