

### EROSION & SEDIMENT CONTROL USLE CATCHMENTS

DRAWING NUMBER	DRAWING NAME
M2PP-AEE-DWG-CV-CM-260	EROSION & SEDIMENT CONTROL USLE CATCHMENTS - OVERALL LAYOUT PLAN
M2PP-AEE-DWG-CV-CM-261	EROSION & SEDIMENT CONTROL USLE CATCHMENTS - CHAINAGE 1600 TO 3500
M2PP-AEE-DWG-CV-CM-262	EROSION & SEDIMENT CONTROL USLE CATCHMENTS - CHAINAGE 3200 TO 5200
M2PP-AEE-DWG-CV-CM-263	EROSION & SEDIMENT CONTROL USLE CATCHMENTS - CHAINAGE 4900 TO 6900
M2PP-AEE-DWG-CV-CM-264	EROSION & SEDIMENT CONTROL USLE CATCHMENTS - CHAINAGE 5700 TO 8600
M2PP-AEE-DWG-CV-CM-265	EROSION & SEDIMENT CONTROL USLE CATCHMENTS - CHAINAGE 8300 TO 10400
M2PP-AEE-DWG-CV-CM-266	EROSION & SEDIMENT CONTROL USLE CATCHMENTS - CHAINAGE 10000 TO 12100
M2PP-AEE-DWG-CV-CM-267	EROSION & SEDIMENT CONTROL USLE CATCHMENTS - CHAINAGE 11900 TO 13800
M2PP-AEE-DWG-CV-CM-268	EROSION & SEDIMENT CONTROL USLE CATCHMENTS - CHAINAGE 13400 TO 15500
M2PP-AEE-DWG-CV-CM-269	EROSION & SEDIMENT CONTROL USLE CATCHMENTS - CHAINAGE 15300 TO 17200
M2PP-AEE-DWG-CV-CM-270	EROSION & SEDIMENT CONTROL USLE CATCHMENTS - CHAINAGE 16700 TO 18000

NOTES:

Original Scale (A3)  
1:50000

Revision	Amendment	Approved	Date
1	AEE LODGEMENT	GJR	15.03.12



Project: **MACKAYS TO PEKA PEKA EXPRESSWAY**

Title: **EROSION & SEDIMENT CONTROL OVERALL LAYOUT PLAN USLE CATCHMENTS**

Status: -  
Document ID: M2PP-AEE-DWG  
Drawing No: **CV-CM-260**  
Rev: 1

# CATCHMENTS

## CATCHMENT #1 - WHAREROA

AREA 1 = 9.0 Ha

AREA 2 = 0.7 Ha

## CATCHMENT #2 - WHAREMAUKU

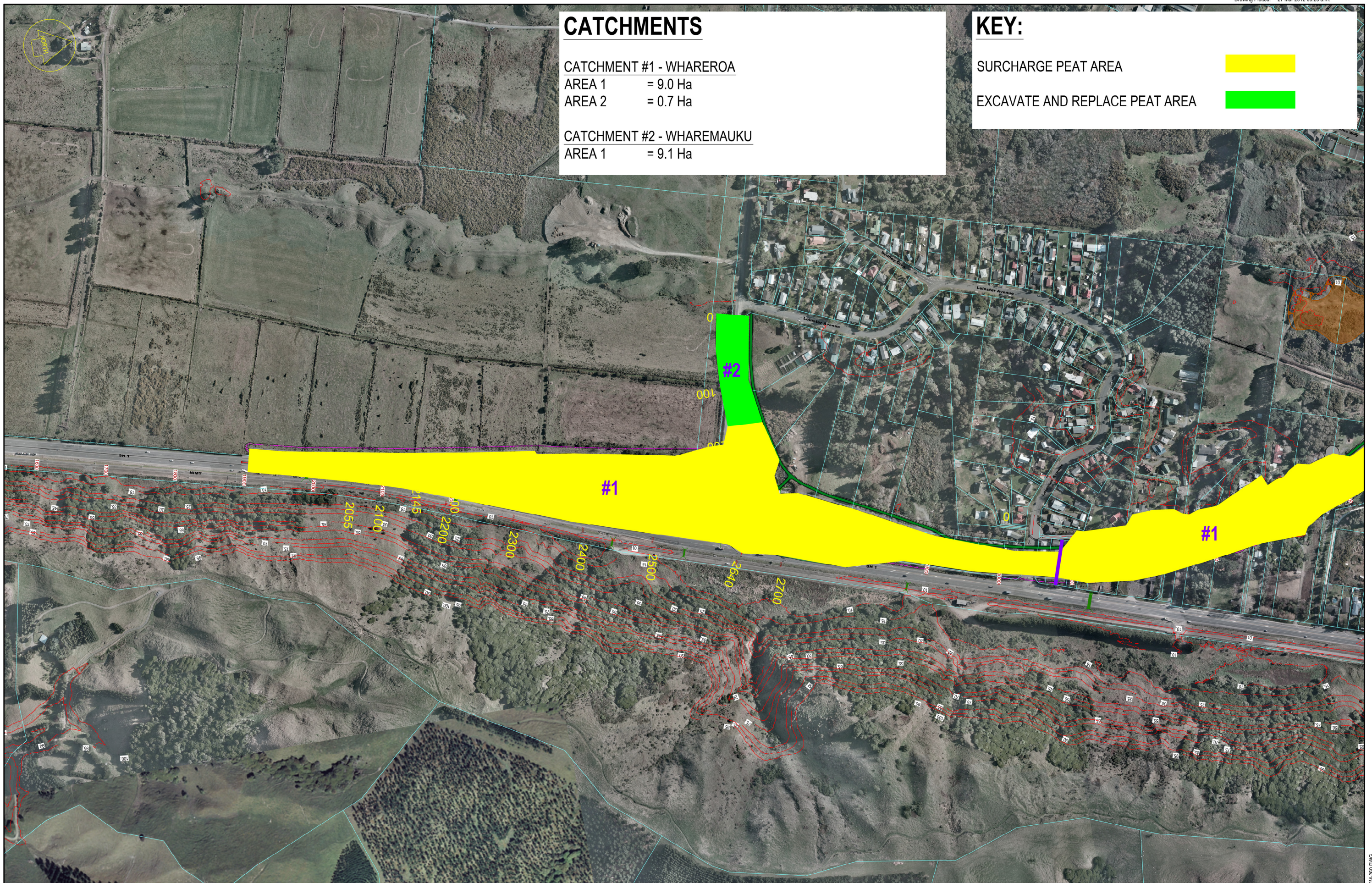
AREA 1 = 9.1 Ha

# KEY:

SURCHARGE PEAT AREA



EXCAVATE AND REPLACE PEAT AREA



NOTES:

Original Scale (A3)  
1:5000

1	AEE LODGEMENT	GJR	15.03.12
Revision:	Amendment:	Approved:	Date:



## MACKAYS TO PEKA PEKA EXPRESSWAY

EROSION & SEDIMENT CONTROL  
CHAINAGES 2700 TO 3500  
USLE CATCHMENTS

Status:	-
Document ID:	M2PP-AEE-DWG
Rev:	1
Drawing No:	CV-CM-261

# CATCHMENTS

## CATCHMENT #1 - WHAREROA

AREA 1 = 15.1 Ha

## CATCHMENT #2 - WHAREMAUKU

AREA 1 = 9.1 Ha

AREA 2 = 3.0 Ha

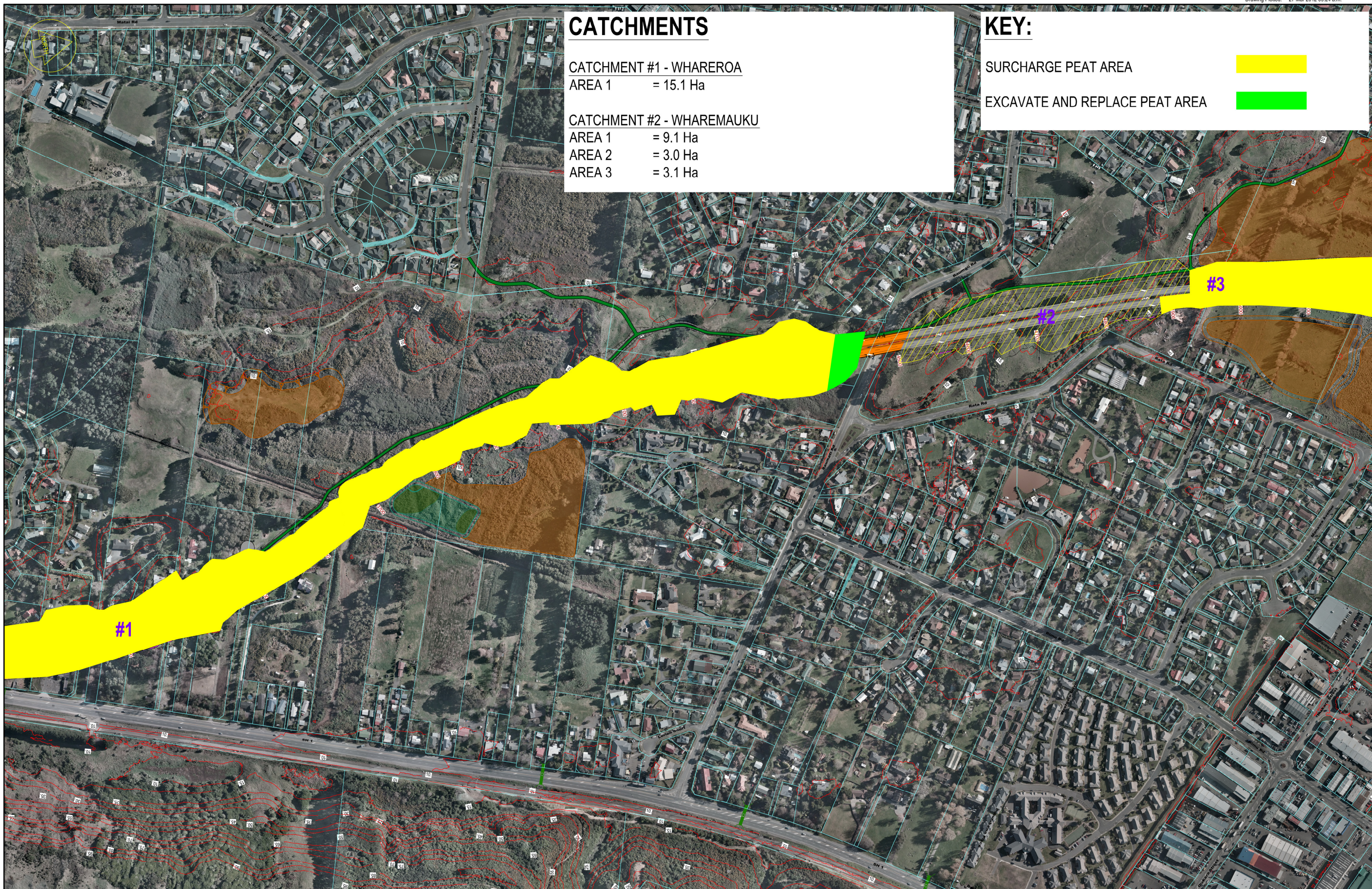
AREA 3 = 3.1 Ha

# KEY:

SURCHARGE PEAT AREA



EXCAVATE AND REPLACE PEAT AREA



NOTES:

Original Scale (A3)  
1:5000

1	AEE LODGEMENT	GJR	15.03.12
Revision:	Amendment:	Approved:	Date:



Project: **MACKAYS TO PEKA PEKA EXPRESSWAY**

Title: **EROSION & SEDIMENT CONTROL CHAINAGES 3200 TO 5200 USLE CATCHMENTS**

Status: -

Document ID: M2PP-AEE-DWG

Drawing No: **CV-CM-262**

Rev: 1