

**Legend**

- Silt Ponds
- Construction Designation
- Proposed Alignment

**Significant Vegetation**

- Indigenous vegetation within the Construction Designation to be retained
- Indigenous vegetation within the Proposed Alignment requiring ecological input prior to clearance
- Identified landscape and visual vegetation within the Construction Designation to be retained

Notes:

Original Scale (A3)			
1:50,000			
A	AYF	AH4	27/03/12
Revision	Amendment	Approved	Date



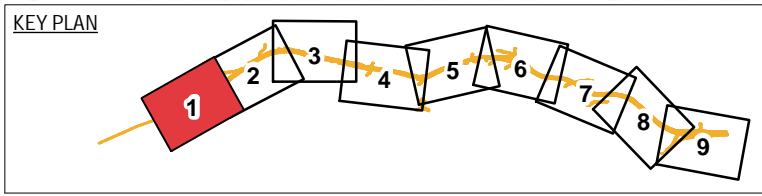
Project: MACKAYS TO PEKA PEKA EXPRESSWAY		Status:	
Title: CEMP Location of Construction Activities relative to Terrestrial Receiving Environments		Document ID:	Rev.
		Drawing No: EN-MP-001	A

Path:P:\318\318-AKL\3320901\TG\155\_Workspaces\01\_mxd\MP2PP-AEE-DWG-GI-GE-001a\_CEMP\_Terrestrial\_Receiving\_Environments\_Overview.mxd



**Legend**  
 Refer to Overview Map

This map contains data derived in part or wholly from sources other than Beca, and therefore, no representations or warranties are made by Beca as to the accuracy or completeness of this information.  
 Map intended for distribution as a PDF document. Scale may be incorrect when printed.  
 Contains Crown Copyright Data. Crown Copyright Reserved.



Original Scale (A3)  
 1:5,000

A	AYF	AH4	27/03/12
Revision	Amendment	Approved	Date



Project:	<b>MACKAYS TO PEKA PEKA EXPRESSWAY</b>		
Title:	CEMP Location of Construction Activities relative to Terrestrial Receiving Environments Page 1 of 9		
Status:			
Document ID:			
Drawing No:	EN-MP-001		
			A

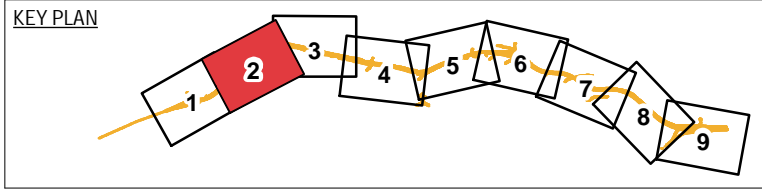
Path:P:\318\318-AKL\3320901\TG\155\_Workspaces\01\_mxdm2pp-AEE-DWG-GI-GE-001\_CEMP\_Terrestrial\_Receiving\_Environments\_Rev2.mxd



**Legend**  
 Refer to Overview Map

This map contains data derived in part or wholly from sources other than Beca, and therefore, no representations or warranties are made by Beca as to the accuracy or completeness of this information.

Map intended for distribution as a PDF document. Scale may be incorrect when printed.  
 Contains Crown Copyright Data. Crown Copyright Reserved.

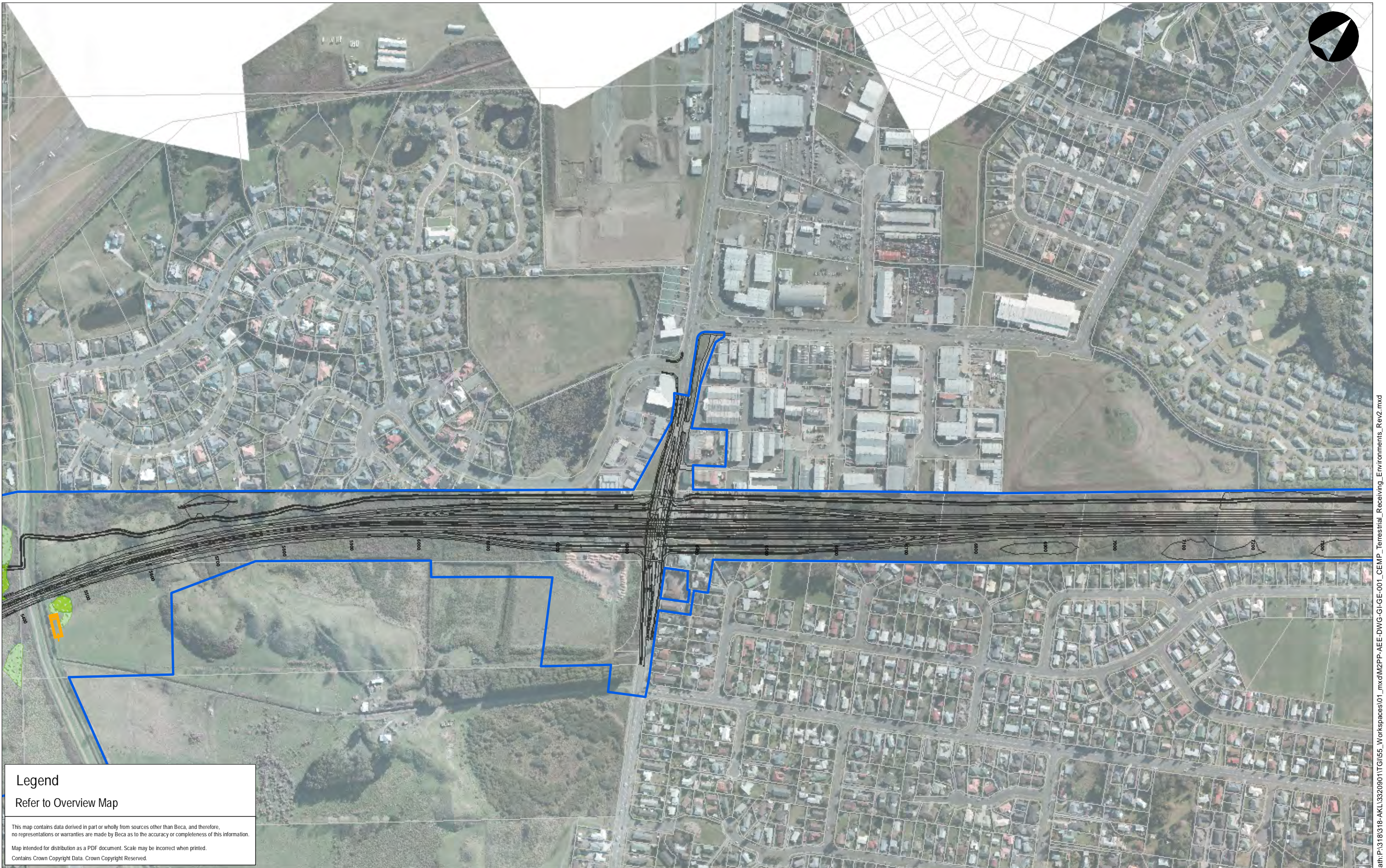


Original Scale (A3)  
 1:5,000

A	AYF	AH4	27/03/12
Revision	Amendment	Approved	Date

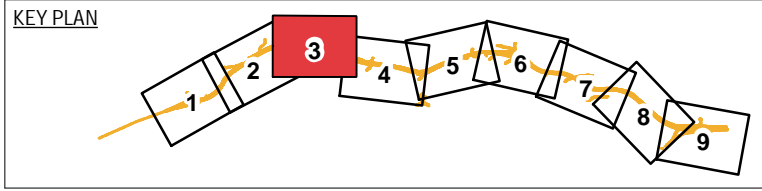


Project:	<b>MACKAYS TO PEKA PEKA EXPRESSWAY</b>		
Title:	CEMP Location of Construction Activities relative to Terrestrial Receiving Environments		Status:
	Page 2 of 9	Document ID:	Rev.
		Drawing No:	A
		EN-MP-001	



**Legend**  
 Refer to Overview Map

This map contains data derived in part or wholly from sources other than Beca, and therefore, no representations or warranties are made by Beca as to the accuracy or completeness of this information.  
 Map intended for distribution as a PDF document. Scale may be incorrect when printed.  
 Contains Crown Copyright Data. Crown Copyright Reserved.



Original Scale (A3)  
 1:5,000

A	AYF	AH4	27/03/12
Revision	Amendment	Approved	Date



Project:	<b>MACKAYS TO PEKA PEKA EXPRESSWAY</b>		
Title:	CEMP Location of Construction Activities relative to Terrestrial Receiving Environments Page 3 of 9		
Status:			
Document ID:			
Drawing No:	EN-MP-001		
			A

Path:P:\318\318-AKL\3320901\TG\155\_Workspaces\01\_mxdm2pp-AEE-DWG-GI-GE-001\_CEMP\_Terrestrial\_Receiving\_Environments\_Rev2.mxd