



- Legend**
- Ecological Restoration Areas**
- Stream Bridge
 - Channel
 - Culvert
 - Wetlands
 - Silt Ponds
 - Major Watercourses
 - Diverted Watercourses
 - Proposed Alignment
 - Contaminated Land
 - Construction Designation

Notes:

Original Scale (A3)
1:50,000

| | | | |
|----------|-----------|----------|----------|
| | | | |
| | | | |
| | | | |
| A | AYF | AH4 | 27/03/12 |
| Revision | Amendment | Approved | Date |



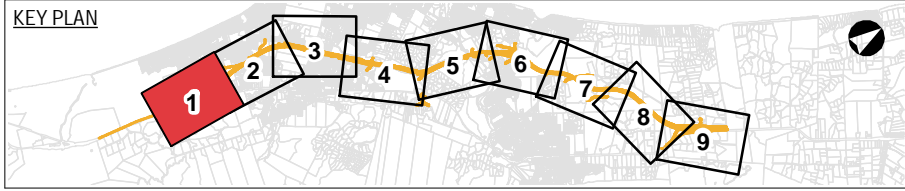
| | | | |
|--------------|---|--|-----------|
| Project: | MACKAYS TO PEKA PEKA EXPRESSWAY | | |
| Title: | CEMP Location of Construction Activities relative to Aquatic Receiving Environments | | |
| Status: | | | |
| Document ID: | | | |
| Drawing No: | EN-MP-003a | | |
| | | | Rev. A |



Path:P:\318\318-AKL\3320901\TG155_Workspaces\01_mxdm2pp-AEE-DWG-GI-GE-003_CEMP_Aquatic_Receiving_Environments.mxd

Legend
 Refer to Overview Map

This map contains data derived in part or wholly from sources other than Beca, and therefore, no representations or warranties are made by Beca as to the accuracy or completeness of this information.
 Map intended for distribution as a PDF document. Scale may be incorrect when printed.
 Contains Crown Copyright Data. Crown Copyright Reserved.



Original Scale (A3)
 1:5,000

| | | | |
|----------|-----------|----------|----------|
| | | | |
| | | | |
| | | | |
| | | | |
| A | AYF | AH4 | 27/03/12 |
| Revision | Amendment | Approved | Date |



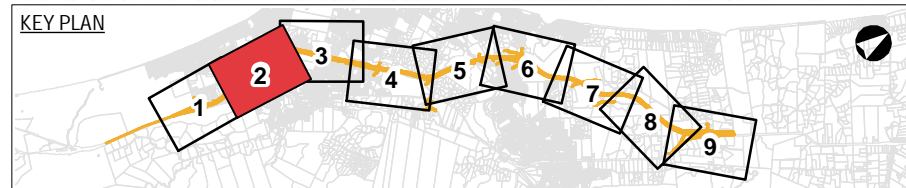
| | | | |
|--------------|--|--|--------|
| Project: | MACKAYS TO PEKA PEKA EXPRESSWAY | | |
| Title: | CEMP Location of Construction Activities relative to Aquatic Receiving Environments Page 1 of 9 | | |
| Status: | | | |
| Document ID: | | | |
| Drawing No: | EN-MP-003 | | |
| | | | Rev. A |



Legend
Refer to Overview Map

This map contains data derived in part or wholly from sources other than Beca, and therefore, no representations or warranties are made by Beca as to the accuracy or completeness of this information.

Map intended for distribution as a PDF document. Scale may be incorrect when printed.
Contains Crown Copyright Data. Crown Copyright Reserved.

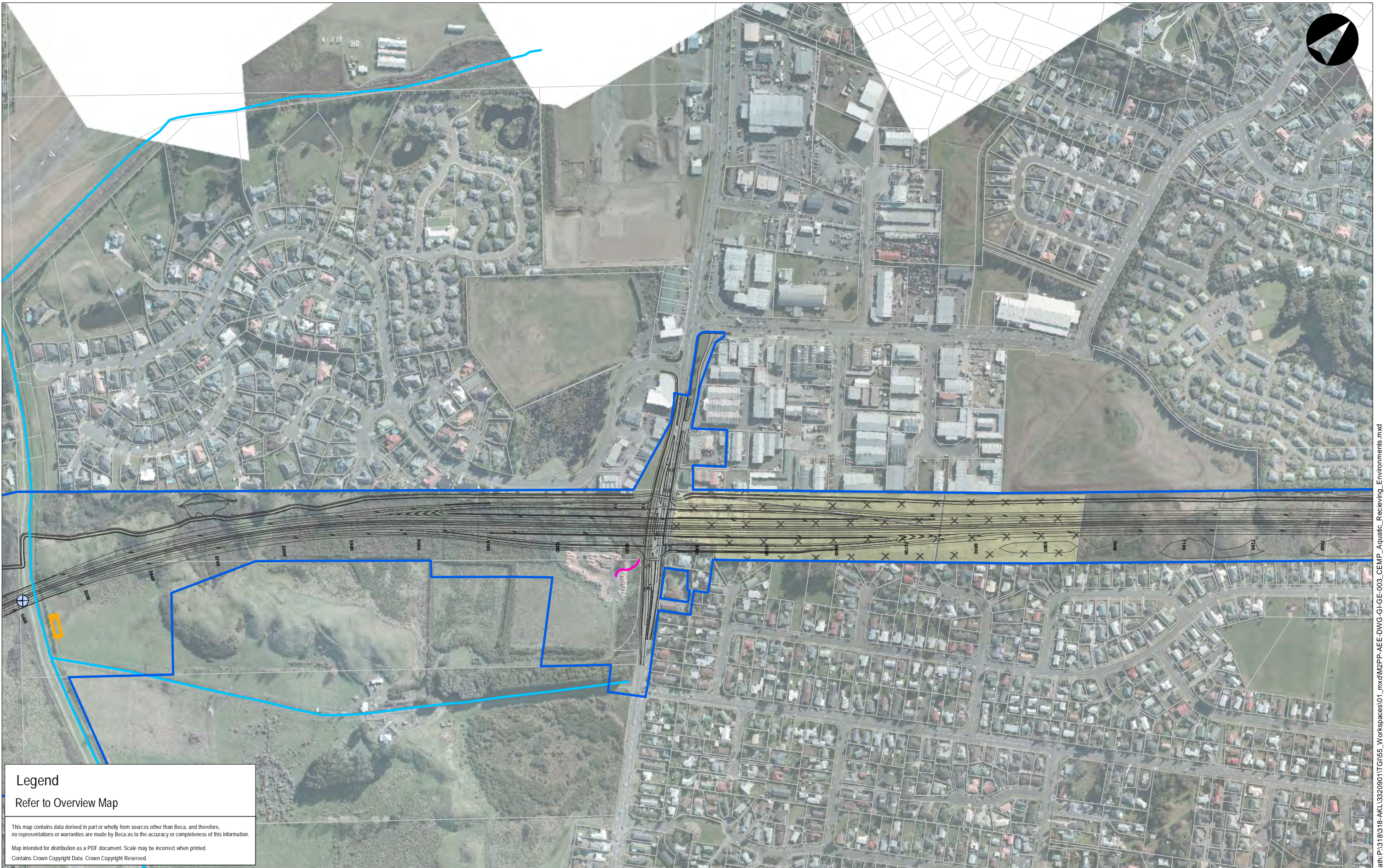


Original Scale (A3)
1:5,000

| | | | |
|----------|-----------|----------|----------|
| | | | |
| | | | |
| | | | |
| A | AYF | AH4 | 27/03/12 |
| Revision | Amendment | Approved | Date |

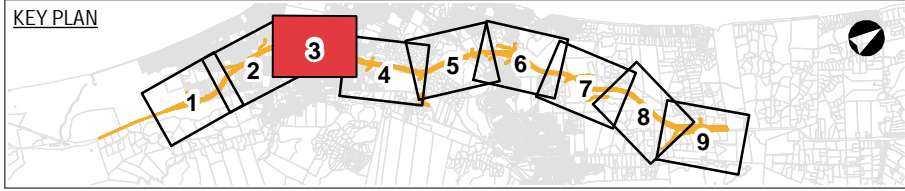


| | | | |
|--------------|--|------|---|
| Project: | MACKAYS TO PEKA PEKA EXPRESSWAY | | |
| Title: | CEMP Location of Construction Activities relative to Aquatic Receiving Environments Page 2 of 9 | | |
| Status: | | | |
| Document ID: | | Rev. | |
| Drawing No: | EN-MP-003 | | A |



Legend
 Refer to Overview Map

This map contains data derived in part or wholly from sources other than Beca, and therefore, no representations or warranties are made by Beca as to the accuracy or completeness of this information.
 Map intended for distribution as a PDF document. Scale may be incorrect when printed.
 Contains Crown Copyright Data. Crown Copyright Reserved.



Original Scale (A3)
 1:5,000

| | | | |
|----------|-----------|----------|----------|
| | | | |
| | | | |
| | | | |
| | | | |
| A | AYF | AH4 | 27/03/12 |
| Revision | Amendment | Approved | Date |



| | | | |
|-------------|-----------|--|---|
| Project: | | MACKAYS TO PEKA PEKA EXPRESSWAY | |
| Title: | | CEMP Location of Construction Activities relative to Aquatic Receiving Environments Page 3 of 9 | |
| Status: | | Document ID: | |
| Drawing No: | EN-MP-003 | Rev. | A |