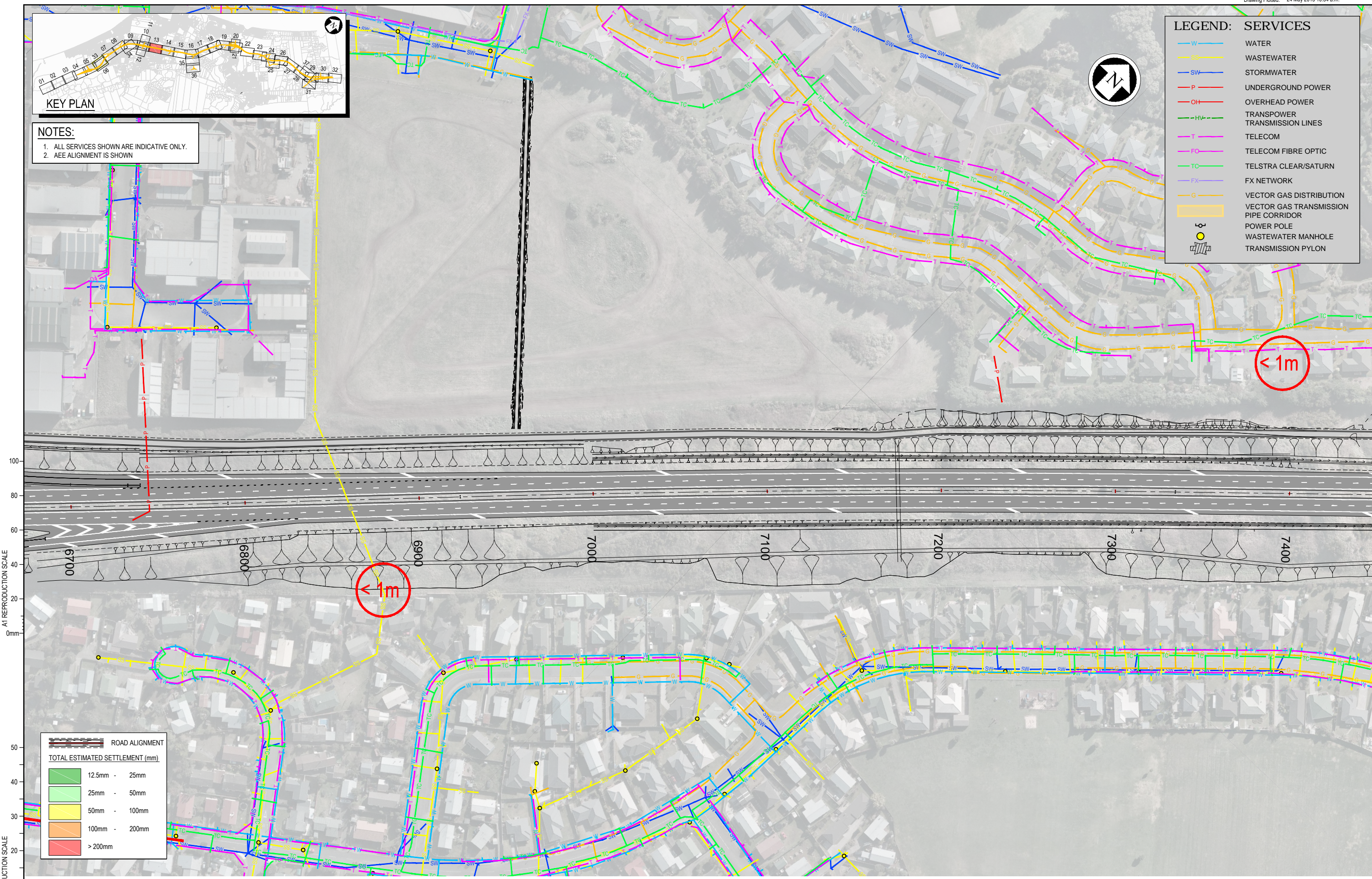


**NOTES:**  
 1. ALL SERVICES SHOWN ARE INDICATIVE ONLY.  
 2. AEE ALIGNMENT IS SHOWN

**LEGEND: SERVICES**

- W — WATER
- SS — WASTEWATER
- SW — STORMWATER
- P — UNDERGROUND POWER
- OH — OVERHEAD POWER
- HV — TRANSPOWER TRANSMISSION LINES
- T — TELECOM
- FO — TELECOM FIBRE OPTIC
- TC — TELSTRA CLEAR/SATURN
- FX — FX NETWORK
- G — VECTOR GAS DISTRIBUTION
- (Yellow Box) — VECTOR GAS TRANSMISSION PIPE CORRIDOR
- — POWER POLE
- — WASTEWATER MANHOLE
- — TRANSMISSION PYLON



A1 REPRODUCTION SCALE  
 0mm

A3 REPRODUCTION SCALE  
 0mm

**ROAD ALIGNMENT**

**TOTAL ESTIMATED SETTLEMENT (mm)**

Green	12.5mm - 25mm
Light Green	25mm - 50mm
Yellow	50mm - 100mm
Orange	100mm - 200mm
Red	> 200mm

No.	Revision	By	Chk	Chk.V	Appd	Date
A	POST CONSENT, SEMP UPDATE					21.05.13

Original Scale (A1) 1:1000	Design Drawn MP	21.05.13	Approved For Construction?
Reduced Scale (A3) 1:2000	Design Verifier Dwg Check		Date

\* Refer to Revision 1 for Original Signature

**Mackays to Peka Peka**

Project: SH1 MACKAYS TO PEKA PEKA EXPRESSWAY  
 RP 1012/0.00 TO 1023/5.00

Title: EXISTING SERVICES SETTLEMENT CONTOURS

Drawing No: M2PP-200-D-DWG-0213

Rev: A

ORIGINAL DRAWING  
 IN COLOUR

**FOR INFORMATION  
 NOT FOR CONSTRUCTION**

DETAIL DESIGN (DET)

Document No. M2PP-200-D-DWG-0213.DWG