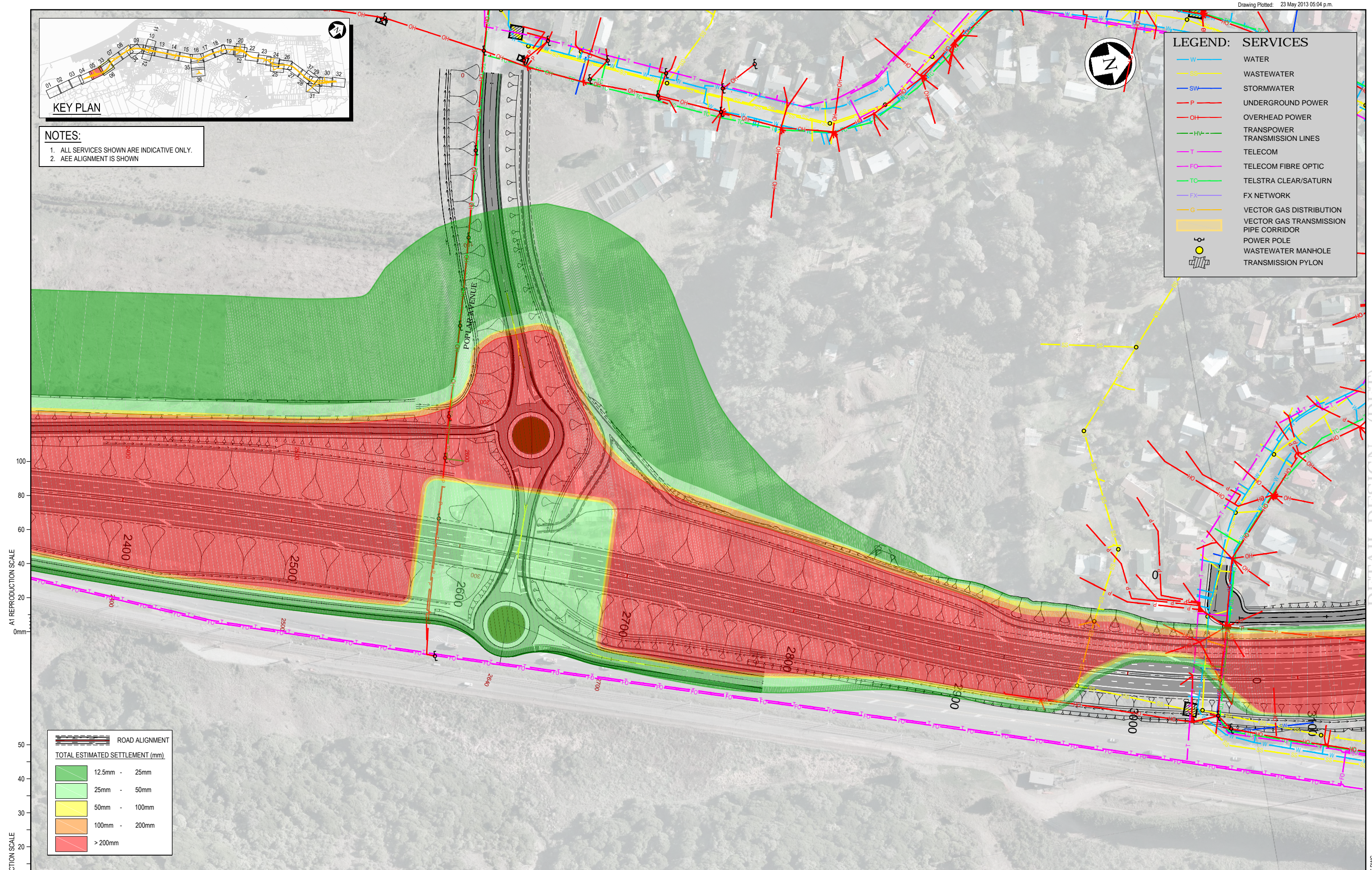


NOTES:
 1. ALL SERVICES SHOWN ARE INDICATIVE ONLY.
 2. AEE ALIGNMENT IS SHOWN

LEGEND: SERVICES

- W WATER
- SS WASTEWATER
- SW STORMWATER
- P UNDERGROUND POWER
- OH OVERHEAD POWER
- HV TRANSPOWER TRANSMISSION LINES
- T TELECOM
- FO TELECOM FIBRE OPTIC
- TC TELSTRA CLEAR/SATURN
- FX FX NETWORK
- G VECTOR GAS DISTRIBUTION
- VECTOR GAS TRANSMISSION PIPE CORRIDOR
- POWER POLE
- WASTEWATER MANHOLE
- ⊕ TRANSMISSION PYLON



A1 REPRODUCTION SCALE
0mm

A3 REPRODUCTION SCALE
0mm

ROAD ALIGNMENT

TOTAL ESTIMATED SETTLEMENT (mm)

	12.5mm - 25mm
	25mm - 50mm
	50mm - 100mm
	100mm - 200mm
	> 200mm

DETAIL DESIGN (DET)

No.	Revision	By	Chk	Chk.V	Appd	Date
A	POST CONSENT, SEMP UPDATE	MP				21.05.13

Original Scale (A1) 1:1000	Design Drawn MP	21.05.13	Approved For Construction*
Reduced Scale (A3) 1:2000	Design Verifier Dwg Check		Date

* Refer to Revision 1 for Original Signature

Project: SH1 MACKAYS TO PEKA PEKA EXPRESSWAY
 RP 1012/0.00 TO 1023/5.00

Title: EXISTING SERVICES SETTLEMENT CONTOURS

Drawing No: M2PP-200-D-DWG-0205

Rev: A

ORIGINAL DRAWING
 IN COLOUR

FOR INFORMATION
 NOT FOR CONSTRUCTION