

| TP217 (2013) | | | |
|--------------------|-----|-------------------|-----|
| Environmental Risk | | Human Health Risk | |
| mg/kg | | mg/kg | |
| As | 119 | As | 119 |
| Cr | 440 | | |
| Cu | 146 | | |

| TP214 (2011) | |
|--------------|------|
| mg/kg | |
| BaP | 0.74 |

| TP209 (2011) | | | |
|--------------------|-----|-------------------|-------|
| mg/kg | | | |
| Environmental Risk | | Human Health Risk | |
| BaP | 380 | BaP | 380 |
| | | BaP eq. | 602 |
| | | Napthalene | 4300 |
| | | TPH C7-C9 | 210 |
| | | TPH C10-C14 | 10400 |

TP203 (2011)
Suspected Asbestos Encountered

TP204 (2011)
Suspected Asbestos Encountered

Legend

- Environmental Test Pits
- Non-natural Materials Encountered
- Watercourse
- Alignment
- Designation Boundary

This map contains data derived in part or wholly from sources other than Beca, and therefore, no representations or warranties are made by Beca as to the accuracy or completeness of this information.
Map intended for distribution as a PDF document.
Scale may be incorrect when printed.
Contains Crown Copyright Data. Crown Copyright Reserved.

N

0 12.5 25 50
Metres

Scale 1:1,000 at A3

Notes:

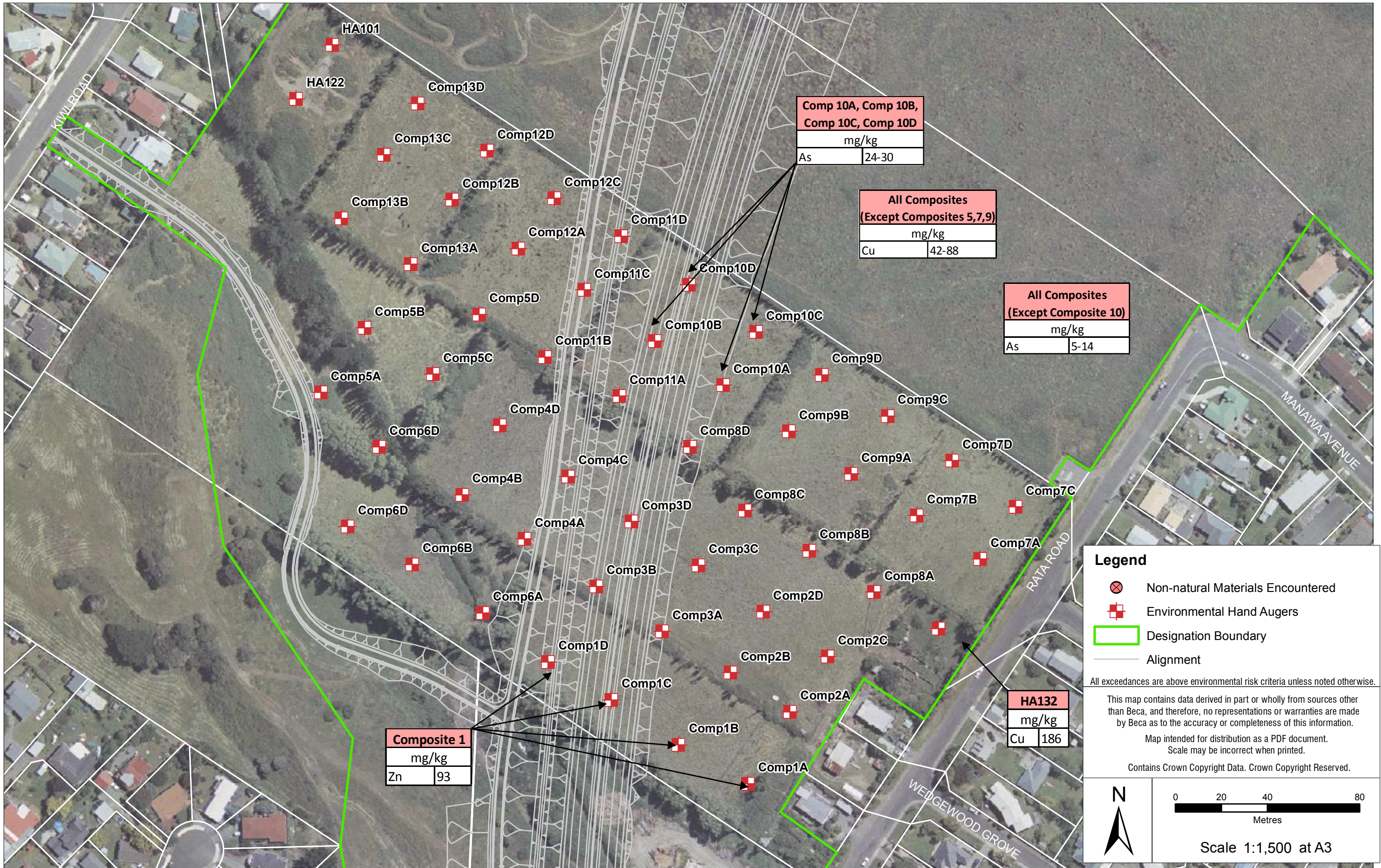
| Revision | Description | AYF | Date |
|----------|------------------------|----------|----------|
| A | CONTAMINANTS DISPLAYED | AYF | 03/05/13 |
| | Amendment | Verified | Date |

| Revision | Description | AYF | Date |
|----------|------------------------|----------|----------|
| A | CONTAMINANTS DISPLAYED | AYF | 03/05/13 |
| | Amendment | Verified | Date |



| | |
|--|---|
| Project: MACKAYS TO PEKA PEKA EXPRESSWAY | |
| Title: Contaminants Exceeding Guideline Values Sector 2: 55 Rata Road | Status: Document ID: Drawing No: GIS-3320901-99 |
| | Rev: A |

Path: P:\318\318-AKL\3320901\TGI\55_Workspaces\01_mxd\GIS-3320901-99_ContaminantsExceedingGuidelines_55RataRd.mxd



Legend

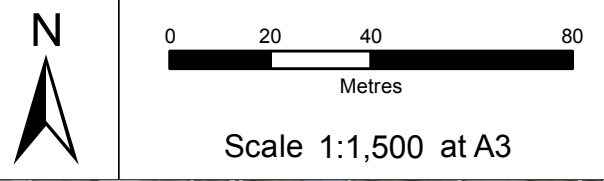
- ⊗ Non-natural Materials Encountered
- ⊕ Environmental Hand Augers
- ▭ Designation Boundary
- Alignment

All exceedances are above environmental risk criteria unless noted otherwise.

This map contains data derived in part or wholly from sources other than Beca, and therefore, no representations or warranties are made by Beca as to the accuracy or completeness of this information.

Map intended for distribution as a PDF document. Scale may be incorrect when printed.

Contains Crown Copyright Data. Crown Copyright Reserved.



Notes:

| | | | |
|--|--|--|--|
| | | | |
| | | | |
| | | | |
| | | | |
| | | | |
| | | | |
| | | | |
| | | | |
| | | | |
| | | | |
| | | | |

| | | | |
|--|--|--|--|
| | | | |
| | | | |
| | | | |
| | | | |
| | | | |
| | | | |
| | | | |
| | | | |
| | | | |
| | | | |
| | | | |



Project: **MACKAYS TO PEKA PEKA EXPRESSWAY**

Title: Contaminants Exceeding Guideline Values
Sector 2: 58 Kiwi Road

| | |
|--------------|---|
| Status: | |
| Document ID: | |
| Drawing No: | |
| Rev: | A |

GIS-3320901-100

Path: P:\318\318-AKL\3320901\TG155_ Workspaces\01_ mxd\GIS-3320901-100_ContaminantsExceedingGuidelines_58KiwiRoad.mxd