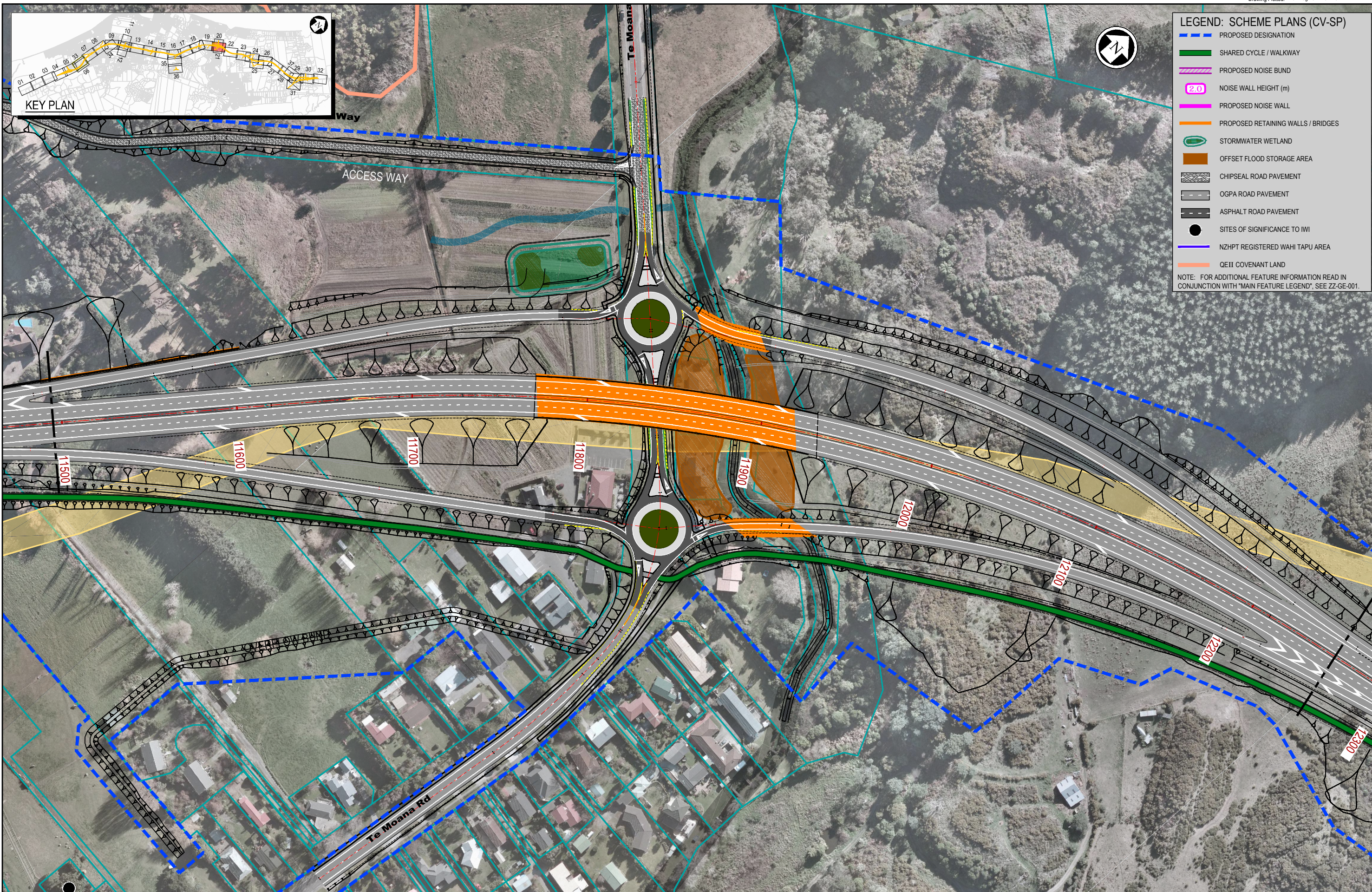


**ANNEXURE B: AMENDED FIGURE CV-SP-120 (TE MOANA ROAD
OGPA)**

Figure CV-SP-120 (amended)



LEGEND: SCHEME PLANS (CV-SP)

- PROPOSED DESIGNATION
- SHARED CYCLE / WALKWAY
- PROPOSED NOISE BUND
- 2.0 NOISE WALL HEIGHT (m)
- PROPOSED NOISE WALL
- PROPOSED RETAINING WALLS / BRIDGES
- STORMWATER WETLAND
- OFFSET FLOOD STORAGE AREA
- CHIPSEAL ROAD PAVEMENT
- OGPA ROAD PAVEMENT
- ASPHALT ROAD PAVEMENT
- SITES OF SIGNIFICANCE TO IWI
- NZHPT REGISTERED WAHI TAPU AREA
- QEII COVENANT LAND

NOTE: FOR ADDITIONAL FEATURE INFORMATION READ IN CONJUNCTION WITH "MAIN FEATURE LEGEND". SEE ZZ-GE-001.

NOTES:

Original Scale (A3)					
1:2000					
2	AEE PAVEMENT CORRECTION	NRN	30.08.12		
1	AEE LODGEMENT	NRN	15.03.12		
Revision:	Amendment:	Approved:	Date:		



MACKAYS TO PEKA PEKA EXPRESSWAY	
PROPOSED EXPRESSWAY SCHEME PLAN SHEET 20 OF 37	
Status: FOR CONSENTING	
Document ID: M2PP-AEE-DWG	Rev:
Drawing No: CV-SP-120	2