

94

Homer Tunnel Safety Improvements Project

A unique feature of the new shelter is the distinctive local Iwi artwork etched into its entrance facade.



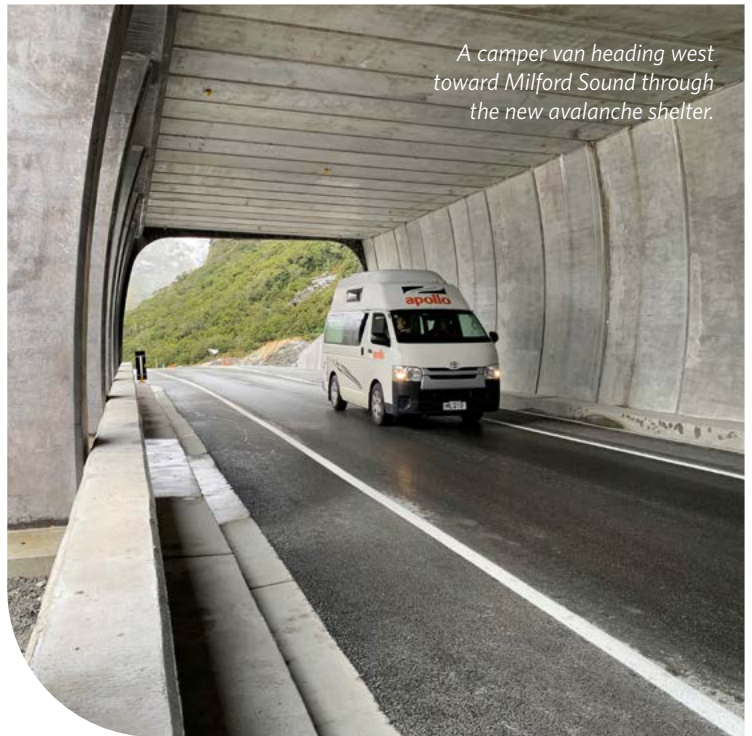
The Homer Tunnel on SH94 from Te Anau to Milford Sound Piopiotahi is now even safer, with the recent completion of a new avalanche shelter on the Te Anau side of the tunnel.

NZ Transport Agency Waka Kotahi (NZTA) has worked to deliver a \$29 million programme over the last three years focused on improving safety for all Homer Tunnel users and work crews.

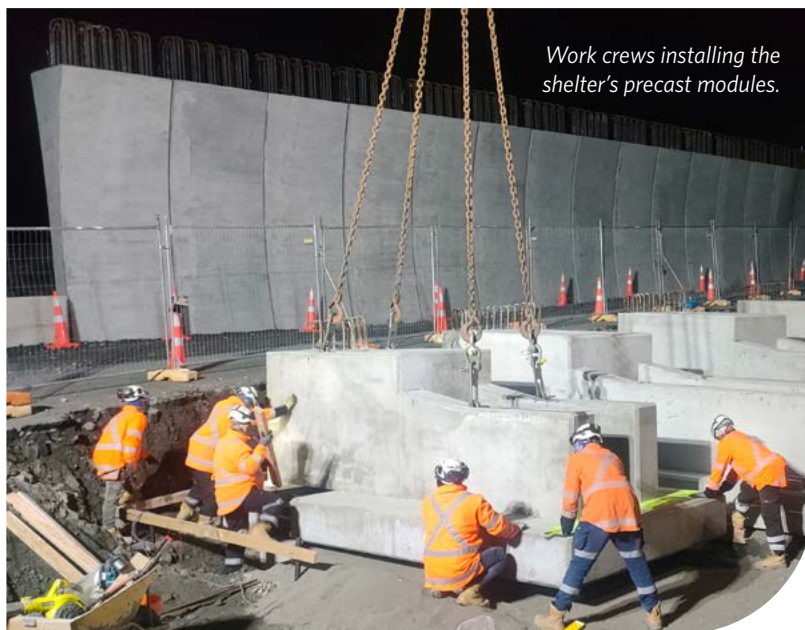
The highway, the only road to iconic Milford Sound, is an economic lifeline for Milford Sound Piopiotahi based tourism and commercial fishing businesses. They rely on the road to be safe and resilient, to continue their major contribution to the economic prosperity of the region.

The surrounding mountainous terrain and extreme weather meant the only window to safely build the shelter was in this area's short summer season from November to May. It is a credit to the dedication and hard work of the project team, who got this job over the finish line in such a tight time frame, in harsh mountainous terrain. There was the additional challenge of working in a World Heritage National Park and carefully managing the inherent environmental sensitivities of the area.

Innovation and great teamwork saw this job completed on time. Playing a big part in that was the decision to opt for a new shelter design that was portable and modular. Careful attention was given to ensuring the design blended in naturally with its breath-taking alpine surroundings.



A camper van heading west toward Milford Sound through the new avalanche shelter.



Work crews installing the shelter's precast modules.

The shelter includes 165 pre-cast concrete modules made off-site then transported to the tunnel for assembly. These played a major part in the fast, safe, and efficient completion of the new shelter that replaces the previous 86-year-old avalanche shelter.

Other work in the last three years included upgrading the tunnel power system and lighting and a new plant and equipment room. A duct along the full 1.2km length of the tunnel will now protect all cabling in a fire, and a solar-powered communications tower upgrade delivers better coverage in this remote wilderness area.



More project information is available at:

nzta.govt.nz/projects/homer-tunnel-safety-improvements/
nzta.govt.nz/projects/sh94-milford-road/

Email office@milfordroad.co.nz or homertunnelsafety@nzta.govt.nz

Phone 03 249 7004