

# Christchurch Northern Corridor Styx River

PROJECT UPDATE

08 FEBRUARY 2019



## PILING WORK FOR STYX RIVER MOTORWAY BRIDGE STARTS

The Christchurch Northern Corridor (CNC) Alliance is starting the concrete piling work for the Styx River bridge foundation.

We are installing 10 steel reinforced concrete piles, five on each side of the bridge. We vibrate the steel casing in the ground in sections, first 18m and then another section of 12m.

The 30m of steel casing per pile creates a strong foundation for the bridge.

### What is piling?

Piles are an essential support needed for the Styx River motorway bridge. This type of piling is done by driving a steel casing down to a target depth, scooping out the dirt, adding reinforcing and then pouring concrete inside to form the piles.

The pile casings will be hammered into the ground beneath the bridge until the end makes contact with a hard layer approximately 30metres below ground level. The hard layer and the friction between the pile and the ground will support the new bridge.

This work will be noisy and we want to thank you for your continued patience and understanding while we complete the bridge work and motorway alignment in your area.

The piling work will take around five months to complete. In mid-July we will reinforce the concrete abutment across all of the piles on either side so it can carry the 10 beams. The beams will be placed by the end of September this year; work will continue on the upper structure for completion by early 2020.



**REDUCED**  
COMMUTER  
TRAVEL TIME



**REDUCED**  
CONGESTION



**IMPROVE**  
SAFETY



**IMPROVE**  
WALKING  
AND CYCLING



**SUPPORT**  
ECONOMIC  
GROWTH



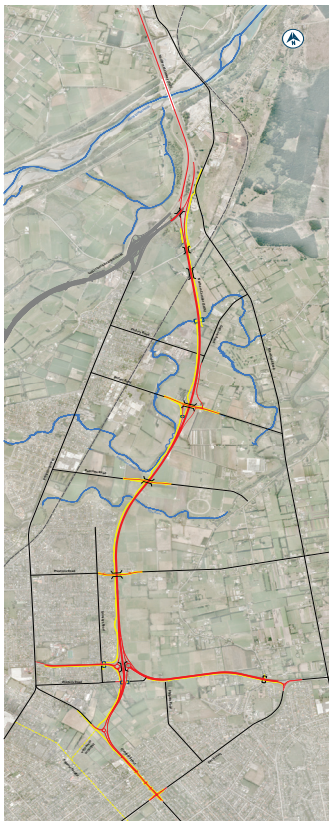
We have completed the Kā Pūtahi creek bridge.



Styx River bridge abutment with surcharge layer of gravel.



Part of the steel reinforcement that will be placed in the steel casing to fill with concrete.



## FUTURE CONNECTION

When we open the motorway in 2020 a bridge will take the southbound lanes of SH1 over the northbound lanes of the CNC motorway.

The existing Chaney's on-ramp will be removed, meaning there will be no access at this point onto the motorway.

Access will be further west at the Main North Road/Dickey's Road intersection.

You will still be able to exit onto Main North Road from SH1 at the Marshland Road/Chaney's/Kainga exit.

PROJECT OVERVIEW MAPS ARE AVAILABLE ONLINE

## MORE ABOUT OUR INFRASTRUCTURE

The project involves local road and motorway bridges, subways, roundabouts and a shared user path. If you would like to understand and find out more on how to use all the infrastructure on the CNC, watch the first two of six animated videos on our project website:

[www.nzta.govt.nz/cnc](http://www.nzta.govt.nz/cnc)

Also in the video section on our website is a progress update on the project filmed with a drone.



You can call us on 0800 262 200 or email us at [info@cncalliance.co.nz](mailto:info@cncalliance.co.nz) or visit our office at 145 Winters Road in Mairehau, accessed from QEII Drive only left in and out.