

Christchurch Northern Corridor State Highway 1

PROJECT UPDATE

01 FEBRUARY 2019



SH1 LANE CLOSURE AND CHANEYS ON-RAMP CLOSED

The Christchurch Northern Corridor (CNC) Alliance is progressing well with widening SH1 where it will connect with the new CNC motorway. One traffic lane on SH1 (northbound) needs to be closed for two nights to install steel safety barriers. The Chaney's on-ramp will also need to close for one night only.

One northbound lane on SH1 between Chaney's on-ramp and the Waimakariri River bridge will be closed from 7pm till 8am on **Sunday night 10 February and Monday night 11 February**. The one lane closure could delay your journey.

The Chaney's on-ramp closure will be in place on **Sunday night 10 February**. Please use the Main North Road and Dickeys Road intersection to access SH1.

To allow us to keep both northbound traffic lanes open during the widening work and to ensure the safety of drivers and our crews, we are installing steel safety barriers. We have already installed similar barriers on the southbound highway lanes.

For the safety of the road users and workers, there will be a **temporary 60km/h speed limit** in place along the work site during the installation of the barriers for two nights. A temporary 80km/h speed limit is in place during the widening work.

We are working nights to minimise the traffic impact. The crew need lights to see what they are working on, so you may notice extra light coming from the road.

This work and our lights at night may be a visual distraction on the roadside. For your safety and ours please keep your eyes on your lane, stay focused and have your phone in 'do not disturb' mode.



REDUCED
COMMUTER
TRAVEL TIME



REDUCED
CONGESTION



IMPROVE
SAFETY



IMPROVE
WALKING
AND CYCLING



SUPPORT
ECONOMIC
GROWTH



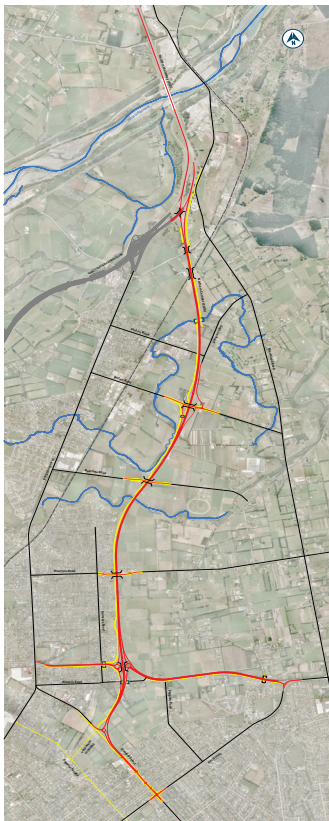
Our foam bitumen stabilisation on SH1 in early January this year.



Safety barrier installation at night.



Installation of the steel headstocks underneath the Waimakariri bridge to strengthen the piers.



FUTURE CONNECTION

When we open the motorway in 2020 a bridge will take the southbound lanes of SH1 over the northbound lanes of the CNC motorway.

The existing Chaney's on-ramp will be removed, meaning there will be no access at this point onto the motorway.

Access will be further west at the Main North Road/Dickey's Road intersection.

You will still be able to exit onto Main North Road from SH1 at the Marshland Road/Chaney's/Kainga exit.

PROJECT OVERVIEW MAPS ARE AVAILABLE ONLINE

MORE ABOUT OUR INFRASTRUCTURE

The project involves local road and motorway bridges, subways, roundabouts and a shared user path. If you would like to understand and find out more information on how to use all the infrastructure on the CNC, watch the first two of six animated videos on our project website: www.nzta.govt.nz/cnc

Also in the video section on our website is a progress update on the project filmed with a drone.



You can call us on 0800 262 200 or email us at info@cncalliance.co.nz or visit our office at 145 Winters Road in Mairehau, accessed from QEII Drive only left in and out.