

Christchurch Northern Corridor QEII Drive piling

PROJECT UPDATE

06 AUGUST 2019



PILING WORK FOR QEII DRIVE MOTORWAY BRIDGE STARTS

The Christchurch Northern Corridor (CNC) Alliance is starting the steel piling work for the QEII Drive bridge foundation.

We are installing 445 steel piles, around 220 on each side of QEII Drive where the new CNC motorway goes over QEII Drive.

We first vibrate the steel piles into the ground and a hammer will complete the piling till the steel hits the firm ground 12m below the surface. The extra steel piles create a strong foundation for the bridge.

What is piling?

Piles are an essential support needed for the CNC motorway bridge over QEII Drive. The hard layer and the friction between the pile and the ground will support the new bridge.

Construction impact

We will have crews on both side of QEII Drive installing the piles. This work will be noisy and we want to thank you for your continued patience and understanding while we complete the bridge work.

After the piling work we will reconstruct the walls. We will install new prefabricated wall panels and construct the new bankseats that support the beams. In the new year we will place the beams.

The piling work starts in the week of **Monday 12 August** on the south side, followed with piling on the north side. We expect to complete the piling work by late October. Work on the upper structure will continue till completion of the motorway by mid 2020.



REDUCED
COMMUTER
TRAVEL TIME



REDUCED
CONGESTION



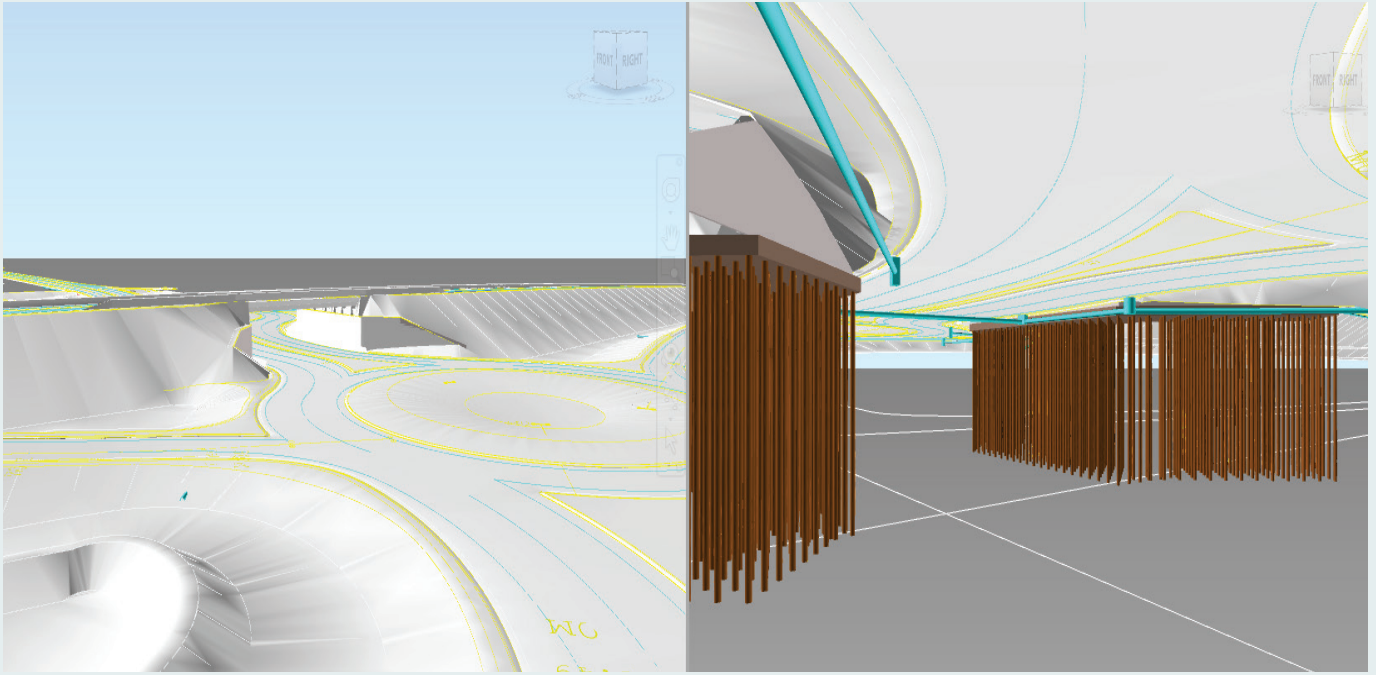
IMPROVE
SAFETY



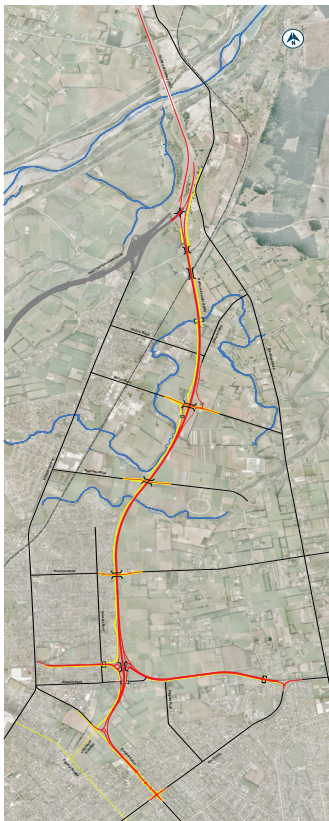
IMPROVE
WALKING
AND CYCLING



SUPPORT
ECONOMIC
GROWTH



3D images showing the above and below ground (piles) structure of the QEII Drive overbridge.



FUTURE CONNECTION

When we open the CNC Motorway in 2020 it will connect at QEII Drive with a 'grade-separated' interchange. The new motorway will go over the top of QEII Drive on a bridge.

Under the overbridge there will be on and off-ramps and two connected roundabouts that will make access in all directions possible. (This interchange will be similar to the Southern Motorway / Curletts Road interchange.)

The motorway will then go through Cranford Basin and connect into Cranford Street via a new roundabout.

MORE ABOUT OUR INFRASTRUCTURE

The project involves local road and motorway bridges, subways, roundabouts and a shared user path. If you would like to understand and find out more on how to use all the infrastructure on the CNC, watch the animated videos on our project website:

www.nzta.govt.nz/cnc

Also in the video section on our website is drone footage on the project progress.



You can call us on 0800 262 200 or email us at info@cncalliance.co.nz or visit our office at 145 Winters Road in Mairehau, accessed from QEII Drive only left in and out.