

Work Notice

February 2017

Winters Road

- * Road Closure Winters Road
- * Construction of the Winters Road subway

Closure



From Tuesday 7 February Winters Road will be closed to all traffic between house numbers 137 and 143.

For motor vehicles this road closure is permanent. For pedestrians and cyclists the closure is temporarily to allow the construction of the subway.

Once construction (we expect six months) is complete we will open the subway to pedestrians and cyclists.

The temporary road closure creates two cul-de-sacs for Winters Road east and west.

Motor vehicle access from Winters Road to QEII Drive will be re-established in 2020 via the new QEII Drive off ramp on the western side of the new motorway and a cul-de-sac will be in place on the eastern side of Winters Road.



A shared pedestrian and cycle path will run almost the entire length of the Christchurch Northern Corridor, from Empire Road to Cranford Street.



Urban design and landscaping subway Winters Road (for illustration purposes only)

Road closure on Winters Rd

From Tuesday 7 February construction will start on Winters Road. We are building the pedestrian subway to maintain pedestrian and cyclist access along Winters Road beneath the new Christchurch Northern Corridor motorway.

WHAT WE ARE DOING

While we are building the subway (a tunnel under a road for use by pedestrians and cyclists) we are also installing a storm water culvert. This new culvert will carry the water from the local stream/ open drain on Winters Road under the new motorway. We will use sheet piling to create a dry and safe trench area for the culvert. Sheet piles are installed and removed by vibration. Piles will be used to support the underpass structure and some service cables and pipes will be diverted.

Traffic Impact

Winters Road will be closed in between 137 and 143 Winters Road. Residents and businesses from 143 to 147 will need to enter and exit Winters Road from QEII Drive.

Residents and businesses from 137 to Fraser Street will need to enter and exit Winters Road from Cranford Street/Fraser Street or enter from Main North Road. Pedestrians and cyclists can still use the existing QEII Drive pedestrian/cycle pathway to enter Winters Road via Grimseys Road.

CONSTRUCTION IMPACTS

Building the culvert, services and the subway will include excavation, piling work, concrete pouring and slab installation. This work will take around six months to complete.

For foundation construction, we have to install around 650 piles. These piles will be driven into the ground using a piling hammer which will operate between 7:30am to 6:00pm Monday to Friday and typically 7:30am to midday on Saturdays.

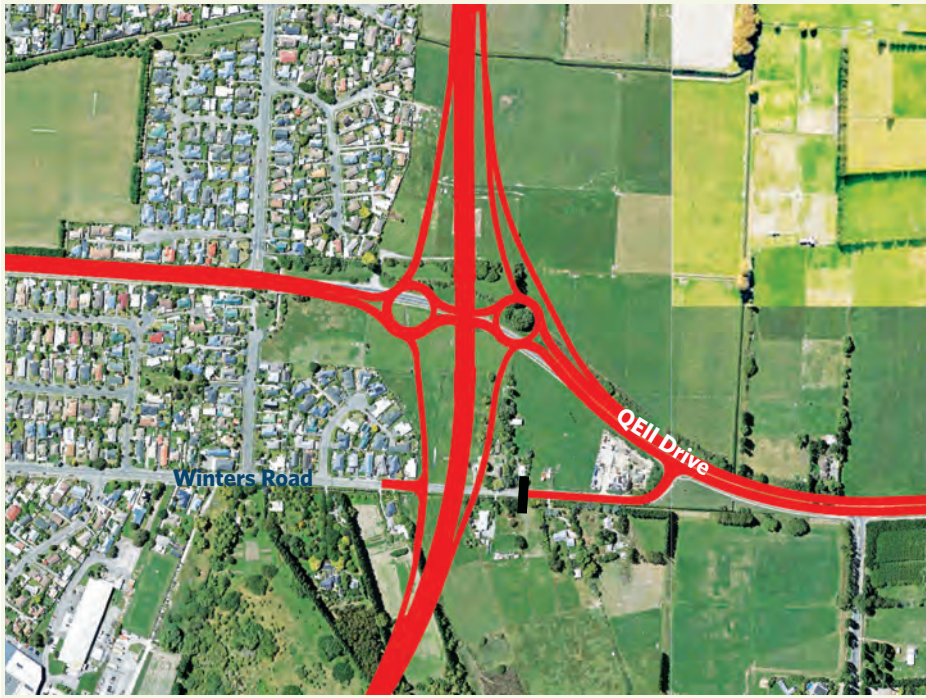


Image on the left: the red lines illustrate the QEII Drive upgrade to four lanes and two new roundabouts, the new motorway and access to Winters Road from QEII Drive and the new motorway. Image below: project signage to recognise our project along the whole alignment. The map below shows the Winters Road work area/road closure section in red.



What's next?

Construction on the new motorway will be ramping up in 2017; we will have crews working in many locations along the project.

EARTHWORKS - WHY ARE WE NOT DIGGING?

The earthworks for the motorway have started. This means you will generally see more trucks coming to and from the entire project site.

These trucks will be bringing in material for the motorway embankments. The new motorway needs around 1.2 million cubic metres of fill.

We will not be excavating for the new road as such; rather we will build it on top of the existing ground. Making the motorway slightly raised about ground level.

Bulk fill material for the embankments will be delivered

using the accesses at: Main North Road, Belfast Road, Prestons Road, Radcliffe Road, QEII Drive, Winters Road and Cranford Street.

The raised embankments to carry the new road will be between two and eight metres high throughout the whole project. Up to eight metres where one road goes over another.

Letting it all settle

We need to allow the ground to settle, the embankments take a long time to settle.

So for a long period of time after the embankments have been constructed, you will not see any diggers, trucks or other heavy machinery on this part of the project.

GENERAL INFORMATION

- Our standard construction work hours are Monday to Saturday between the hours of 7.00am to 7.00pm.
- There will be increased noise and vibration levels associated with most of the construction works. We will do what we can to lessen this.
- Keep yourself and your children, as well as pets and stock at a safe distance from the work site; please stay behind the construction fences at all times.
- All work sites are subject to weather and other unforeseen conditions. Some jobs will be finishing early while others may be delayed or need to be rescheduled.

Need more information? We will stay in touch. The project team will keep you informed and further updates will be provided when work may affect you. General project information will be available on our website and here you can also sign up to receive our newsletters and updates: www.nzta.govt.nz/cnc

You can call or email us on 0800 262 200 and at info@cncalliance.co.nz or visit our office at 145 Winters Road, accessed only from QEII Drive from 7 February 2017.