

Project update

1 February 2017

UPDATE ON WINTERS ROAD

- * Reminder road will be closed.
- * What connectivity will I have when the new motorway is finished?

Requested access to QEII Drive from Winters Road

In 2010 when the CNC project was first consulted on, the proposal was to cul-de-sac Winters Road where it was cut by the Northern Corridor motorway. The local community asked for access to be maintained to QEII Drive in some way.

In 2011 a new plan was developed and consulted on to connect Winters Road west with QEII Drive northbound, with a two way section between QEII Drive and Winters Road.

While this solution would have provided access with QEII Drive a road safety audit has identified this as being unsafe so we had to remove the two-way section. So there is no off-ramp but we have kept a single way connection (the on-ramp) from Winters Road onto QEII Drive.

See Figure 4 on the back page for details.



Figure 3 concept drawing 2011 showing two way section Winters Road with QEII Drive. The one section marked in red hashes has now been removed from the final design plans.



Figure 1 the blue line shows the area of the road closure on Winters Road between 137 and 143. Traffic east on Winters Road can enter and exit from QEII Drive. Traffic west can enter from Main North Road or via Cranford Street and Fraser Street, exit only via Fraser Street/Cranford Street.

Winters Road area and future connections to the motorway

The Christchurch Northern Corridor Alliance is designing the finer details of the new motorway, and QEII Drive and Cranford Street upgrades. We would like to provide you with an update on our design decisions around Winters Road and QEII Drive. See back page for detailed map.

CONCERNS RAISED

Some residents have raised concerns after receiving our work notice in December 2016 advertising the Winters Road subway construction and road closure starting from Tuesday 7 February 2017.

The main concern is the single exit point onto Cranford Street during the construction period. Together with the Council we have considered some measures to alleviate this. We are installing flexi posts and creating dedicated turning lanes to improve the Fraser Street/Cranford Street intersection (the only exit point during the construction period for the Winters Road area west of 137). Suggestions were made to consider a possible temporary opening of the Grimseys Road south cul-de-sac to allow a left turn out onto QEII Drive, however this will change the cul-de-sac and is unlikely to be approved.

We are checking to see if we can reschedule our construction programme around the QEII Drive/Winters Road area so the connection to QEII Drive can be opened earlier.

Intersection Improvements

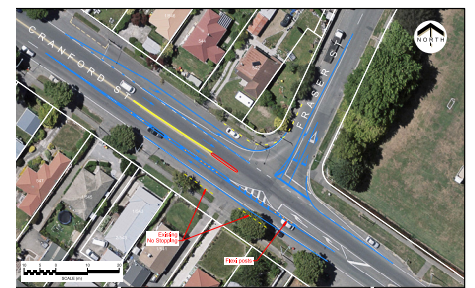


Figure 2 showing the new line marking, flexi posts and a traffic island at the intersection.

To further improve the Cranford Street/Fraser Street intersection a traffic island (see in red in the middle of the road in Figure 2) may be installed, this is conditional on Community Board approval.



Figure 4 The red lines on the map illustrate the QEII Drive upgrade to four lanes and two new roundabouts, the new motorway, the new roundabout near Cranford Street and access to Winters Road from and onto the new motorway and QEII Drive.

What connectivity will I have when the new motorway is finished?

Part of Winters Road (143 to 147) will have direct access from QEII Drive (left-in and out option only). Other Winters Road residents will have direct access to QEII Drive from the motorway. You will also still be able to exit Winters Road via Fraser Street to Cranford Street and enter Winters Road via Fraser Street and via Main North Road (southbound only).

Need more information?

We hope this information is helpful, please don't hesitate to contact the team if you have further questions on the access points and the motorway design and construction.

DROP IN SESSION

The CNC Alliance project team, working for the NZ Transport Agency and the Christchurch City Council have been assigned to design and build and as such there are no further consultations planned on the alignment during the four year construction phase. Although we are not organising public meetings we do appreciate face to face contact and welcome feedback. If you would like to discuss your query in person you can also drop in during our sessions at the Papanui Primary School Library on **Thursday 9 February 2017 from 3pm to 4pm and from 6pm to 7pm.**

We will have project team members available to answer your questions, discuss the project and receive your feedback.

WINTERS ROAD WEST FROM HOUSE NUMBER 137

Coming from town onto Cranford Street you will be able to take the new roundabout at Cranford Street onto the motorway and exit onto Winters Road when the new motorway is finished. From Winters Road you will enter the on-ramp to QEII Drive and then turn left or right at the new roundabouts to go east or west on QEII Drive or head north onto the new motorway.

If you drive from the north on the new motorway you will need to U-turn on Cranford Street at the turning bay in front of PlaceMakers, return onto the motorway heading north via the new Cranford Street roundabout and then turn left onto Winters Road. See figure 4 for your options.

WINTERS ROAD 143 - 147

When the upgrade of QEII Drive is complete Winters Road residents from 143 to 147 will have access from QEII Drive (left-in and out option only).

There will be no option to turn right onto QEII Drive and no option to turn right into Winters Road from QEII Drive. As part of the QEII Drive upgrade to four lanes we will establish a median.

To head east on QEII Drive you will need to turn left and then U-turn at the new roundabout. Coming home from Main North Road you can U-turn at the existing Innes Road/QEII Drive roundabout to then turn left onto Winters Road.

There will be no vehicle through traffic on Winters Road as this part of Winters Road will stay a cul-de-sac. Pedestrians and cyclists can continue on Winters Road using the new subway.

CONTACT US

Contact us via **0800 262 200** or visit our office during office hours (9am - 5pm) at **145 Winters Road** (reception ph 03 3365135) or email us at **info@cncalliance.co.nz**

Please note that from 7 February you can only reach our project office at 145 Winters Road from QEII Drive.