

Christchurch Northern Corridor Cranford Street Upgrade

PROJECT UPDATE

4 OCTOBER 2019



Cranford to Innes

Cranford Street will be upgraded to four lanes with a central median, a cycle lane on both sides of the road and footpaths.

The Cranford Street/Innes Road intersection will be widened and turning lanes and signals will be improved.

The CNC off-road cycle path will finish at McFaddens Road, where a signalised pedestrian crossing will link cyclists to the on-road cycle lanes. The CNC shared use path will connect with the Papanui Parallel, a new path for the linkage will be constructed in 2020.

ROAD SURFACE WORK AND CONSTRUCTION OF CENTRAL MEDIAN

The Christchurch Northern Corridor (CNC) Alliance team will start the Cranford Street road repairs and asphalt surface work from **Monday 14 October**.

Construction and traffic impact

To resurface the road, we will move traffic all the way to the east (Mairehau) side of the road, so we can mill, repair and asphalt the opposite (west) lanes. This work will take two to three weeks depending on the weather and the conditions we find under the old road surface.

During the work there will be a **30km/h speed limit** in place; Knowles Street, Weston Road and McFaddens Road will be closed on the west (St. Albans) side of Cranford and left-in left-out on the east side. Access to homes and businesses will still be possible except when the milling or asphalt machine is passing.

On-street parking will be very limited. We will have to move the bus stops near McFaddens Road and Knowles

Street. A temporary bus stop will be set up, signs will indicate the temporary bus stop area.

In early November, the team will move to the other side of Cranford Street to repair and asphalt the east shoulder.

Finally, in late November we will split traffic onto the two new lanes to repair and asphalt the centre of the road and start work on the central median.

This work involves excavations, concrete pours and landscaping. The side streets will stay left-in left-out from this time on.

This work will all take place during the day. The milling machine and rollers will be noisy and cause vibrations.

What's next?

From late-November we will start road surfacing work at the Innes Road intersection. This work will take two weeks and will happen at night. Traffic lane closures and diversions will be in place.



REDUCED
COMMUTER
TRAVEL TIME



REDUCED
CONGESTION



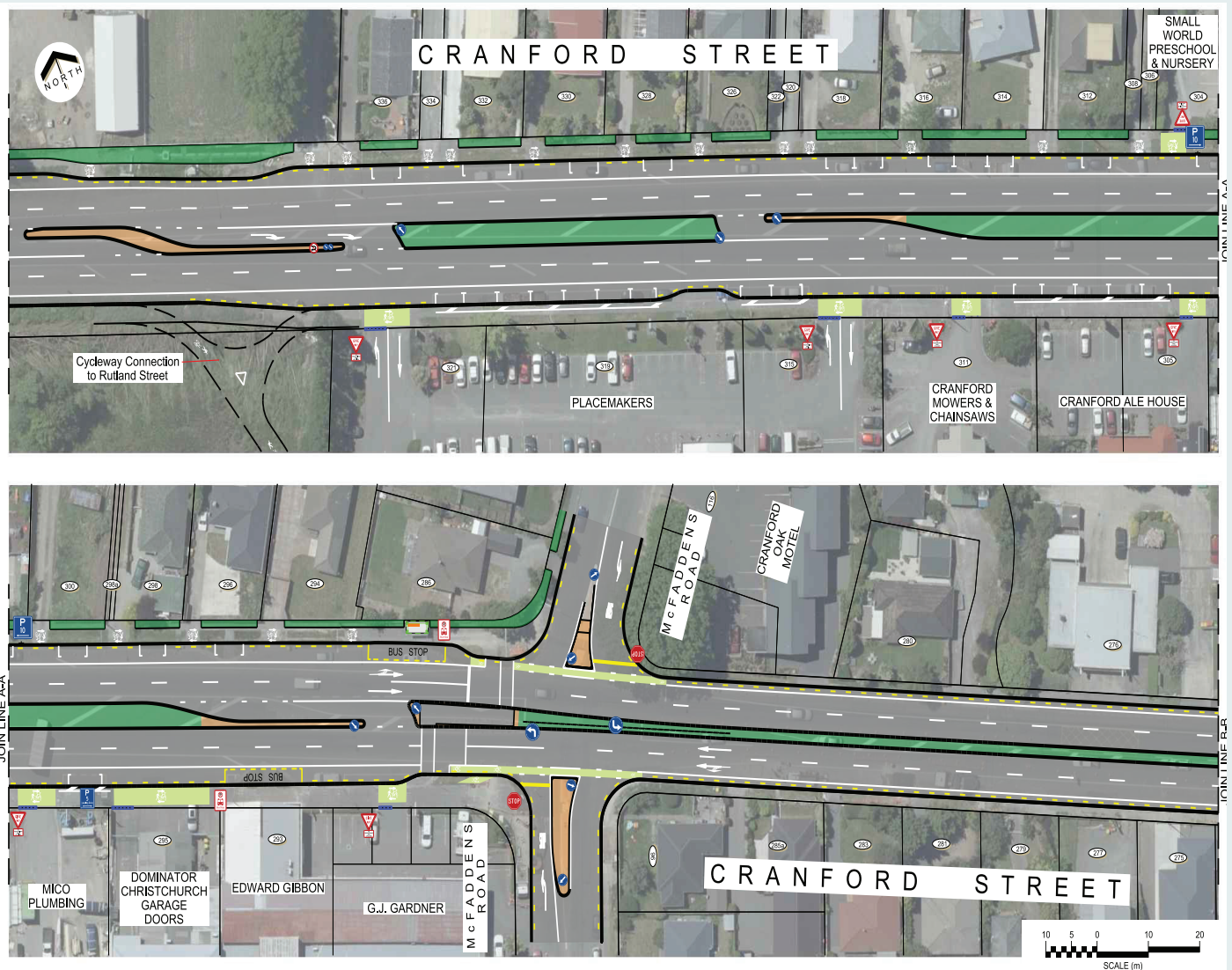
IMPROVE
SAFETY



IMPROVE
WALKING
AND CYCLING



SUPPORT
ECONOMIC
GROWTH



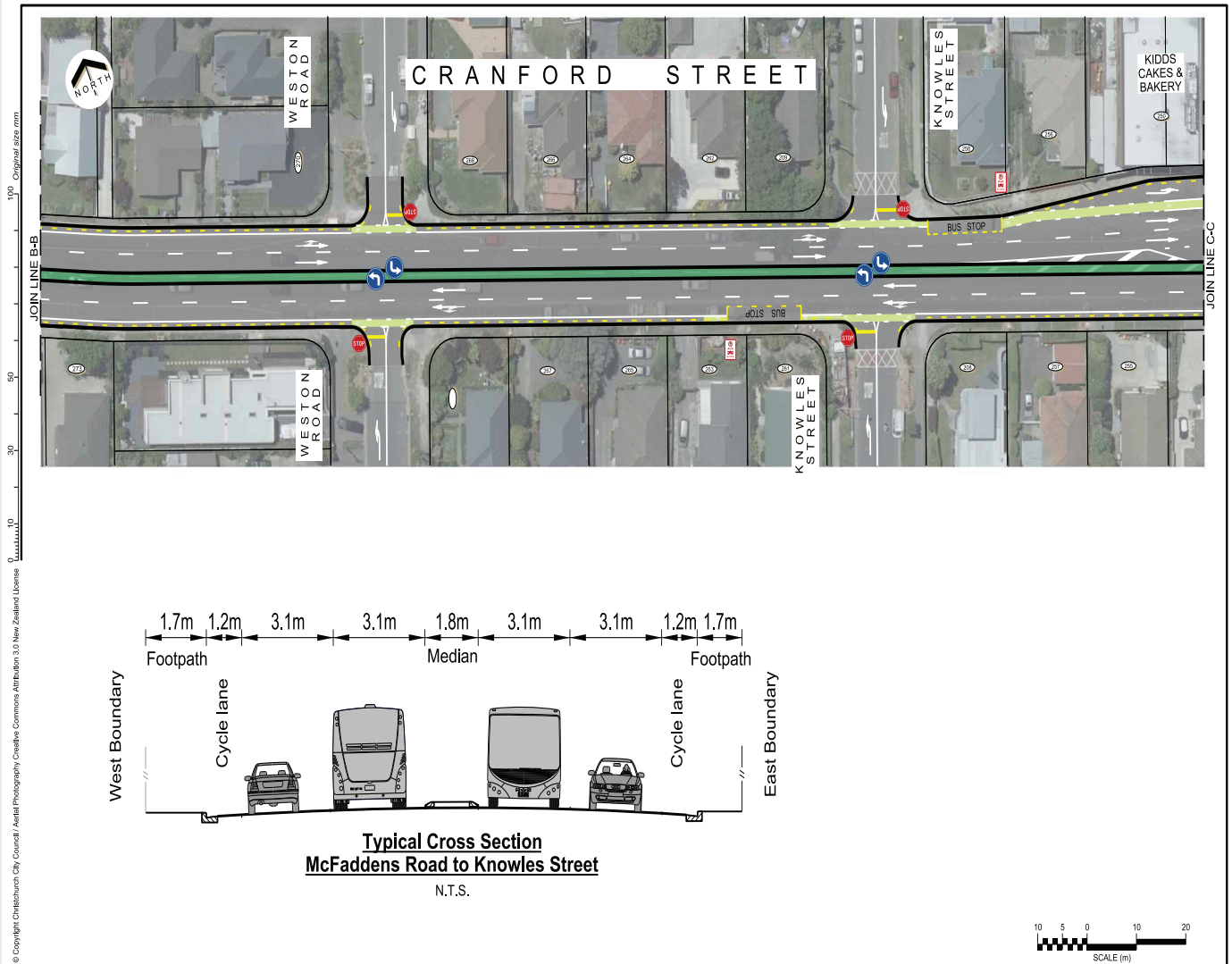
Cranford Street Upgrade final detail design

REDUCED ON-STREET PARKING ON CRANFORD STREET

We have made changes to the final design for Cranford Street, after last years' consultation with the local businesses, residents and the preschool.

The plan now includes some on-street parking however, the on-street parking on Cranford Street from McFaddens Road to Innes Road, will be removed as there is not enough room with the widening of the road to four lanes. Other changes are:

- The reduced on-street parking will make it easier to see the pedestrians and cyclists on the shared path. When entering and exiting from the business parking lots and driveways, drivers will need to give way to the pedestrians and cyclists on the two-way shared paths on Cranford Street.
- Traffic calming measures (speed cushions) will be placed in front of the paths at the entry and exits of the commercial driveways. When leaving and entering the business parking lots, drivers will have to reduce speed before crossing the path to enter and exit Cranford Street.
- A signalised pedestrian crossing has been installed near the McFaddens Road intersection to provide a safe crossing point half way between the motorway and the Innes Road intersection. The hardware has been installed, the traffic signals will be installed during the median construction and the lights will be activated following the completion of work on Cranford Street and the Innes Road intersection.
- To allow for a safe drop-off and pick-up point in front of the Small World Preschool we will install a P10 parking restriction for some of the on-street car parking spaces in this area.



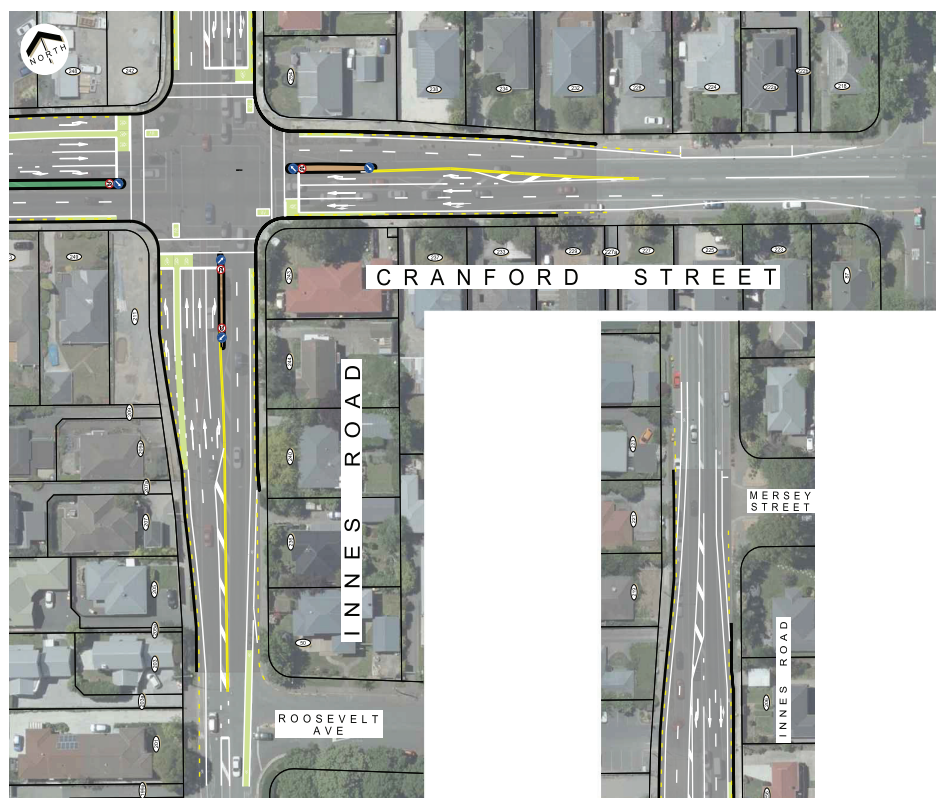
Cranford Street Upgrade and Innes Road intersection final detail design

CRANFORD STREET/INNES ROAD INTERSECTION

We are upgrading the Cranford Street and Innes Road intersection. The improvements at the intersection include widening the intersection, right turning arrows and painted cycle lanes.

The two existing bus stops near the Cranford Street and Innes Road intersection were removed to accommodate the intersection upgrade.

Two new bus stops will be installed near the Knowles Street intersection.





A roundabout will connect the motorway with Cranford Street.



Within the central median there will be places to make a u-turn and places to cross the road for pedestrians.



Milling the road will be noisy. Please take care around the work site during the surface work.

CRANFORD STREET ROUNDABOUT

The CNC motorway goes over QEII Drive, through the Cranford Basin to join Cranford Street via a roundabout. If you would like more information on this roundabout and other infrastructure on our project, watch our animated video series on our website: www.nzta.govt.nz/cnc

How to use the Cranford Street roundabout – December 2018

This video shows how to use the roundabout being built where the Christchurch Northern Corridor (CNC) meets Cranford Street when it is finished in 2020.



WHAT YOU NEED TO KNOW

- › Our regular working hours are Monday to Saturday between 7am and 7pm.
- › There will be noise and vibrations associated with the work we have to do. We will do what we can to lessen this.
- › Keep yourself, your children and pets at a safe distance from the work site. Please stay behind the construction fences at all times.
- › All work sites are subject to weather and other unforeseen conditions.



You can call us on **0800 262 200** or email us at info@cncalliance.co.nz or visit our office at 145 Winters Road, accessed left in and out only from QEII Drive.