

# Christchurch Northern Corridor

December 2016

## TEST PILES NEAR QEII DRIVE

During the build of the new Christchurch Northern Corridor we will be using timber piles to support the many structures on the motorway.

To check our method and to see how well the piles can be pushed into the current ground conditions we will test the piling at a location within the motorway alignment.

## Construction Impact

Work starts early December and will be completed before Christmas. There will be a 50tonne crane with a pile hammer on site to install eight piles.

The timber piles will go 12 metres into the ground. We are monitoring the vibrations and the noise levels during the piling works.

Part of the test is to check how long it will take to install one pile.

Nearby residents may experience ground-borne noise and vibrations during the

installation of piles.

The level of vibration is well below the level that may cause damage to homes or properties.

## PILING LOCATION

The location for the test piling is within the alignment of the project on NZ Transport Agency's land.

See the work site area in red near QEII Drive on the map below.



A timber piling rig in action



For more information or if you have further queries for the CNC Alliance team, please get in touch with us.

Free phone: 0800 262 200  
Email: [info@cncalliance.co.nz](mailto:info@cncalliance.co.nz)

# Christchurch Northern Corridor

December 2016

## TEST PILES NEAR QEII DRIVE

During the build of the new Christchurch Northern Corridor we will be using timber piles to support the many structures on the motorway.

To test our method and to see how well the piles are hammered into the current ground conditions we will test the piling at a location within the motorway alignment.

## Construction Impact

Work starts early December and will be completed before Christmas. There will be a 50tonne crane with a pile hammer on site to install eight piles.

The timber piles will go 12 metres into the ground. We are monitoring the vibrations and the noise levels during the piling works.

Part of the test is to check how long it will take to install one pile.

Nearby residents may experience ground-borne noise and vibrations during the

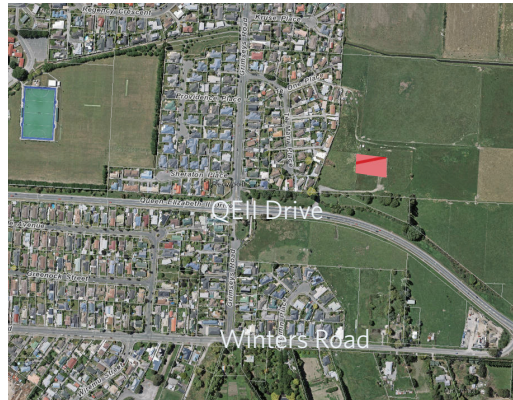
installation of piles.

The level of vibration is well below the level that may cause damage to homes or properties.

## PILING LOCATIONS

The location for the test piling is within the alignment of the project on NZ Transport Agency's land.

See the work site area in red near QEII Drive on the map below.



A timber piling rig in action



For more information or if you have further queries for the CNC Alliance team, please get in touch with us.

Free phone: 0800 262 200  
Email: [info@cncalliance.co.nz](mailto:info@cncalliance.co.nz)