

Welcome to the Construction Update for the Baypark to Bayfair Link (Bay Link) project.

CPB Contractors is carrying out the design and construction for Bay Link. The monthly updates provide an overview of what's happened and what's coming up for the project.

Significant changes near Bayfair roundabout

Traffic lights will soon be in operation on State Highway 2 Maunganui Road, north of the Bayfair roundabout.

The temporary signalised crossing, being carried out in two stages, includes installing traffic lights to enable pedestrians and cyclists to cross between Bayfair Shopping Centre and Matapihi Road while construction continues in the centre of the road.

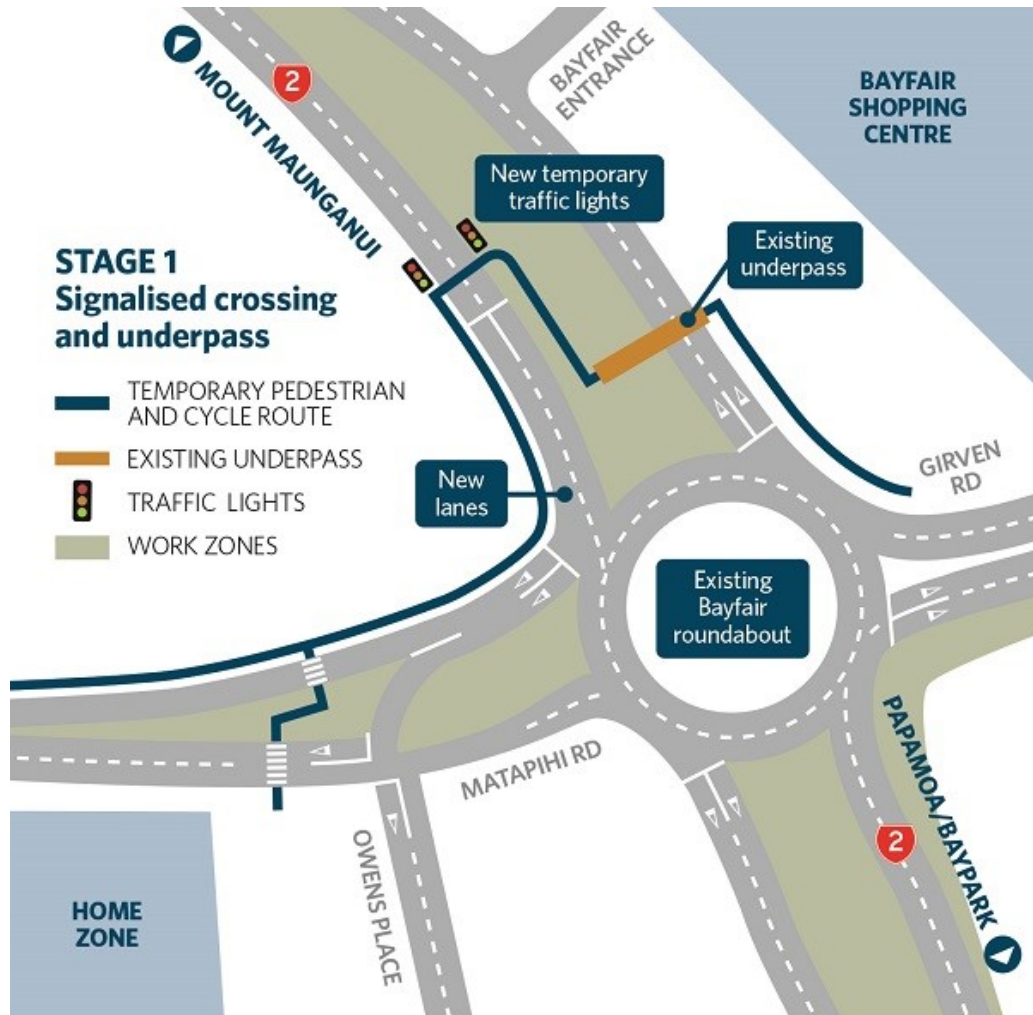
This is a considerable change and road users are urged to take extra care while adjusting to the new layout.

The new temporary layout includes a raised safety platform to slow motorists down and two sets of traffic lights on either side of the state highway.

As part of the first stage, traffic lights on the new city-bound lanes, will be operating from 12 February. Pedestrians and cyclists will use a combination of the traffic lights and the existing underpass (which remains open) to cross SH2 Maunganui Road.

Escorts will be in place to assist people at the crossing points 24/7. The escorts are an additional safety measure to assist users while they become familiar with the changes.

The temporary speed limit of 30km/h will remain in place through the area for the safety of pedestrians, road users and our construction workers.



Upcoming road closures - SH29A and SH2

At the eastern end of the Bay Link project, stone column work continues to prepare the ground to take the weight of the on and off ramps for the flyover. To allow for this, SH29A between Baypark and Te Maunga roundabouts will be closed from **8pm Friday 14 February until 5am Monday 17 February**.

Detours will be in place along Truman Lane, Mangatawa Link Road and Sandhurst Drive/Mangatawa Interchange during these times.



In addition to this, the SH2 city-bound lanes between the Sandhurst Drive off-ramp and Te Maunga roundabout will be closed overnight only from **8pm to 5am Monday 17 February, Tuesday 18 February, Wednesday 19 February and Thursday 20 February** (finishing Friday morning). This is to enable an existing sewer pipe under the road to be replaced and additional stone column work.

During these hours, city-bound motorists are advised to take the Sandhurst Drive exit from the Tauranga Eastern Link, turn left at the traffic lights and follow the detour along Mangatawa Link Road and Truman Lane before turning right at the Baypark roundabout to continue along SH2. A single lane closure will be in place for Papamoa-bound traffic.

Where possible, please use alternative routes or plan your travel around these closures. This work is weather dependent and if delayed will be carried out on the next suitable weekend(s) or night(s).

What to expect during February

This month, the biggest change on the Bay Link project will be the introduction of the temporary signalised crossing on SH2 Maunganui Road. Alongside this, you can expect to see some other changes across the project site:

- Between Concord Avenue and the Bayfair roundabout, the right Papamoa-bound lane will be moved next to the left lane. The work zone will then be shifted to the centre. Motorists using the Bayfair Shopping Centre entrances should continue to use the left lane on Maunganui Road to access the car park.
- The work zone on Matapihi Road between the railway lines and Golf 360's entrance will be removed and the new footpath will be opened to pedestrians and cyclists.
- The Bayfair roundabout will increase in size to enable work to be carried out in the middle of the roundabout. Road users are asked to take care and keep to the temporary speed limits when navigating the roundabout.



For more information

Phone 0508 222 4636
 Email Baypark2Bayfair@nzta.govt.nz
 Website www.nzta.govt.nz/baylink
 Facebook www.facebook.com/NZTAWaikatoBoP
 Twitter www.twitter.com/NZTAWaibop

