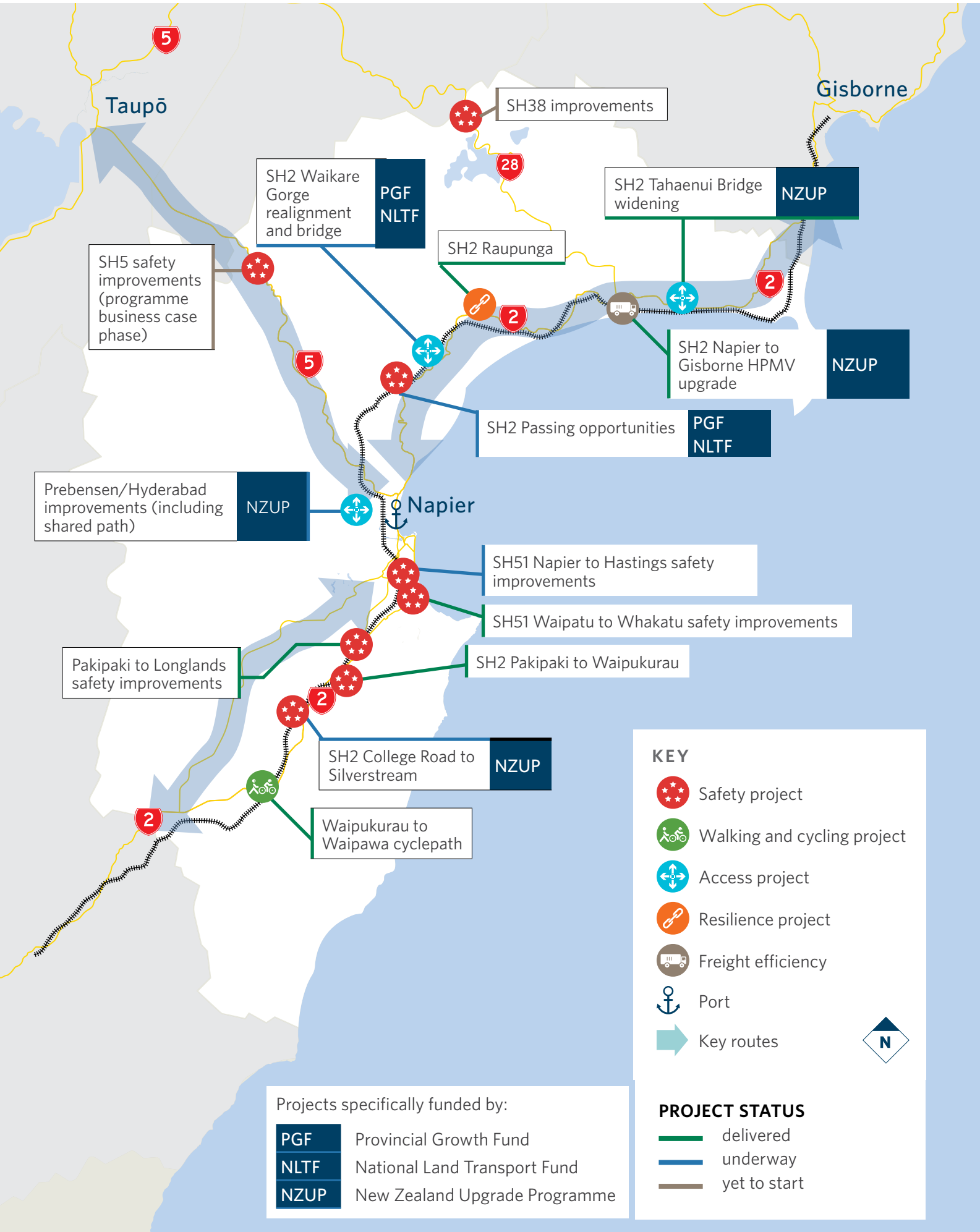


Te Matau-a-Māui Hawke's Bay

key projects 2021-24



SH5 safety improvements (programme business case phase)

SH2 Waikare Gorge realignment and bridge
PGF NLTF

SH38 improvements

SH2 Tahaenui Bridge widening
NZUP

SH2 Raupunga

SH2 Napier to Gisborne HPMV upgrade
NZUP

SH2 Passing opportunities
PGF NLTF

Prebensen/Hyderabad improvements (including shared path)
NZUP

SH51 Napier to Hastings safety improvements

SH51 Waipatu to Whakatu safety improvements

Pakipaki to Longlands safety improvements

SH2 Pakipaki to Waipukurau

SH2 College Road to Silverstream
NZUP

Waipukurau to Waipawa cyclepath

KEY

- Safety project
- Walking and cycling project
- Access project
- Resilience project
- Freight efficiency
- Port
- Key routes

Projects specifically funded by:

- PGF** Provincial Growth Fund
- NLTF** National Land Transport Fund
- NZUP** New Zealand Upgrade Programme

PROJECT STATUS

- delivered
- underway
- yet to start

