

3rd September 2024

For the attention of the Director of Land Transport

Variation Request

Selwyn District Council interim speed management plan
Certified by the Director of Land Transport on 24 May 2024

Selwyn District Council (SDC) respectfully seek a variation to its existing Interim Speed Management Plan (ISMP).

Background

Selwyn District Council conducted district wide public consultation on a Full Speed Management Plan (FSMP), covering our 10-year vision, objectives, and principles, this closed on the 10th of November 2023.

Following communication from the Minister of Transport on the 12th of December 2023, progress on the implementation of that FSMP was placed on hold by Council.

Through necessity SDC completed an Interim Speed Management Plan (ISMP), primarily focused on variable speed limits around schools and other network critical areas. The submitted ISMP included considerations raised during the FSMP consultation.

On the 24th of May 2024 our Interim Speed Management plan was certified by the Director of Land Transport.

During implementation of the ISMP some minor alterations were identified, which will ensure efficiency and safety with the operation of the variable speed limits.

Considerations

These alterations will have limited additional impact on vehicular road users in the community, however, will provide significant safety improvements and consistency for other road users.

Consultation on the FSMP confirmed support for lower speeds around schools, with additional support for variable speed limits. SDC has conducted further conversations with selected stakeholders, where minor changes to the original plans were recommended.

Specific consultation with Te Taumutu Runanga was conducted during the above consultation. These minor alterations are deemed an operational amendment to the previously consulted document, therefore no additional consultation with local iwi has been undertaken. Safety benefits from these minor changes allows for safe navigation of students on the primary egress to and from schools, and aids in the rational understanding of the affected roads for drivers.

Road Name	Road Position (RP) (metres)	School	Existing Speed Limit (km/h)	Proposed Speed Limit (km/h)	Reason for change
Courtney Road, Kirwee	12855m to 13155m	Kirwee Model School	50km/h	Variable 30km/h	We are making some adjustments to the areas covered by the variable speed limits to better reflect the journeys that students take to get to school
Greendale Road, Darfield	0m to 260m	Darfield school Darfield High School	50km/h	Variable 30km/h	We are making some adjustments to the areas covered by the variable speed limits to better reflect the journeys that students take to get to school
Cardale Street, Darfield	810m to 990m	Darfield school Darfield High School	50km/h	Variable 30km/h	We are making some adjustments to the areas covered by the variable speed limits to better reflect the journeys that students take to get to school

Kirwee Model School

Consultation of the FSMP included permanent 30km/h on School Lane and Walter Place, there was no recommended speed reduction on Courtney Road.

Submissions received during consultation indicated that the local community desired some form of speed reduction to occur on Courtney Road, due to speeding vehicles.

SDC took these submissions into account, had additional conversations with the school and its community to gauge the need for speed reductions during pick up and drop off times on Courtney Road.

The resulting conversations indicated community support of a reduced speed limit for the safety of its students and wider community, therefore the variable 30km/h reduction was extended onto Courtney Road, Kirwee.

This speed reduction is during pick up and drop off times only and is in place to assist with children to safely navigate to and from school.

Variation Request – Include Courtney Road, Kirwee in variable 30km/h speed limit reduction.



Requested variation to original ISMP, electronic 30km/h signs on Courtney Road to encompass the side roads.



Certified original ISMP, static 30km/h on side roads only.



Consulted FSMP, permanent 30km/h

Darfield Schools

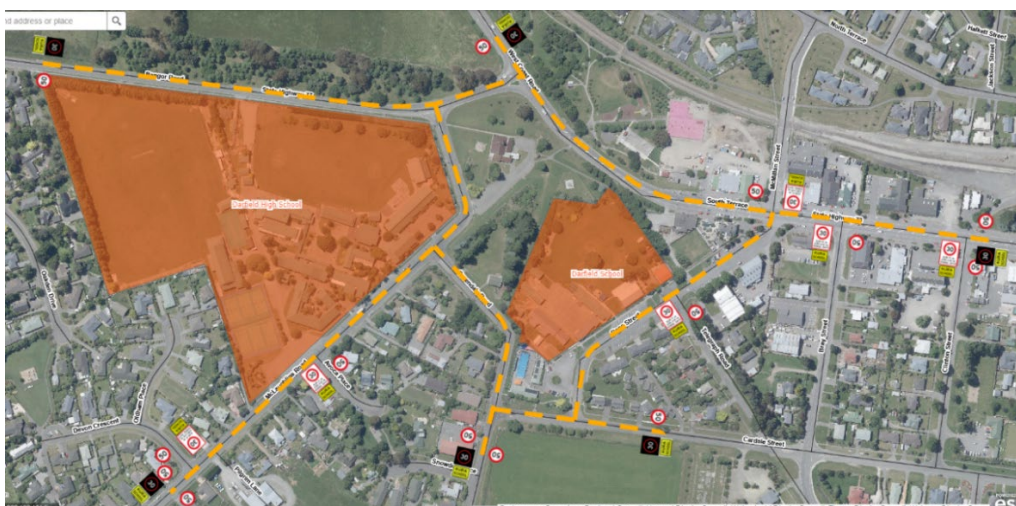
Greendale Road, and Cardale Street, Darfield were identified as high-volume roads for students to navigate to and from both Darfield schools.

These roads were included in the FSMP and consulted on for permanent 30km/h, this received support for speed reductions around the schools.

They were excluded from the ISMP in an effort to reduce the roads to school frontages, however Greendale Road is a primary connection used by students between schools.

Inclusion of Greendale Road and Cardale Street allows for a consistent safety environment encompassing both schools, it also ensures drivers can easily understand the roads covered by the variable speed reduction.

Variation Request – Include Greendale Road and Cardale Street, Darfield in variable 30km/h speed limit reduction.



Requested variation to original ISMP, electronic 30km/h on Greendale Road and Cardale Street, Darfield.



Certified original ISMP has no coverage of Greendale Road or Cardale Street, Darfield.



Consulted FSMP, permanent 30km/h.

The above information is submitted for review and certification at your earliest opportunity.

Respectfully for your consideration,

Road Safety Advisor
Selwyn District Council