

# Te Taihu Top of the South: Nelson, Tasman and Marlborough

Population growth and urban development are putting pressure on the Nelson and Tasman urban transport network.



Our focus is on delivering better transport choices in Nelson and Richmond with improvements to both cycling and the public transport network to support intensification.

A key piece of this work is the Nelson Future Access project detailed business case. Broadly, this work looks at the Rocks Road and Waimea Road corridors and the ability to get people and freight in and out of Nelson safely and efficiently. The endorsed business case also looks to improve the land transport links with Nelson Port, ensure safer and more accessible facilities for people choosing to walk or cycle, and review public transport improvements to maximise the transport network's efficiency.

Work continues on managing growth around Richmond and Stoke to use the existing network more efficiently, through the endorsed Richmond programme business case.

## Nelson

The Nelson City Council is focused on improving its public transport service, with a new Stoke loop route to improve accessibility within the Stoke area and connections to the growth area in Saxton. It is also planning to introduce electronic bus ticketing to make it easier for people to use the service.

The Nelson Future Access project considers opportunities to create better transport links between Nelson Port and Annesbrook for all transport modes, including the Rocks Road shared walking and cycling path.

Investment in public transport in Nelson and Richmond will improve services both within and between the two centres, while extending the Nelson cycleway between Annesbrook and Tāhunanui will provide better access for those who cycle.

## 2021 Regional deaths and serious injuries statistics



## Marlborough

The purchase of new ferries by KiwiRail and subsequent Picton Ferry Terminal redevelopment brings opportunities to better connect the ferry precinct with the town, rethinking transport networks and taking advantage of new investment in KiwiRail's Cook Strait operations. We're a partner in this project, working with KiwiRail, Te Ātiawa o te Waka ā Māui Trust, Ports of Marlborough and Marlborough District Council.

## Tasman

Managing growth and expansion from urban development, improving safety and developing alternative transport choices, particularly cycling and public transport facilities, are the focus for the Tasman district.

## In the last 12 months

### Nelson

- The **Nelson Future Access** project looked at ways to develop a multimodal transport system, a thriving CBD, a world-class waterfront and a safer, more accessible and resilient transport system. Community and stakeholder engagement has been completed.

### Marlborough

- Community and stakeholder engagement on **Picton Port Access** and redevelopment got underway, in conjunction with KiwiRail, Marlborough District Council and Ports of Marlborough.
- A **major storm event** damaged more than 460km of roads throughout Marlborough in July 2021. During the last 12 months, teams have been repairing damage and getting roads reopened. All 350km of roads that were unpassable have reopened to at least controlled access and 80% of the 1600 faults have been repaired.
- A subsequent major storm event in August 2022 severely damaged SH6, SH63 and caused extensive further damage to roads across the Marlborough Sounds, prompting the Council to undertake a review of how to manage resilience and levels of service on the local road network.
- A **new roundabout at the intersection of SH6/62** has been completed, making this intersection safer for everyone travelling around or through Marlborough.

### Tasman

- Engagement was completed and endorsement provided by Waka Kotahi and Tasman District Council for the **Richmond transport programme business case**, which addresses Richmond transport needs over the next 30 years. It focuses on making Richmond a safer and more reliable place to travel around by offering everyone improved transport choices.

- Emergency repair works on **SH60 Takaka Hill**, following damage caused by Cyclone Gita in February 2018, were completed. The road is now open to two lanes.
- Safer speed limits were implemented on **SH6 between Hope to Wakefield** and for the town centre on SH60 High Street in Motueka.
- As part of the COVID-19 Response and Recovery Fund, traffic and pedestrian signals and a new roundabout were completed on **SH60 in Motueka**.
- 1.1km of median barrier were installed on **SH6 Richmond Deviation** to help prevent head-on crashes along this stretch of road.

## Underway or about to start

- Investigations are underway for **two roundabouts between Woodbourne and Springlands on SH6**.
- SH6 will be closed between Rai Valley and Hira from 1 November to 18 December to repair five sites significantly damaged in August 2022.

## Regional development

Keeping the land transport system well-maintained is a large part of the annual investment from the National Land Transport Fund in the Top of the South. This work is to ensure the transport system is safe, more reliable and easier to use, helping keep communities connected while supporting economic growth.

The Picton Ferry Terminal redevelopment project represents a transformational investment in critical infrastructure that is expected to generate significant tourism, economic and environmental benefits.

The Nelson Future Access project considered how to get people and freight, safely and efficiently in and out of Nelson. It will also look to improve land transport links with Nelson Port, ensure safer and more accessible walking and cycling facilities, and review public transport.

We continue to work with Nelson City and Tasman District councils to identify how to use the transport network more efficiently, in response to concerns about increasing congestion around growth areas, such as Richmond. This is part of the focus of the endorsed Richmond transport programme business case.

## Environment

Climate change is affecting the resilience of the region's land transport system as a freight corridor and in providing reliable connections to communities.

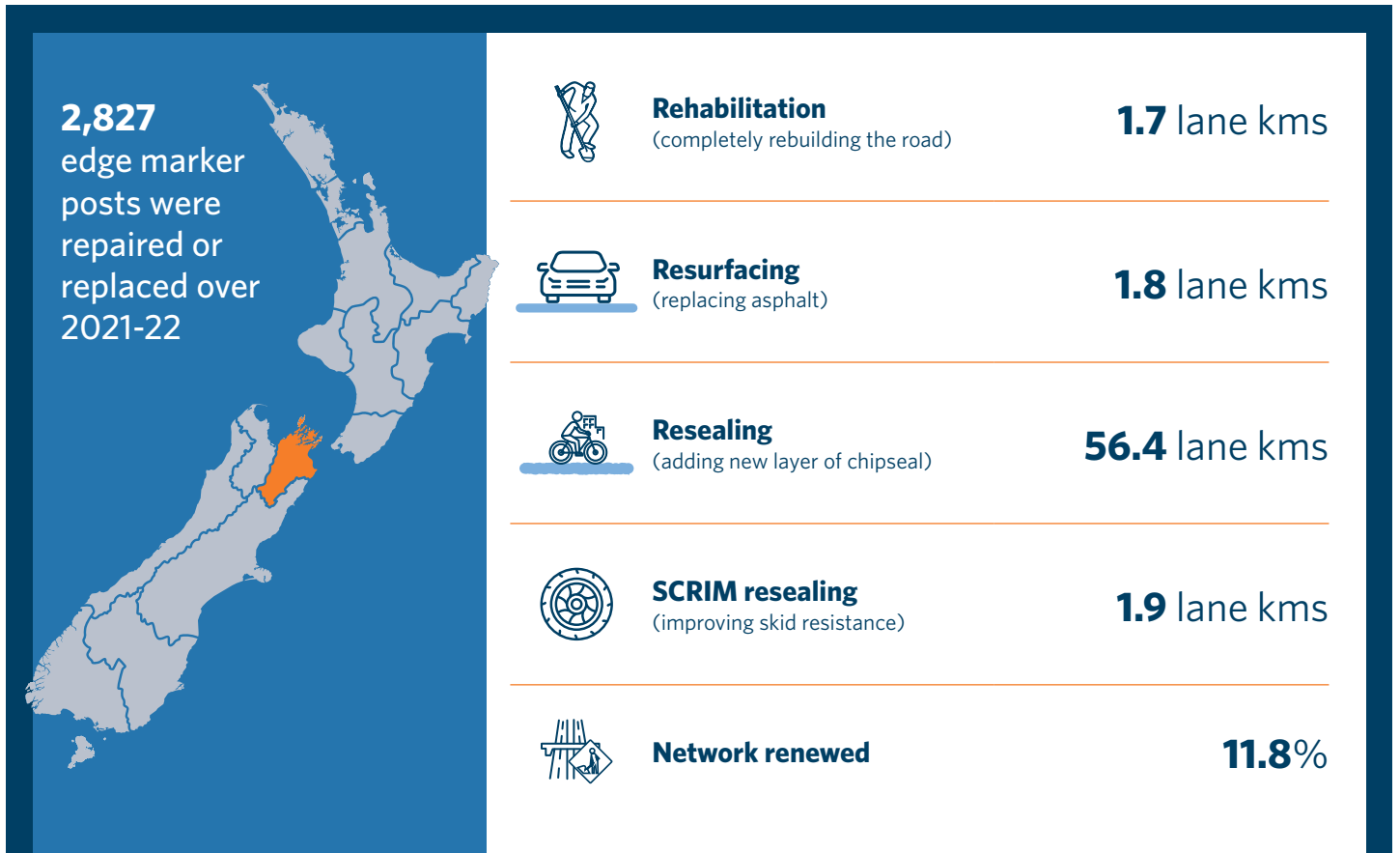
Continued investment in walking, cycling and public transport across the Top of the South is helping to provide alternative travel options and help improve environmental outcomes.

# Wairau Marlborough

**Road renewal activity** 2021/22: 59.9 lane km 2022/23: 66.8 lane km (planned)



## State highway maintenance summary Marlborough 2021/22



Local road maintenance spend  
(Councils + Waka Kotahi):

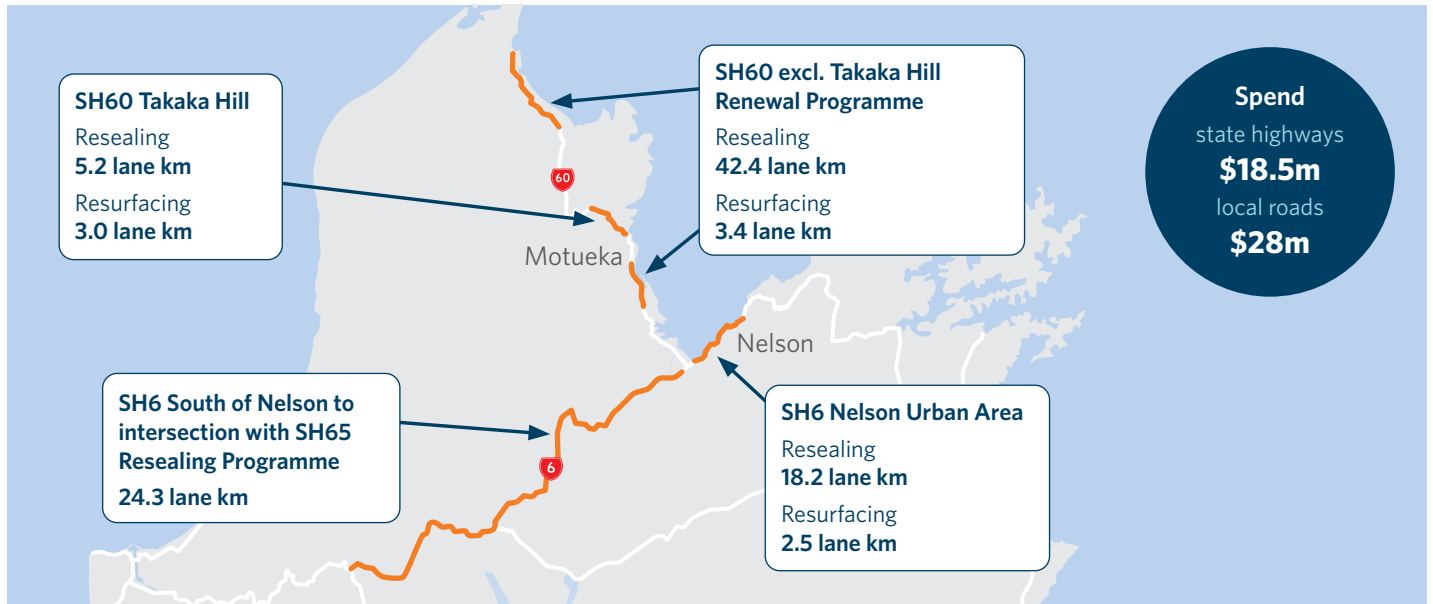
**\$49,498,469**

State highway maintenance spend  
(Waka Kotahi):

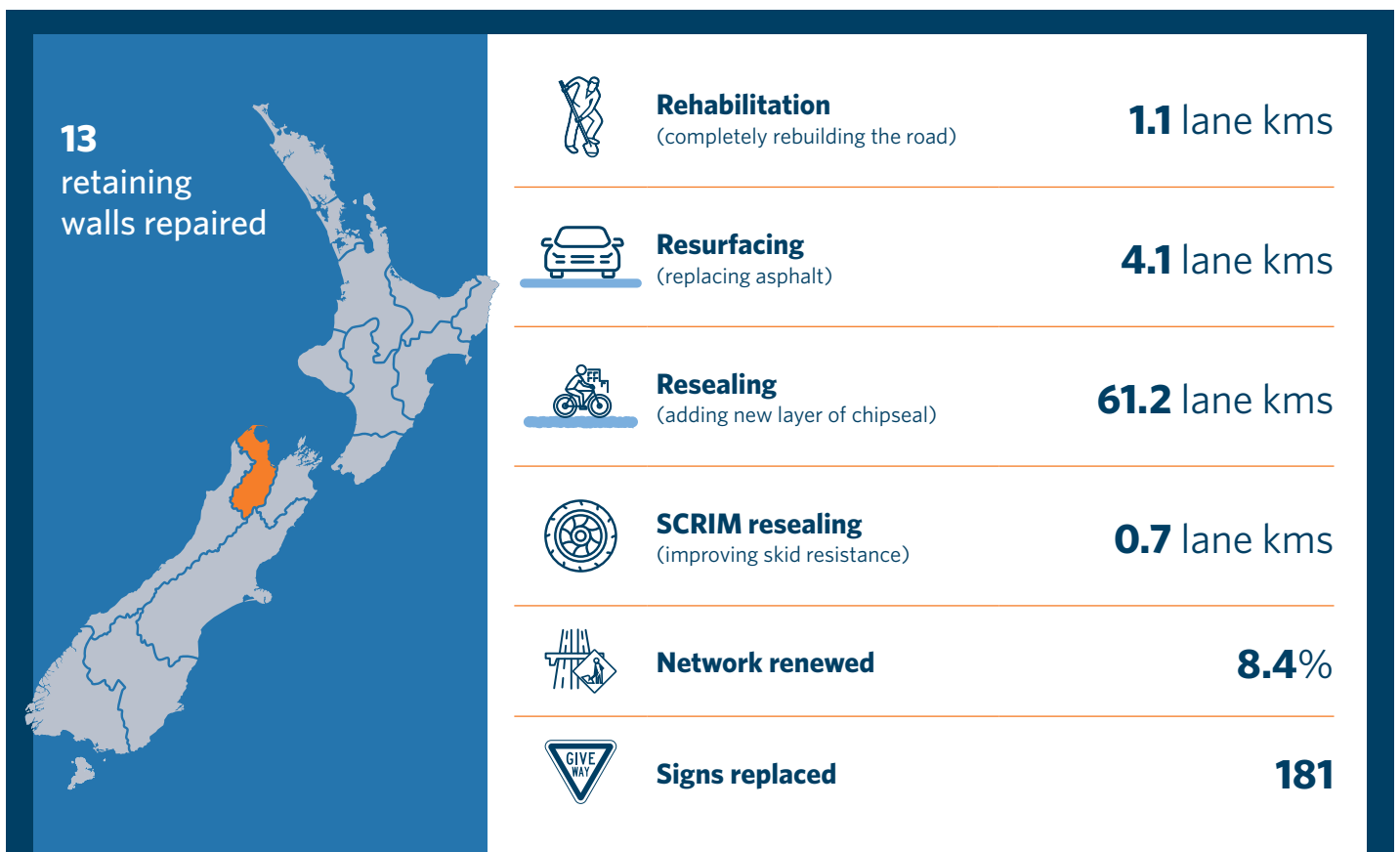
**\$20,123,233**

# Whakatū/Te Tai o Aorere Nelson/Tasman

**Road renewal activity** 2021/22: 66.4 lane km 2022/23: 108.1 lane km (planned)



## State highway maintenance summary Nelson/Tasman 2021/22



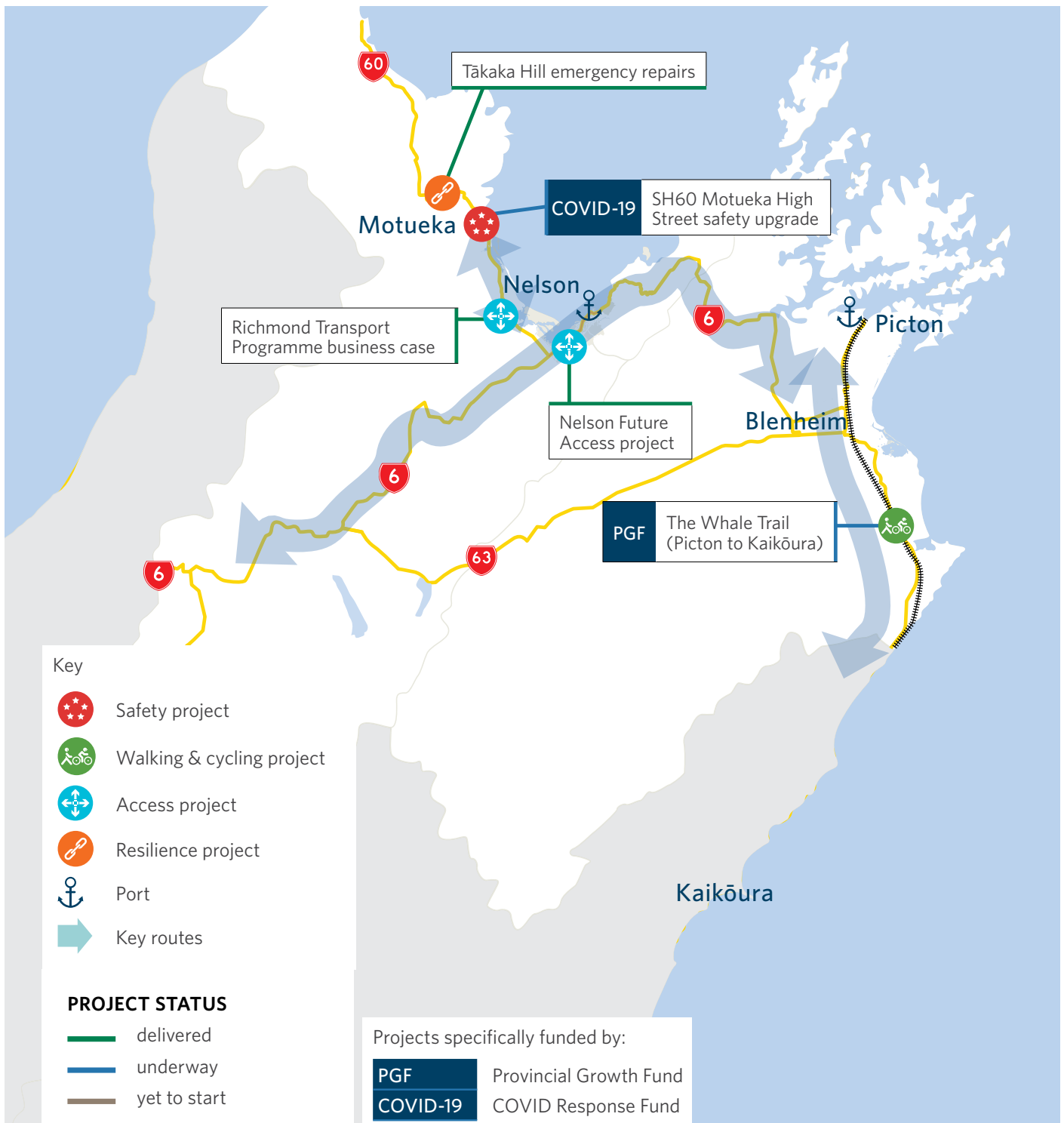
Local road maintenance spend  
 (Councils + Waka Kotahi):  
**\$29,284,169**

State highway maintenance spend  
 (Waka Kotahi):  
**\$27,462,403**

## Funding overview

	Investment in 2012-15 NLTP	Investment in 2015-18 NLTP	Investment in 2018-21 NLTP	Forecast investment in 2021-24 NLTP
<b>Total</b>	\$214 million	\$341 million	\$314 million	\$390 million
<b>Maintenance &amp; operations</b>	\$172 million	\$218 million	\$219 million	\$321 million
<b>Public transport</b>	\$3.1 million	\$4.5 million	\$7.5 million	\$14 million
<b>Walking &amp; cycling</b>	\$4.2 million	\$1.4 million	\$4.7 million	\$11 million
<b>Road to Zero (safety)</b>				\$21 million
<b>Network improvements</b>	\$313 million	\$109 million	\$71 million	\$16 million

## Overview map





**Te Kāwanatanga o Aotearoa**  
New Zealand Government