

Ōtākou/Murihiku Otago/Southland

A safe, well-connected and resilient land transport system that gets goods to market and supports post COVID-19 economic growth in Otago and Southland is a major investment focus of the 2021-24 NLTP.



Achieving greater value for money is a priority, along with creating a safe system that reduces harm to both people and the environment.

In Otago, this NLTP continues to focus on the investment being made on developing a safer and more resilient land transport system that supports regional growth and provides appropriate levels of service.

Prioritised investments in Dunedin and Queenstown target improved access to public transport, walking and cycling and take better account of the place and movement functions of urban streets.

In Southland, the emphasis remains on improving the safety and resilience of our network to help drive economic growth, maintain key road connections and ensure the right levels of service for everyone who uses our transport system.

Together with our partners, we're working to ensure the regions' roads are safer, more resilient and well-maintained to provide the access that communities rely on, and that are critical to the farming, forestry and tourism sectors that underpin both the Otago and Southland economies.

During the 2021-24 NLTP period, \$678 million is being invested in road maintenance and renewals in Otago and Southland.

2021 Regional deaths and serious injuries statistics

216

Total

deaths and serious injuries

\$

Social cost of
\$471.2M

74

deaths and serious injuries of occupants in 1 or 2-star rated vehicles

67

Aged 16-24

deaths and serious injuries

14

Pedestrian

deaths and serious injuries

11

Cyclist

deaths and serious injuries

22

Motorcyclist

deaths and serious injuries

In the last 12 months

Dunedin

- Continued construction of the \$42.5 million **SH88 Dunedin to Port Chalmers improvements** project, building the final 5km section of the SH88 shared cycling/walking path between St Leonards and Port Chalmers.
- Rolled out the Otago Regional Council's **real-time tracking mobile phone app** showing bus locations and expected arrival times.
- The completion of the \$15 million project to replace **Dunedin's street lighting with LEDs** to improve safety and reduce energy use and ongoing maintenance costs.
- The opening of the \$22 million 4km **Company Bay to Broad Bay shared walking and cycling path** – an important link on the Otago Peninsula Connection.

Otago

- Good progress was made on building a single-lane roundabout to improve safety at the high-risk **SH6/SH8B intersection in Cromwell**, one of several highway projects funded by the New Zealand Upgrade Programme regional package. There have been 23 crashes at the intersection in the last 10 years.
- Work started on the new \$28 million two-lane **Beaumont Bridge** on SH8 over the Clutha River to replace a 138-year-old single-lane bridge. This new bridge will provide a more resilient highway link between Dunedin and Central Otago.
- Major rock placement work costing \$4 million was completed at Katiki Beach between Palmerston and Ōamaru to provide greater protection against **coastal erosion on SH1**.
- Completion of the new \$3.4 million single-lane **Hinahina Bridge** across the Catlins River in South Otago provides greater safety and resilience on an important local road connection.
- Detailed design work was finished for safety improvements on a 14km section **SH1 between Herbert and Hampden**, in North Otago.
- Consents were lodged and design work started to lift the highway one-metre to lower the flood risk on a vulnerable 200-metre section of SH1 through the **Kakanui River floodplain**. This \$2m project is funded from the New Zealand Upgrade Programme.

Queenstown

Waka Kotahi is taking a multi-agency approach to managing transport opportunities and growth challenges in Queenstown Lakes District, reflecting the area's rapid expansion not only as a tourist hotspot but as a growing sub-region.

- A \$6.4 million seal extension was completed on **Ballantyne Road near Wanaka** to provide greater safety for cyclists and pedestrians.
- We entered an **alliance** with Queenstown Lakes District Council – Kā Huanui a Tahūna – to deliver a number of cornerstone projects in Wakatipu including New Zealand Upgrade Programme and active travel projects.
- Design and planning for the **New Zealand Upgrade Programme** is underway. The programme will deliver a range of public transport and walking and cycling improvements on SH6 and SH6A.
- **Queenstown Active Travel Network** is in the detailed design phase. It will provide an integrated network of trails that connect to public transport. This is being delivered by both Waka Kotahi and Queenstown Lakes District Council.

Southland

- Work started on \$3 million of safety improvements inside the **Homer Tunnel** that will see even better monitoring of tunnel incidents and traffic on the eastern side of the tunnel. This work forms part of a Crown Infrastructure Partners (CIP)-funded \$25m safety upgrade of the 1.2km Homer Tunnel.
- A new \$5m roundabout was completed at the busy **SH1/Elles Road intersection**, south of Invercargill.
- A 16km, off-highway shared walking and cycling path from **Bluff to Awarua**, was opened, providing a safe alternative to SH1 for cycling between Invercargill and Bluff. It also forms the final section of the 3,000km Te Araroa trail connecting Cape Reinga to Bluff.
- A **new public transport timetable** was introduced in Invercargill to reduce bus wait times and improve the frequency of services and connections to other services.
- Work was completed on the \$9 million flood repair project on the **Milford Road** caused by a massive storm in 2020 that saw numerous large retaining walls destroyed by floodwaters.

Underway or about to start

Dunedin

- Continued planning and delivery of **Connecting Dunedin Transport partner programmes**, including upgrading the Harbour Arterial, SH1 and SH88, improving accessibility in the central city and accelerating the development of Dunedin's cycle network.
- Design work for the last stages of **Dunedin's Peninsula Connection** project, a 25km shared walking and cycling path between Dunedin and the Otago Harbour entrance. The project includes several seawalls to protect the main road between Dunedin and the Otago Peninsula from climate change-related sea level rises.
- Completion in early 2023 of the \$42.5 million **SH88 Dunedin to Port Chalmers safety improvements** project, which includes the final 5km section of the SH88 shared cycling/walking path.
- Further investment is planned to build on **public transport patronage** growth in Dunedin and likely to include more bus services from the south of the city and investigation of a park and ride facility.
- The opening of the **Inner Harbour Links cycle path** which will make it easier and safer for people to cycle between the Dunedin CBD and upper Otago Harbour.
- Detailed design of a joint Connecting Dunedin partners **Albany Street Connection**. This will improve access for people riding bikes and walking to Dunedin's tertiary sector and CBD. Construction of a two-way cycleway is planned to begin in November 2022.

Otago

- Ongoing work on the new \$28 million two-lane **Beaumont Bridge** on SH8 over the Clutha River – scheduled to open in late 2023.
- Construction is expected to begin on the \$2 million project to lower the flood risk on a vulnerable 200-metre section of SH1 through the **Kakanui River floodplain**.
- Complete detailed design work for safety improvements on a 26km section **SH1 between Hampden and Palmerston** in North Otago.
- Opening of the \$8 million single-lane roundabout to improve safety at the **SH6/SH8B intersection in Cromwell** funded by New Zealand Upgrade Programme regional package.

Queenstown

- As part of the Road to Zero Safe Infrastructure Programme (SIP), we're proposing safety improvements to the **SH6/SH84 intersection at Wanaka**. This project comprises a 40m diameter, single-lane roundabout. With significant growth in traffic in this area, along with increased safety risks at the intersection, this crucial safety project will help reduce serious crashes.
- Detailed design for completing Queenstown Lakes District Council's active travel routes and more detailed design work on the Shotover to Frankton and Jack's Point to Frankton routes. **A new cycle connection** is also planned at Nevis Bluff to secure the Great Ride link between Cromwell and Queenstown.
- Work on a detailed business case for making improvements to **Queenstown's public transport services**, including the quality of service, public transport infrastructure, asset ownership, system management, labour supply and funding. For Queenstown, buses will increasingly become an essential part of the transport picture – to achieve these goals it is critical that buses can move efficiently and reliably on roads.
- Queenstown's economy will be supported through an ongoing rock fall protection management programme at **Nevis Bluff on SH6 between Queenstown and Cromwell** to reduce the risk of closure of this highway which is a key freight, commuter and tourism corridor.

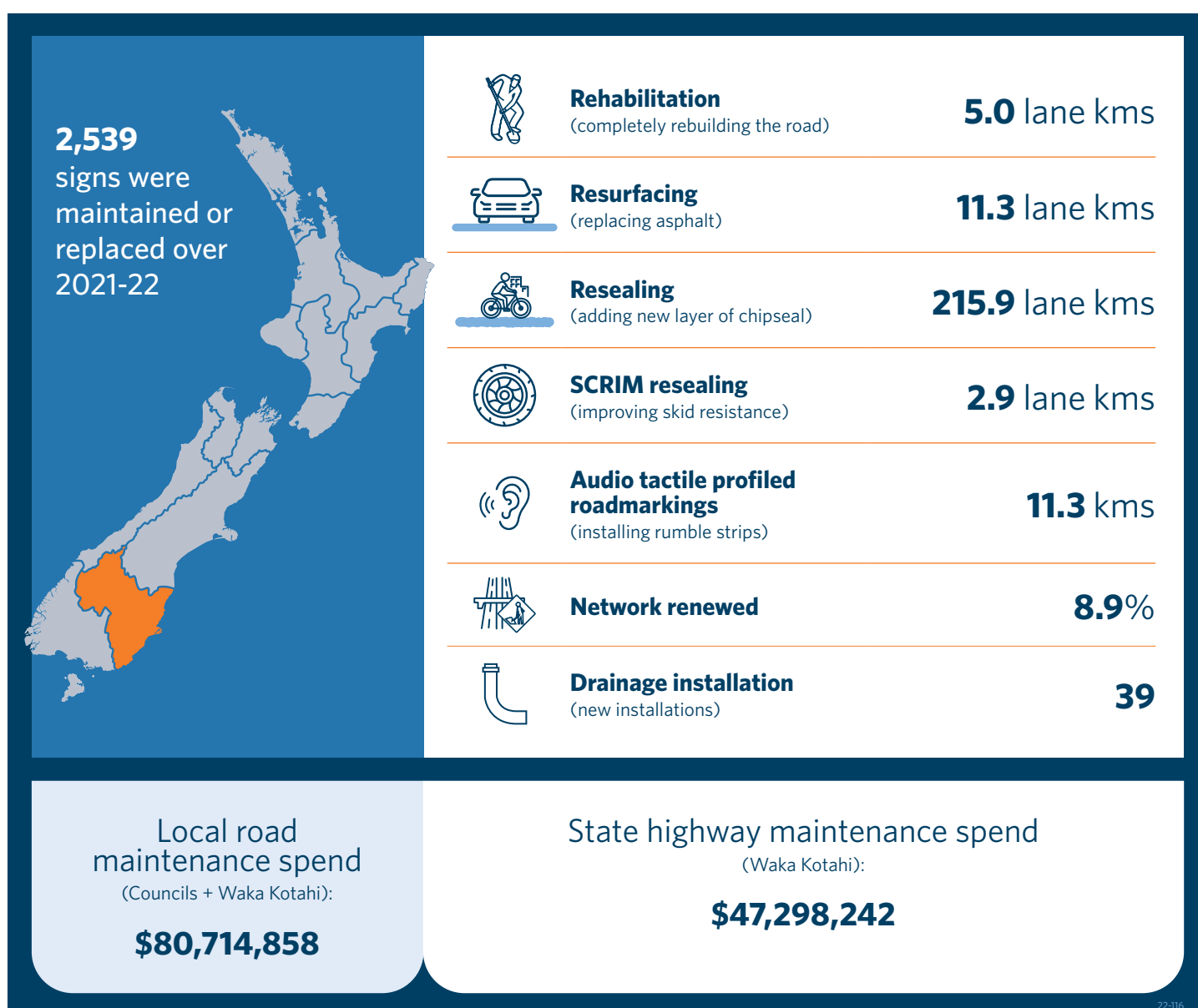
Southland

- Applications have been lodged for concessions and consents for \$22 million in safety improvements on the eastern side of the **Homer Tunnel**, including a new rock fall shelter, and plant and equipment room.
- Design work is underway on a new intersection to improve safety at the **SH93/SH1 intersection in Maitai**.

Funding overview

	Investment in 2012-15 NLTP	Investment in 2015-18 NLTP	Investment in 2018-21 NLTP	Forecast investment in 2021-24 NLTP
Total	\$564 million	\$649 million	\$928 million	\$1.1 billion
Maintenance & operations	\$448 million	\$448 million	\$578 million	\$678 million
Public transport	\$29 million	\$39 million	\$68 million	\$91 million
Walking & cycling	\$4.7 million	\$5.6 million	\$30 million	\$60 million
Road to Zero (safety)				\$70 million
Network improvements	\$72 million	\$119 million	\$226 million	\$87 million

State highway maintenance summary Otago 2021/22



State highway maintenance summary Southland 2021/22

6,103
winter
maintenance
jobs were
completed
over 2021-22



Rehabilitation
(completely rebuilding the road)

6.4 lane kms



Resurfacing
(replacing asphalt)

4.2 lane kms



Resealing
(adding new layer of chipseal)

118.4 lane kms



SCRIM resealing
(improving skid resistance)

2.9 lane kms



**Audio tactile profiled
roadmarkings**
(installing rumble strips)

38.2 kms



Network renewed

8.1%

Local road
maintenance spend
(Councils + Waka Kotahi):

\$43,572,346

State highway maintenance spend
(Waka Kotahi):

\$30,988,529

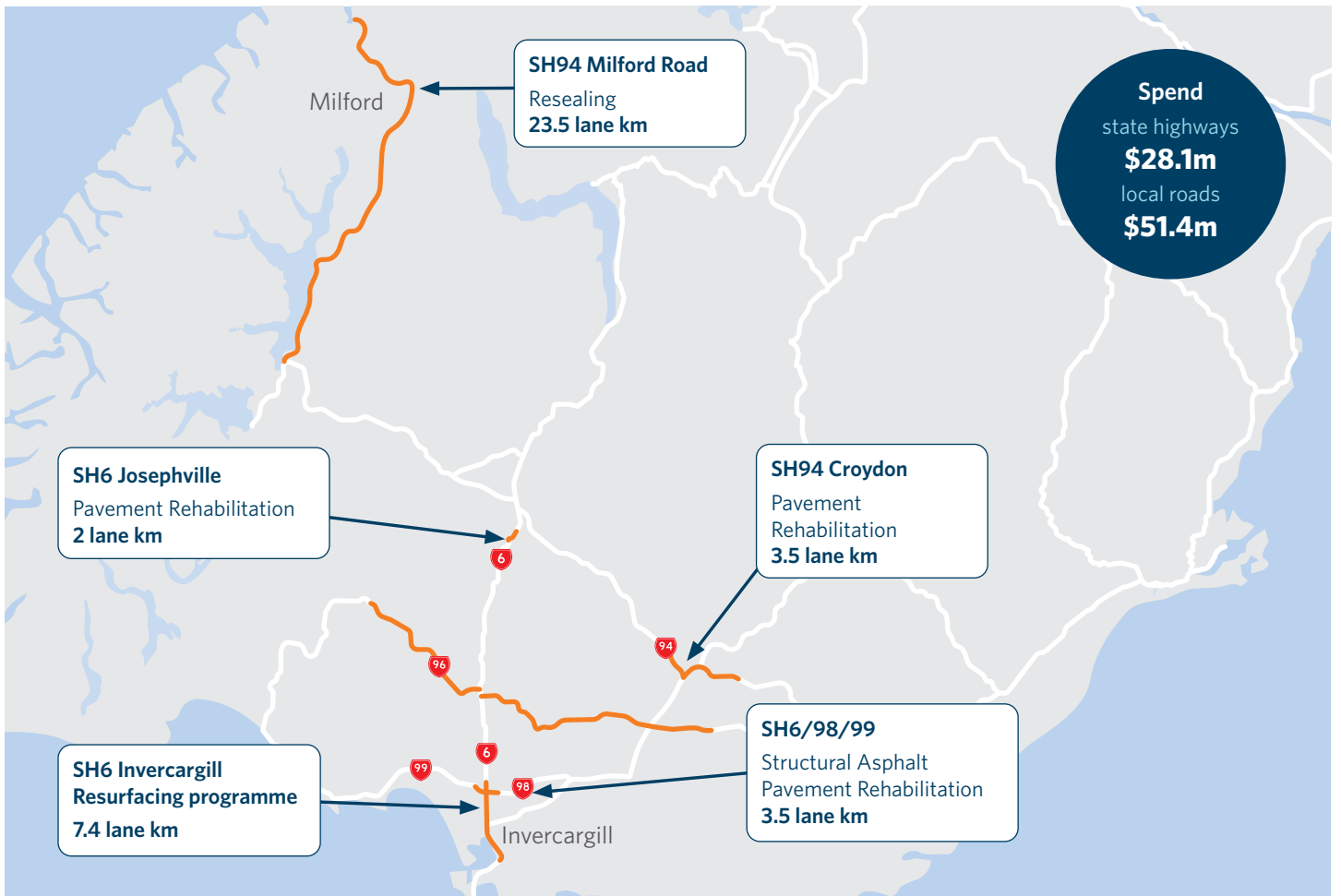
Ōtākou Otago

Road renewal activity 2021/22: 225.6 lane km 2022/23: 293.2 lane km (planned)

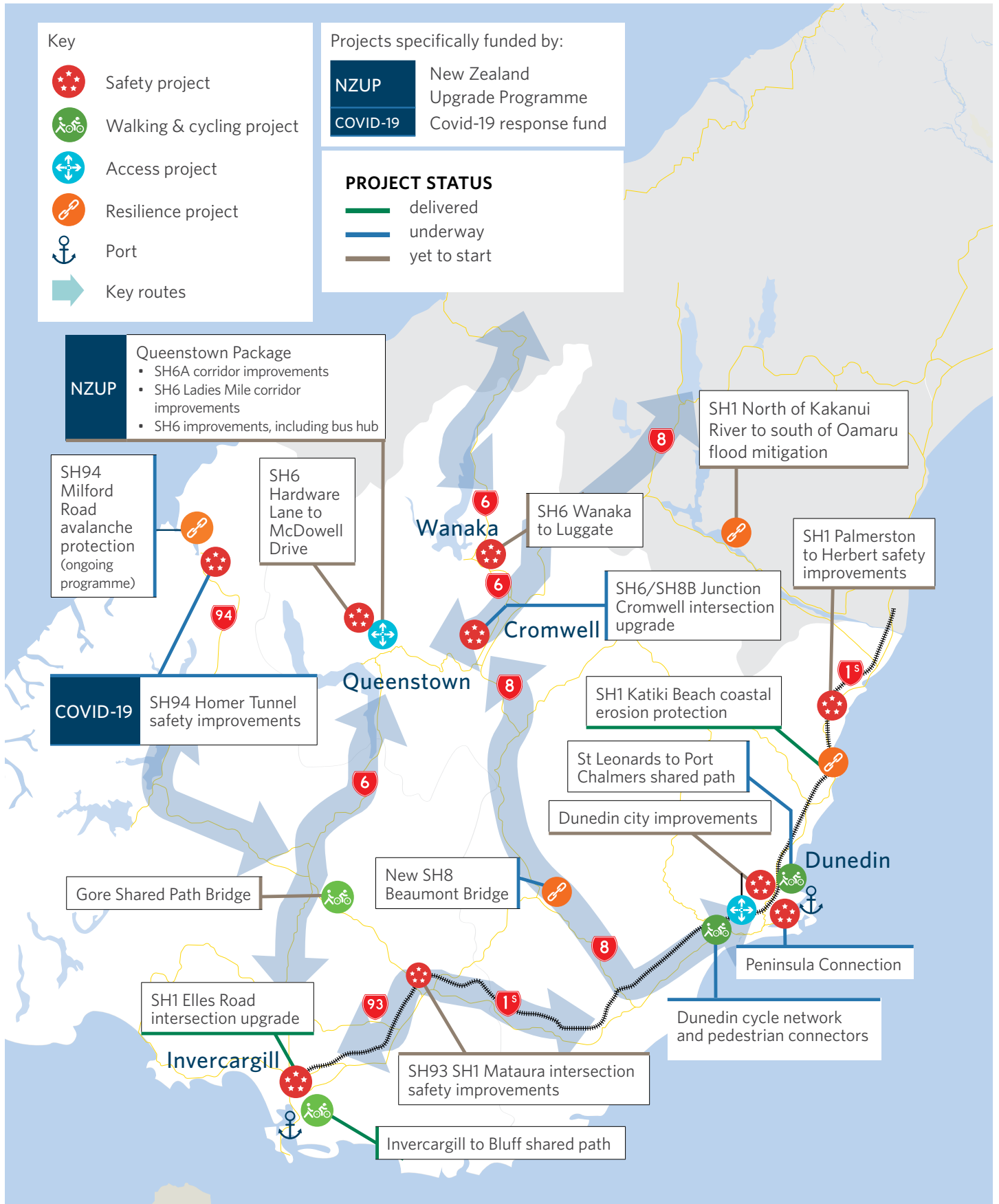


Murihiku Southland

Road renewal activity 2021/22: 129 lane km 2022/23: 115.8 lane km (planned)



Overview map



To keep up-to-date with what's happening in your region check out the regional webpage: www.nzta.govt.nz/otago-southland



Te Kāwanatanga o Aotearoa
New Zealand Government