

# Road Safety

Evidence of what works

*Speed and infrastructure*

NZ Case studies

June 2023

# Speed Limits

## SH6 Blenheim to Nelson

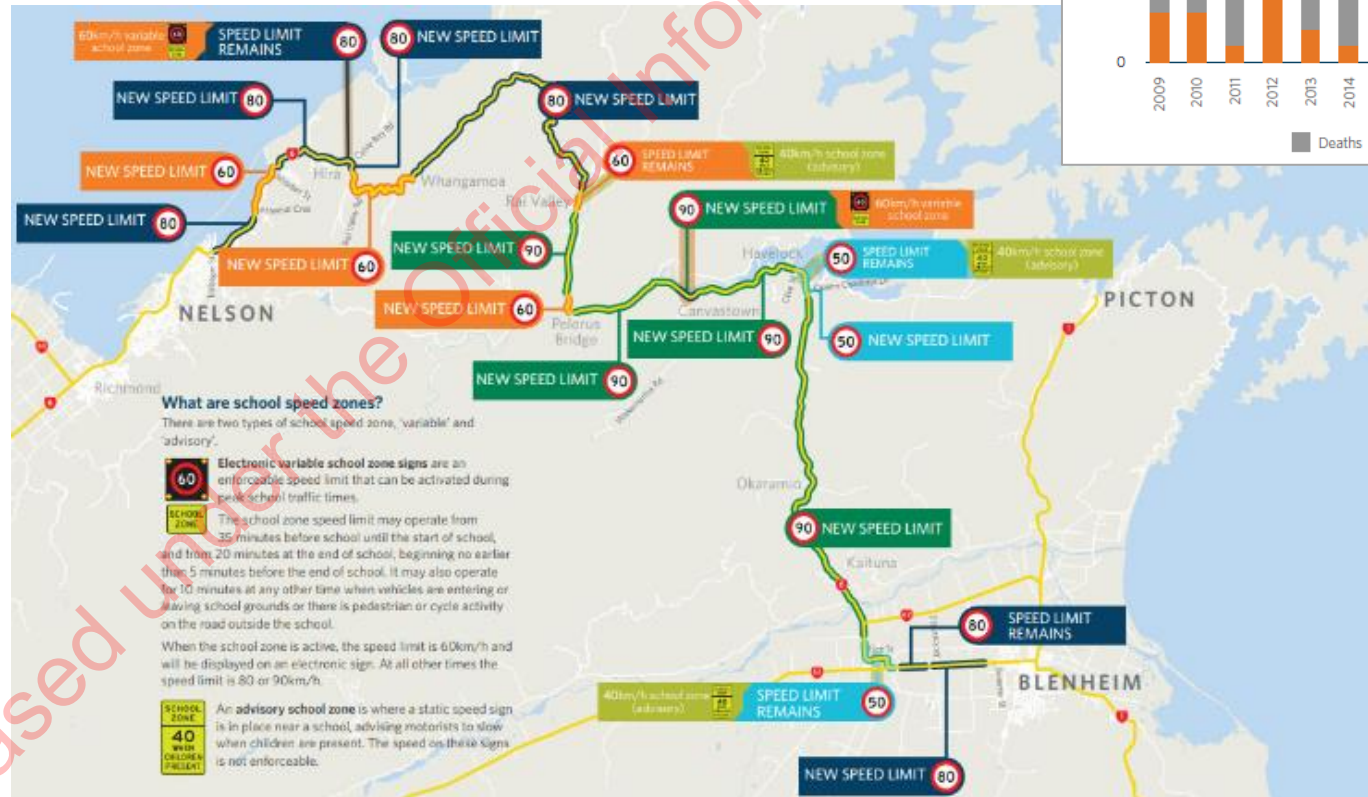
### Effectiveness

- ~80% reduction in deaths and serious injuries, noting only two (2) years post-implementation
- average journey time has increased by appropriately 4 minutes over the 110 km length, i.e. 2 seconds per kilometre.

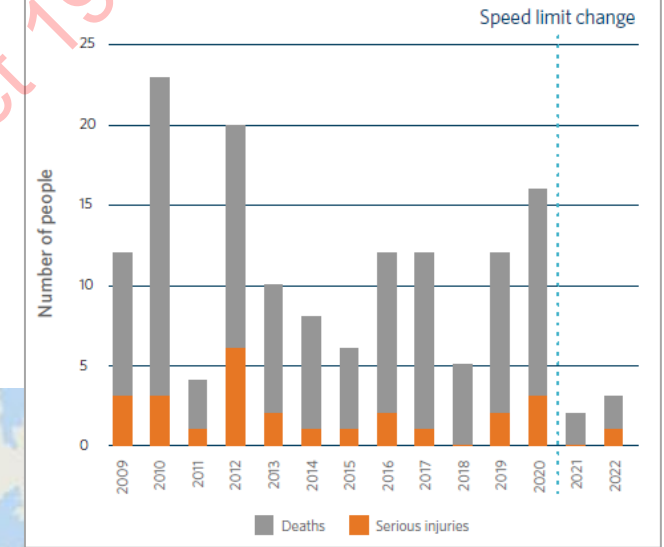
Supporting treatment

### Changes in mean speed

	Before	After	Change	% Change
Whole corridor	82.1 km/h	77.6 km/h	-4.5 km/h	-5.5%
100 km/h to 90 km/h	89.4 km/h	84.7 km/h	-4.7 km/h	-5.3%
100 km/h to 80 km/h	80.0 km/h	75.4 km/h	-4.6 km/h	-5.7%
100 km/h to 60 km/h	54.9 km/h	53.2 km/h	-1.7 km/h	-3.1%



### Death and serious injury casualties



International research suggests a 3 to 5 km/h reduction in mean speed for each 10 km/h reduction in speed limit.

International research suggests for every 1% reduction in mean speed we could expect approx. a 4% reduction in fatal crashes, a 3% reduction in FSI crashes and a 2% reduction in injury crashes.

