

Vehicle dimensions and mass permitting manual (volume 1)

Part F

HPMV 50MAX permits

Current as at 1 February 2021

Disclaimer

This publication is intended to provide general information about the permitting of vehicles that exceed dimension and mass limits. While every effort has been made to ensure the quality and accuracy of this information, readers are advised that the information provided does not replace or alter the laws of New Zealand, does not replace any legal requirement, and is not a substitute for expert advice applicable to the reader's specific situation. Readers should also be aware that the content in this publication may be replaced or amended subsequent to this publication, and any references to legislation may become out of date if that legislation is amended.

Readers are therefore advised to obtain their own legal and other expert advice before undertaking any action based on information contained in this publication.

Waka Kotahi NZ Transport Agency does not accept any responsibility or liability whatsoever, whether in contract, tort, equity or otherwise for any action taken, or reliance placed, as a result of reading any part of this publication or for any error, inadequacy, deficiency, flaw or omission from the information provided in this publication.

Record of amendments in this part

Note: Amendments are numbered consecutively and may affect individual or multiple parts in one or both volumes of the *Vehicle dimensions and mass permitting manual*. For all amendments to volume 1, please refer to the 'Record of amendments' at the start of volume 1.

Edition/ Amendment	Description of changes in this part	Effective date
2nd edition, amendment 4	<p>F2.7 Permit processing time: Due to increased volumes and the requirement for more in-depth operator compliance checks, the target time for processing HPMV 50MAX permits has been extended to 10 days.</p>	1 February 2021
2nd edition, amendment 2	<p>Updates reflect changes from the introduction of new performance based standards (PBS) by the Transport Agency in May 2019.</p> <p>Revisions also include minor clarifications and removal of dated information.</p> <p>Updated sections in amendment 2:</p> <p>Overview – 45/46t without a permit: Dated information about route restrictions removed.</p> <p>F1.1 50MAX vehicle requirements</p> <ul style="list-style-type: none"> • <i>Non pro-forma designs:</i> The Transport Agency may consider new 50MAX pro-forma designs but one-off exceptions are no longer eligible for a 50MAX permit. • <i>Maximum gross mass available:</i> Weight bands for 44,000–46,000kg, which are now available for general access without a permit, have been removed from the table. <p>F2.5 Submitting a 50MAX permit application form:</p> <ul style="list-style-type: none"> • New Zealand business number (NZBN) added to application checklist • Clarification added that false statements on the application form may incur penalties. • Third party applicant responsibilities clarified. 	1 June 2020

Contents

	See page
Record of amendments in this part	F-i
Introduction.....	F-1
Chapter F1: HPMV 50MAX permit requirements	F1-1
Overview	F1-1
F1.1 50MAX vehicle requirements.....	F1-3
F1.2 50MAX route requirements	F1-6
Chapter F2: How to apply for an HPMV 50MAX permit	F2-1
Overview	F2-1
F2.1 Overview diagram of 50MAX permitting process.....	F2-2
F2.2 Applying for multiple identical vehicles	F2-3
F2.3 Obtaining prerequisite documents.....	F2-4
F2.4 Checking for 50MAX route restrictions.....	F2-6
F2.5 Completing and submitting the 50MAX application form	F2-10
F2.6 Renewing a 50MAX permit	F2-17
F2.7 Processing time and permit fee.....	F2-19

Part F: HPMV 50MAX permits

Introduction

About this part

This part of the *Vehicle dimensions and mass permitting manual* describes Waka Kotahi NZ Transport Agency's policy for issuing high productivity motor vehicle (HPMV) 50MAX permits. It includes information on:

- 50MAX permit requirements, and
 - how to apply for a 50MAX permit.
-

Audience

The intended audience for this part is:

- transport operators who require an HPMV 50MAX permit
 - third party applicants (eg vehicle manufacturers or consultants) applying for permits on behalf of transport operators
 - Transport Agency staff involved in processing 50MAX permit applications
 - designers and manufacturers of vehicles that might operate under an HPMV 50MAX permit, and
 - enforcement agents such as the Commercial Vehicle Safety Team (CVST) of the New Zealand Police.
-

Related information

For general information about permits to exceed mass and dimension limits, refer to *Part A: Introduction to vehicle dimensions and mass permits* in this volume of the manual.

Detailed information on other HPMV permit types can be found in the following parts in this volume:

- *Part D: HPMV higher mass permits*, and
 - *Part E: HPMV overlength permits*.
-

Continued on next page

Introduction continued

Terminology and abbreviations

Specific terminology and abbreviations are used throughout this manual. For definitions and explanations, see *Part I: Definitions and glossary* in this volume of the manual.

In this part

This part contains the following chapters:

Chapter	See page
Chapter F1: HPMV 50MAX permit requirements	F1-1
Chapter F2: How to apply for an HPMV 50MAX permit	F2-1

Chapter F1: HPMV 50MAX permit requirements

Overview

About this chapter

This chapter describes the requirements for obtaining an HPMV 50MAX permit and for operating under such a permit.

What is an HPMV 50MAX permit?

An HPMV 50MAX permit is a permit to exceed standard mass limits for eligible high productivity motor vehicles (HPMVs).

To be eligible for a 50MAX permit, an HPMV must conform to a '50MAX ready' pro-forma design approved by the Transport Agency and carry no more than a total weight of 50 tonnes.

For details see section *F1.1 50MAX vehicle requirements*.

Legal basis

HPMV 50MAX permits are issued under section 5.9 of the Land Transport Rule: Vehicle Dimensions and Mass 2016 (the VDAM Rule).

45/46t without a permit

The VDAM Rule allows for gross mass limits above 44,000kg without a permit as follows:

- 45,000kg (45 tonne) for 7-axle combinations with a minimum wheelbase of 16.8m, and
- 46,000kg (46 tonne) for 8-axle combinations with a minimum wheelbase of 17.4m.

Until 30 November 2017, travel at the above limits was restricted to approved routes published on the Transport Agency's website.

From 1 December 2017, eligible vehicles operating at these limits have general access on all local roads and state highways, except where restrictions are posted.

Legislation reference: VDAM Rule section 4.3(11) and schedule 3, part 2, table 2.2.

Continued on next page

Overview continued

Overlength permit

In addition to a 50MAX permit for exceeding standard mass limits, 50MAX vehicles generally also require an HPMV overlength permit (ie a permit to exceed standard length limits). These two permits are issued as separate documents that must be carried together in the vehicle during travel.

Note: You can apply for an overlength permit and a 50MAX permit at the same time and on the same application form. For details see *Chapter F2: How to apply for an HPMV 50MAX permit*.

In this chapter

This chapter contains the following sections:

Section	See page
F1.1 50MAX vehicle requirements	F1-3
F1.2 50MAX route requirements	F1-6

F1.1 50MAX vehicle requirements

50MAX pro-forma designs

The Transport Agency has approved a number of '50MAX ready' pro-forma designs of vehicle combinations that meet the requirements for 50MAX permits.

The 50MAX pro-forma designs are slightly longer than standard 44-tonne vehicles, have nine or ten axles and are capable of carrying a total weight of up to 50 tonnes.

Because of the load distribution over more axles in a vehicle that conforms to a 50MAX pro-forma design, there is no additional wear on road pavements per tonne of freight compared with a standard 44-tonne vehicle. However, 50MAX HPMVs still require a permit to operate because they exceed standard mass limits.

50MAX pro-forma designs can be found on the Transport Agency's website at www.nzta.govt.nz/commercial-driving/high-productivity/50max/50max-information-for-operators-and-manufacturers/50max-proforma-designs/.

Non pro-forma vehicles

If you have a vehicle design that does not comply with a 50MAX pro-forma design, you may apply to the Transport Agency to get the design of your vehicle accepted as a new 50MAX pro-forma design.

The Transport Agency may consider approving a new pro-forma design if there is wider industry support for the new design.

Note: One-off exceptions to the 50MAX pro-forma designs are not eligible for a 50MAX permit.

Contact the Transport Agency on info50MAX@nzta.govt.nz or call 0800 699 000 for more information.

50MAX tyre requirement

Drive axles on the prime mover and all trailer axles must be twin-tyred to meet the 50MAX requirement for neutral pavement wear.

Vehicles must be registered

A prerequisite for a 50MAX permit is that all vehicle units applied for must be registered.

Vehicle identification numbers (VINs) are not accepted for 50MAX permit applications.

Vehicle attributes check

To ensure a 50MAX vehicle is capable of exceeding standard mass limits and can be operated safely, the Transport Agency requires a vehicle attributes check with every permit application.

Continued on next page

F1.1 50MAX vehicle requirements continued

Vehicle attributes check

(continued)

The attributes check confirms that:

- the vehicle combination conforms to a 50MAX pro-forma design
- the vehicle combination has the required safety features to be operated safely (eg electronic braking systems and stability control), and
- all vehicle units are capable of carrying a heavier load within their certifications.

Approved certifiers

The checks must be carried out by a Transport Agency approved heavy vehicle specialist certifier. Approved certifiers are listed on the Transport Agency's website at www.nzta.govt.nz/resources/heavy-vehicle-specialist-certifiers.

Certifiers must complete a specified 50MAX combination attributes check sheet **for every vehicle combination applied for**.

Divisible and indivisible loads

Vehicles may carry divisible or indivisible loads under a 50MAX permit.

Maximum gross mass available

The maximum gross mass a vehicle can carry under a 50MAX permit depends on the spacing from its first to its last axle, as shown in this table:

Distance from the centre of the first axle to the centre of the last axle	Maximum gross mass (kg)
18.0m but less than 18.6m	47,000
18.6m but less than 19.4m	48,000
19.4m but less than 20.0m	49,000
20.0m or more	50,000

How to measure axle spacings

It is important to accurately measure axle spacings when applying for a 50MAX permit. Axle spacings are recorded on the permit and will be enforced by the Commercial Vehicle Safety Team (CVST) of the New Zealand Police.

Axle spacings should be measured on the laden vehicle from the centre of the first axle to the centre of the last axle. For details see section *D3.3 How to measure axle spacings* in part D of this volume.

Continued on next page

F1.1 50MAX vehicle requirements continued

Retractable axles

Retractable axles (including suspensions that transfer load from one axle to others outside of load sharing requirements) must not be fitted on 50MAX vehicles, unless configured to only retract when the vehicle is unladen. Such axles must also comply with all other legal requirements for retractable axles.

'H' sign must be displayed

Vehicles operating under a 50MAX permit must display the yellow high productivity motor vehicle sign (the 'H' sign).

For details see section *D1.4 'H' sign requirements and specifications* in part D of this volume.

F1.2 50MAX route requirements

50MAX network

A 50MAX permit allows vehicles to travel on any road within the 50MAX networks **except** over structures and roads specifically listed as restricted in the 50MAX route maps issued by the Transport Agency.

50MAX route maps

The Transport Agency provides detailed maps on its website that show where 50MAX vehicles can safely travel. The maps also show which roads have restrictions and are not suitable for 50MAX vehicles.

The Transport Agency updates the maps monthly as more local road controlling authorities (RCAs) open up their networks and restricted structures are upgraded. New restricted structures may also be added from time to time.

The maps of 50MAX routes can be found on the Transport Agency's website at www.nzta.govt.nz/commercial-driving/high-productivity/50max/50max-information-for-operators-and-manufacturers/map-of-50max-routes/.

For guidance on how to use the maps, see section *F2.4 Checking for 50MAX route restrictions*.

Local roads

The majority of local road controlling authorities (RCAs) have delegated authority to issue 50MAX permits for roads under their control to the Transport Agency.

In areas where the local RCA has not delegated permit issuing authority to the Transport Agency, operators need to apply for HPMV higher mass permits from the relevant local RCAs if their route involves local roads.

To find out in which local RCAs you have to apply for a separate permit to use local roads, refer to the '50MAX Restricted Road Controlling Authorities' section in the **PDF versions** of the 50MAX maps on the Transport Agency's website.

Operator's responsibility

Under section 3.1(2) of VDAM Rule, vehicle operators must ensure that their vehicles and their loads:

- are manoeuvrable
- fit safely on a road, and
- interact safely with road users.

In addition to this general requirement, operators on a 50MAX permit must comply with any route restrictions listed in the current version of the 50MAX maps on the Transport Agency's website. This is specified as a set of conditions for routes and structures on the 50MAX permit.

Continued on next page

F1.2 50MAX route requirements continued

**Operator's
responsibility**
(continued)

Operators and their drivers must regularly check the Transport Agency's maps of 50MAX routes before travel to confirm that their intended route is open to 50MAX vehicles.

They must also comply with any restrictions imposed by a local RCA on roads or structures under its control (for example, individual bridge postings).

Chapter F2: How to apply for an HPMV 50MAX permit

Overview

About this chapter

This chapter explains how to apply for an HPMV 50MAX permit. It is intended to guide applicants through the process of:

- gathering prerequisite documentation
- checking for any 50MAX route restrictions, and
- submitting an application.

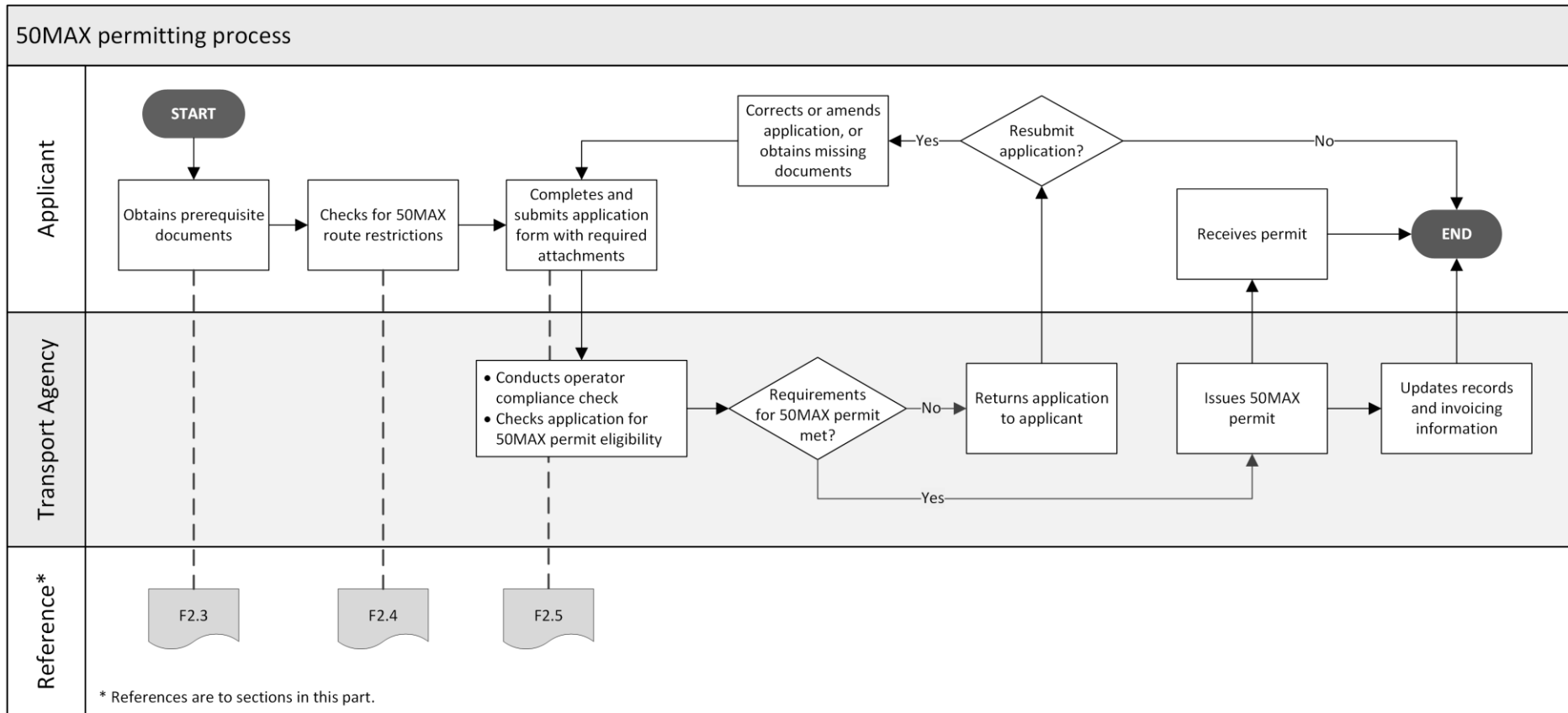
In this chapter

This chapter contains the following sections:

Section	See page
F2.1 Overview diagram of 50MAX permitting process	F2-2
F2.2 Applying for multiple identical vehicles	F2-3
F2.3 Obtaining prerequisite documents	F2-4
F2.4 Checking for 50MAX route restrictions	F2-6
F2.5 Completing and submitting the 50MAX application form	F2-10
F2.6 Renewing a 50MAX permit	F2-17
F2.7 Processing time and permit fee	F2-19

F2.1 Overview diagram of 50MAX permitting process

Diagram This diagram gives a high-level overview of the 50MAX permitting process.



F2.2 Applying for multiple identical vehicles

Multiple trailers

You may apply for a 50MAX permit for one prime mover and up to five identical trailers on the same application.

Criteria for identical vehicles

To be considered identical, vehicles must meet the following requirements:

- Trailers must have:
 - identical axle spacings
 - the same tyre size, and
 - identical inner and outer wheel tracks.
 - All units in the combination (including the prime mover) must have, for the load applied for, sufficient:
 - GVM
 - axle ratings
 - maximum towed mass (MTM), GCM, 5th wheel, tow ball ratings, etc, where applicable, and
 - brake capacity.
-

Accurate measurements

Axle spacings on a permit will be enforced by the Commercial Vehicle Safety Team (CVST) of the New Zealand Police. Breaches may result in fines.

It is therefore important that you provide accurate measurements on your permit application. See section *D3.3 How to measure axle spacings* in part D of this volume.

F2.3 Obtaining prerequisite documents

Prerequisite documents

Before submitting an application for a 50MAX permit, you must obtain and prepare the following prerequisite documents:

1. a completed and signed 50MAX combination attributes check sheet for each vehicle combination you are applying for, and
2. a 50MAX ready pro-forma vehicle design that matches your vehicle combination and shows its dimensions.

The specific requirements for these documents are described below.

1. HPMV attributes check sheet for 50MAX

You must obtain a 50MAX combination attributes check sheet for your vehicle combination from a Transport Agency approved heavy vehicle specialist certifier. The attributes check sheet confirms that your vehicle can safely operate at up to 50 tonnes.

A list of Transport Agency approved heavy vehicle specialist certifiers can be found at www.nzta.govt.nz/resources/heavy-vehicle-specialist-certifiers.

Note: The Transport Agency has issued a 50MAX-specific combination attributes check sheet to approved certifiers. You should confirm with certifiers that they have the correct attributes check sheet for 50MAX permits.

Only the correct 50MAX combination attributes check sheets will be accepted with your application.

Separate attributes check sheets for multiple combinations

When you apply for a 50MAX permit, you must submit a separate 50MAX combination attributes check sheet **for each vehicle combination** on your application form.

Each attributes check sheet must be completed and signed by a certifier.

2. 50MAX ready pro-forma vehicle designs

You must submit a Transport Agency approved 50MAX pro-forma design diagram that matches your vehicle combination and includes its dimensions together with your application.

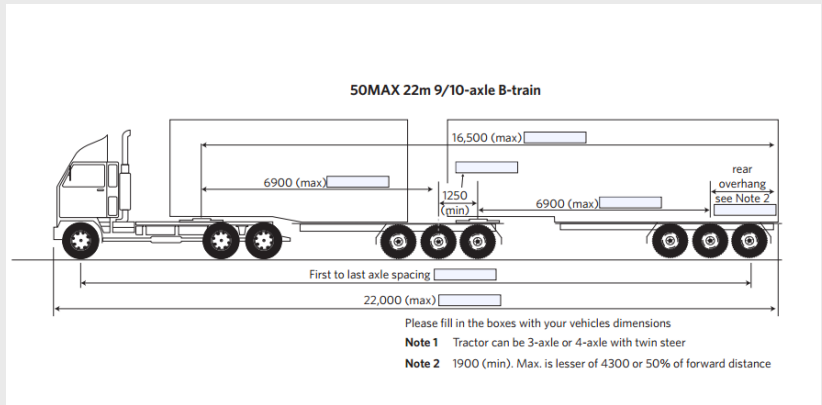
Note: Only one pro-forma diagram is required per application because all trailers that are on the permit with the prime mover must be identical in design, performance and dimensions.

Continued on next page

F2.3 Obtaining prerequisite documents continued

2. 50MAX ready pro-forma vehicle designs (continued)

Follow the steps below to download a 50MAX pro-forma design from the Transport Agency's website and complete it with your vehicle's dimensions.

Step	Action
1	Go to the 50MAX pro-forma designs page on the Transport Agency's website at www.nzta.govt.nz/commercial-driving/high-productivity/50max/50max-information-for-operators-and-manufacturers/50max-proforma-designs/ .
2	Scroll down the page and identify the design that matches your vehicle combination.
3	Click on the blue download link to a PDF file below the drawing. Result: A PDF document with the drawing and interactive fields opens in your browser.
4	Enter the relevant dimensions from your vehicle combination in the interactive fields (the grey fields in the image below).  <p>The diagram shows a side view of a 50MAX 22m 9/10-axle B-train. It includes a tractor and a trailer. Dimensions are indicated with arrows and boxes for input: 6900 (max) for the tractor length, 1250 (min) for the tractor wheelbase, 16,500 (max) for the trailer length, 6900 (max) for the trailer wheelbase, and 22,000 (max) for the total length. A 'rear overhang' is also indicated. Below the diagram, there are instructions: 'Please fill in the boxes with your vehicles dimensions', 'Note 1 Tractor can be 3-axle or 4-axle with twin steer', and 'Note 2 1900 (min). Max. is lesser of 4300 or 50% of forward distance'.</p>
5	Save a copy of the PDF file on your computer or local network. Note: You need the saved version of the file with your vehicle combination's dimensions so you can attach it to your 50MAX permit application.

F2.4 Checking for 50MAX route restrictions

Two types of map

There are two types of map on the Transport Agency's website to check for route restrictions:

1. **The 50MAX interactive map:** This is a web-based map that allows you to search for destinations and zoom in and out to identify a suitable route around the displayed bridge restrictions.

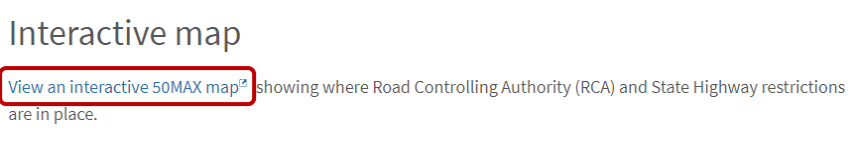
This map is the best tool for planning your route because it provides the greatest level of detail.

2. **The 50MAX 'book of maps':** These are PDF maps that you can print out. They include lists of restricted structures and roads as well as restricted local roads.

How to use these maps to check for route restrictions is described below.

1. How to use the 50MAX interactive map

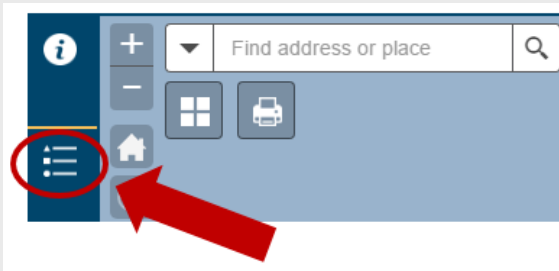
Follow the steps below to check for route restrictions on the 50MAX interactive map.

Step	Action
1	Go to www.nzta.govt.nz/commercial-driving/high-productivity/50max/50max-information-for-operators-and-manufacturers/map-of-50max-routes/ .
2	<p>Click on View an interactive 50MAX map:</p>  <p>Result: The 50MAX interactive map opens in a new window in your browser.</p>

Continued on next page

F2.4 Checking for 50MAX route restrictions continued

1. How to use the 50MAX interactive map (continued)

Step	Action
3	<p>In the interactive map, click on the Legend icon on the left:</p>  <p>Result: Explanations for the coloured symbols in the map are displayed.</p>
4	<p>Check your desired route on the map for any restricted structures or local roads.</p> <p>Tips:</p> <ul style="list-style-type: none"> You can quickly zoom to a location by typing the name in the search field. Click on the coloured symbols on the map for more details about restrictions. <p>Important: Remember that it is your responsibility to ensure you can complete your planned journey from origin to final destination on unrestricted roads.</p>

Continued on next page

F2.4 Checking for 50MAX route restrictions continued

2. How to use the 50MAX book of maps

Follow the steps below to check for route restrictions on the PDF 50MAX book of maps.


Note: It is recommended that you use the interactive 50MAX map for the detailed planning of your route and use the PDF maps primarily to print maps for the driver to carry in the cab.

Step	Action
1	Go to www.nzta.govt.nz/commercial-driving/high-productivity/50max/50max-information-for-operators-and-manufacturers/map-of-50max-routes/ .
2	<p>Scroll down the page to the '50MAX book of maps' heading.</p> <div data-bbox="603 779 1082 1547" style="border: 1px solid #ccc; padding: 10px; margin: 10px 0;"> <p style="text-align: center;">50MAX book of maps</p> <p style="text-align: center;">All maps last updated: 24 February 2020</p> <ul style="list-style-type: none"> • North Island [PDF, 10 MB] • South Island [PDF, 4.9 MB] <p>North Island maps</p> <ul style="list-style-type: none"> • Northland [PDF, 932 KB] • Auckland [PDF, 455 KB] • Waikato [PDF, 2.3 MB] • Bay of Plenty [PDF, 1.5 MB] • Gisborne [PDF, 340 KB] • Hawke's Bay [PDF, 1.1 MB] • Taranaki [PDF, 966 KB] • Manawatū and Whanganui [PDF, 2.1 MB] • Wellington [PDF, 1.8 MB] </div> <p>Note that in addition to maps for the entire North and South Islands, there are also smaller maps for specific regions.</p>
3	<p>Click on the region name that covers your planned journey.</p> <p>Result: A PDF file with maps and numbered route restrictions opens in your browser.</p>

Continued on next page

F2.4 Checking for 50MAX route restrictions continued

2. How to use the 50MAX book of maps (continued)

Step	Action
4	<p>Carefully check the map and identify any restrictions indicated by red crosses on your desired route.</p>  <p>Note: If you are unfamiliar with the route, look for the number next to the red cross and look it up in the tables in the PDF file that list the numbers and the name of the restricted bridge or road.</p>
5	<p>Scroll through the PDF file and carefully check the sections listing restrictions (if any):</p> <ul style="list-style-type: none"> – local road 50MAX bridge restrictions, and – state highway 50MAX restrictions.
6	<p>If your initial choice of route includes restrictions, find an alternative route without restrictions.</p> <p>Important: Remember that it is your responsibility to ensure you or your driver can complete your planned journey from origin to final destination on unrestricted roads.</p>
7	<p>Print the PDF file to give to your driver for reference, if necessary.</p>

F2.5 Completing and submitting the 50MAX application form

Online form

The 50MAX permit application form must be completed and submitted on the Transport Agency's website. The Transport Agency does not accept printed copies of the form.

Before you access the application form

You must complete the online application form **in one session**, or else you will lose information that you have entered. So before you access the application form, ensure you have the following information and documents at hand:

- Electronic copies of the completed and signed 50MAX HPMV combination attributes check sheets (one for each vehicle combination applied for).
 - An electronic copy of the relevant 50MAX pro-forma design completed with the dimensions of your vehicle combination.
 - Your TSL number, New Zealand business number (NZBN, if available) and company contact details.
 - The registration numbers of all vehicle units.
 - The overall length of your vehicle combination and distance from the first to the last axle (which determines the maximum gross mass you can apply for – see *Maximum gross mass available* in section F1.1).
 - The origin and the destination of the route you expect to use most frequently.
-

Continued on next page

F2.5 Completing and submitting the 50MAX application form continued

Accessing and completing the application form

Follow the steps below to access the online 50MAX application form.

Note: You cannot download or save the application form and must complete it in one session, or else you will lose any information you have entered.

Step	Action																								
1	Go to www.nzta.govt.nz/commercial-driving/high-productivity/50max/50max-information-for-operators-and-manufacturers/application-form/ .																								
2	<p>Complete all required fields in the form, which are marked with a red asterisk (*).</p> <div style="border: 1px solid #ccc; padding: 10px; margin: 10px 0;"> <p>50MAX Application form</p> <p>Application for a 50MAX Permit to exceed mass limits</p> <p>This information request is required to process an application for a High Productivity Motor Vehicle Permit under the Land Transport Rule: Vehicle Dimensions and Mass 2016.</p> <p>If your application is successful a Permit will be issued for the specified vehicle combination to operate, subject to the Terms and Conditions of the Permit, as a High Productivity Motor Vehicle within a specified region at higher mass and if required a Permit to operate as over length nationwide.</p> <p>Note: All fields marked with (*) are mandatory.</p> <div style="border: 1px solid #ccc; padding: 5px; margin: 5px 0;"> <p>Company details</p> <table style="width: 100%; border-collapse: collapse;"> <tr> <td style="width: 50%;">TSL no: *</td> <td><input type="text"/></td> <td style="width: 50%;">TSL company name: *</td> <td><input type="text"/></td> </tr> <tr> <td>New Zealand Business Number(NZBN):</td> <td><input type="text"/></td> <td>Contact name: *</td> <td><input type="text"/></td> </tr> <tr> <td>Email address: *</td> <td><input type="text"/></td> <td>Confirm email address: *</td> <td><input type="text"/></td> </tr> <tr> <td>Billing address: *</td> <td><input type="text"/></td> <td>Town/City: *</td> <td><input type="text"/></td> </tr> <tr> <td>Contact ph no: * (eg 04 801 1234)</td> <td><input type="text"/></td> <td>Contact ph no:</td> <td><input type="text"/></td> </tr> <tr> <td>Purchase order no. or reference: * <small>(this will appear on your invoice)</small></td> <td><input type="text"/></td> <td></td> <td></td> </tr> </table> </div> </div>	TSL no: *	<input type="text"/>	TSL company name: *	<input type="text"/>	New Zealand Business Number(NZBN):	<input type="text"/>	Contact name: *	<input type="text"/>	Email address: *	<input type="text"/>	Confirm email address: *	<input type="text"/>	Billing address: *	<input type="text"/>	Town/City: *	<input type="text"/>	Contact ph no: * (eg 04 801 1234)	<input type="text"/>	Contact ph no:	<input type="text"/>	Purchase order no. or reference: * <small>(this will appear on your invoice)</small>	<input type="text"/>		
TSL no: *	<input type="text"/>	TSL company name: *	<input type="text"/>																						
New Zealand Business Number(NZBN):	<input type="text"/>	Contact name: *	<input type="text"/>																						
Email address: *	<input type="text"/>	Confirm email address: *	<input type="text"/>																						
Billing address: *	<input type="text"/>	Town/City: *	<input type="text"/>																						
Contact ph no: * (eg 04 801 1234)	<input type="text"/>	Contact ph no:	<input type="text"/>																						
Purchase order no. or reference: * <small>(this will appear on your invoice)</small>	<input type="text"/>																								
3	Follow the instructions in the form for attaching required documents (ie attributes check sheets and pro-forma design diagram – see <i>F2.3 Obtaining prerequisite documents</i>).																								

For more guidance on completing the application form refer to the rest of this section.

Continued on next page

F2.5 Completing and submitting the 50MAX application form continued

Applying for an overlength permit

Most vehicle combinations eligible for a 50MAX permit require an HPMV overlength permit (ie a permit to exceed length limits) in addition to the 50MAX permit.

If you already have an overlength permit for your vehicle, select the **I already have...** option in the 'Vehicle combination and mass details' section of the application form.

If you do not already have an overlength permit for your vehicle, select the **I do not have...** option. The Transport Agency will then issue an overlength permit together with the 50MAX permit.

Vehicle combination and mass details

You may apply for a single Prime Mover unit and up to 5 trailers.
Note: All trailer units must have identical dimensions and configuration.

You will require a HPMV Permit to Exceed Length Limits for each of the Vehicle Combinations you are applying for. If you already have this Permit for any of the vehicle combinations, you will not have to reapply. You need to apply for any of the vehicle combinations that do not have a HPMV Permit to Exceed Length Limits. (A HPMV Permit to Exceed Length Limits will be issued with your 50MAX Permit to Exceed Mass Limits)

Prime mover registration no: *
(Max 6 characters)

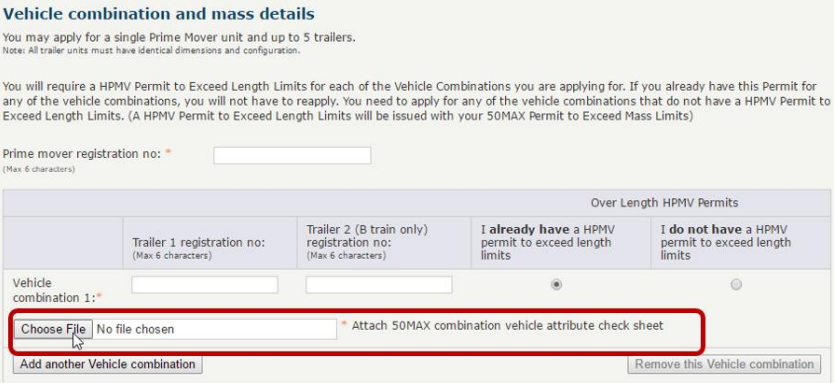
		Over Length HPMV Permits	
	Trailer 1 registration no: <small>(Max 6 characters)</small>	Trailer 2 (B train only) registration no: <small>(Max 6 characters)</small>	
Vehicle combination 1: *	<input type="text"/>	<input type="text"/>	<input checked="" type="radio"/> I already have a HPMV permit to exceed length limits <input type="radio"/> I do not have a HPMV permit to exceed length limits
<input type="button" value="Choose File"/> No file chosen		* Attach 50MAX combination vehicle attribute check sheet	
<input type="button" value="Add another Vehicle combination"/>		<input type="button" value="Remove this Vehicle combination"/>	

Continued on next page

F2.5 Completing and submitting the 50MAX application form continued

Attaching the 50MAX attributes check sheet(s)

Follow the steps below to attach the 50MAX combination attributes check sheet(s) to your application.

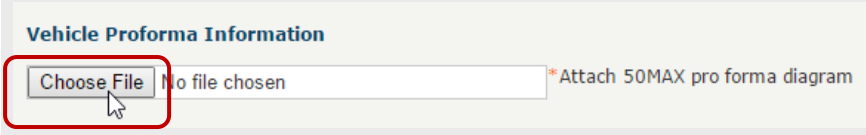
Step	Action
1	<p>In the 'Vehicle combination and mass details' section of the application form, click on Choose File (outlined in red below).</p>  <p>The screenshot shows the 'Vehicle combination and mass details' section. It includes a 'Prime mover registration no.' field, a table for 'Over Length HPMV Permits' with columns for 'Trailer 1 registration no.', 'Trailer 2 (B train only) registration no.', 'I already have a HPMV permit to exceed length limits', and 'I do not have a HPMV permit to exceed length limits'. Below this is a 'Vehicle combination 1' section with a 'Choose File' button, a 'No file chosen' text, and a file name 'Attach 50MAX combination vehicle attribute check sheet'. There are also 'Add another Vehicle combination' and 'Remove this Vehicle combination' buttons.</p>
2	<p>In the dialog box that opens, select the attributes check sheet file from your system and click on Open.</p> <p>Result: The attributes check sheet will be uploaded and attached to your application when you submit it.</p>
3	<p>If you are applying for multiple vehicle combinations, click on Add another Vehicle combination to enter the registration numbers and upload more attributes check sheets.</p>
4	<p>To remove an attributes check sheet, click on Remove this Vehicle combination.</p>

Continued on next page

F2.5 Completing and submitting the 50MAX application form continued

Attaching a pro-forma design diagram


Follow the steps below to attach a 50MAX pro-forma design diagram to your application.

Step	Action
1	<p>Go to the 'Vehicle Proforma Information' heading on the application form and click on Choose File below the heading.</p> 
2	<p>In the dialog box that opens, select the file of the pro-forma diagram that you completed and saved earlier (as described in section F2.3 above) and click on Open.</p> <p>The pro-forma diagram will be uploaded and attached to your application when you submit it.</p>

Declaration and signature

By typing your name in the field at the bottom of the application form, you declare that the information you provided in the form is true and correct, and that you have read and understood all the notes in the application form.

As additional confirmation, you must also tick the box below the name field.



Note: By selecting the tick box, you are making a formal declaration. False statements could be open to prosecution and subject to a penalty of up to \$10,000.

Legislation reference: Land Transport Act 1998, section 44.

Continued on next page

F2.5 Completing and submitting the 50MAX application form

continued

Third party applicants

Third party applicants applying for a 50MAX permit on behalf of a transport operator are bound by the declaration on the application form. They must ensure that they are duly authorised to make the application and that the details provided are complete, true and correct to the best of their knowledge.

Third party applicants must forward all relevant information, terms and conditions to the eventual user of the permit.

Automatic summary email

The tick box to indicate that you wish to receive a summary of your application is selected by default.

Declaration and signatory
I declare that the particulars contained in this application are true and correct. I confirm I have read and understood all the notes in this application form.*

Name: *

Please tick the tick-box to indicate you agree with the declaration*

If you would like to receive a summary of this application via email, please check here

The summary email is a useful record of the information you submitted with your application, including attached documents.

If you do not wish to receive this automated email, uncheck the tick box.

Completeness check

To ensure your application can be processed quickly, double-check that you have completed all required fields on the application form and attached all required documents.

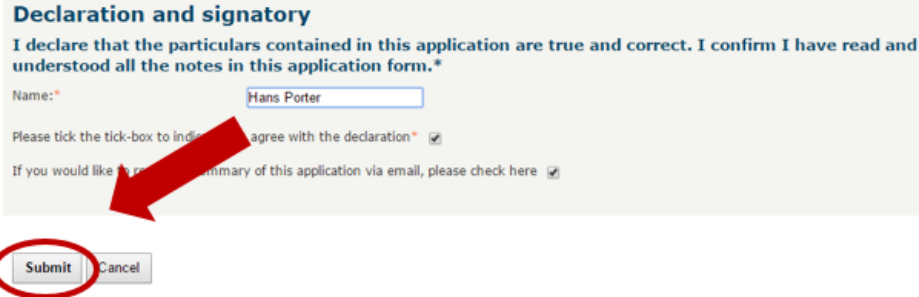
The Transport Agency will return your application and require you to resubmit it if it is incomplete or missing the necessary attachments.

Continued on next page

F2.5 Completing and submitting the 50MAX application form continued

Submitting the form

Once you are satisfied that all information is complete and correct, click **Submit**.



Declaration and signatory

I declare that the particulars contained in this application are true and correct. I confirm I have read and understood all the notes in this application form.*

Name:

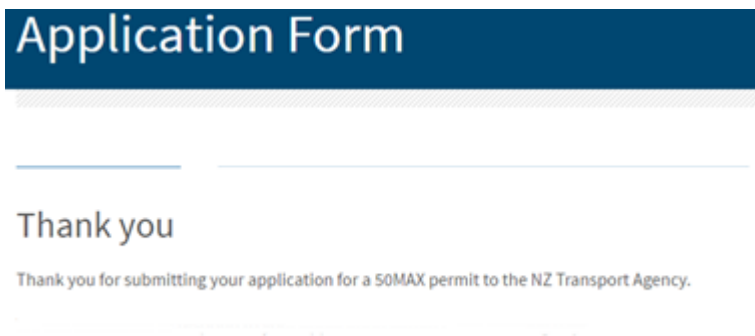
Please tick the tick-box to indicate you agree with the declaration*

If you would like to receive a summary of this application via email, please check here

Note: If you click **Cancel**, all information you entered into the form is cleared and any attached documents are removed.

Confirmation screen and email

If you have successfully submitted your application, a 'Thank you' confirmation page is displayed:



You will also receive a summary email of your application (unless you have unchecked the default option).

Note: If the 'Thank you' page is not displayed or you do not receive a confirmation email, the Transport Agency has not received your application.

Help

If you need help with a 50MAX permit application, email info50MAX@nzta.govt.nz or call the Transport Agency on 0800 699 000.

F2.6 Renewing a 50MAX permit

About renewals

To renew a 50MAX permit, you only need to complete a short renewal application form (see *Accessing and completing the renewal form* below).

Attributes check sheets or pro-forma design diagrams are not required with renewal applications.

You can renew up to two 50MAX permits at the same time.

Renewal or new application?

You can renew a 50MAX permit if:

- you are using the same vehicle combination(s) specified on your current permit
- there have been no modifications to the vehicle units
- total mass and axle spacings are the same as on the current permit, and
- you will travel in the same region(s) specified on the current permit.

If any of the above details has changed, you need to reapply for a new permit.

Required information

You must complete the 50MAX permit renewal application form in one session, or else you will lose all information that you have entered. So before you access the renewal form, ensure you have the following information and documents at hand:

- Your TSL number, New Zealand business number (NZBN) and company contact details.
 - The permit numbers of the permits you wish to renew (up to two permits per renewal application).
 - Electronic copies of the permits you wish to renew.
-

Accessing and completing the renewal form

You can access the 50MAX permit renewal application form at www.nzta.govt.nz/commercial-driving/high-productivity/50max/50max-information-for-operators-and-manufacturers/application-form-renewal/.

Complete all required fields in the online form and follow the instructions for uploading electronic copies of the permits you wish to renew.

Continued on next page

F2.6 Renewing a 50MAX permit continued

Declaration By selecting the tick box and typing your name in the Declaration section of the renewal form, you confirm that:

- the information you have provided is true and correct, and
- the details of the vehicle combination have not been altered since the original 50MAX permit was issued.

Note: By entering your name and selecting the tick box, you are making a formal declaration under the Land Transport Act 1998. False statements may be prosecuted.

Completeness check Before you click on **Submit** on the renewal application form, double-check that you have:

- completed all required fields
- attached electronic copies of the permits you wish to renew, and
- selected the tick box and entered your name in the Declaration section at the bottom of the form.

The Transport Agency will return your application and require you to resubmit it if it is incomplete or has missing or incorrect attachments.

Help If you need help with a 50MAX permit renewal application, email info50MAX@nzta.govt.nz or call the Transport Agency on 0800 699 000.

F2.7 Processing time and permit fee

Processing time	The Transport Agency aims to process your 50MAX permit application within 10 working days.
------------------------	--

Permit fee	<p>When your 50MAX permit application has been processed, you receive an invoice for \$54.55 (excl. GST).</p> <p>The standard permit fee also applies to permit renewals and is charged for each permit issued.</p>
-------------------	---
