

Road safety outcomes

Quarterly report to the Minister of Transport and the Minister of Police
for October – December 2011



New Zealand Government

This quarterly summary of road safety outcomes shows:

- an overall picture of fatal and serious casualties in road crashes over the past five years
- a set of intermediate outcome measures for each of the Safer Journeys areas of concern
- the trend in a representative headline measure over the past five years for each of the Safer Journeys areas of concern
- Regional and Police District comparisons against a representative headline outcome measure for each of the Safer Journeys areas of concern.

Outcome measures are provided for the most recently available quarter, to December 2011 in some cases but usually to September 2011. Some measures are only available on an annual basis.

Not all of the outcome measures are available at a Regional or Police District level, and an alternative headline measure is presented in the relevant charts. Also in the regional and police district charts, some measures are shown on an averaged three-yearly basis where the numbers involved are too small to give meaningful single year comparisons.

Key results for the quarter are:

- the number of road fatalities continued to fall during 2011, and the year's total was **less than 300** for the first time since 1952
- fatal and serious crash numbers fell by 17% in the past 5 years, and the major crash types (head-on, run off road, intersection) have **reduced by 23%**
- while other crash trends fall, pedestrian and cyclist casualty rates remain steady – pedestrians and cyclists represent around **16% of road crash hospitalisations**
- crash, fatality and motorcycle crash rates are unusually high in regions such as the **West Coast and Waikato** which have extensive rural road networks.

More information ...

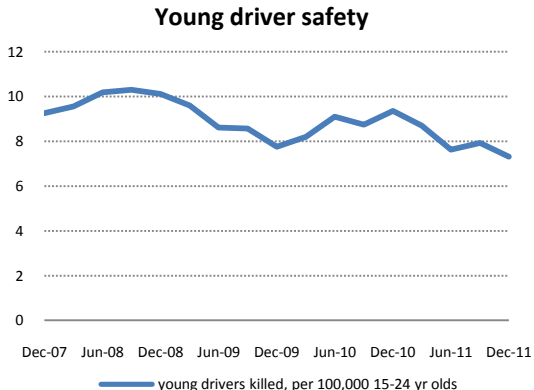
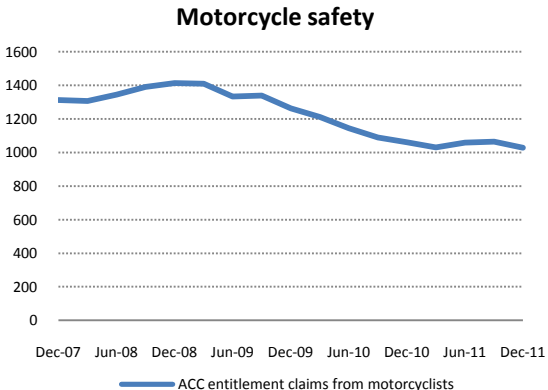
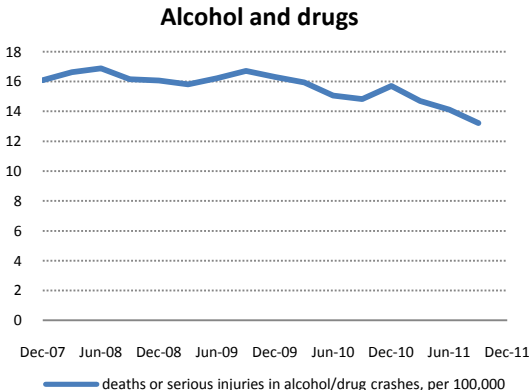
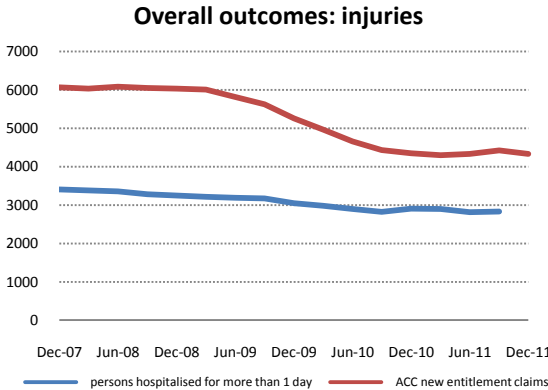
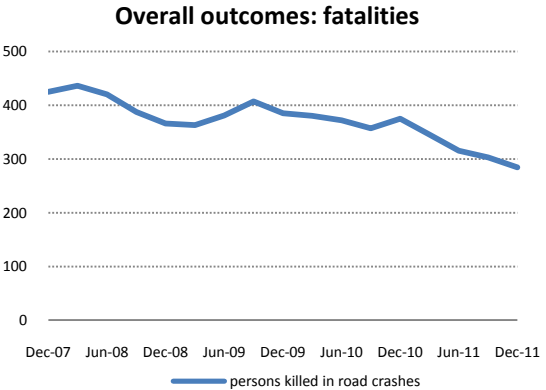
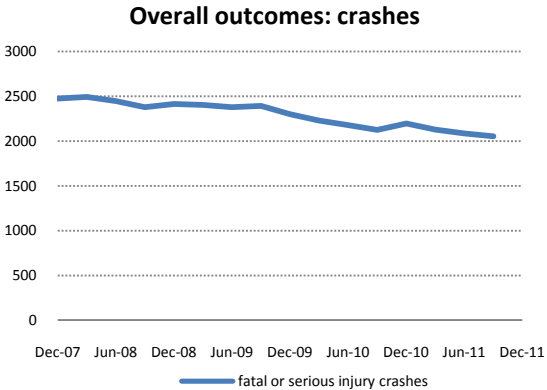
Published 9 February 2012

NZ Transport Agency
Private Bag 6995
Wellington 6141

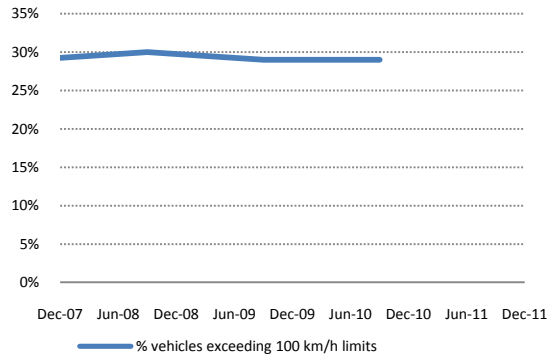
This document is available on the NZTA's website at www.nzta.govt.nz/resources/road-safety-outcomes.

ROAD SAFETY OUTCOMES 2007-2011 (12-MONTH ROLLING FIGURES)

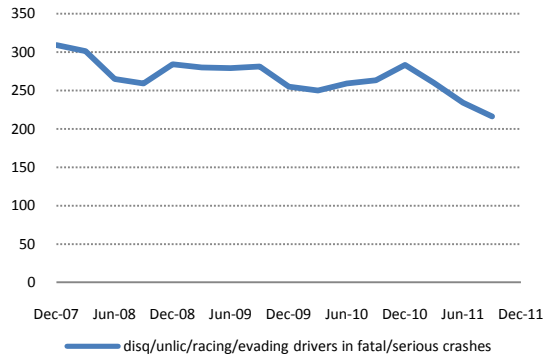
Outcome measures shown in the following charts and tables are provided for the last five years, up to the most recently available quarter. The measures are obtained from the NZ Transport Agency's Crash Analysis System, ACC entitlement claims, Ministry of Health hospital discharge data, Ministry of Transport speed, restraint and public attitude surveys, Statistics NZ population data, and new vehicle registration figures.



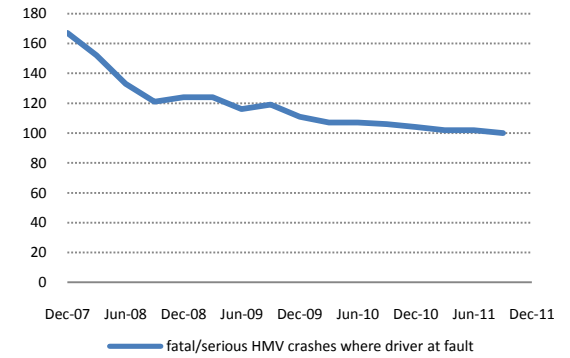
Speed



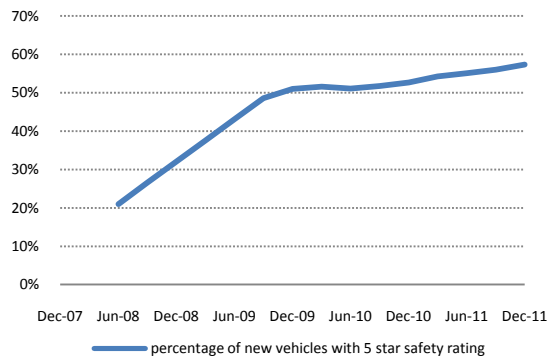
High risk drivers



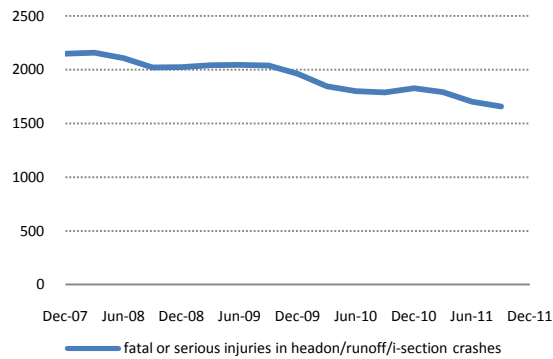
Heavy vehicles



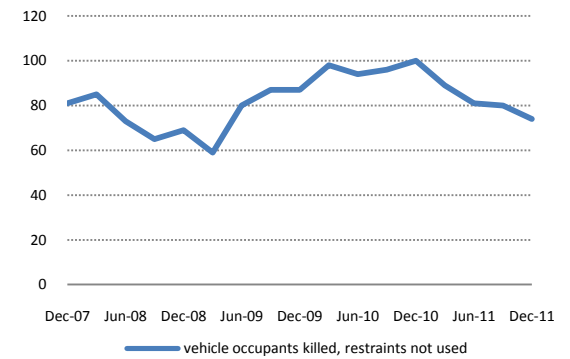
New cars and light commercials



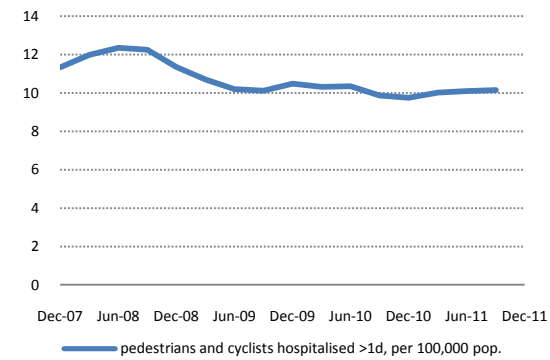
Roads and roadsides



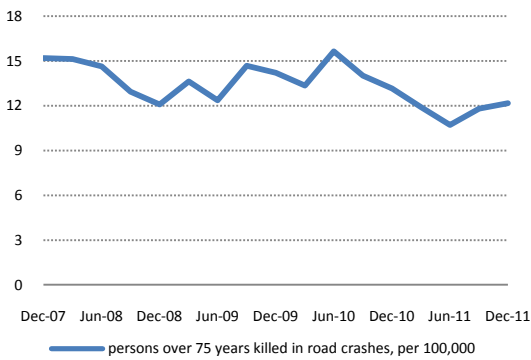
Restraints



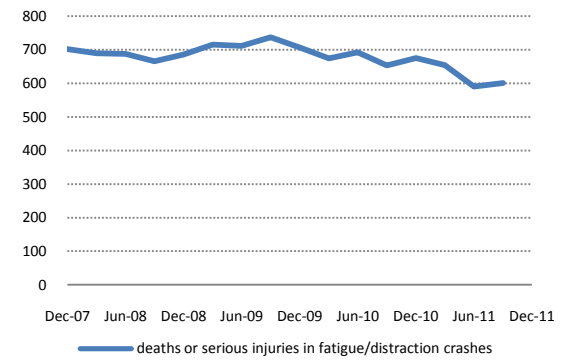
Walking and cycling



Older road users



Fatigue and distraction



ROAD SAFETY OUTCOMES	LATEST FIGURES			LAST FIVE YEARS				
	latest quarter	latest 12 months	as at	2007	2008	2009	2010	2011
Overall outcomes								
fatal or serious injury crashes	444	2053	Sep 2011	2475	2413	2298	2194	
persons killed in road crashes	78	284	Dec 2011	421	365	384	375	284
persons killed or seriously injured	532	2477	Sep 2011	3056	2878	2809	2663	
persons killed or seriously injured, per 100 million vehicle km travelled, per year	499	554	Sep 2011	759	706	682	634	
persons hospitalised for more than 1 day (>1d)	619	2827	Sep 2011	3404	3240	3032	2906	
ACC new entitlement claims	983	4333	Dec 2011	6062	6027	5252	4347	4333
Alcohol and drugs								
deaths or serious injuries in alcohol/drug crashes, per 100,000 population, per year	10.1	13.2	Sep 2011	16.2	16.2	16.3	15.7	
drivers killed with excess alcohol	11	60	Sep 2011	65	59	66	67	
% think high probability being stopped at CBT checkpoint	-	56%	2010	54%	51%	52%	56%	
% think high probability being tested for drugs (NEW)	-	n/a	-	-	-	-	-	
Young drivers								
young drivers killed, per 100,000 15-24 year olds, per year	6.2	7.3	Dec 2011	9.3	10.1	7.7	9.3	7.3
young drivers (15-24 years) hospitalised >1d, per 100,000 15-24 year olds, per year	51	47	Sep 2011	74	73	65	55	
% youth believe will be stopped for non alcohol/speed traffic offences	-	44%	2010	39%	35%	41%	44%	
drivers on GDL at fault in fatal/serious crashes	60	273	Sep 2011	402	384	372	278	
young drivers (15-24 years) killed with excess alcohol, per 100,000 15-24 yr olds, per year	-	2.0	Sep 2011	2.8	3.7	3.0	3.7	
fatal and serious crashes involving 15-19 year old drivers	85	319	Sep 2011	477	450	442	379	
Speed								
% vehicles exceeding 100 km/h limits	-	29%	2010	29%	30%	29%	29%	
% vehicles exceeding 50 km/h limits	-	58%	2010	63%	64%	61%	58%	
fatal/serious speed-related crashes	91	442	Sep 2011	549	521	464	458	
% disagree probability being detected speeding is small	-	52%	2010	54%	54%	50%	52%	
mean rural speed (km/h)	-	96.2	2010	96.3	96.6	96.3	96.2	
mean urban speed (km/h)	-	52.0	2010	52.5	52.6	52.3	52.0	
Motorcycle safety								
ACC entitlement claims from motorcyclists	225	1027	Dec 2011	1312	1412	1262	1060	1027
motorcycle and moped riders killed, per 100,000 population	-	0.7	Dec 2011	1.0	1.2	1.1	1.1	0.7
% of motorcycles in crashes with non-current WoFs	32%	25%	Sep 2011	24%	28%	26%	27%	
motorcyclists hospitalised >1d, per 100,000 population, per year ⁽¹⁾	11.0	14.4	Sep 2011	18.4	18.0	15.6	15.2	
Roads and roadsides								
fatal or serious injuries in head-on, run off road and intersection crashes	354	1657	Sep 2011	2148	2022	1960	1827	
fatal and serious injury SH crashes on 2-star KiwiRAP rated roads (NEW)	-	n/a	-	-	300	-	-	
deaths or serious injuries in head-on crashes	73	318	Sep 2011	421	340	361	296	
deaths or serious injuries in run-off road crashes	121	629	Sep 2011	804	795	772	749	
deaths or serious injuries in intersection crashes	160	710	Sep 2011	923	887	827	784	
deaths or serious injuries in pedestrian/cyclist crashes	90	440	Sep 2011	477	500	418	437	

ROAD SAFETY OUTCOMES	LATEST FIGURES			LAST FIVE YEARS				
	latest quarter	latest 12 months	as at	2007	2008	2009	2010	2011
High risk drivers								
fatal or serious injury crashes with high risk driver⁽²⁾	50	216	Sep 2011	309	284	255	283	
% disqualified drivers detected driving	-	12%	2009		13%	12%		
% disqualified drivers detected driving (3+ times)	-	6%	2009		7%	6%		
disqualified or unlicensed drivers involved in fatal/serious crash	41	176	Sep 2011	249	241	203	238	
Light vehicles								
% of new vehicles with 5-star safety rating	61%	57%	Dec 2011	-	32%	51%	53%	57%
% of vehicles in fatal/serious crashes with non-current WOFs ⁽¹⁾	11%	12%	Sep 2011	14%	14%	12%	13%	
average (median) age of light vehicle fleet (years)	-	13.2	Dec 2011	12.1	12.2	12.6	12.9	13.2
Fatigue and distraction								
deaths or serious injuries in fatigue/distraction crashes	142	601	Sep 2011	702	685	706	675	
fatal/serious crashes with contributing fatigue/distraction	112	502	Sep 2011	545	563	567	551	
fatal/serious crashes meeting ATSB fatigue definition ⁽³⁾	28	105	Sep 2011	174	127	160	134	
Heavy vehicles								
fatal/serious injury HMV crashes where driver at fault	19	100	Sep 2011	169	124	111	104	
fatal/serious crashes involving HMVs	40	220	Sep 2011	308	277	226	212	
% of fatal/serious HMV crashes where HMV driver at fault	48%	45%	Sep 2011	54%	45%	49%	49%	
% of HMV drivers exceeding 90 km/h speed limit	-	45%	2010	40%	46%	43%	45%	
% of HMV drivers exceeding 50 km/h speed limit	-	44%	2010	49%	55%	48%	44%	
Walking and cycling								
pedestrians and cyclists hospitalised >1d, per 100,000 population, per year	9.6	10.1	Sep 2011	11.4	11.4	10.5	9.7	
pedestrians and cyclists killed, per 100,000 population, per year	1.0	0.9	Dec 2011	1.4	1.1	0.9	1.0	0.9
fatal and serious injuries to school age (5-17) cyclists and peds	19	92	Sep 2011	108	99	101	75	
% cyclists wearing helmets	-	93%	2011	92%	92%	92%	93%	93%
Older road users								
persons over 75 years killed in road crashes, per 100,000 75+ year olds, per year	12	12	Dec 2011	15	12	14	13	12
drivers over 75 years killed per 100,000 75+ year olds, per year	5	5.7	Dec 2011	7.9	5.7	9.2	7.0	5.7
drivers over 75 years, seriously injured, per 100,000 75+ year olds, per year	17	22	Sep 2011	24	26	29	22	
persons over 75 years, ACC claims, per 100,000 75+ year olds, per year	62	54	Dec 2011	96	99	96	75	54
Restraints								
vehicle occupant deaths where restraints not worn	19	74	Dec 2011	81	69	87	100	74
% of children (5-9 years) in booster seats (NEW)	-	n/a	-	-	-	-	-	
% front seat adult vehicle occupants restrained	-	96%	2011	95%	96%	95%	96%	96%
% child (0-4 years) vehicle occupants restrained	-	93%	2010	91%	90%	91%	93%	
% drivers think highly likely to be stopped for non-compliance	-	41%	2010	38%	40%	39%	41%	

(1) National headline measure not available at regional/district level, this measure used instead for local government region and police district charts

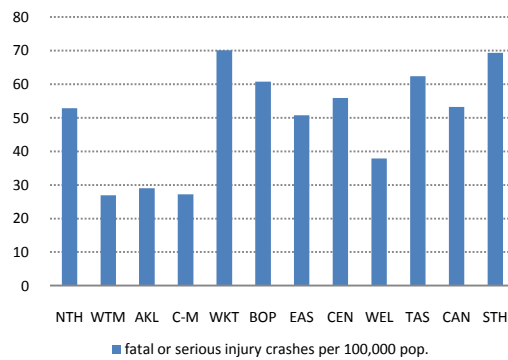
(2) High risk driver = disqualified, unlicensed, illegal street racing, evading enforcement

(3) Counts open road crashes with no alcohol, unlicensed drivers, or pedestrians, either head on on straight road, or single vehicle between 00:00-05:59h or 14:00-15:59h

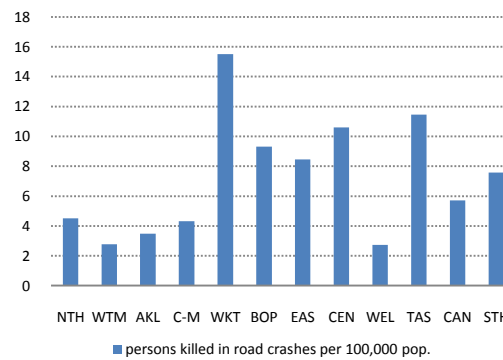
ROAD SAFETY OUTCOMES BY POLICE DISTRICT

Some alternative headline outcome measures are shown in the following charts and tables, in cases where the national measure is not available at a regional or police district level. In cases where the numbers involved are too small to give meaningful single year comparisons, some measures are shown on an averaged three-yearly basis.

Overall outcomes: crashes



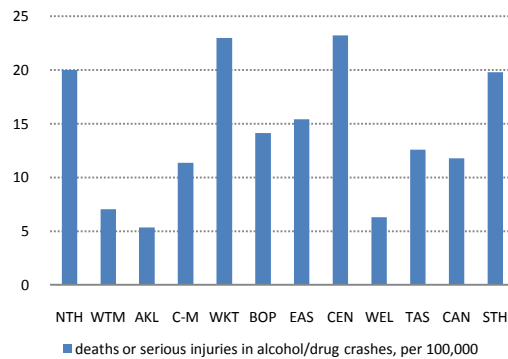
Overall outcomes: fatalities



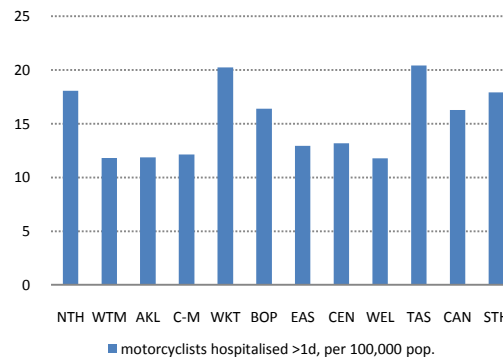
Overall outcomes: injuries



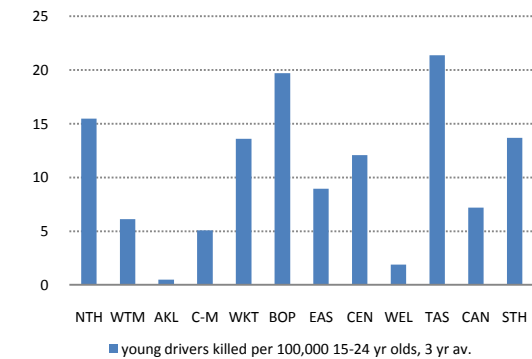
Alcohol and drugs

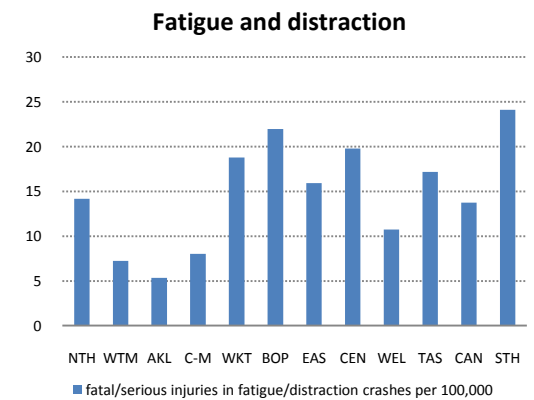
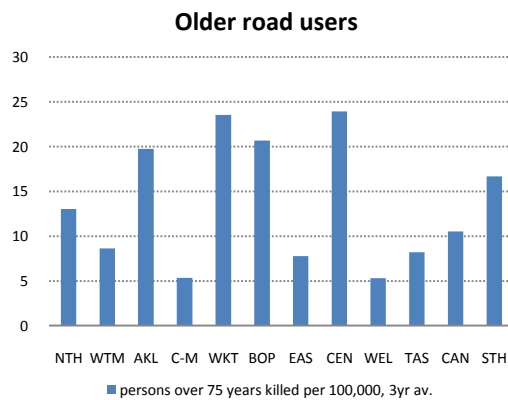
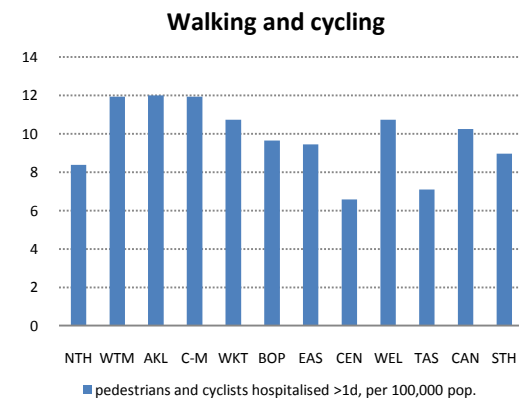
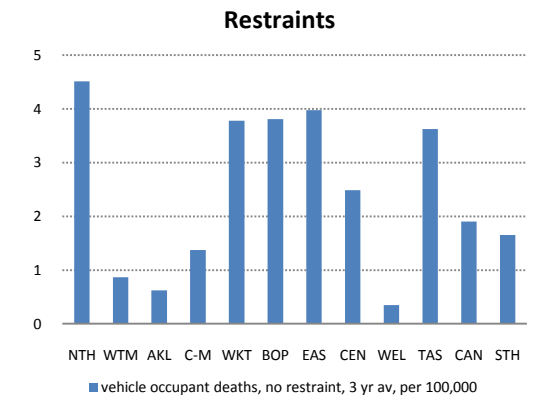
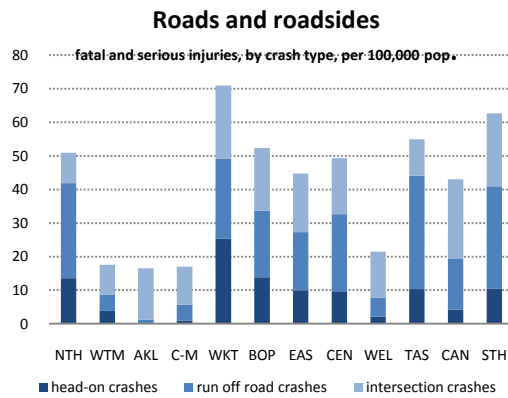
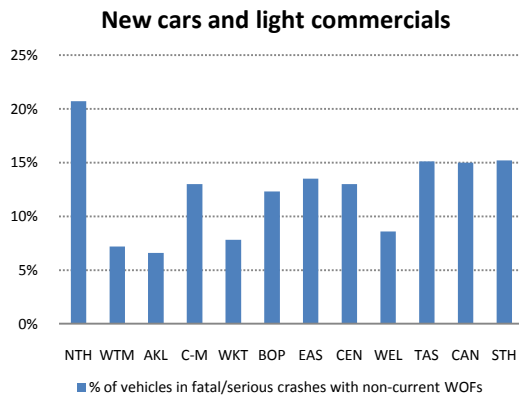
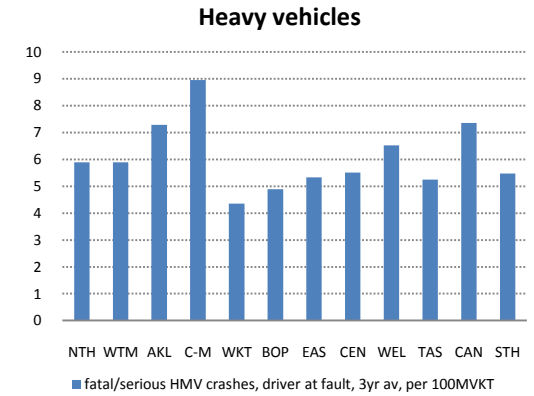
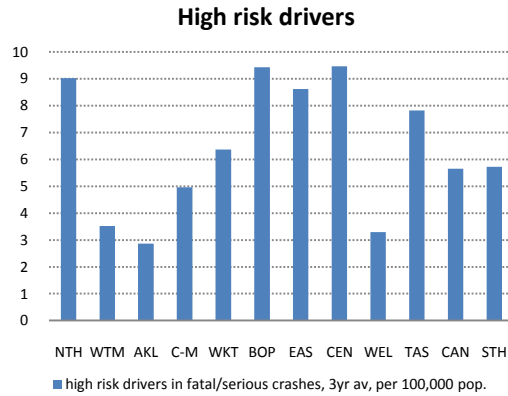
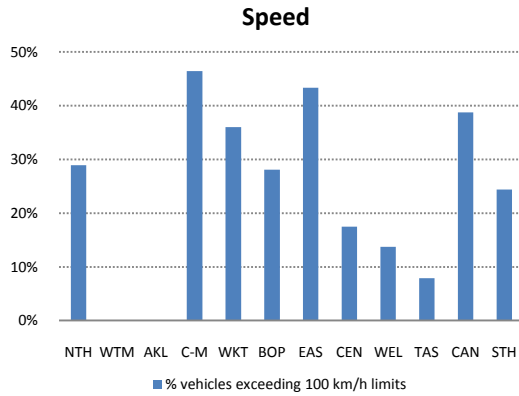


Motorcycle safety



Young driver safety

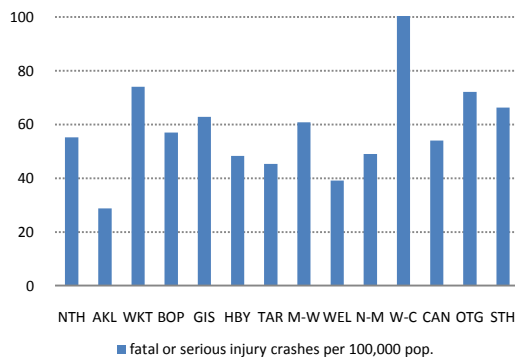




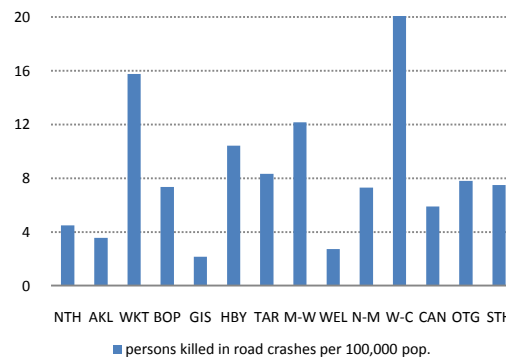
ROAD SAFETY OUTCOMES BY LOCAL GOVERNMENT REGION

Some alternative headline outcome measures are shown in the following charts and tables, in cases where the national measure is not available at a regional or police district level. In cases where the numbers involved are too small to give meaningful single year comparisons, some measures are shown on an averaged three-yearly basis.

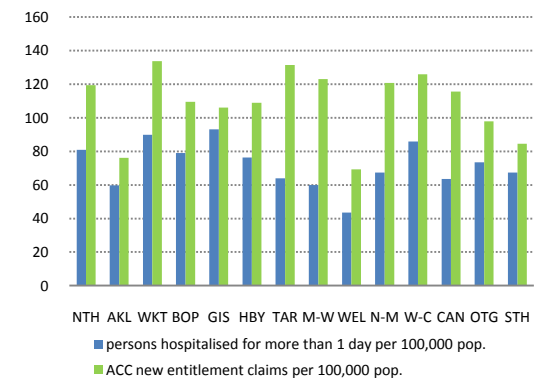
Overall outcomes: crashes



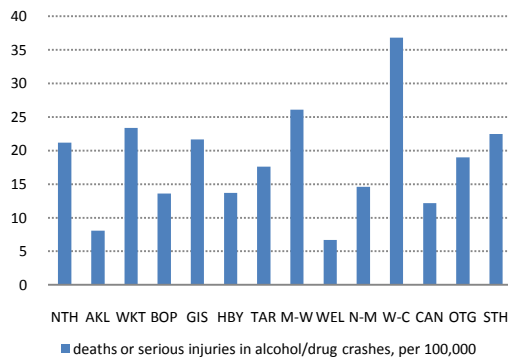
Overall outcomes: fatalities



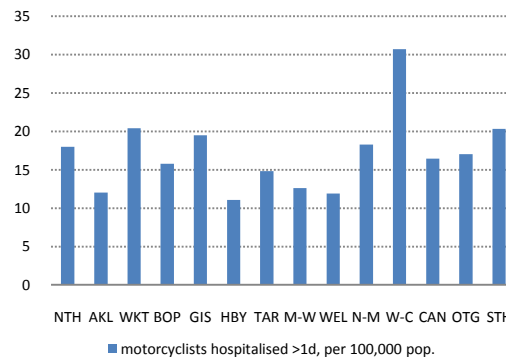
Overall outcomes: injuries



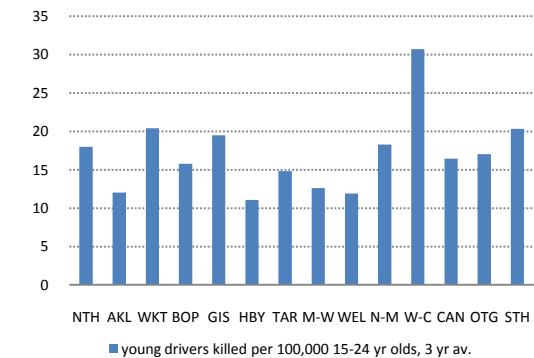
Alcohol and drugs

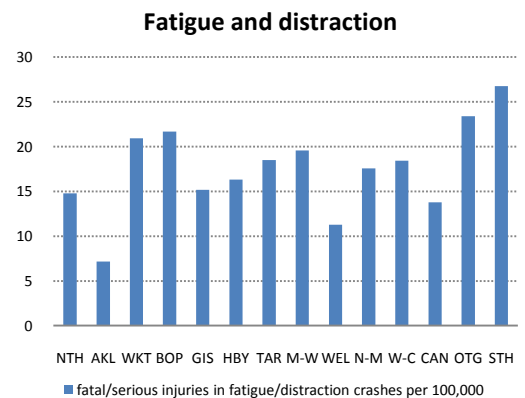
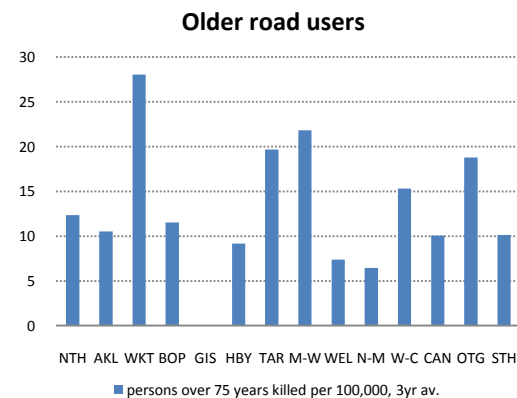
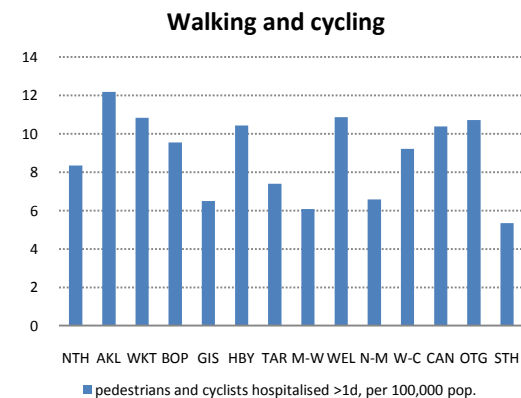
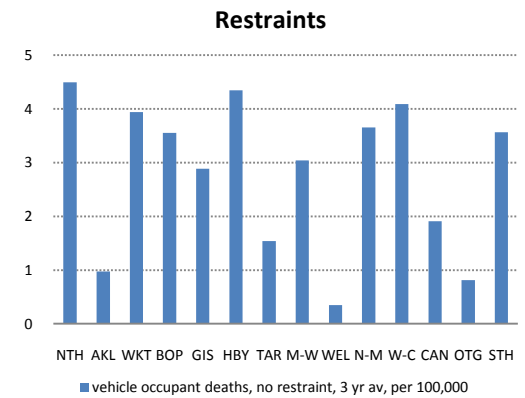
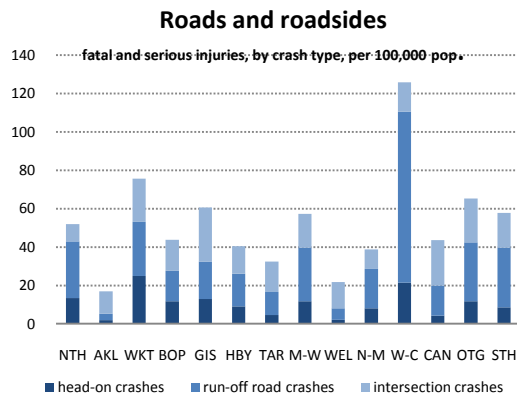
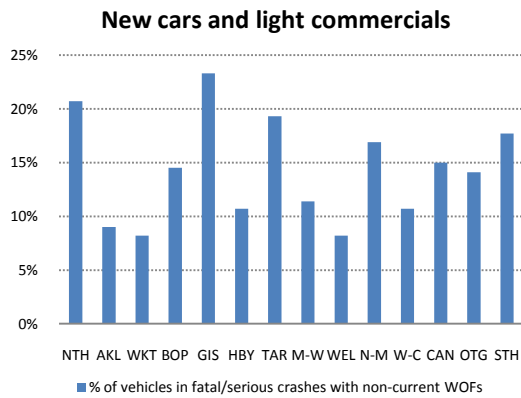
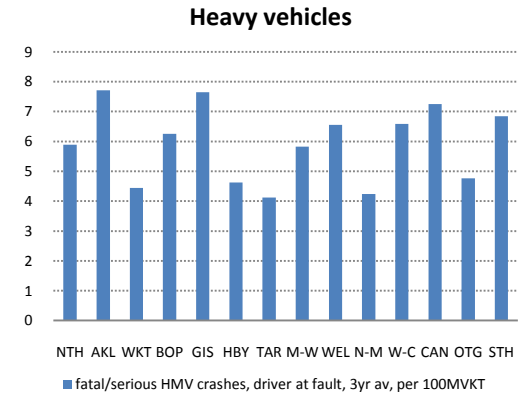
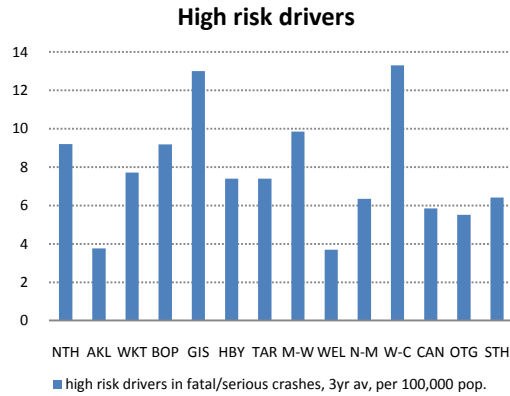
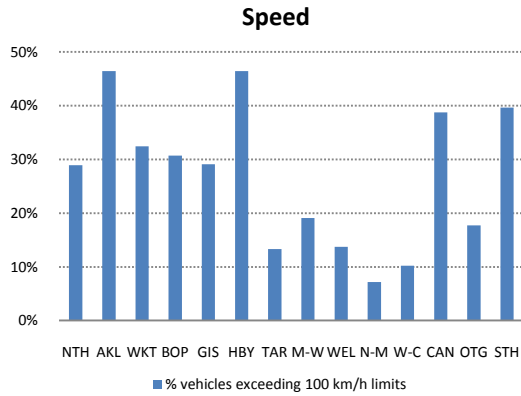


Motorcycle safety



Young driver safety





POLICE DISTRICT ROAD SAFETY OUTCOMES		NTH	WTM	AKL	C-M	WKT	BOP	EAS	CEN	WEL	TAS	CAN	STH		NZ
Overall	fatal or serious injury crashes per 100,000 population	53	27	29	27	70	61	51	56	38	62	53	69		47
	persons killed in road crashes, per 100,000 population	5	3	3	4	16	9	8	11	3	11	6	8		7
	persons hospitalised more than 1 day (>1d) , per 100000	81	58	59	60	89	80	80	60	43	70	63	71		65
	ACC new entitlement claims, per 100000 population	120	75	75	77	132	112	107	123	68	120	114	93		98
Alcohol	deaths or serious injuries in alc/drug crashes, per 100,000	20	7	5	11	23	14	15	23	6	13	12	20		13
Youth	young drivers killed, per 100,000 15-24 year old, 3-year average	15	6	0	5	14	20	9	12	2	21	7	14		8
Speed	% vehicles exceeding 100 km/h limits	29%			46%	36%	28%	43%	18%	14%	8%	39%	24%		28%
High risk	high risk drivers in fatal/serious crash, 3-year average per 100,000	9	4	3	5	6	9	9	9	3	8	6	6		6
Roads and roadsides	deaths + serious injuries in head-on crashes, per 100,000	14	4	0	1	25	14	10	9	2	10	4	11		7
	deaths + serious injuries, run-off road crashes, per 100,000	28	5	1	5	24	20	17	23	6	34	15	30		14
	deaths + serious injuries, intersection crashes, per 100,000	9	9	15	11	22	19	17	17	14	11	24	22		16
	deaths + serious injuries in ped/cyclist crashes, per 100,000	4	7	11	6	13	11	10	7	13	10	13	12		10
Motorcycles	motorcyclists hospitalised >1d, per 100,000 population	18	12	12	12	20	16	13	13	12	20	16	18		15
Light vehicles	% of vehicles in fatal/serious crashes with non-current WoFS	21%	7%	7%	13%	8%	12%	14%	13%	9%	15%	15%	15%		12%
Fatigue	fatal/serious injuries in fatigue/distraction crashes, per 100km	14	7	5	8	19	22	16	20	11	17	14	24		14
Heavy vehicles	fatal/serious hmv at fault crashes, 3yr avg, per 100m VKT	6	6	7	9	4	5	5	6	7	5	7	5		6
Walk/cycle	pedestrians and cyclists hospitalised >1d, per 100,000 population	8	12	12	12	11	10	9	7	11	7	10	9		10
Older users	persons over 75 years killed, per 100,000, 3yr avg.	13	9	20	5	24	21	8	24	5	8	11	17		14
Restraints	occupant deaths, restraints not worn, last 3 yrs, per 100,000	5	1	1	1	4	4	4	2	0	4	2	2		2

REGIONAL ROAD SAFETY OUTCOMES		NTH	AKL	WKT	BOP	GIS	HBV	TAR	M-W	WEL	N-M	W-C	CAN	OTG	STH
Overall	fatal or serious injury crashes per 100,000 population	55	29	74	57	63	48	45	61	39	49	123	54	72	66
	persons killed in road crashes, per 100,000 population	4	4	16	7	2	10	8	12	3	7	28	6	8	7
	persons hospitalised more than 1 day (>1d) , per 100,000	81	60	90	79	93	76	64	60	43	67	86	63	74	67
	ACC new entitlement claims, per 100,000 population	119	76	134	109	106	109	131	123	69	121	126	116	98	84
Alcohol	deaths or serious injuries in alcohol/drug crashes, per 100,000	21	8	23	14	22	14	18	26	7	15	37	12	19	22
Youth	young drivers killed, per 100,000 15-24 yr olds, 3 yr avg.	15	4	16	17	5	10	9	12	2	22	17	7	9	27
Speed	% vehicles exceeding 100 km/h limits	29%	46%	32%	31%	29%	46%	13%	19%	14%	7%	10%	39%	18%	40%
High risk	high risk drivers in fatal/serious crash, 3yr avg, per 100,000	9	4	8	9	13	7	7	10	4	6	13	6	6	6
Roads and roadsides	deaths + serious injuries in head-on crashes, per 100,000	13	2	25	12	13	9	5	12	2	8	21	4	12	9
	deaths + serious injuries, run-off road crashes, per 100,000	30	3	28	16	19	17	12	28	6	20	89	16	31	31
	deaths + serious injuries, intersection crashes, per 100,000	9	12	22	16	28	14	16	18	14	10	15	24	23	18
	deaths + serious injuries in ped/cyclist crashes, per 100,000	4	8	12	11	9	10	6	6	14	10	9	13	14	7
Motorcycles	motorcyclists hospitalised >1d, per 100,000 population	18	12	20	16	19	11	15	13	12	18	31	16	17	20
Light vehicles	% of vehicles in fatal/serious crashes with non-current WoFS	21%	9%	8%	15%	23%	11%	19%	11%	8%	17%	11%	15%	14%	18%
Fatigue	fatal/serious injuries in fatigue/distraction crashes, per 100km	15	7	21	22	15	16	19	20	11	18	18	14	23	27
Heavy vehicles	fatal/serious HMV at fault crashes, 3yr avg, per 100m VKT	6	8	4	6	8	5	4	6	7	4	7	7	5	7
Walk/cycle	pedestrians and cyclists hospitalised >1d, per 100,000 population	8	12	11	10	6	10	7	6	11	7	9	10	11	5
Older users	persons over 75 years killed, per 100,000, 3yr avg.	12	11	28	12	0	9	20	22	7	6	15	10	19	10
Restraints	occupant deaths, restraints not worn, last 3 yrs, per 100,000	5	1	4	4	3	4	2	3	0	4	4	2	1	4