

1 JULY TO 30 SEPTEMBER 2012

Q1 2012/13

ROAD SAFETY OUTCOMES



Supplement to the NZTA
Quarterly Report

This quarterly summary of road safety outcomes shows:

- an overall picture of fatal and serious casualties in road crashes over the past five years
- a set of intermediate outcome measures for each of the Safer Journeys areas of concern
- the trend in a representative headline measure over the past five years for each of the Safer Journeys areas of concern
- a new feature, trends in the five high priority *Safer Journeys* areas of concern over the past five years in each NZTA region
- Regional and Police District comparisons against a representative headline outcome measure for each of the *Safer Journeys* areas of concern.

Outcome measures are provided for the most recently available quarter, to September 2012 in some cases but usually to June 2012. Some measures are only available on an annual basis.

Not all outcome measures are available at Regional or Police District level, and alternative headline measures are presented in the relevant charts. In the regional and police district charts, some measures are shown on an averaged three-yearly basis where the numbers are too small to give meaningful single year comparisons.

Key results for the quarter are:

- overall road crash and casualty trends continue to move downwards, although **fatalities have levelled out to around 290** per year
- fatal and serious injury rates from **alcohol and drug related crashes** remain significantly lower, nearly 25% less, than in 2009 and 2010
- nearly **70% of new light vehicles** purchased in the last 12 months have 5-star occupant protection ratings
- overall casualty rates for **older road users** are similar to the general population, but highest in the Otago, Canterbury and Waikato regions.

More information ...

Published 2 November 2012

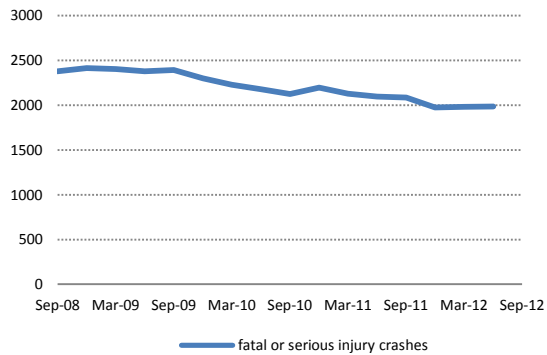
NZ Transport Agency
Private Bag 6995
Wellington 6141

This document is available on the NZTA's website at <http://www.nzta.govt.nz/resources/road-safety-outcomes/>.

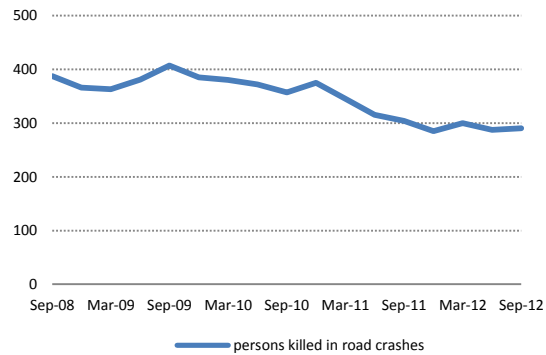
ROAD SAFETY OUTCOME TRENDS 2008-2012 (12-MONTH ROLLING FIGURES)

Road safety outcome measures in the following charts and tables are provided for the last five years, up to the most recently available quarter. The measures are obtained from the NZ Transport Agency's Crash Analysis System, ACC entitlement claims, Ministry of Health hospital discharge data, Ministry of Transport speed, restraint and public attitude surveys, Statistics NZ population data, and new vehicle registration figures.

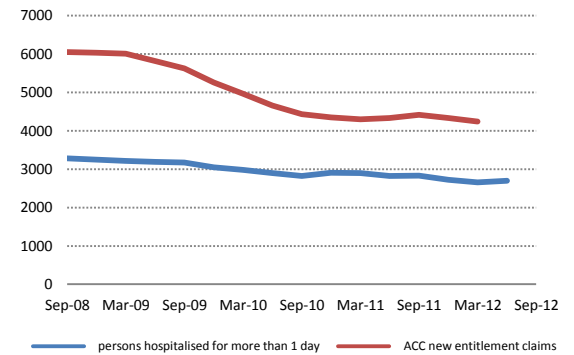
Overall outcomes: crashes



Overall outcomes: fatalities



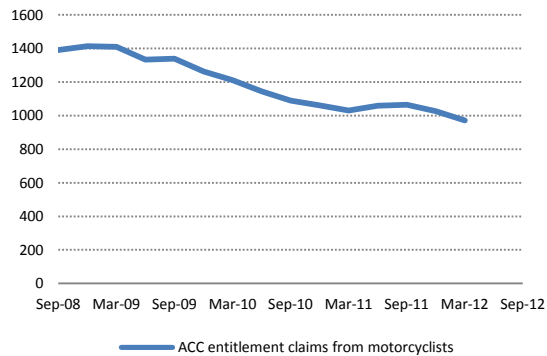
Overall outcomes: injuries



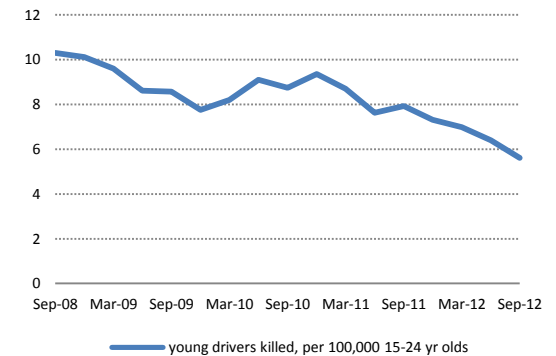
Alcohol and drugs

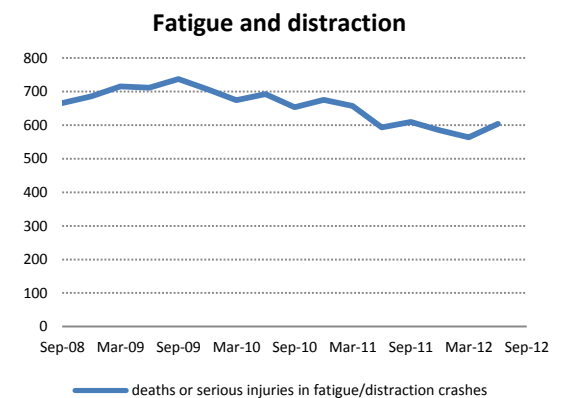
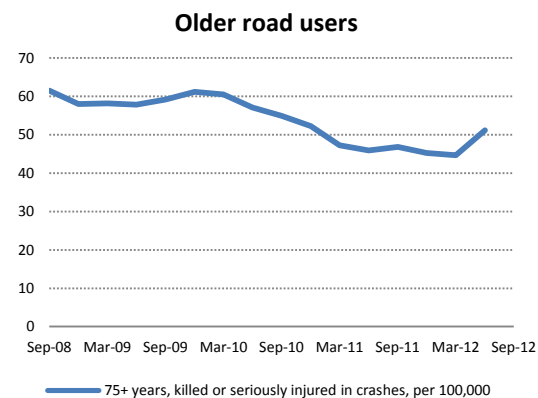
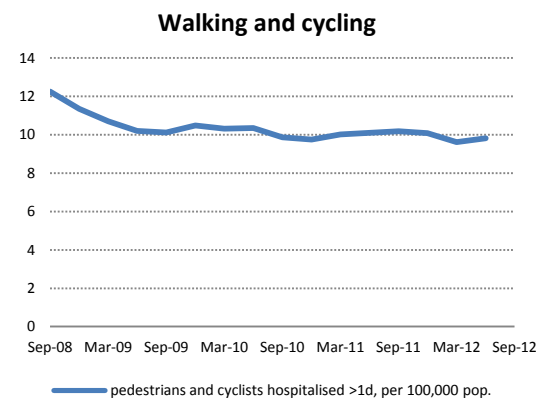
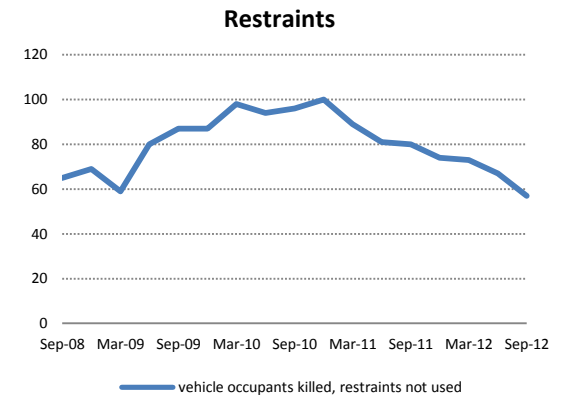
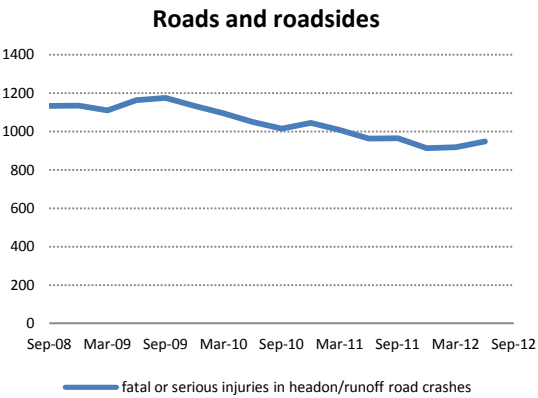
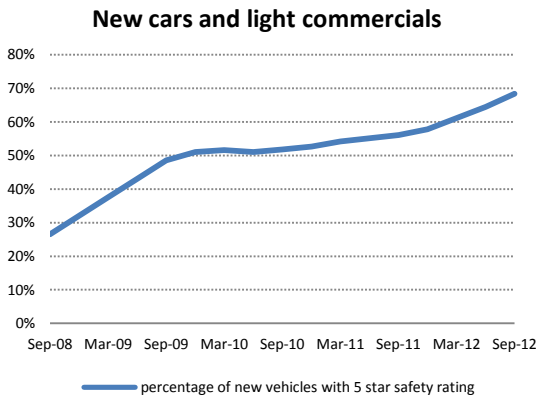
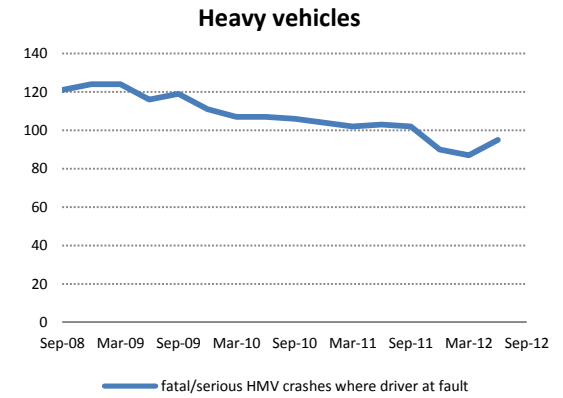
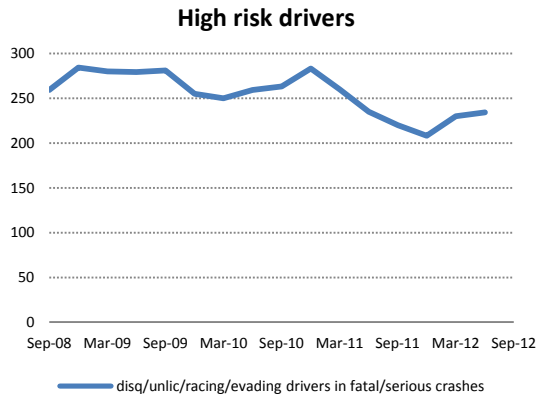
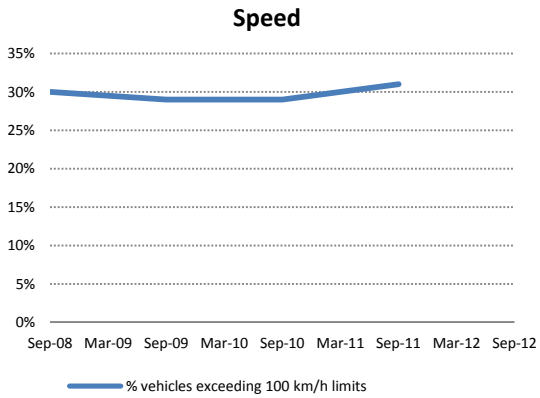


Motorcycle safety



Young driver safety





NATIONAL ROAD SAFETY OUTCOMES IN DETAIL	LATEST FIGURES			LAST FIVE YEARS				
	latest quarter	latest 12 months	as at	2007	2008	2009	2010	2011
Overall outcomes								
fatal or serious injury crashes	492	1983	Jun 2012	2475	2413	2298	2194	1975
persons killed in road crashes	71	290	Sep 2012	421	365	384	375	284
persons killed or seriously injured	571	2348	Jun 2012	3056	2878	2809	2663	2324
persons killed or seriously injured, per 100,000 population, per year	52	53	Jun 2012	72	67	65	61	53
persons killed or seriously injured, per 100 million vehicle km travelled	5.5	5.7	Jun 2012	7.6	7.1	6.9	6.4	5.6
persons hospitalised for more than 1 day (>1d)	689	2695	Jun 2012	3404	3240	3032	2908	2722
ACC new entitlement claims	1023	4236	Mar 2012	6062	6027	5252	4347	4330
Alcohol and drugs								
fatal or serious injuries in alcohol/drug crashes, per 100,000 population, per year	12.0	12.5	Jun 2012	16.2	16.2	16.3	15.7	12.5
drivers killed with excess alcohol	15	48	Jun 2012	65	59	66	67	45
% think high probability being stopped at CBT checkpoint	-	56%	2011	54%	51%	52%	56%	56%
% think high probability being tested for drugs (NEW)	-	n/a	-	-	-	-	-	-
Young drivers								
young drivers killed, per 100,000 15-24 year olds, per year	5.0	5.6	Sep 2012	9.3	10.1	7.7	9.3	7.3
young drivers (15-24 years) hospitalised >1d, per 100,000 15-24 year olds, per year	44	41	Jun 2011	74	73	65	55	47
% youth believe will be stopped for non alcohol/speed traffic offences	-	39%	2011	39%	35%	41%	44%	39%
drivers on GDL at fault in fatal/serious crashes	63	230	Jun 2012	402	384	372	278	255
young drivers (15-24 years) killed with excess alcohol, per 100,000 15-24 yr olds, per year	0.6	1.1	Jun 2011	2.8	3.7	3.0	3.7	2.3
fatal and serious crashes involving 15-19 year old drivers	70	286	Jun 2012	477	450	442	379	282
Speed								
% vehicles exceeding 100 km/h limits	-	31%	2011	29%	30%	29%	29%	31%
% vehicles exceeding 50 km/h limits	-	59%	2011	63%	64%	61%	58%	59%
fatal/serious speed-related crashes	78	381	Jun 2012	549	521	464	458	420
% disagree probability being detected speeding is small	-	51%	2011	54%	54%	50%	52%	51%
mean rural speed (km/h)	-	96.5	2011	96.3	96.6	96.3	96.2	96.5
mean urban speed (km/h)	-	52.0	2011	52.5	52.6	52.3	52.0	52.0
Motorcycle safety								
ACC entitlement claims from motorcyclists	248	970	Mar 2012	1312	1412	1262	1060	1025
motorcycle and moped riders killed, per 100,000 population, per year	0.9	0.8	Sep 2012	1.0	1.2	1.1	1.1	0.7
% of motorcycles in crashes with non-current WoFs	37%	26%	Jun 2012	24%	28%	26%	27%	26%
motorcyclists hospitalised >1d, per 100,000 population, per year ⁽¹⁾	13.0	13.5	Jun 2012	18.4	18.0	15.6	15.2	13.7
Roads and roadsides								
fatal or serious injuries in head-on* and run off road crashes	218	948	Jun 2012	1225	1135	1133	1045	912
fatal or serious injuries in head-on (*not overtaking) crashes, 80-100 km/h roads	53	318	Jun 2012	421	340	361	296	304
fatal or serious injuries in run-off road crashes, 80-100 km/h roads	165	630	Jun 2012	804	795	772	749	608
fatal or serious injuries in intersection crashes	177	707	Jun 2012	923	887	827	784	695
fatal or serious injuries in pedestrian/cyclist crashes	118	434	Jun 2012	477	500	418	437	417

NATIONAL ROAD SAFETY OUTCOMES IN DETAIL	LATEST FIGURES			LAST FIVE YEARS				
	latest quarter	latest 12 months	as at	2007	2008	2009	2010	2011
High risk drivers								
fatal or serious injury crashes with high risk driver⁽²⁾	45	234	Jun 2012	309	284	255	283	208
% disqualified drivers detected driving	-	12%	2009		13%	12%		
% disqualified drivers detected driving (3+ times)	-	6%	2009		7%	6%		
disqualified or unlicensed drivers involved in fatal/serious crash	39	199	Jun 2012	249	241	203	238	180
Light vehicles								
% of new vehicles with 5-star safety rating	73%	68%	Sep 2012	-	32%	51%	53%	58%
% of vehicles in fatal/serious crashes with non-current WOFs ⁽¹⁾	11%	12%	Jun 2012	14%	14%	12%	13%	12%
average (median) age of light vehicle fleet (years)	-	13.2	Dec 2011	12.1	12.2	12.6	12.9	13.2
Fatigue and distraction								
fatal or serious injuries in fatigue/distraction crashes	157	603	Jun 2012	702	685	706	675	584
fatal/serious crashes with contributing fatigue/distraction	130	503	Jun 2012	545	563	567	551	488
fatal/serious crashes meeting ATSB fatigue definition ⁽³⁾	37	117	Jun 2012	174	127	160	134	105
Heavy vehicles								
fatal/serious injury HMV crashes where driver at fault	32	95	Jun 2012	169	124	111	104	90
fatal/serious crashes involving HMVs	57	213	Jun 2012	308	277	226	212	209
% of fatal/serious HMV crashes where HMV driver at fault	56%	45%	Jun 2012	54%	45%	49%	49%	43%
% of HMV drivers exceeding 90 km/h speed limit	-	44%	2011	40%	46%	43%	45%	44%
% of HMV drivers exceeding 50 km/h speed limit	-	47%	2011	49%	55%	48%	44%	47%
Walking and cycling								
pedestrians and cyclists hospitalised >1d, per 100,000 population, per year	11.9	9.8	Jun 2012	11.4	11.4	10.5	9.7	10.1
pedestrians and cyclists killed, per 100,000 population, per year	0.9	0.9	Sep 2012	1.4	1.1	0.9	1.0	0.9
fatal or serious injuries to school age (5-17) cyclists and peds	24	87	Jun 2012	108	99	101	75	91
% cyclists wearing helmets	-	93%	2011	92%	92%	92%	93%	93%
Older road users								
persons 75+ yrs killed or seriously injured in crashes, per 100,000 75+ yr olds, per year	75	51	Jun 2012	62	58	61	52	45
persons 75+ years killed in road crashes	14	38	Sep 2012	37	30	36	34	32
drivers 75+ years, killed or seriously injured, per 100,000 75+ year olds, per year	37	27	Jun 2012	32	32	38	29	29
persons 75+ years, ACC claims, per 100,000 75+ year olds, per year	62	64	Mar 2012	96	99	96	75	68
Restraints								
vehicle occupant deaths where restraints not worn	12	57	Sep 2012	81	69	87	100	74
% of children (5-9 years) in booster seats (NEW)	-	17%	2011	-	-	-	-	17%
% front seat adult vehicle occupants restrained	-	96%	2012	95%	96%	95%	96%	96%
% child (0-4 years) vehicle occupants restrained	-	93%	2010	91%	90%	91%	93%	n/a
% drivers think highly likely to be stopped for non-compliance	-	40%	2011	38%	40%	39%	41%	40%

(1) National headline measure not available at regional/district level, this measure used instead for local government region and police district charts

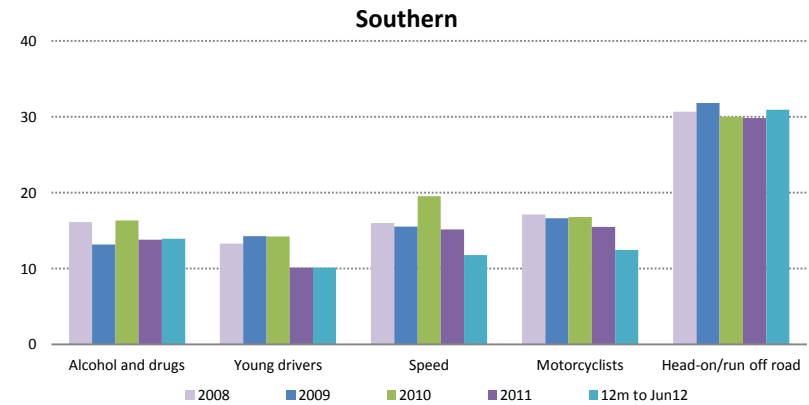
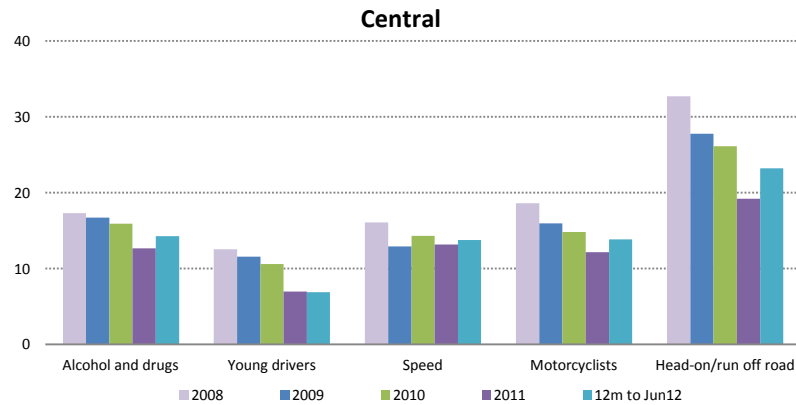
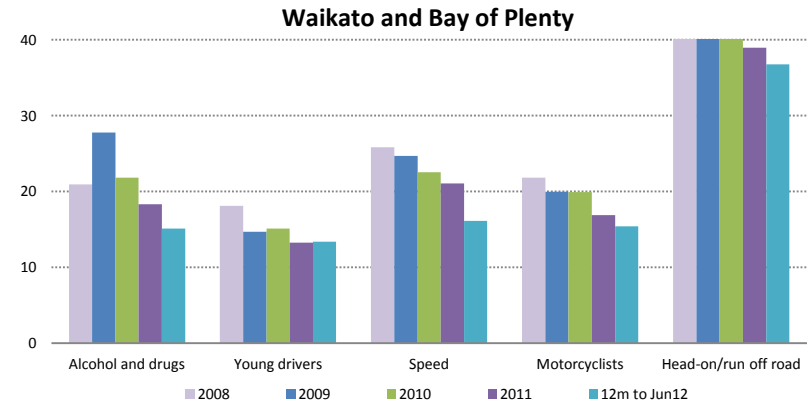
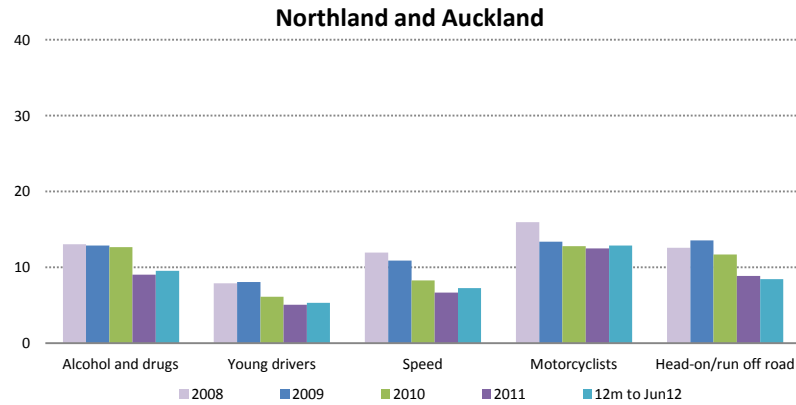
(2) High risk driver = disqualified, unlicensed, illegal street racing, evading enforcement

(3) Counts open road crashes with no alcohol, unlicensed drivers, or pedestrians, either head on on straight road, or single vehicle between 00:00-05:59h or 14:00-15:59h

ROAD SAFETY OUTCOMES BY NZTA REGION

The following charts and tables show trends over the past 5 years in each of the four NZTA regions for the high priority road safety concerns in *Safer Journeys*. The final bar in each set shows the value for the 12 months to the end of the latest available quarter, to allow full-year comparisons with the preceding annual values.

Fatal and serious injuries* in crashes, per 100,000 population

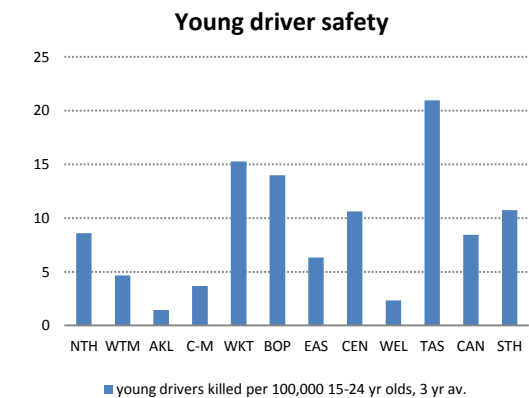
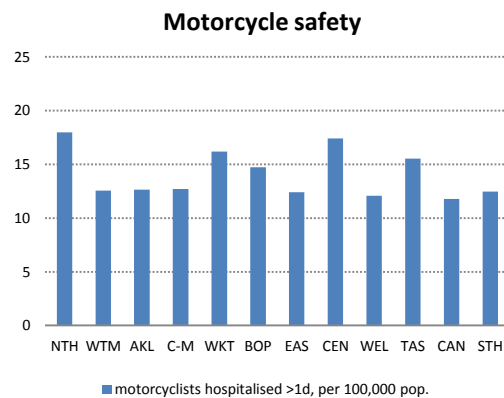
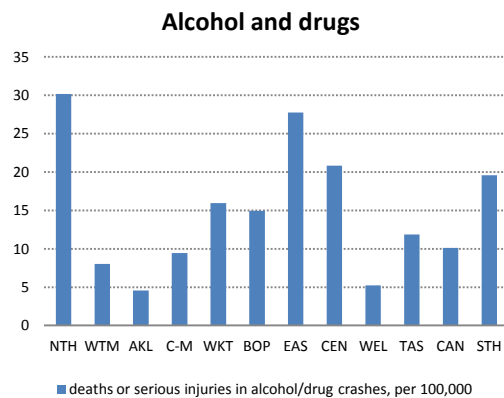
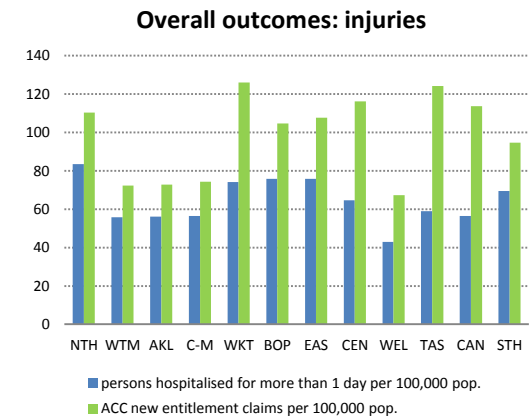
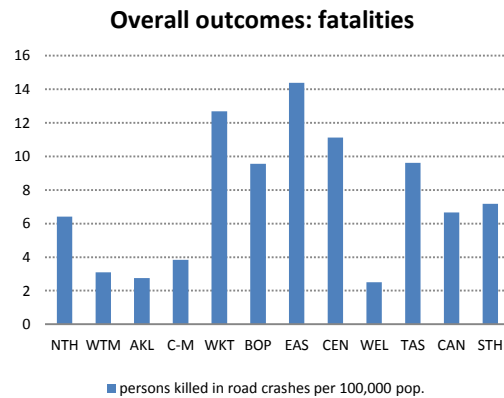
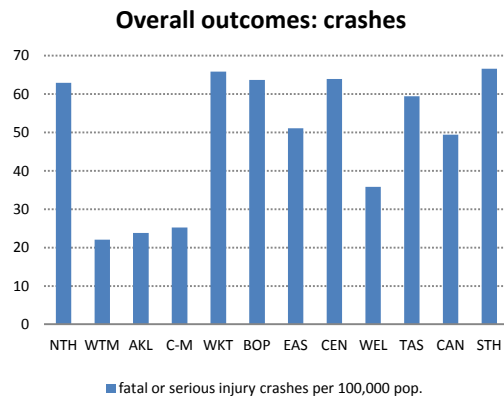


* Motorcycle casualties = hospitalisations for more than 1 day; head-on and run-off road crashes are open road crashes (80-100 km/h).

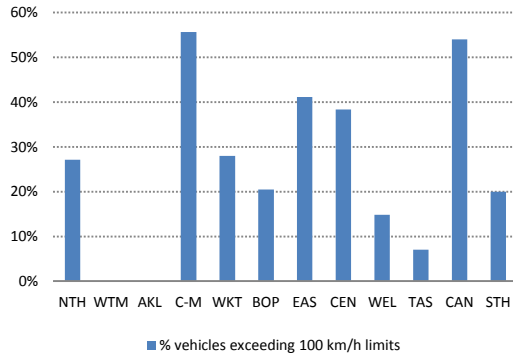
NZTA REGION OUTCOMES	LAST FIVE YEARS					
	2008	2009	2010	2011	latest 12 months, to Jun 2012	
Overall outcomes						
fatal or serious injuries in all crashes, per 100,000 population	NZ =	67	65	61	53	53
Northland and Auckland		45	44	39	33	31
Waikato and Bay of Plenty		92	90	80	86	79
Central region		75	64	63	50	57
Southern region		86	87	84	69	69
Alcohol and drugs						
fatal or serious injuries in alcohol/drug crashes, per 100,000 population	NZ =	16	16	16	13	13
Northland and Auckland		13	13	13	9	10
Waikato and Bay of Plenty		21	28	22	18	15
Central region		17	17	16	13	14
Southern region		16	13	16	14	14
Young drivers						
young drivers killed or seriously injured, per 100,000 total population	NZ =	13	11	10	8	8
Northland and Auckland		8	8	6	5	5
Waikato and Bay of Plenty		18	15	15	13	13
Central region		13	12	11	7	7
Southern region		13	14	14	10	10
young drivers killed or seriously injured, per 100,000 15-24 year olds	NZ =	87	78	71	54	57
Northland and Auckland		52	54	41	34	35
Waikato and Bay of Plenty		132	106	109	96	96
Central region		89	82	75	49	49
Southern region		90	96	96	68	68
Speed						
fatal or serious injuries in speed-related crashes, per 100,000 population	NZ =	16	15	14	12	11
Northland and Auckland		12	11	8	7	7
Waikato and Bay of Plenty		26	25	23	21	16
Central region		16	13	14	13	14
Southern region		16	16	20	15	12
Motorcycle safety						
motorcyclists hospitalised >1d from road crashes, per 100,000 population	NZ =	18	16	15	14	13
Northland and Auckland		16	13	13	12	13
Waikato and Bay of Plenty		22	20	20	17	15
Central region		19	16	15	12	14
Southern region		17	17	17	16	12
Roads and roadsides						
fatal or serious injuries in head-on* and run off road crashes, per 100,000 population	NZ =	26	26	24	21	21
Northland and Auckland		13	14	12	9	9
Waikato and Bay of Plenty		43	45	41	39	37
Central region		33	28	26	19	23
Southern region		31	32	30	30	31

ROAD SAFETY OUTCOMES BY POLICE DISTRICT

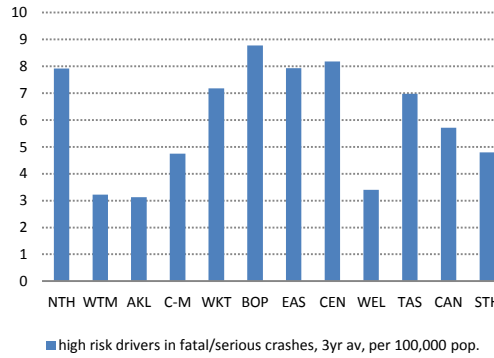
The following charts and tables show headline outcome measures for the 12 months to the end of the latest available quarter. Some alternative measures are shown if the national measure is not available at a regional or police district level. In cases where the numbers involved are too small to give meaningful single year comparisons, some measures are shown on an averaged three-yearly basis.



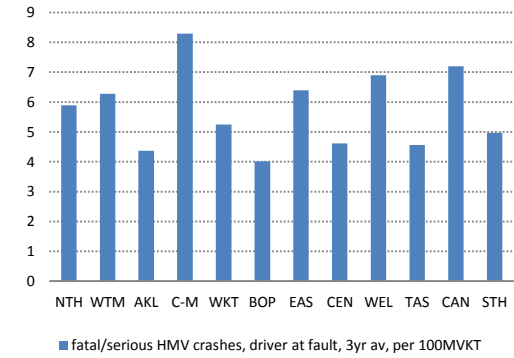
Speed



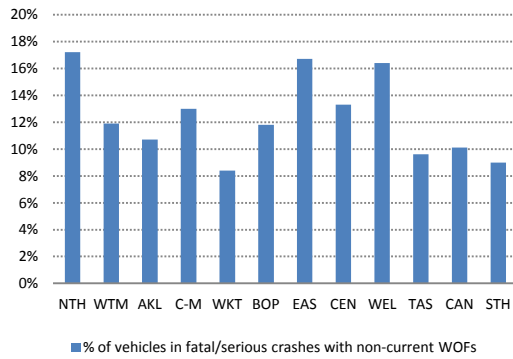
High risk drivers



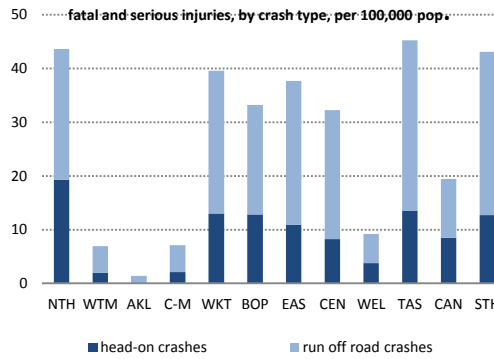
Heavy vehicles



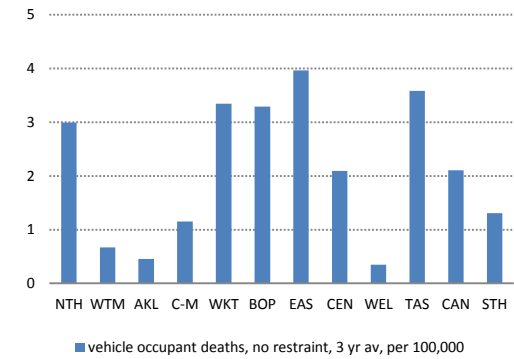
Light vehicles



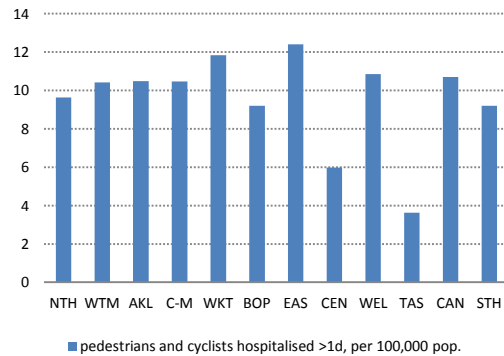
Roads and roadsides



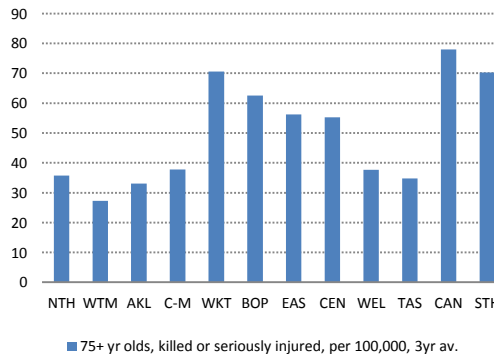
Restraints



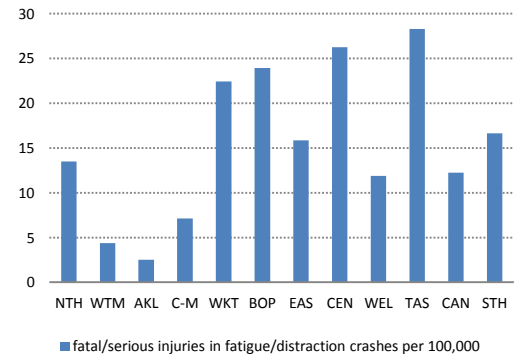
Walking and cycling



Older road users

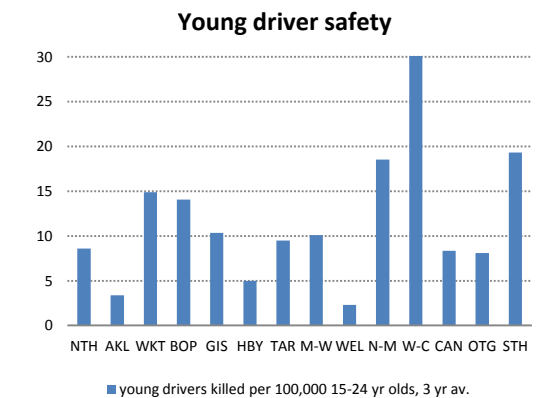
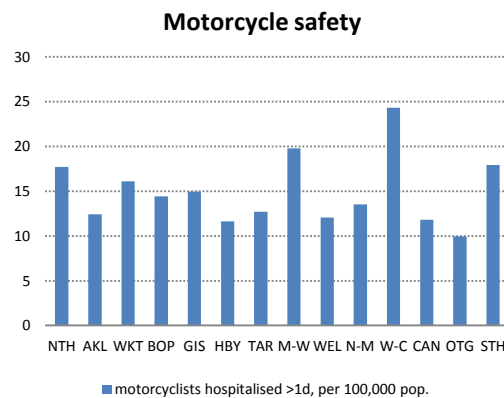
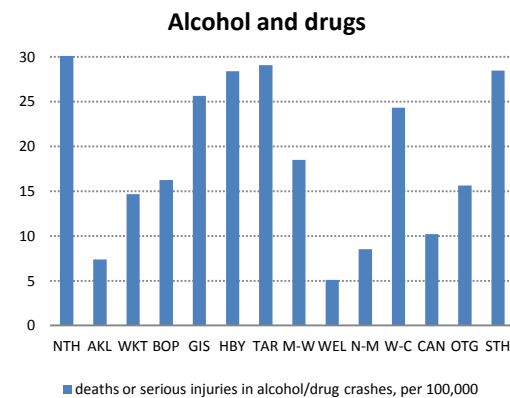
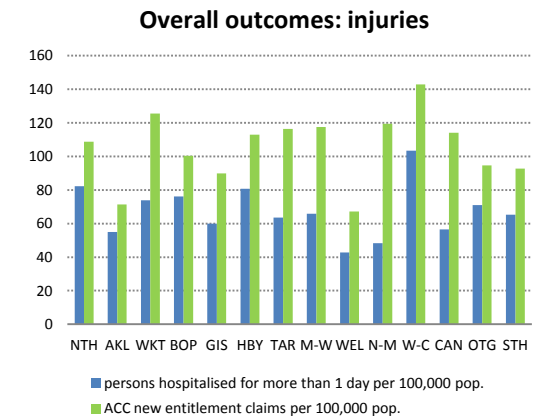
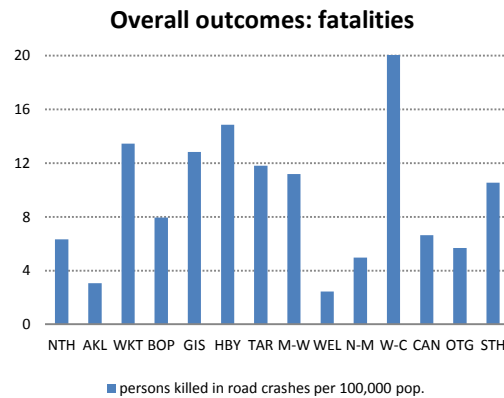
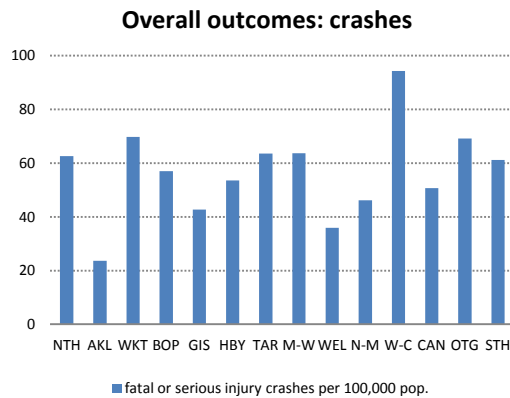


Fatigue and distraction

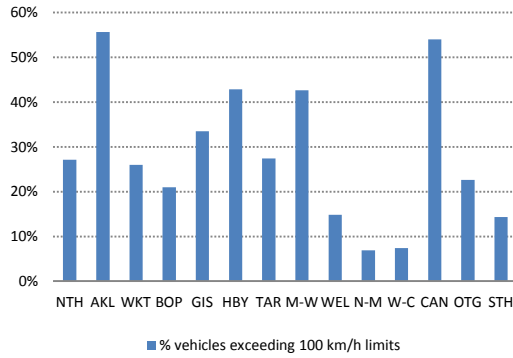


ROAD SAFETY OUTCOMES BY LOCAL GOVERNMENT REGION

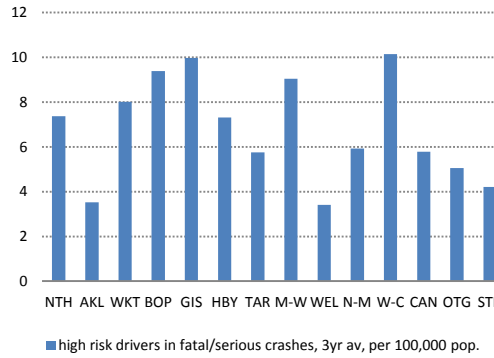
The following charts and tables show headline outcome measures for the 12 months to the end of the latest available quarter. Some alternative measures are shown if the national measure is not available at a regional or police district level. In cases where the numbers involved are too small to give meaningful single year comparisons, some measures are shown on an averaged three-yearly basis.



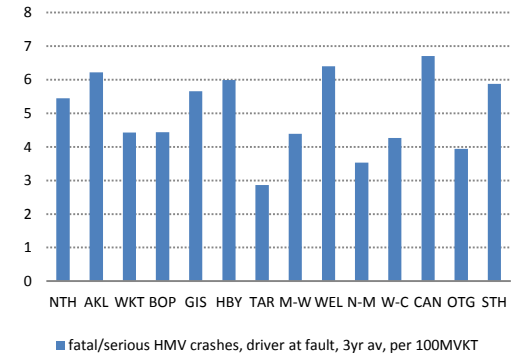
Speed



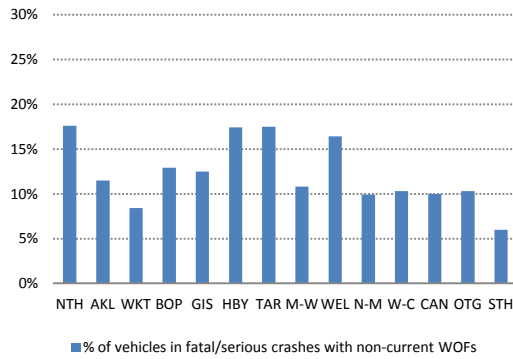
High risk drivers



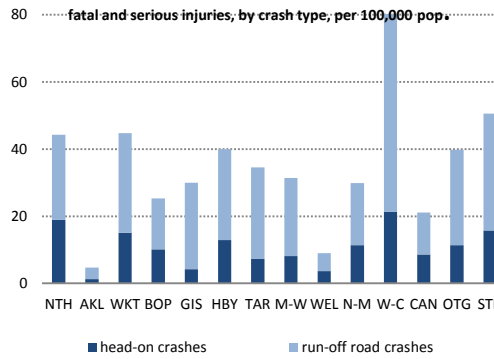
Heavy vehicles



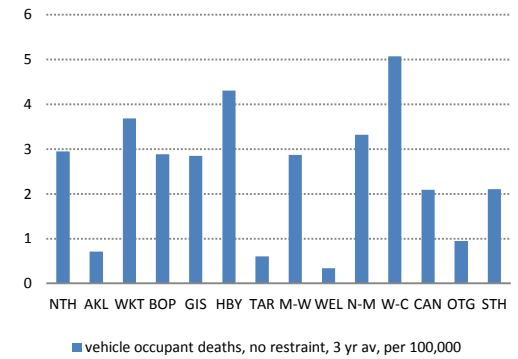
Light vehicles



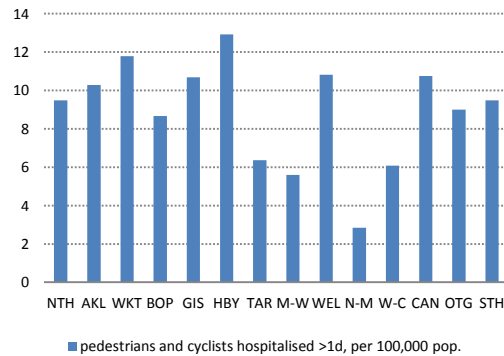
Roads and roadsides



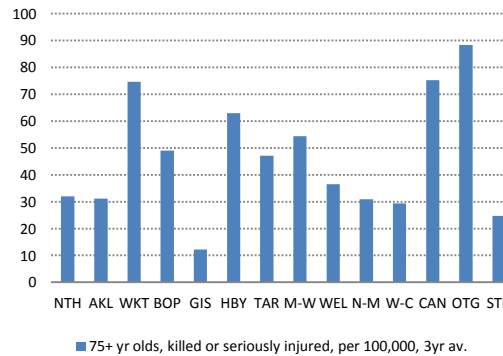
Restraints



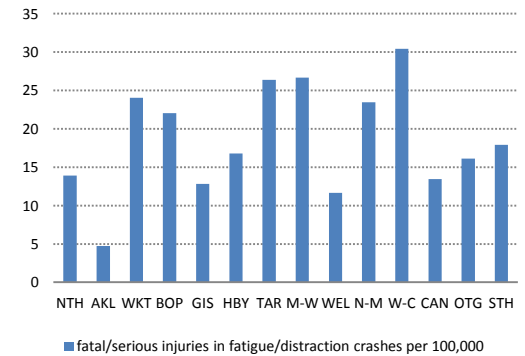
Walking and cycling



Older road users



Fatigue and distraction



POLICE DISTRICT ROAD SAFETY OUTCOMES		NTH	WTM	AKL	C-M	WKT	BOP	EAS	CEN	WEL	TAS	CAN	STH		NZ
Overall	fatal or serious injury crashes per 100,000 population	63	22	24	25	66	64	51	64	36	59	49	67		45
	persons killed in road crashes, per 100,000 population	6	3	3	4	13	10	14	11	3	10	7	7		7
	persons hospitalised more than 1 day (>1d) , per 100000 popn.	83	56	56	56	74	76	76	65	43	59	56	70		61
	ACC new entitlement claims, per 100000 population	110	72	73	74	126	105	108	116	67	124	114	95		95
Alcohol	deaths or serious injuries in alc/drug crashes, per 100,000 popn.	30	8	5	9	16	15	28	21	5	12	10	20		13
Youth	young drivers killed, per 100,000 15-24 year olds, 3-year average	9	5	1	4	15	14	6	11	2	21	8	11		13
Speed	% vehicles exceeding 100 km/h limits	27%			56%	28%	21%	41%	38%	15%	7%	54%	20%		31%
High risk	high risk drivers in fatal/serious crash, 3-year average per 100,000 popn.	8	3	3	5	7	9	8	8	3	7	6	5		5
Roads and roadsides	deaths + serious injuries in head-on crashes, per 100,000 popn.	19	2	0	2	13	13	11	8	4	14	8	13		7
	deaths + serious injuries, run-off road crashes, per 100,000 popn.	24	5	1	5	27	20	27	24	5	32	11	30		14
	deaths + serious injuries, intersection crashes, per 100,000 popn.	9	8	12	10	24	15	17	25	12	13	23	21		16
	deaths + serious injuries in ped/cyclist crashes, per 100,000 popn.	6	4	9	4	12	16	10	8	14	7	13	14		10
Motorcycles	motorcyclists hospitalised >1d, per 100,000 population	18	13	13	13	16	15	12	17	12	16	12	12		14
Light vehicles	% of vehicles in fatal/serious crashes with non-current WoFS	17%	12%	11%	13%	8%	12%	17%	13%	16%	10%	10%	9%		12%
Fatigue	fatal/serious injuries in fatigue/distraction crashes, per 100,000 popn.	13	4	3	7	22	24	16	26	12	28	12	17		14
Heavy vehicles	fatal/serious hmv at fault crashes, 3yr avg, per 100m VKT	6	6	4	8	5	4	6	5	7	5	7	5		5
Walk/cycle	pedestrians and cyclists hospitalised >1d, per 100,000 population	10	10	10	10	12	9	12	6	11	4	11	9		10
Older users	persons 75+ years killed or seriously injured, per 100,000, 3yr avg.	36	27	33	38	71	63	56	55	38	35	78	70		50
Restraints	occupant deaths, restraints not worn, last 3 yrs, per 100,000 popn.	3.0	0.7	0.5	1.2	3.3	3.3	4.0	2.1	0.3	3.6	2.1	1.3		2

REGIONAL ROAD SAFETY OUTCOMES		NTH	AKL	WKT	BOP	GIS	HBV	TAR	M-W	WEL	N-M	W-C	CAN	OTG	STH
Overall	fatal or serious injury crashes per 100,000 population	63	24	70	57	43	54	64	64	36	46	94	51	69	61
	persons killed in road crashes, per 100,000 population	6	3	13	8	13	15	12	11	2	5	30	7	6	11
	persons hospitalised more than 1 day (>1d) , per 100,000 popn.	82	55	74	76	60	81	64	66	43	48	103	57	71	65
	ACC new entitlement claims, per 100,000 population	109	72	126	100	90	113	117	117	67	120	143	114	95	93
Alcohol	deaths or serious injuries in alcohol/drug crashes, per 100,000 popn.	30	7	15	16	26	28	29	18	5	9	24	10	16	28
Youth	young drivers killed, per 100,000 15-24 year olds, 3-year average	9	3	15	14	10	5	9	10	2	19	34	8	8	19
Speed	% vehicles exceeding 100 km/h limits	27%	56%	26%	21%	34%	43%	27%	43%	15%	7%	7%	54%	23%	14%
High risk	high risk drivers in fatal/serious crash, 3yr avg, per 100,000 popn.	7	4	8	9	10	7	6	9	3	6	10	6	5	4
Roads and roadsides	deaths + serious injuries in head-on crashes, per 100,000 popn.	19	1	15	10	4	13	7	8	4	11	21	9	11	16
	deaths + serious injuries, run-off road crashes, per 100,000 popn.	25	3	30	15	26	27	27	23	5	18	64	13	28	35
	deaths + serious injuries, intersection crashes, per 100,000 popn.	9	10	23	14	26	14	26	25	12	15	3	23	20	21
	deaths + serious injuries in ped/cyclist crashes, per 100,000 popn.	7	6	12	15	9	11	7	8	14	6	9	13	16	9
Motorcycles	motorcyclists hospitalised >1d, per 100,000 population	18	12	16	14	15	12	13	20	12	14	24	12	10	18
Light vehicles	% of vehicles in fatal/serious crashes with non-current WoFS	18%	12%	8%	13%	13%	17%	18%	11%	16%	10%	10%	10%	10%	6%
Fatigue	fatal/serious injuries in fatigue/distraction crashes, per 100,000 popn.	14	5	24	22	13	17	26	27	12	23	30	13	16	18
Heavy vehicles	fatal/serious HMV at fault crashes, 3yr avg, per 100m VKT	5	6	4	4	6	6	3	4	6	4	4	7	4	6
Walk/cycle	pedestrians and cyclists hospitalised >1d, per 100,000 population	9	10	12	9	11	13	6	6	11	3	6	11	9	9
Older users	persons 75+ years killed or seriously injured, per 100,000, 3yr avg.	32	31	75	49	12	63	47	54	36	31	29	75	88	25
Restraints	occupant deaths, restraints not worn, last 3 yrs, per 100,000 popn.	2.9	0.7	3.7	2.9	2.8	4.3	0.6	2.9	0.3	3.3	5.1	2.1	0.9	2.1