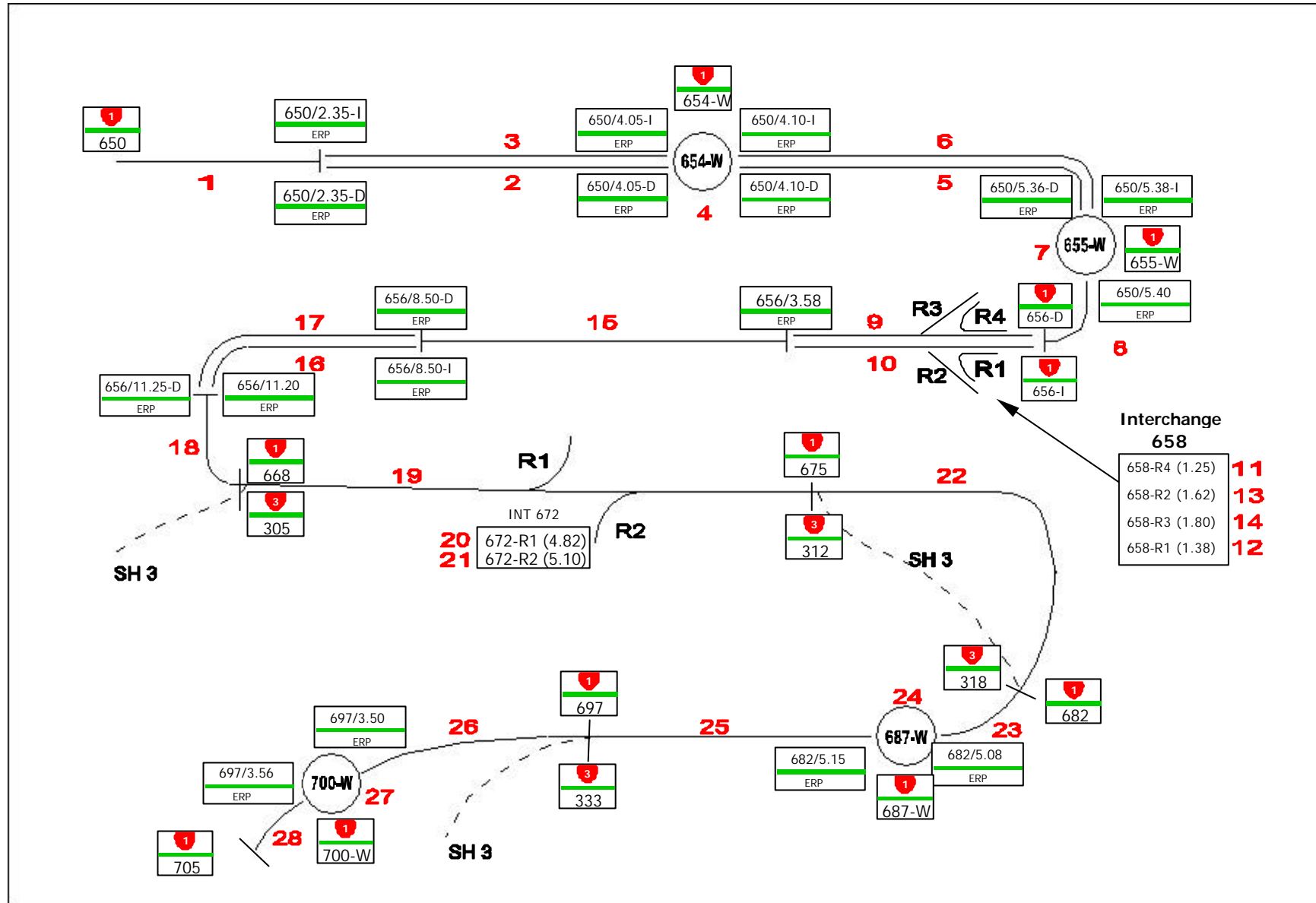


## **Appendix C: Route Position Nomenclature**

**C-1 Road Layout and LR Signs Example**

**C-2 Example of Naming Convention**



**Example of Naming Convention for “road name” Field (from Figure 3)**

Element	RP Recorded in Field <sup>1</sup>	Element Name <sup>2</sup>	RAMM Roadname <sup>3</sup>	
1	01N-0650/x.xx	01N-0650	01N-0650	
2	01N-0650/x.xx-D	01N-0650/2.35-D	01N-0650/02.35-D	*The 'I' and 'D' remain at the end of the description for sorting purposes
3	01N-0650/x.xx-I	01N-0650/2.35-I	01N-0650/02.35-I	
4	01N-0654-W/x.xx	01N-0654-W	01N-0650/04.05-W654	
5	01N-0650/x.xx-D	01N-0650/4.10-D	01N-0650/04.10-D	*Note that the 'W' indicates a roundabout (number 654) which is 4.05km from RS 650
6	01N-0650/x.xx-I	01N-0650/4.10-I	01N-0650/04.10-I	
7	01N-0655-W/x.xx	01N-0655-W	01N-0650/05.38-W655	
8	01N-0650/x.xx	01N-0650/5.40	01N-0650/05.40	
9	01N-0656/x.xx-D	01N-0656-D	01N-0656/0.00-D	*Note that leading zeros are required for RS stations on divided carriageways for sorting purposes
10	01N-0656/x.xx-I	01N-0656-I	01N-0656/0.00-I	
11	01N-0658-R4/x.xx	01N-0658-R4	01N-0656/01.25-X658-R4-ON	*Note that the 'X' indicates an Interchange (number 658).
12	01N-0658-R1/x.xx	01N-0658-R1	01N-0656/01.38-X658-R1-OFF	*Note that R1 intersects RS 656 at 1.38km
13	01N-0658-R2/x.xx	01N-0658-R2	01N-0656/01.62-X658-R2-ON	
14	01N-0658-R3/x.xx	01N-0658-R3	01N-0656/01.80-X658-R3-OFF	
15	01N-0656/x.xx	01N-0656/3.58	01N-0656/03.58	
16	01N-0656/x.xx-D	01N-0656/8.50-D	01N-0656/08.50-D	
17	01N-0656/x.xx-I	01N-0656/8.50-I	01N-0656/08.50-I	
18	01N-0656/x.xx	01N-0656/11.20	01N-0656/11.20	
19	01N-0668/x.xx	01N-0668	01N-0668-C003	*Note that this link is 'C'ommon with SH 003
20	01N-0672-R1/x.xx	01N-0672-R1	01N-0668-C003/04.82-X672-R1-OFF	
21	01N-0672-R2/x.xx	01N-0672-R2	01N-0668-C003/05.10-X672-R2-OFF	
22	01N-0675/x.xx	01N-0675	01N-0675	
23	01N-0682/x.xx	01N-0682	01N-0682-C003	
24	01N-0687-W/x.xx	01N-0687-W	01N-0682-C003/05.08-W687	
25	01N-0682/x.xx	01N-0682/5.15	01N-0682-C003/05.15	
26	01N-0697/x.xx	01N-0697	01N-0697	
27	01N-0700-W/x.xx	01N-0700-W	01N-0697/03.50-W700	
28	01N-0697/x.xx	01N-0697/3.56	01N-0697/03.56	

1. This is how someone in the field will record an RP. All of the information is contained on the sign and the x.xx is the metres from yellow square (RSL, RMP, RND).

2. This is the proposed unique name for the element once RAMM has been updated to account for sorting.

3. This is the RAMM roadname for the element which incorporates key requirements for “sorting” and “describing” the element. It is a description field designed for use in RAMM and will be superseded in 2-3 years when all forms and reports are modified to sort independently of roadname