

# GIVE WAY ACTIVITY CARDS

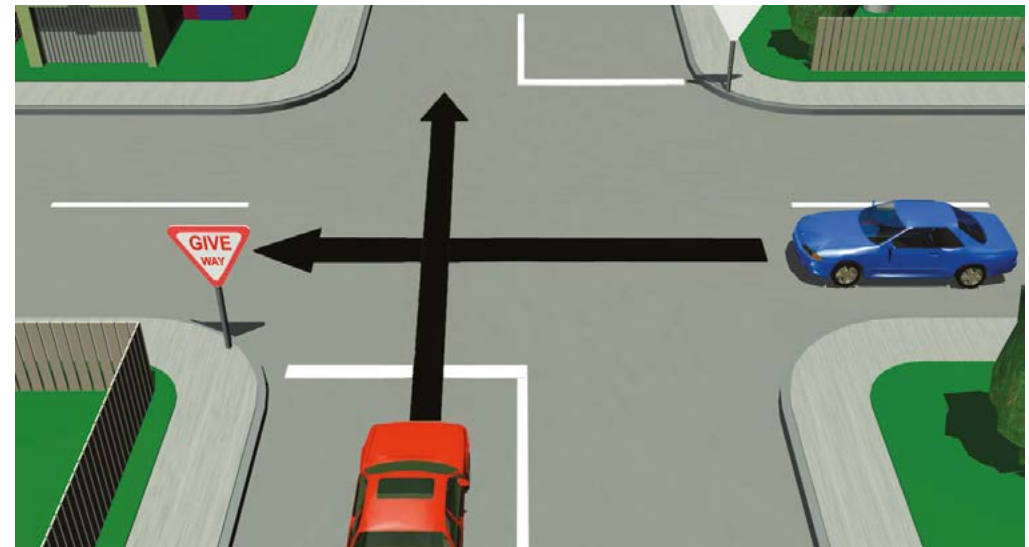
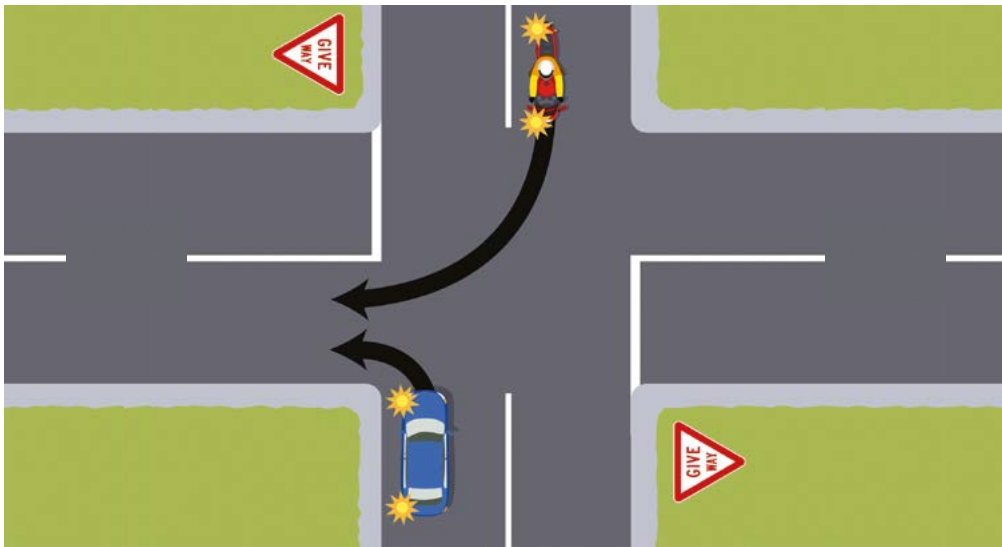
These activity cards have been developed as an educational tool for tutors to use in teaching the give way rules.

They can be used in two main ways:

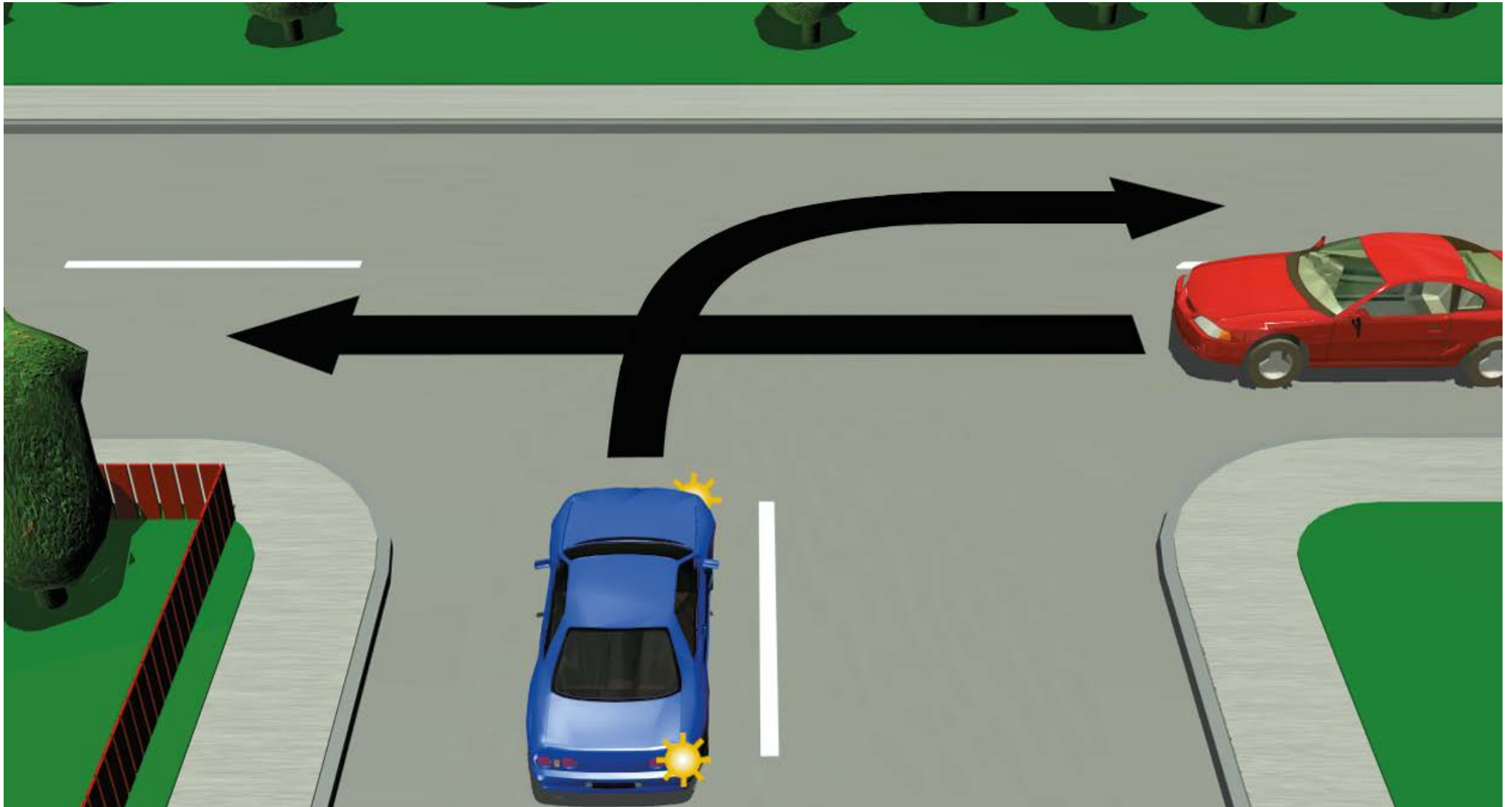
- Students working in pairs can use this resource to test their knowledge of the give way rules.
- They can be used by a tutor with a small group to explain the give way rules.

The questions and correct answers are provided on the back of the activity cards.

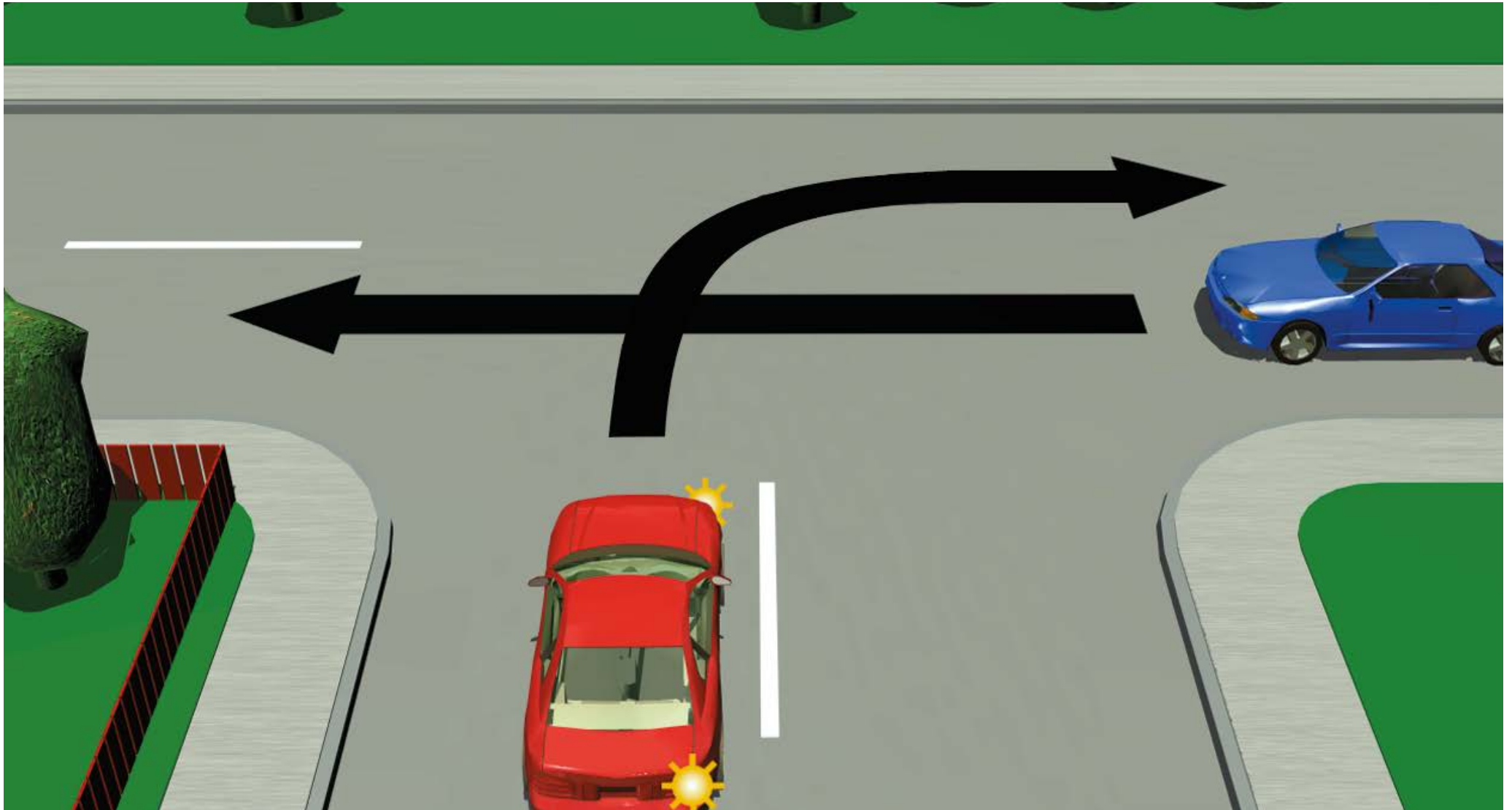
For more details on the give way rules, refer to *The official New Zealand road code* or [www.nzta.govt.nz/resources/roadcode/index.html](http://www.nzta.govt.nz/resources/roadcode/index.html).



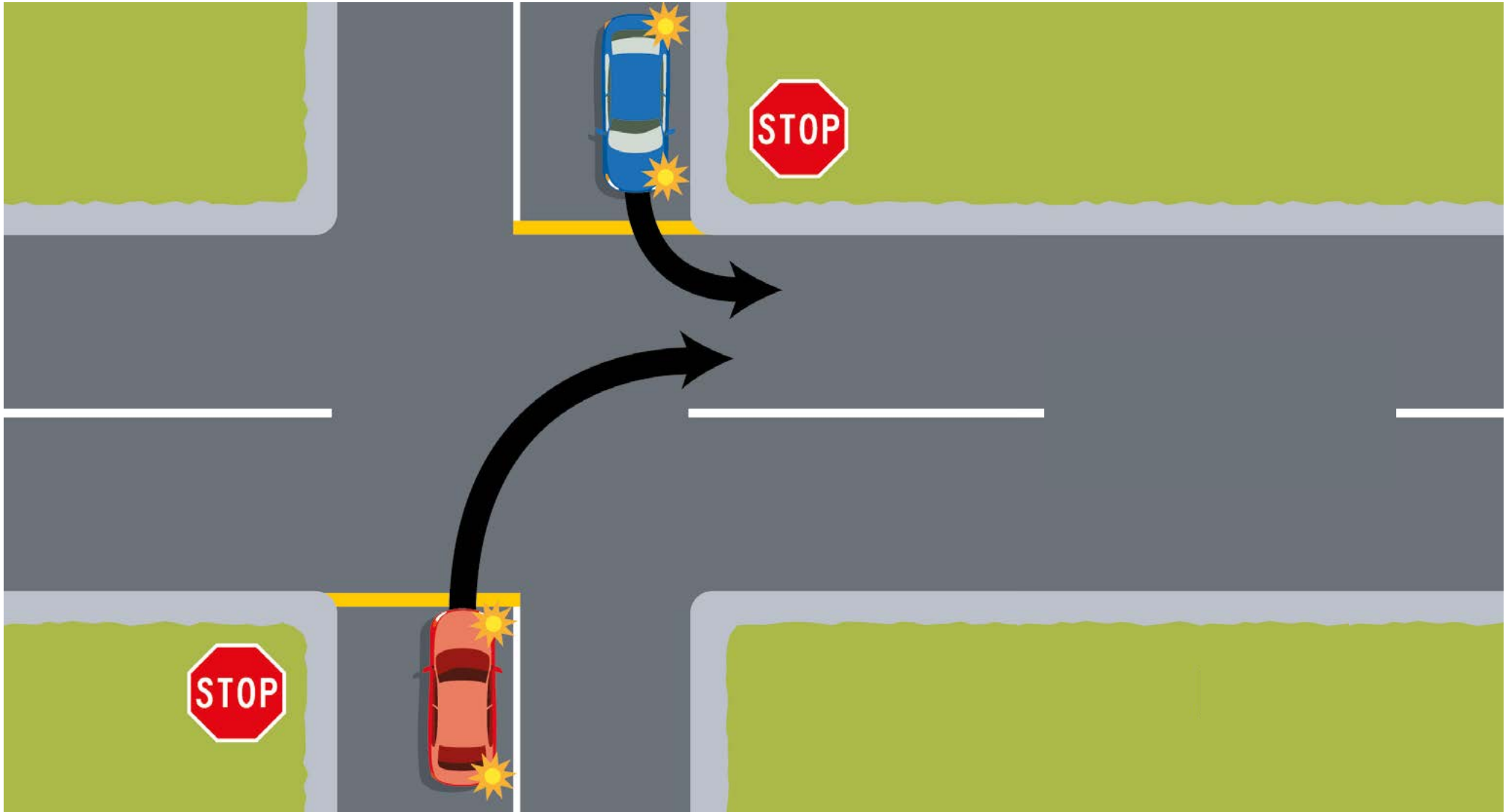






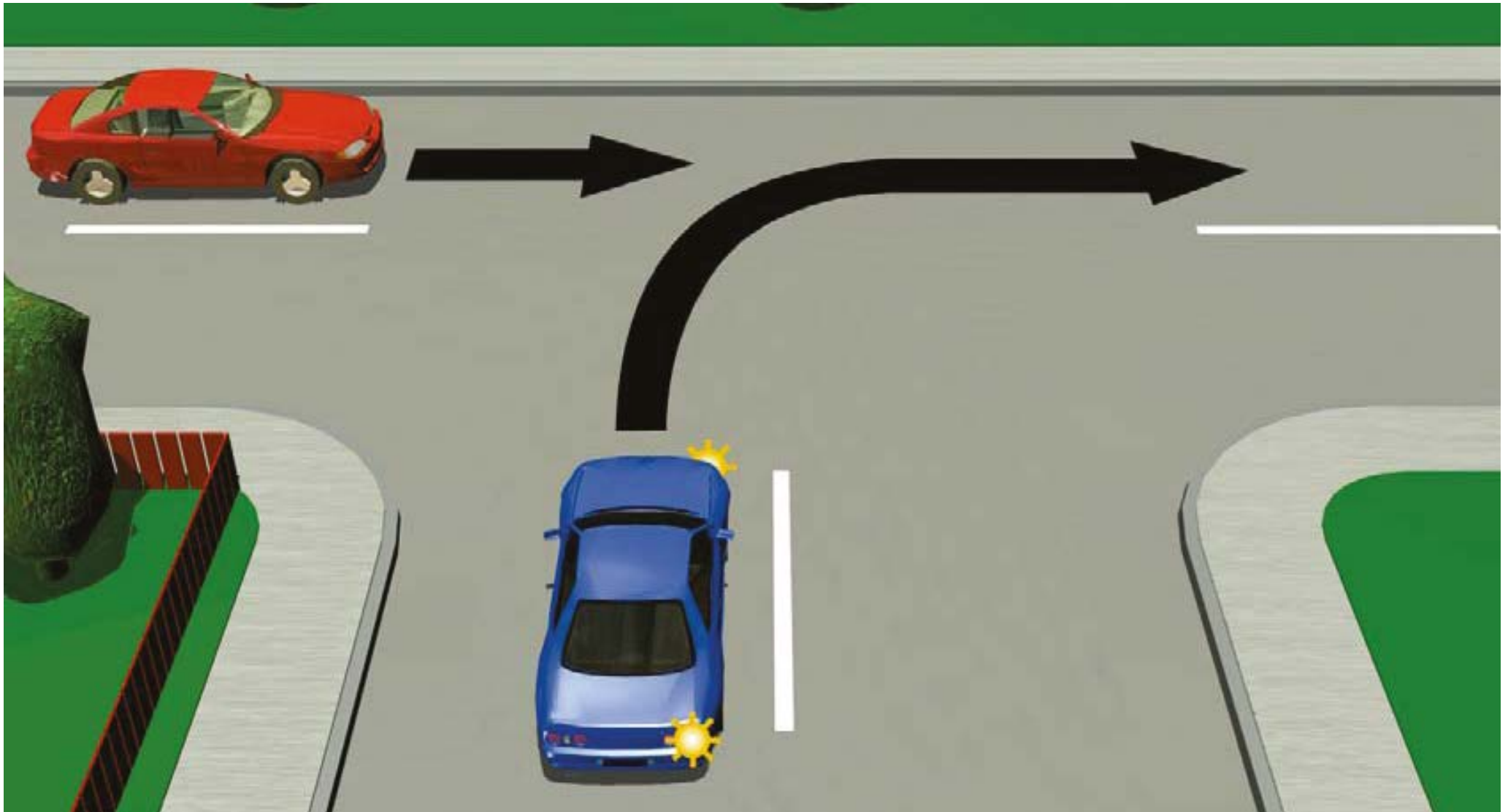




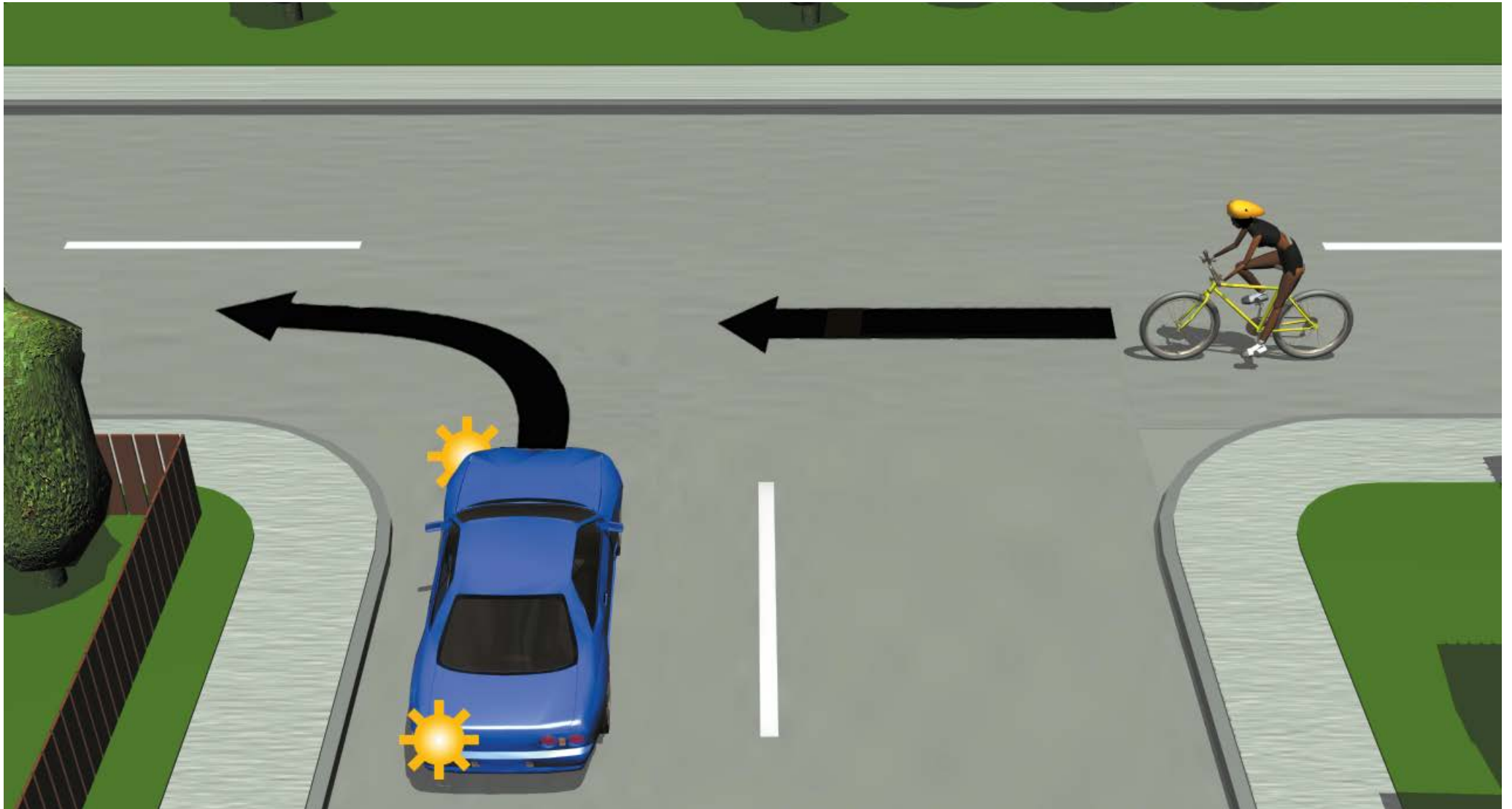




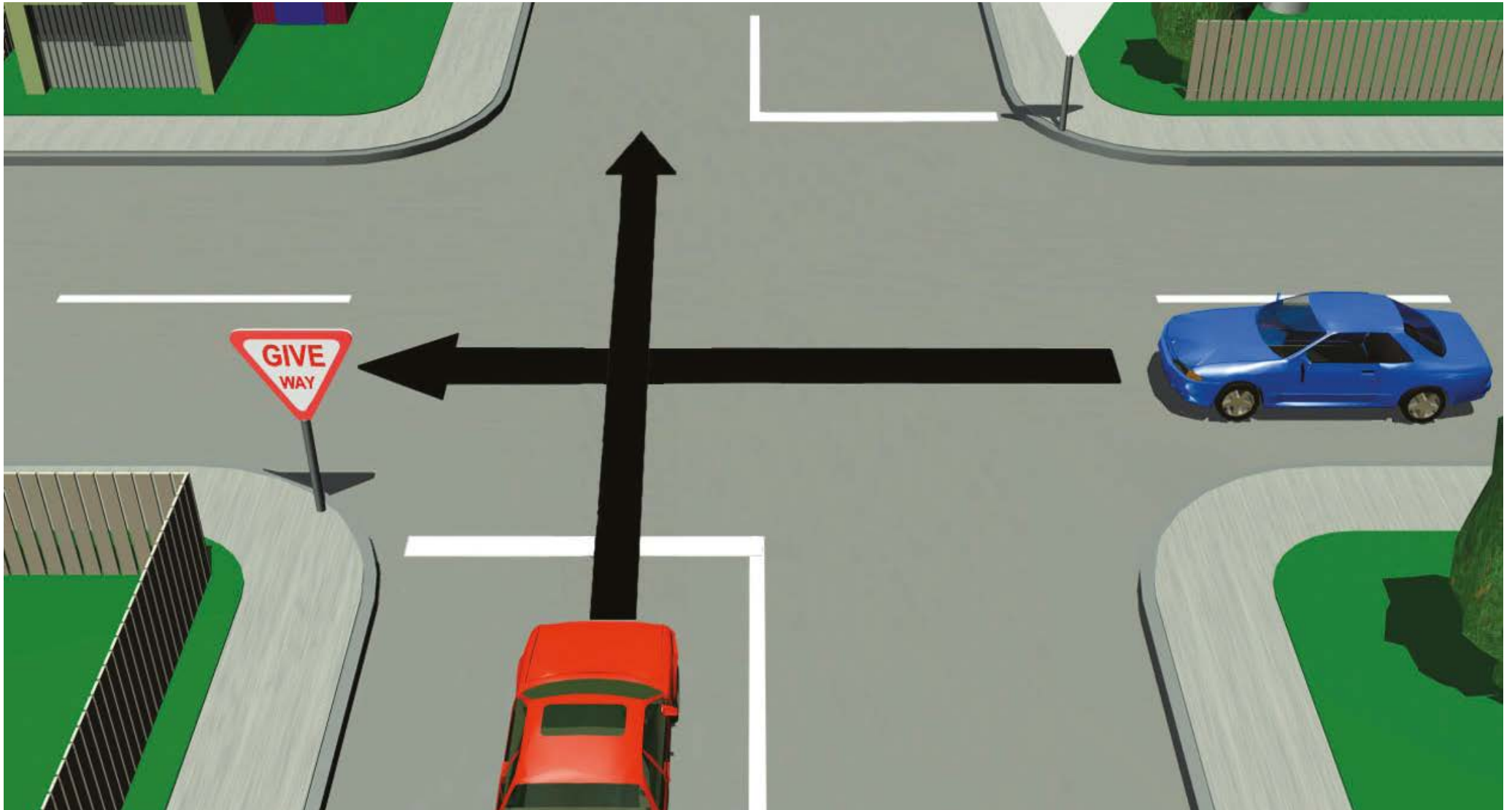




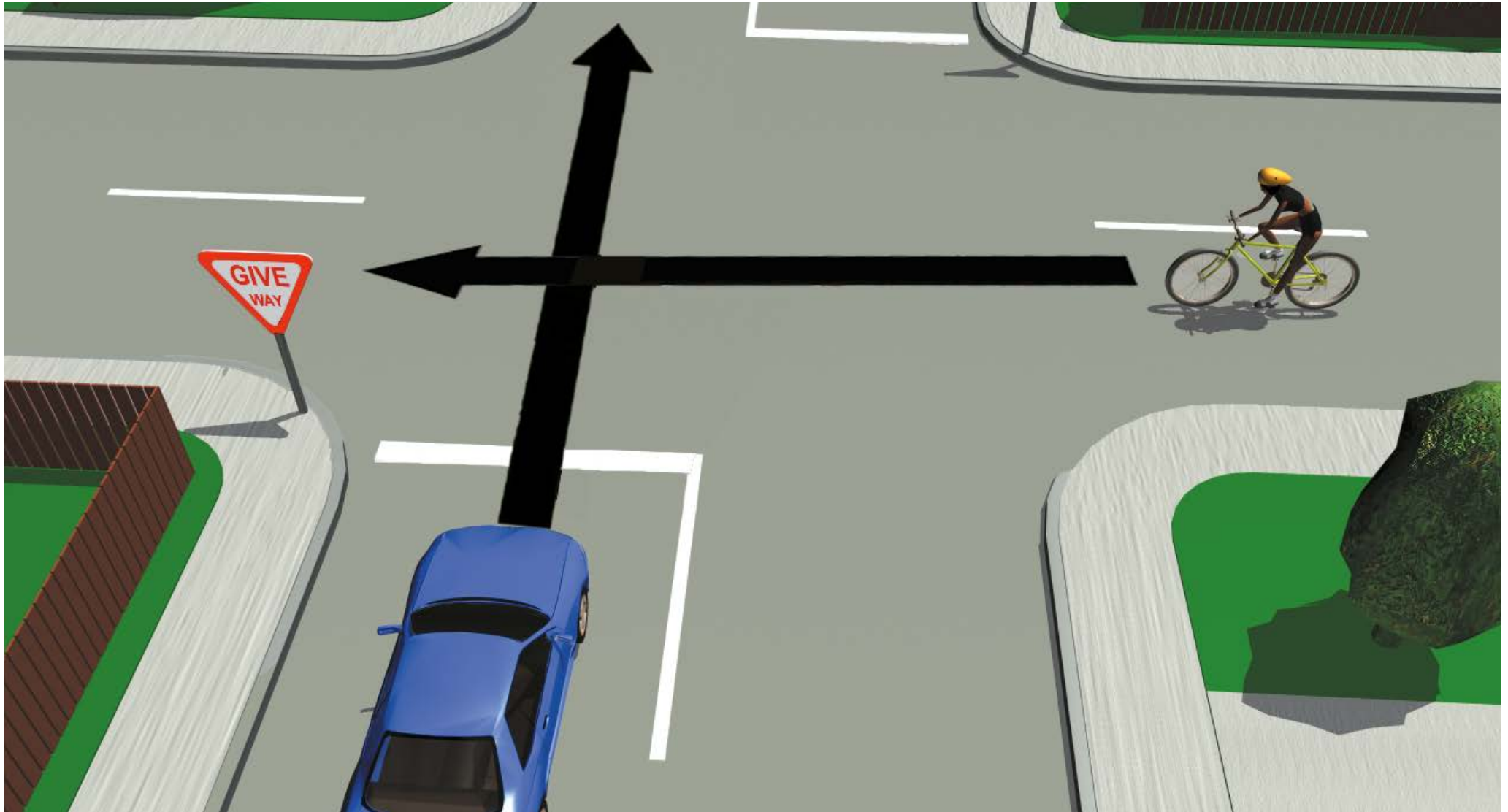






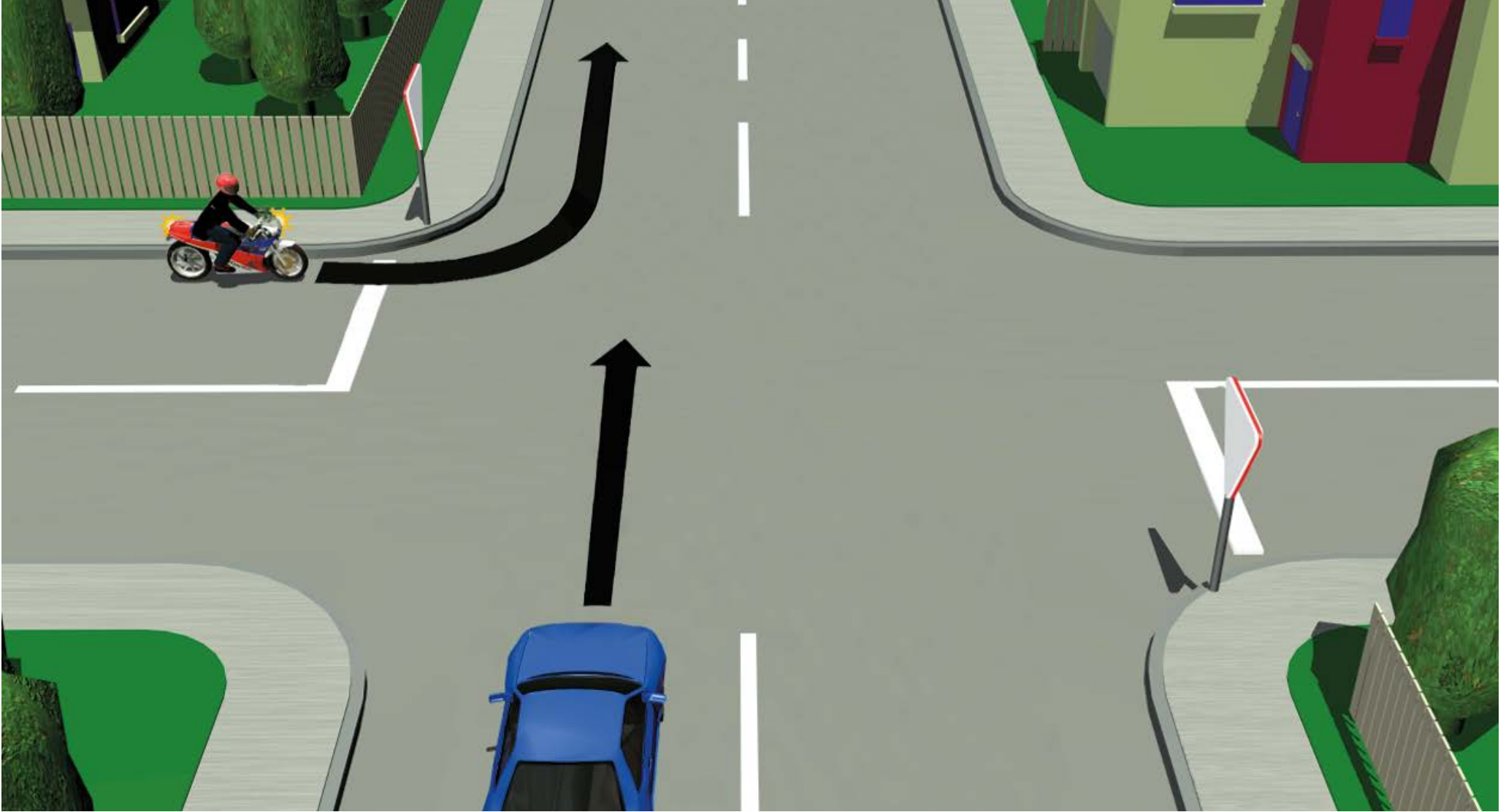




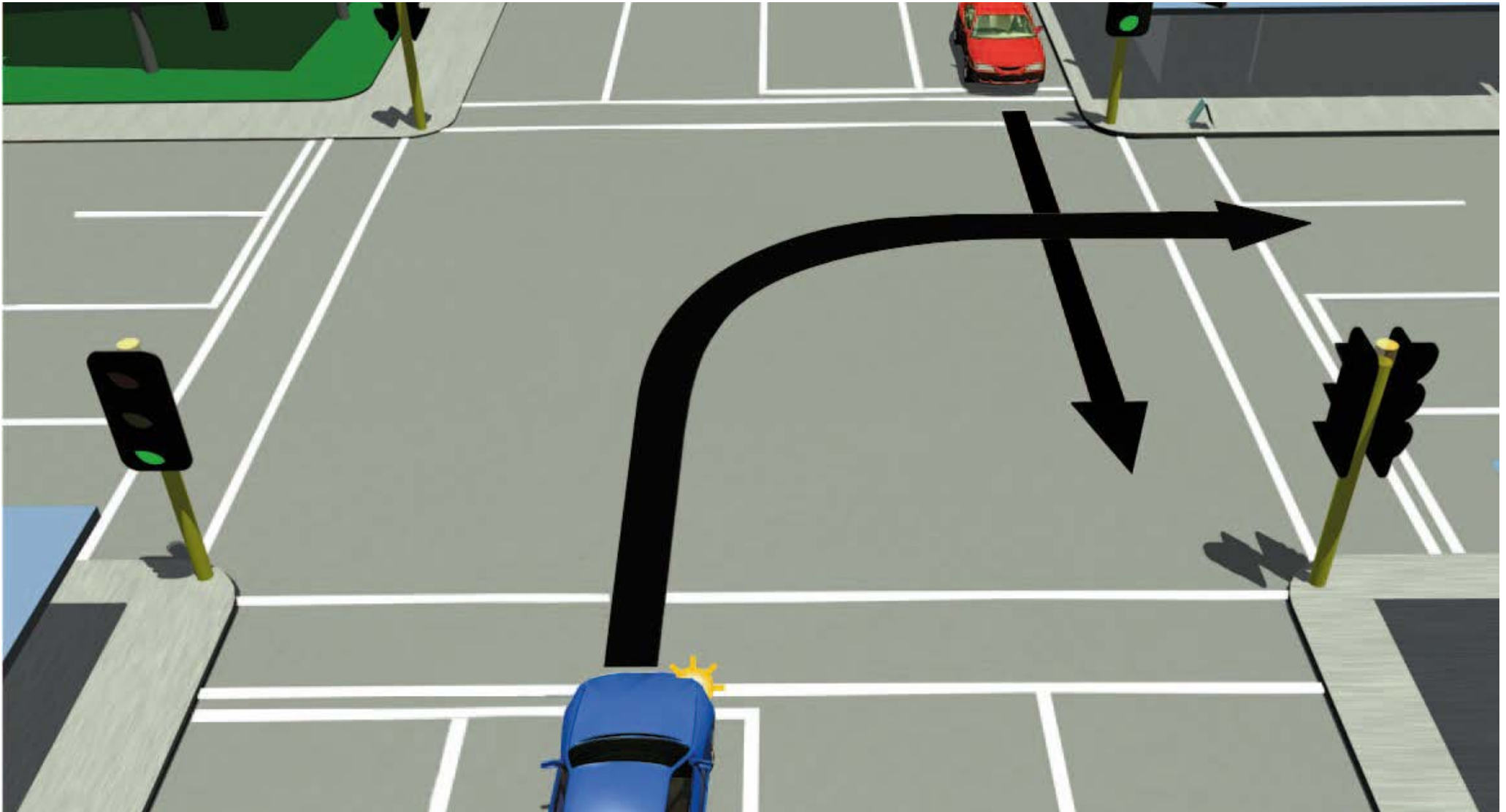




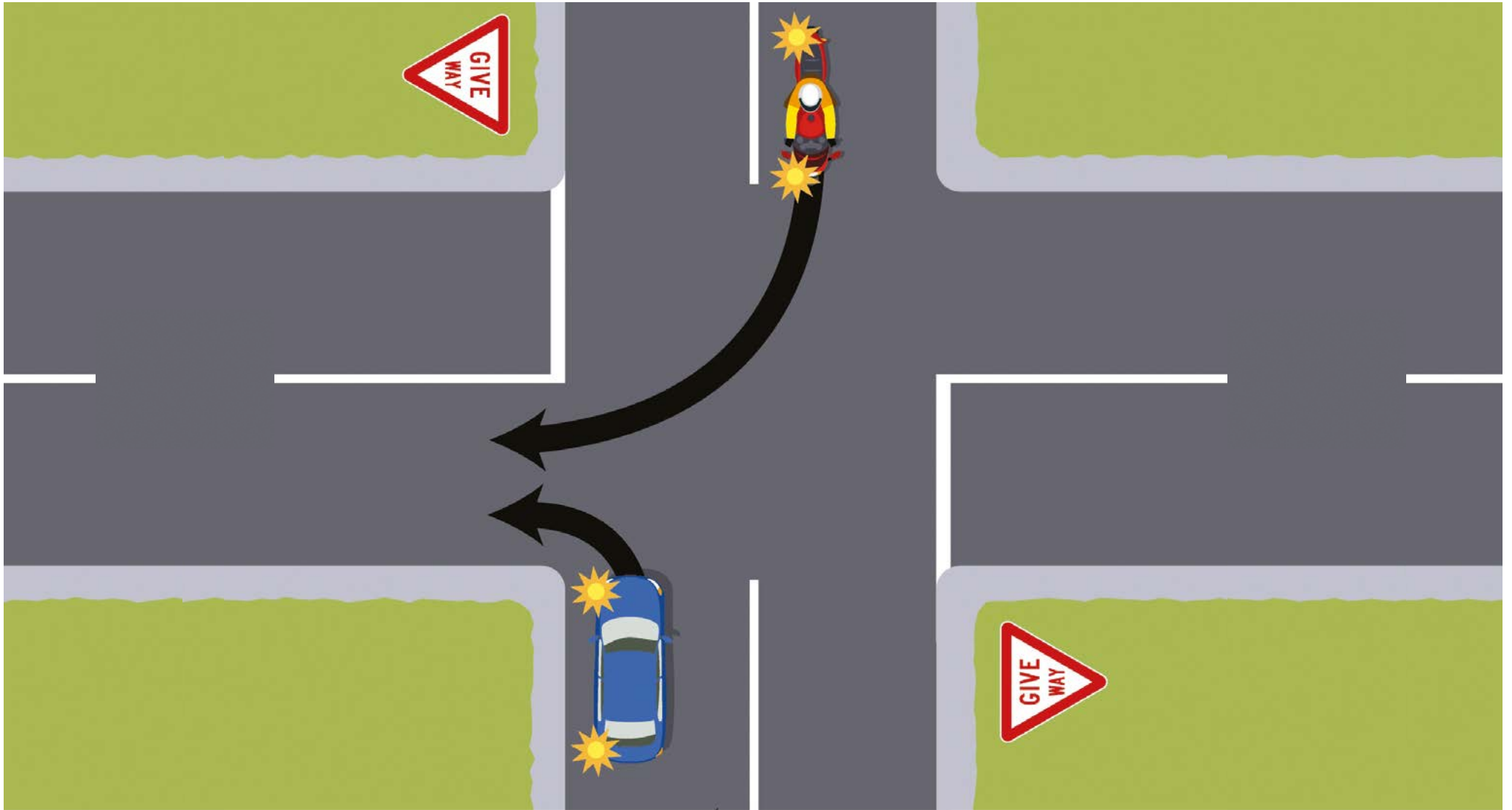




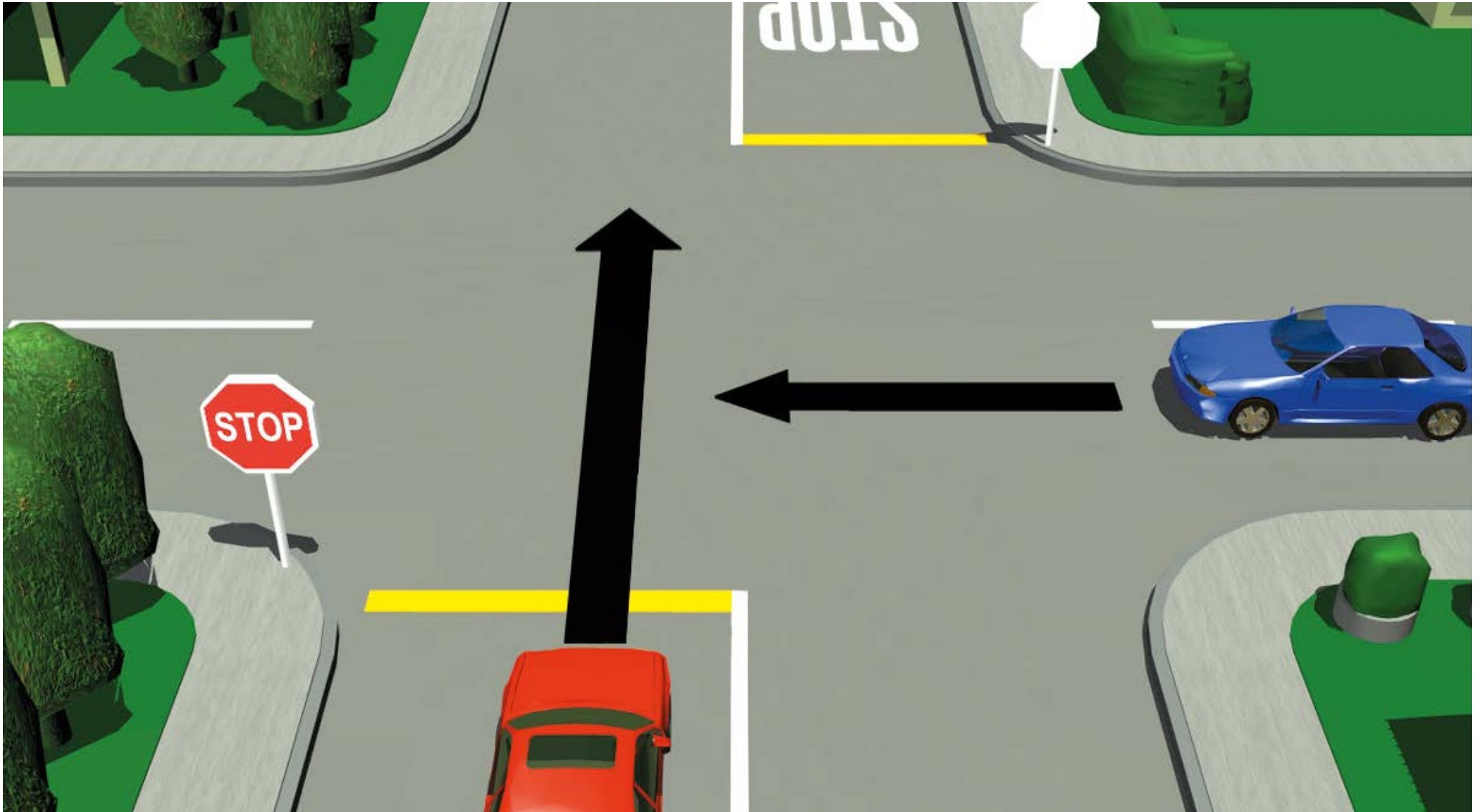






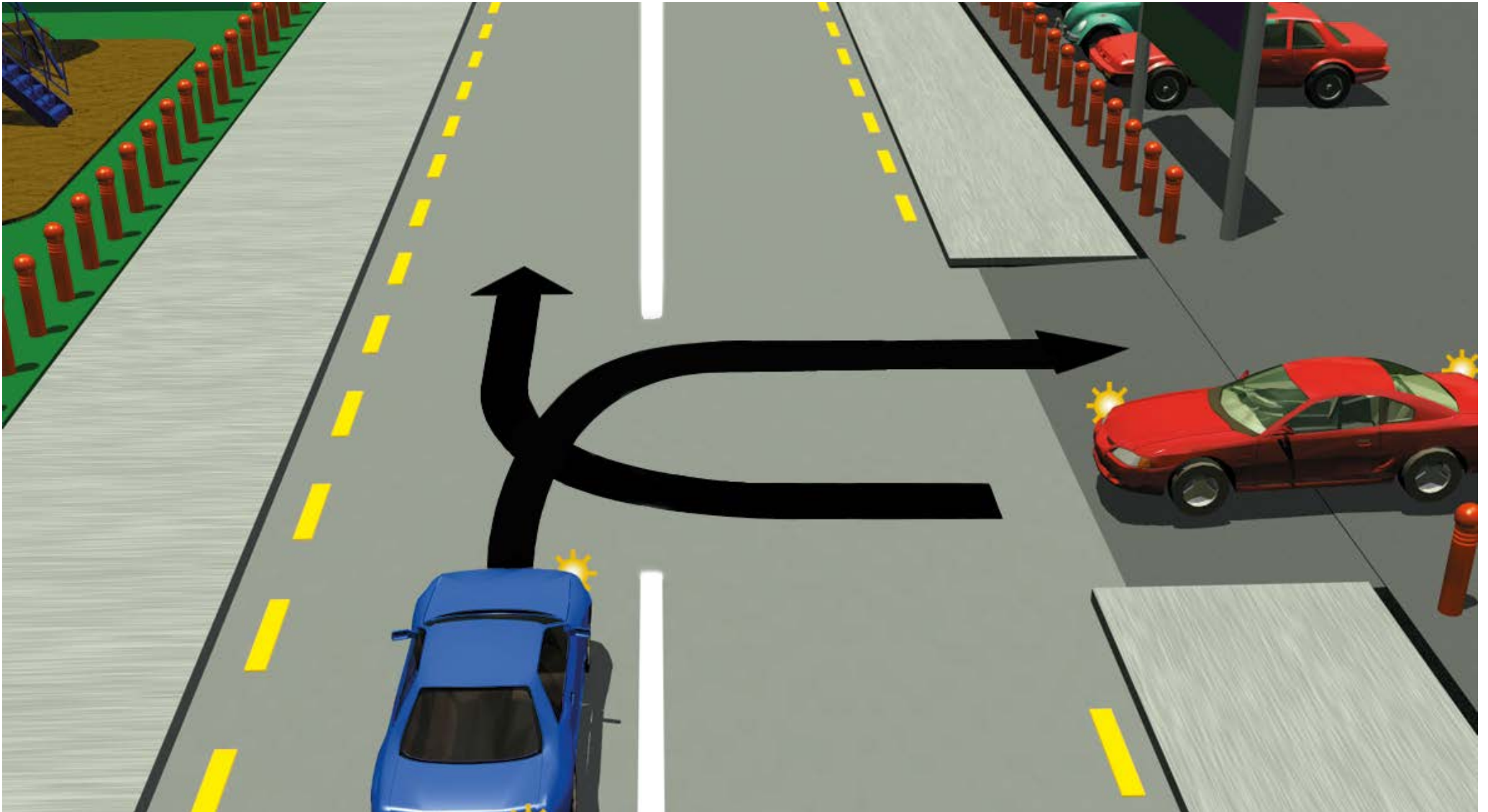




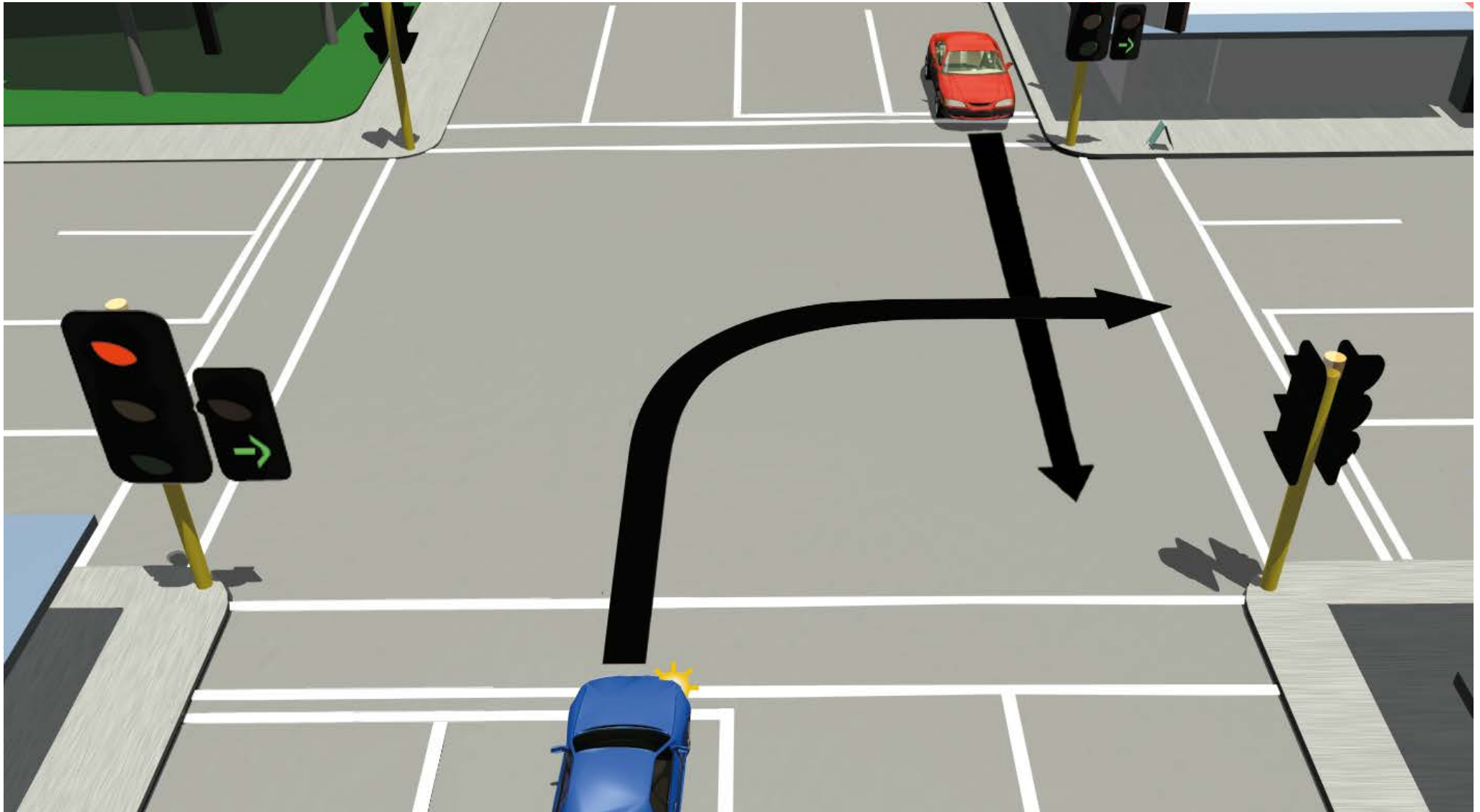




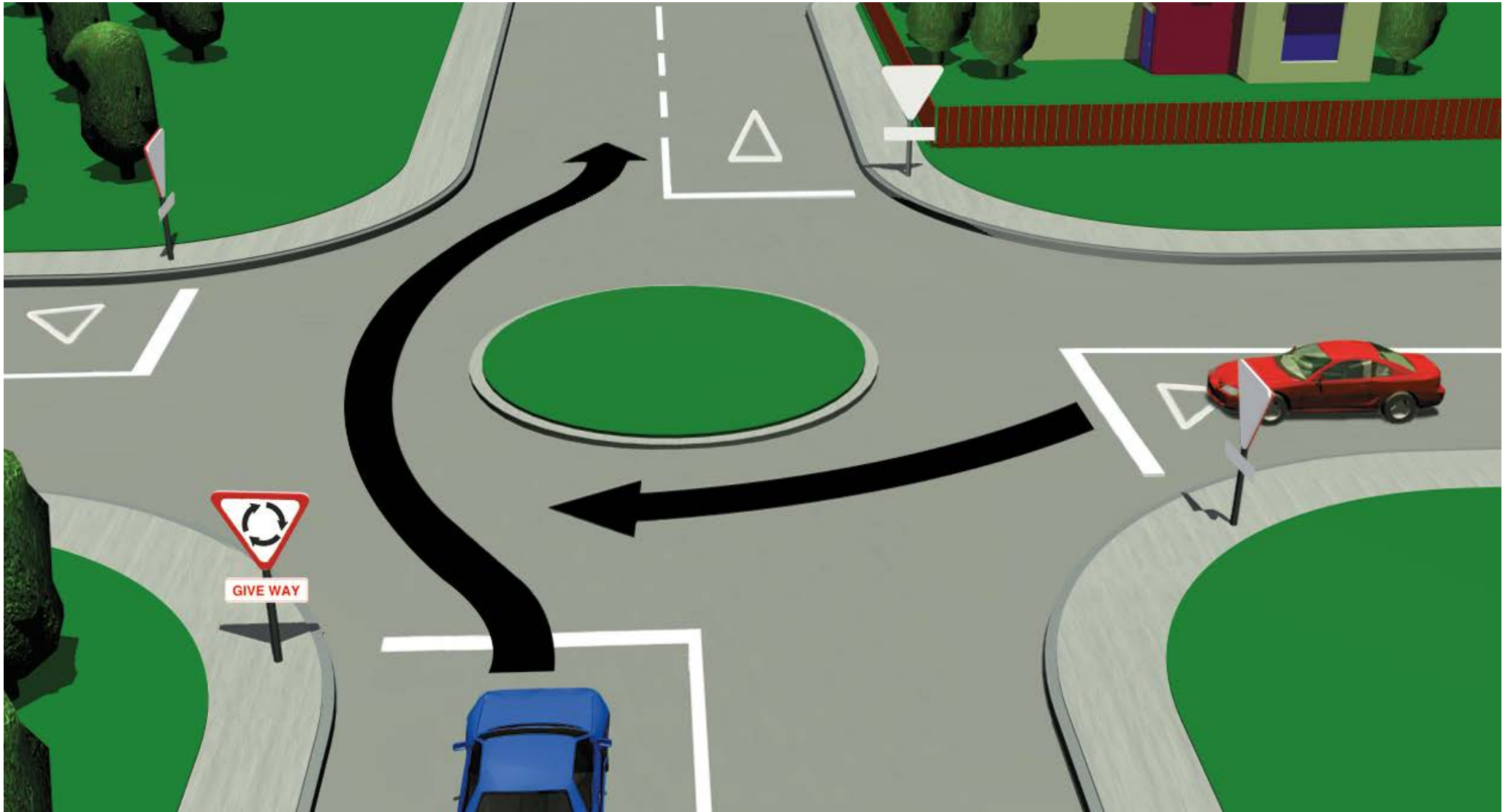












QUESTION		ANSWER
----------	--	--------

<b>ENGLISH</b>	Does the driver of the blue car have to give way?	Yes
----------------	---	-----

<b>MĀORI</b>	Me tautuku atu te kaitaraiwa o te waka kahurangi?	Āe
--------------	---	----

--	--	--

--	--	--

--	--	--

--	--	--

--	--	--

--	--	--

--	--	--

--	--	--

