

Alcohol interlocks

This factsheet outlines the alcohol interlock programme. It explains how to get an alcohol interlock driver licence, how to have an alcohol interlock device fitted to your vehicle and how to exit the alcohol interlock programme.

Step 1: disqualification

If you're convicted by the courts (under section 65AC of the Land Transport Act 1998) for driving offences involving alcohol, you'll be given an alcohol interlock disqualification of 28 days or more.

Any driver licence card you held before your disqualification is cancelled and you won't be entitled to a limited licence.

At the end of the alcohol interlock disqualification, you're still disqualified from driving until you've been issued with an alcohol interlock licence.

If you have other disqualifications or suspensions, you have to wait for them to end too before you can get an alcohol interlock licence.

Step 2: getting an alcohol interlock licence

After any disqualifications and/or suspensions have ended, you can apply to reinstate your licence at any driver licensing agent. You'll be issued with an alcohol interlock licence, which means you'll only be entitled to drive vehicles fitted with an approved alcohol interlock device. See *Getting your licence issued*.

You'll need to follow step 3 before you can start to drive again.

Step 3: install an alcohol interlock

An alcohol interlock is a breath testing device that's wired into a vehicle's starting system. Before the vehicle can start, the driver must blow into the device. If any alcohol is detected on your breath, the vehicle won't start.

There are 2 approved providers of alcohol interlocks:

Draeger New Zealand Ltd

Go to www.draeger.com/interlockNZ to find an installer near you, then contact the installer directly to find out more about leasing and installing an alcohol interlock device.

Smart Start NZ

Call Smart Start NZ on 0800 002 182 for more information

about leasing and installing an alcohol interlock device. You can also go to www.smartstartinterlocks.co.nz to see where your closest Smart Start installer is.

You can also go to www.nzta.govt.nz/AID-installer to find an installer near you.

You'll need to pay an installation fee and a monthly lease fee to the installer. These fees may vary. The approved provider/installer can tell you what the fees will be.

NZ Transport Agency Waka Kotahi (NZTA) may grant you subsidy assistance for some alcohol interlock costs if your financial circumstances qualify. See *Alcohol interlock subsidy*.

Step 4: drive with the alcohol interlock

You must breathe into the alcohol interlock before starting the vehicle. The alcohol interlock analyses the breath sample and if alcohol is detected the vehicle won't start.

You also need to provide a breath sample at random times while the vehicle is in use (this is called a rolling retest).

Make sure you take every test the device requires, including re-tests. If you don't take a test it can affect your assessment when you apply for approval to exit this stage of the programme.

Data relating to the vehicle use, alcohol readings and violations are recorded by the device. Each month the vehicle must be taken to the installer for servicing and to have the data downloaded. If the vehicle isn't taken to the installer for a scheduled service and data download, then the interlock device will prevent the vehicle from starting until the installer services the alcohol interlock.

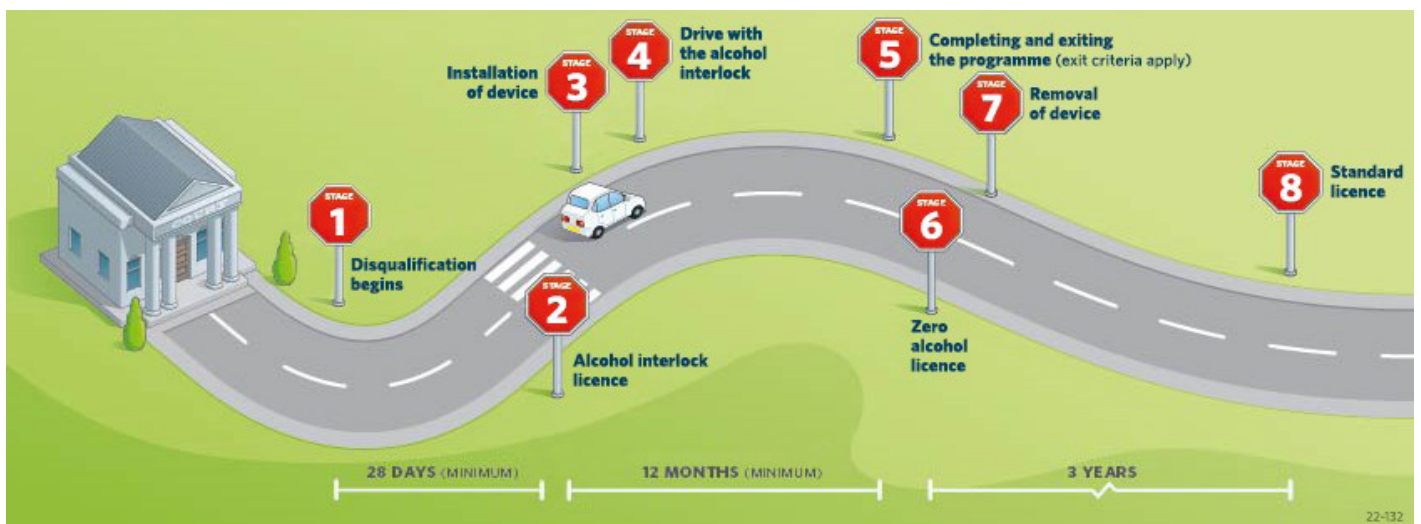
Make sure you're familiar with how your alcohol interlock works. You can download a user manual from your provider's website.

Draeger New Zealand Ltd

<https://www.draeger.com/Library/Content/DSP-ITL-607-Rev2-User-Guide-NZ.pdf>

Smart Start NZ

https://smartstartinterlocks.co.nz/wp-content/uploads/2021/07/SSI_Manual_V2.pdf



When to apply to exit the programme

Before you can exit this stage you must have held the alcohol interlock licence **for at least 12 months**.

While you have the alcohol interlock licence you must:

- have driven a vehicle (so we can assess whether you're eligible to leave the alcohol interlock stage), and
- have **only** driven vehicles with approved alcohol interlock devices installed, and
- meet one of the following criteria:

Option 1	Option 2
You haven't committed any violations in the 6-month period before your request to exit the alcohol interlock programme.	<ul style="list-style-type: none">▪ You haven't committed any violations in the 3-month period before your request to exit the alcohol interlock programme AND▪ You've successfully completed a drug and alcohol assessment* at a Ministry of Health-approved assessment centre. <p>To find a centre go to www.nzta.govt.nz/assessment-centres</p> <p><i>*This may include things like counselling, blood tests and a medical assessment. Check with your assessment centre to make sure you've completed the whole assessment.</i></p>

If your alcohol interlock sentence replaces a previous indefinite disqualification that hadn't been ended, you must meet option 2.

WHAT IS A VIOLATION?

Breaching any of the alcohol interlock licence conditions defined in the Land Transport (Alcohol Interlock) Regulations 2012 is a violation.

This means if you do any of the following during the period being assessed (ie 3 months or 6 months) we won't give you approval to exit the alcohol interlock stage.

- Tamper with the alcohol interlock device.
- Fail a breath test administered by the device because of your breath alcohol level.
- Fail to do 2 or more rolling retests.
- Start or attempt to start the vehicle without an initial breath test (ie by pushing or hot wiring the vehicle).
- Fail to present the vehicle for 2 or more scheduled inspections/services.

Step 5: approval to exit the alcohol interlock licence stage of the programme

When you're ready to exit the alcohol interlock stage of the programme, and you've met the criteria above, you need to get your AID provider to download a reading for you.

Immediately after this download, apply to exit the programme at www.nzta.govt.nz/AID-exit. You can supply additional evidence if you wish.

Once we've granted you approval to exit the programme, you can move to step 6.

Step 6: getting a zero alcohol licence

After you get approval to exit the programme, you can apply to get a zero alcohol licence. See *Getting your licence issued*.

You're still subject to the conditions of your alcohol interlock licence (ie you can only drive vehicles fitted with an alcohol interlock device) until you've got your zero alcohol licence.

Step 7: removal of the alcohol interlock from your vehicle

Take your zero alcohol licence to the approved provider/installer. Your zero alcohol licence lets the installer know that you're approved to exit the alcohol interlock stage of the programme. The installer will then remove the alcohol interlock from your vehicle.

After the alcohol interlock has been removed from your vehicle, you'll still be subject to a zero alcohol limit for the 3 years that you hold your zero alcohol licence. This means that if you have even one drink and then drive, you can be charged with drink driving and disqualified.

Step 8: getting a standard licence

You'll need to hold your zero alcohol licence for 3 years, and then it will expire. You can then apply to reinstate your licence at any driver licensing agent and be issued with a standard licence. See *Getting your licence issued*.

Getting your licence issued

You can apply at any driver licensing agent. To find an agent go to www.nzta.govt.nz/agent

You'll need to:

- submit a completed *Application for alcohol interlock or zero alcohol licence* (DL8) form - go to www.nzta.govt.nz/form-DL8
- provide evidence of your identity - this can be:
 - » your New Zealand photo driver licence (which must be current or expired up to 2 years) or
 - » your current New Zealand passport, or
 - » 2 other forms of acceptable evidence of identity (see *Identification for driver licensing* (Factsheet 20) for more information and a full list of acceptable ID)
- prove your eyesight meets the required standard
- have your image and signature captured
- pay the relevant fee OR take evidence that you're eligible for an alcohol interlock subsidy (see *Alcohol interlock subsidy*).

Alcohol interlock licence application fee

If you were disqualified for less than 12 months, the fee is **\$31.30**.

If you were disqualified for more than 12 months, you'll also need to pass the appropriate tests and pay test fees.

Car licence tests (class 1)

You'll have to pass a theory test and a practical test for a car. Your application fee is **\$136.90**.

Your application fee includes 2 theory tests and 2 practical tests. If you need to sit 3 tests or more, you'll pay a fee for each test.

Test type	Test fee for each test from 3rd attempt
Theory test	\$54.60
Full practical test	\$71.90

Learner or restricted fees and tests are different

If you have a learner licence, the application fee is **\$77.00**. You only have to pass a theory test.

If you have a restricted licence, the application fee is **\$163.60**. You have to pass a theory test and a restricted licence practical test.

If you need to sit 3 tests or more, you'll pay a fee for each test.

Test type	Test fee for each test from 3rd attempt
Theory test	\$54.60
Restricted practical test	\$102.80

Changing or rebooking a test for a car licence

If you need to change or cancel your test, please do it as far in advance as possible. Then another person can book the test slot.

When you change or cancel your test, you may need to pay a fee.

If you change or cancel your test within 2 full working days of the day of your test, this counts as one of your included tests.

Theory tests

If it's your:	and you change or cancel it:	then you'll pay:
1st test	anytime	\$16.40
2nd test	more than 2 full working days <i>before</i> the date of your test	\$16.40
	within 2 full working days of your test	\$54.60
3rd test or more	more than 2 full working days <i>before</i> the date of your test	\$16.40
	within 2 full working days of your test	\$54.60

Practical tests

If it's your:	and you change or cancel it:	and you do it:	then you'll pay:
1st test	anytime	online	nothing
		at an agent	\$16.40
2nd test	more than 2 full working days <i>before</i> the date of your test	online	nothing
		at an agent	\$16.40
	within 2 full working days of your test	online or at an agent	\$102.80 (restricted) or \$71.90 (full)
3rd test or more	more than 2 full working days <i>before</i> the date of your test	online	nothing
		at an agent	\$16.40
	within 2 full working days of your test	online or at an agent	\$102.80 (restricted) or \$71.90 (full)

For example, if your **first** test is booked on Monday, and you cancel it on the Friday beforehand, this counts as your first test. When you rebook your test, this will be your **second** test.



If you cancel the test, you won't have to pay anything at the time. You'll pay the fee above when you rebook the test.

Heavy vehicle tests (class 2-5)

If you had a heavy vehicle licence (classes 2-5), you only sit a theory and a practical test for the highest class. For example, for a class 5 licence you just sit a theory and practical test for class 5.

You'll pay the application fee of **\$31.30** and the theory test fee of **\$45.70** when you apply (total **\$77.00**). When you've passed your theory test, you'll pay the practical test fee of **\$59.90** to book your practical test.

It's free to change, cancel or rebook your test. Please do it as far in advance as possible so someone else can book the test time.

You can complete an approved course instead of passing a practical test. You won't have to pay the practical test fee.

Motorcycle tests (class 6)

You'll have to pass a theory and practical test for a motorcycle. If you also want to get your car licence back, you'll need to sit both sets of tests.

You'll pay the application fee of **\$31.30** and the theory test fee of **\$45.70** when you apply (total **\$77.00**). When you've passed your theory test, you'll pay the practical test fee of **\$59.90** to book your practical test.

It's free to change, cancel or rebook your test. Please do it as far in advance as possible so someone else can book the test time.

Supervisor condition or learner licence

If you've passed a theory test but still have to sit a practical test, you'll get a licence with a supervisor condition. The supervisor condition will remain until you've passed your practical test. www.nzta.govt.nz/supervisor-condition

If you're getting a motorcycle licence back, you'll get a motorcycle learner licence. You'll need to follow the motorcycle learner conditions until you've passed your practical test. www.nzta.govt.nz/motorcycle-learner-conditions

Zero alcohol licence fee

The application fee to move from an alcohol interlock licence to a zero alcohol licence is **\$37.30**.

Reinstating your licence fee

The application fee to reinstate your licence after you've had your zero alcohol licence for 3 years is **\$48.00**.

Alcohol interlock subsidy

You may be eligible for subsidy assistance if:

- your alcohol interlock sentence was issued from 1 July 2018 onwards, AND
- you meet the the financial eligibility criteria.

To prove you meet the eligibility criteria when you apply you can:

- provide a signed and witnessed *Statutory declaration in respect of application for alcohol interlock subsidy* (DL27) form, or
- if you choose, show your Community Services Card.

Go to www.nzta.govt.nz/form-DL27 to download the form.

If you're granted subsidy assistance, you won't have to pay for:

- the alcohol interlock licence application fee of \$31.30 (if you need to sit tests, you'll still need to pay for the tests)
- installation of the alcohol interlock device in your vehicle
- part of the monthly servicing fees (\$50 subsidised a month) for up to 15 services
- the zero alcohol licence issued after you've exited the alcohol interlock programme
- removal of the alcohol interlock device from your vehicle.

The subsidy will only last for 15 months from when you get your alcohol interlock licence. If you haven't been given approval to exit the programme and had the device removed from your vehicle within 15 months of getting your alcohol interlock licence, you won't be eligible for any further subsidised fees.

If you miss more than one monthly service in a row, your subsidy may stop. Contact your provider straight away if you think you might not be able to get to your monthly service.

You can only get the subsidy once, even if you get another alcohol interlock sentence.

Eligibility criteria

You're eligible for a subsidy if you are:

- entitled to receive sole parent support, a supported living payment, a community wage, an emergency benefit, veteran's pension, youth payment or young parent payment, or
- entitled to receive weekly income compensation under the Veteran's Support Act 2014, or

- your family or superannuation income is within the limits:

If your household is:	then your yearly income (before tax) can be up to:
Single - living with others	\$33,919
Single - living alone	\$35,997
Married, civil union or de facto couple - no children	\$53,828
NZ superannuation single - living with others	\$36,245
NZ superannuation single - living alone	\$38,596
NZ superannuation married, civil union or de facto couple - no children	\$57,894
Family of 2	\$65,747
Family of 3	\$80,928
Family of 4	\$93,364
Family of 5	\$105,578
Family of 6	\$119,024
For families of more than 6, the limit goes up another \$12,065 for each extra person.	

This is the same as the eligibility criteria for a Community Services Card. If you have any questions about Community Services Card eligibility, please call the Ministry of Social Development on 0800 999 999.

Can I supply my own alcohol interlock?

No. If you're subject to the conditions of an alcohol interlock licence, then you must use an approved device, provided and fitted by an approved installer.

If I have an AID fitted, can someone else drive my vehicle?

Yes. Another licensed driver can drive your vehicle but they must comply with all of the alcohol interlock requirements, eg they must complete a breath check to start the vehicle. Their results and any violations will be recorded in your assessment data, and may affect your ability to exit the alcohol interlock programme.

Can I apply for a different type of licence when I have an alcohol interlock licence?

You can apply to renew, replace or reinstate your alcohol interlock licence. You can't get a limited licence, or any new classes or endorsements.

Can I get a subsidy if my circumstances change?

If your circumstances change partway through your sentence and you meet the financial eligibility criteria, you may be eligible to have the rest of your alcohol interlock costs subsidised. For more information to go www.nzta.govt.nz/AID-subsidy

Can I use the alcohol interlock device as a breath test?

No. If you're blowing into the device you should have the intention to drive. All data will be recorded and included in your assessment when you apply to exit the alcohol interlock programme.

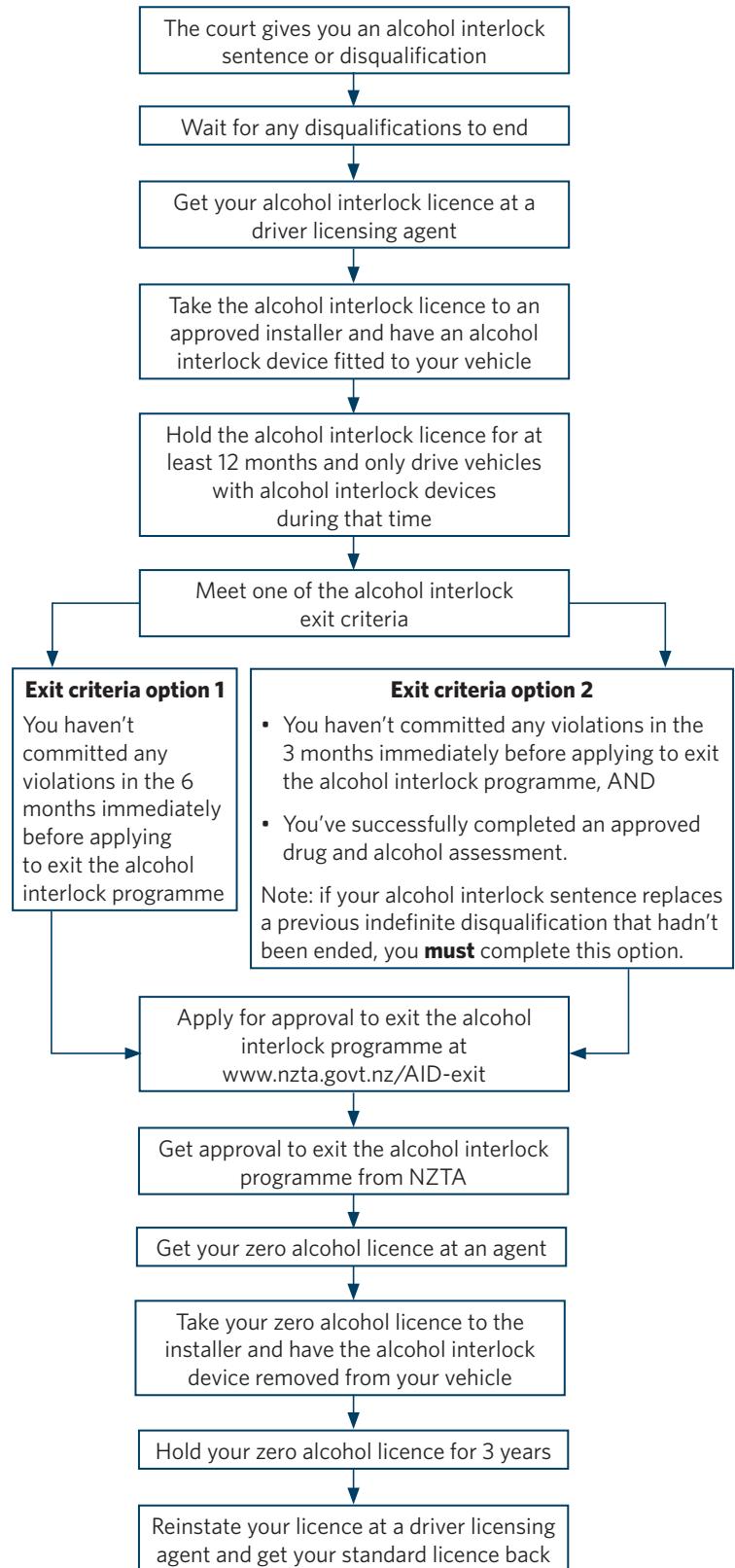
Can a substance other than alcohol make me fail a test?

Yes, some substances like sanitiser, mouthwash or food could cause you to fail a test. You should always take any re-tests that your device requires. Check your device's manual to find out what to do when this happens (follow the links on page 1).

What should I do when my vehicle is serviced?

If your mechanic needs to start your vehicle when it's being serviced or repaired, they'll need to blow into the device to get it started. We recommend you get something in writing from the garage to confirm it was being serviced at the time.

Overview of the alcohol interlock programme



This factsheet is a general guide only. It doesn't replace legal advice, and your exact requirements will depend on current legislation.

Make sure you have the most up-to-date version of this factsheet by checking www.nzta.govt.nz/factsheets



www.nzta.govt.nz



0800 822 422



NZ Transport Agency Waka Kotahi,
Private Bag 11777, Palmerston North 4442



Te Kāwanatanga o Aotearoa
New Zealand Government