

# CONNECTING NORTHLAND

'Connecting Northland' is about the Transport Agency and its partners supporting Northland through transport solutions to grow and support the region and its economy.

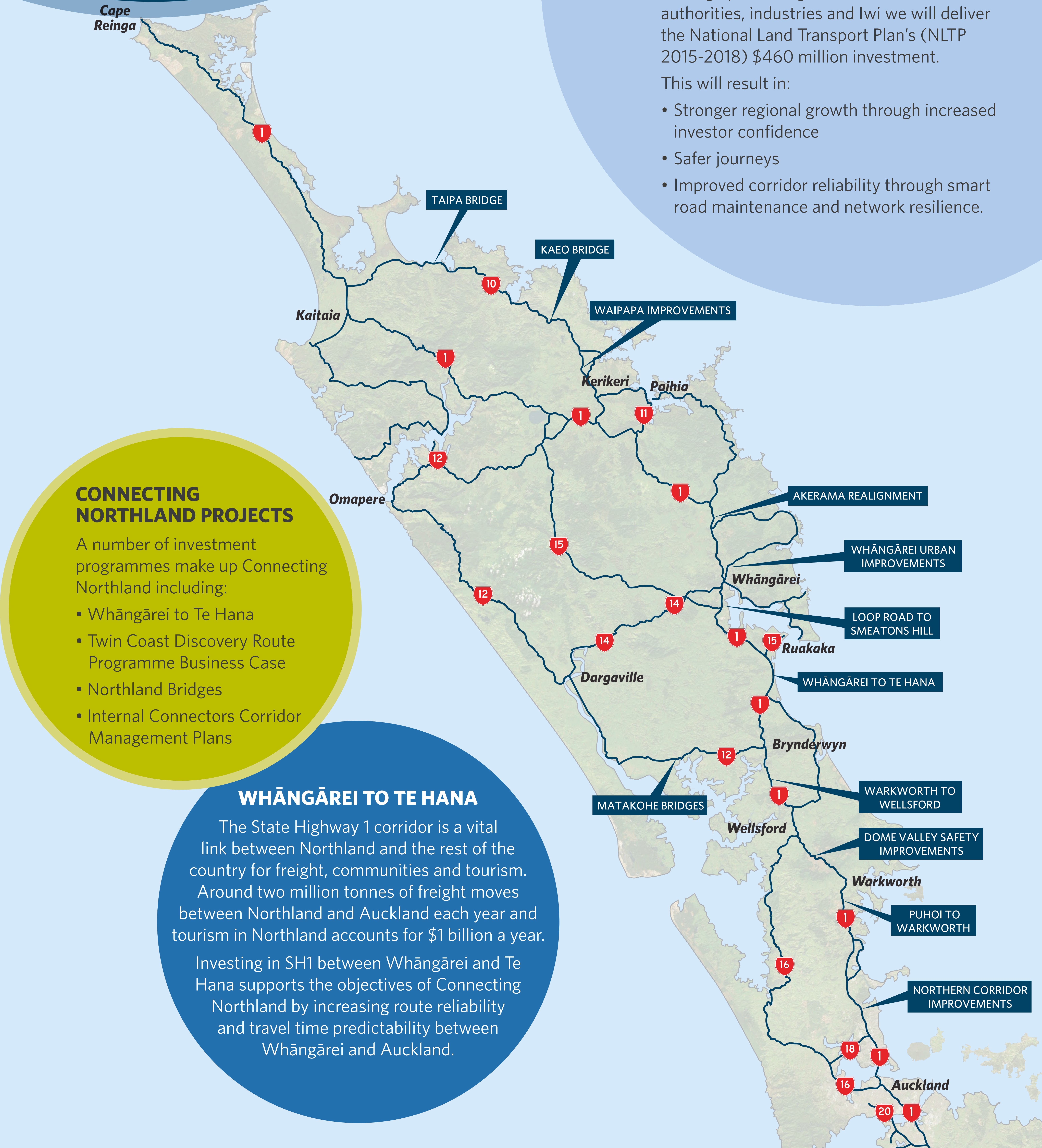
It's about connecting all communities in Northland - employees to jobs, community to important facilities such as hospitals, as well as freight to the port and key markets.

Through partnering with Northland authorities, industries and Iwi we will deliver the National Land Transport Plan's (NLTP 2015-2018) \$460 million investment.

This will result in:

- Stronger regional growth through increased investor confidence
- Safer journeys
- Improved corridor reliability through smart road maintenance and network resilience.

Cape Reinga



## CONNECTING NORTHLAND PROJECTS

A number of investment programmes make up Connecting Northland including:

- Whāngārei to Te Hana
- Twin Coast Discovery Route Programme Business Case
- Northland Bridges
- Internal Connectors Corridor Management Plans

## WHĀNGĀREI TO TE HANA

The State Highway 1 corridor is a vital link between Northland and the rest of the country for freight, communities and tourism. Around two million tonnes of freight moves between Northland and Auckland each year and tourism in Northland accounts for \$1 billion a year. Investing in SH1 between Whāngārei and Te Hana supports the objectives of Connecting Northland by increasing route reliability and travel time predictability between Whāngārei and Auckland.