

2.4KM

The two road tunnels are each 2.4km and now NZ's longest - that's the same as two Auckland Harbour Bridges, end to end.

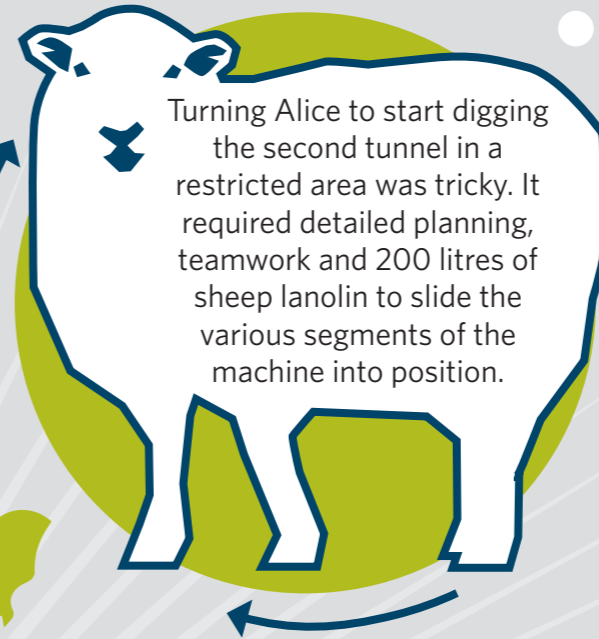
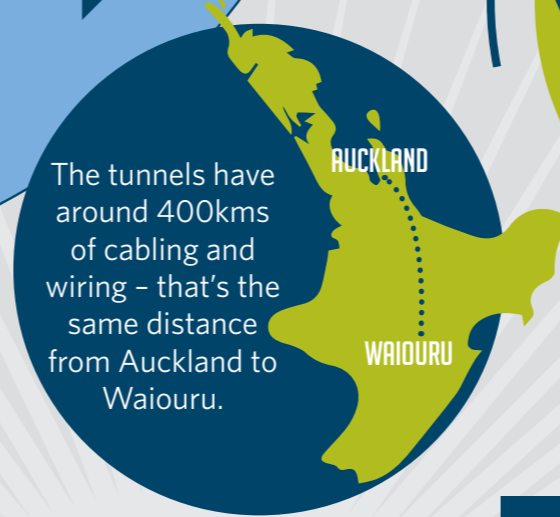
Lyttleton Road Tunnel held the previous longest road tunnel record at 1.97km.

\$ 1.4 BILLION
At a cost of \$1.4bn, the Waterview Connection is the country's largest roading project.

An Auckland boy came up with the name Alice for the tunnel boring machine. He was inspired by *Alice in Wonderland* and her adventures underground.



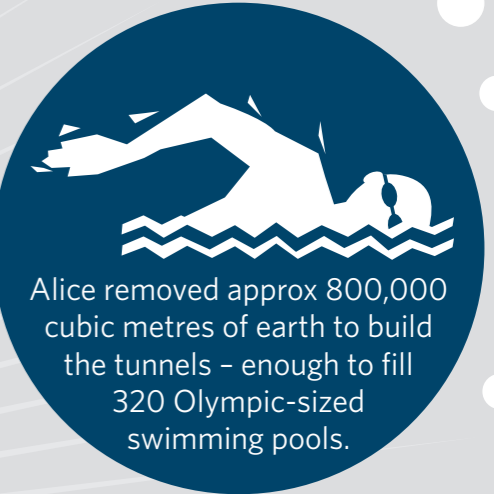
The tunnels have around 400kms of cabling and wiring - that's the same distance from Auckland to Waiouru.



Turning Alice to start digging the second tunnel in a restricted area was tricky. It required detailed planning, teamwork and 200 litres of sheep lanolin to slide the various segments of the machine into position.

62

Ventilation fans in the tunnels to keep the air fresh.



Alice removed approx 800,000 cubic metres of earth to build the tunnels - enough to fill 320 Olympic-sized swimming pools.

WATERVIEW TUNNEL FACTS

The tunnels were built by Alice, the 10th biggest tunnel boring machine in the world and the largest in the Southern Hemisphere.

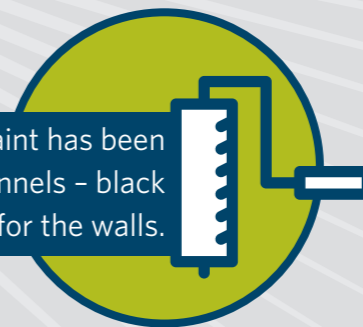


NOVEMBER 2013 - OCTOBER 2015

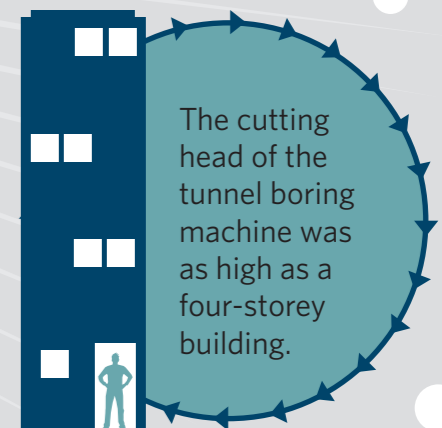
Alice began the first stage of her underground journey in November 2013 and completed her work in October 2015.

Alice was designed in Germany and built in China. She was specifically designed for the Waterview geology.

140,000m² of paint has been applied inside the tunnels - black for the roof, white for the walls.



The cutting head of the tunnel boring machine was as high as a four-storey building.



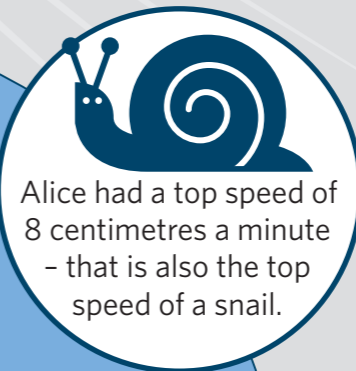
The diameter of Alice was 14.4 metres - larger than the trunk of Tane Mahuta, New Zealand's giant Kauri tree.



Wow! There are almost 5kms of drainage pipes throughout the tunnels.



Alice had a top speed of 8 centimetres a minute - that is also the top speed of a snail.



4,000
There are 4,000 lights in the tunnels.

Alice was 87m long and had a crew of about 35 people per shift.

