

# Delivering a more resilient transport network

Transport Rebuild East Coast



We're rebuilding stronger and safer highways for thriving East Coast communities

## A smarter rebuild

Roads and rail weave communities together, keep business and tourism moving and make sure everyone can access food, fuel and help from emergency services.

They're vital to our everyday life. Heavy rainfall, coastal surges and strong winds have put pressure on the East Coast roading and rail networks in recent years, and we know these challenges are not going away. That's why it's so important to be smart about how we rebuild.



## 500 locations need a longer-term fix

Crews are working hard on recovery works but there are over 500 locations where rebuild or resilience improvements are needed.

NZTA, KiwiRail, TREC, Treaty partners and councils are taking a strategic look at the network to prioritise routes and projects.

TREC is developing options for resilience and rebuild projects. The focus right now is on regionally significant routes which connect large population centres, emergency supplies and freight.

## Staging work

Delivery of the programme has been staged so the most critical regional and national links become more resilient as soon as possible.

TREC is also prioritising construction work per season. This is to ensure we balance available resources, corridor accessibility, and funding. The projects we're focusing on this year were chosen as they are critical sites where work can be delivered quickly using a fast-tracked consenting process.

We're also investigating how we address resilience on the SH35, SH38, SH50 and SH51 corridors.

## What is resilience and rebuild work?

Some of the recovery work we are doing is temporary, designed to keep people and freight moving.

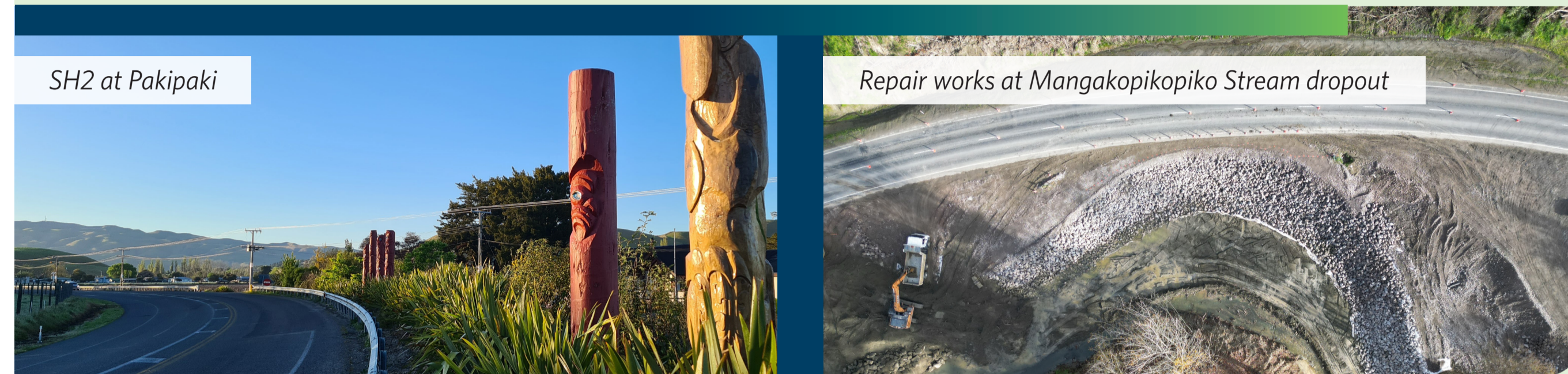
Our resilience and rebuild projects are longer-term fixes, that will help protect the transport network and keep communities connected now, and in the future. The changes we're looking at will contribute to a national transport network that will be more resilient to the impacts of climate change and other natural hazards.



SH2 at Raupunga

## Our goals

- Critical services like medical care, emergency response, food and fuel are accessible.
- Highways safely and reliably connect people, goods, and communities.
- Roads are ready for extreme weather events and can recover quickly, causing less disruption.
- Emergency and recovery work on highways is reduced.
- NZTA, iwi, hapū, councils, and local communities work together to shape a transport network that reflects our shared values and priorities.
- Industries have greater confidence to invest and grow employment in the area.



SH2 at Pakipaki

Repair works at Mangakopikopiko Stream dropout

Rebuild programmes are subject to NZTA Board endorsement and funding

## What types of works are proposed?

Closures can occur due to slips, rockfall, flooding, river scour, coastal erosion and hazardous trees.

- Solutions may include:
- » realignment
  - » retaining walls
  - » scour protection
  - » lane widening
  - » flood remediation
  - » planting
  - » road raising
  - » hazardous tree removal
  - » drainage and earthworks.

