

Appendix 15.T

Stream Sediment Transport Modelling – Deposited Sediment



Table T.1 Sediment Deposited in Streams

Catchment	Sediment deposited in streams (tonnes)													
	Baseline					Peak Construction Event					Increase from Baseline (%)			
	1/3 Q2	Q2	Q10	Q50		1/3 Q2	Q2	Q10	Q50		1/3 Q2	Q2	Q10	Q50
Porirua	6	32	46	75	7	32	47	76	2	1	1	1	1	1
Kenepuru	14	247	664	1416	16	291	787	1953	14	18	19	38		
Duck	4	63	265	308	5	80	280	440	30	28	6	43		
Pauatahanui	8	244	1460	5316	8	246	1472	5369	1	1	1	1		
Ration	5	241	780	1232	7	282	1708	2357	43	17	119	91		
Horokiri	8	376	1573	2978	9	429	1780	3576	16	14	13	20		
Wanui	13	170	403	638	17	222	480	921	29	31	19	44		
Whareroa	31	1809	9254	19642	32	1913	9801	21959	5	6	6	12		

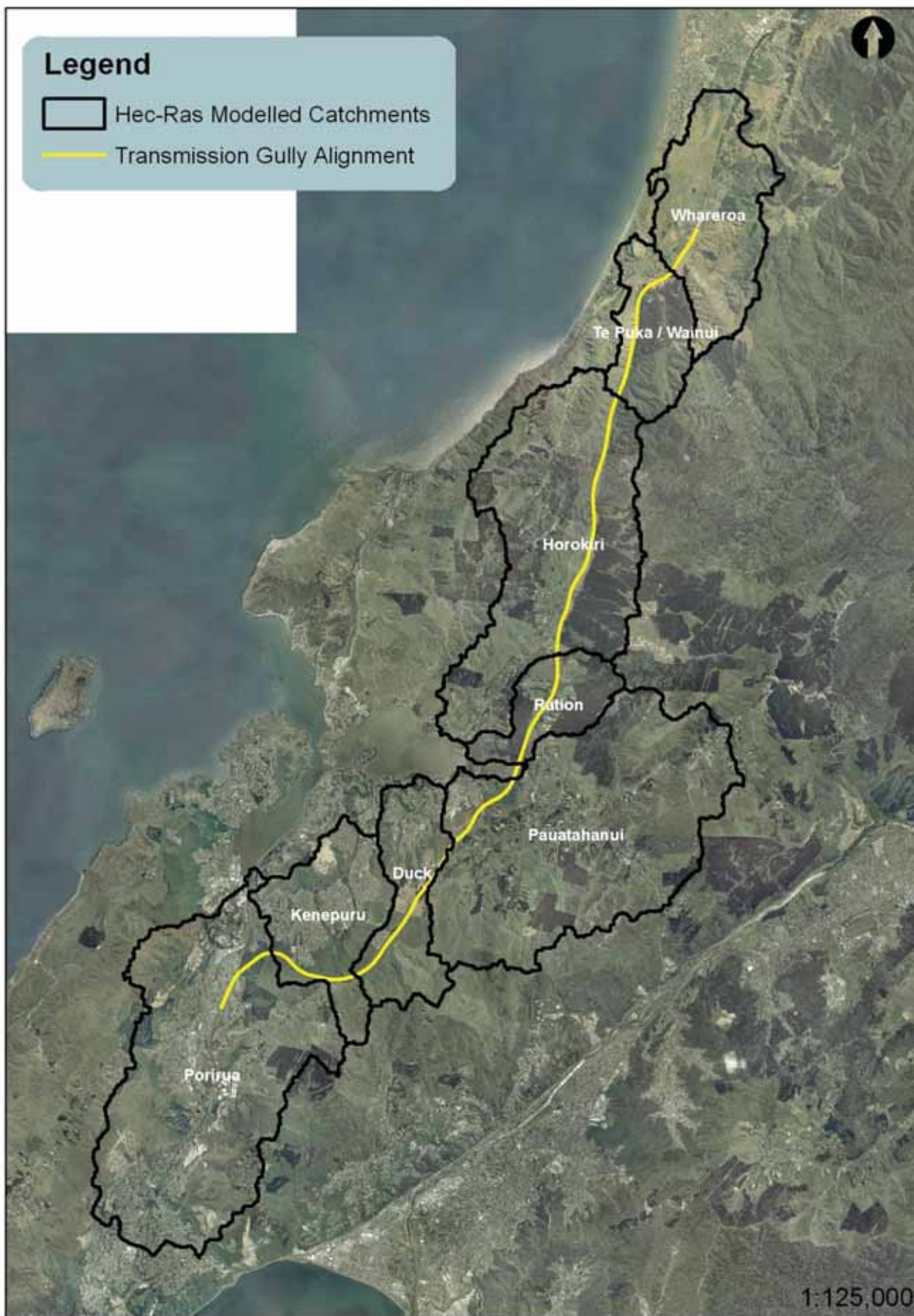


Figure T.1 – Hec-Ras Modelled Catchments

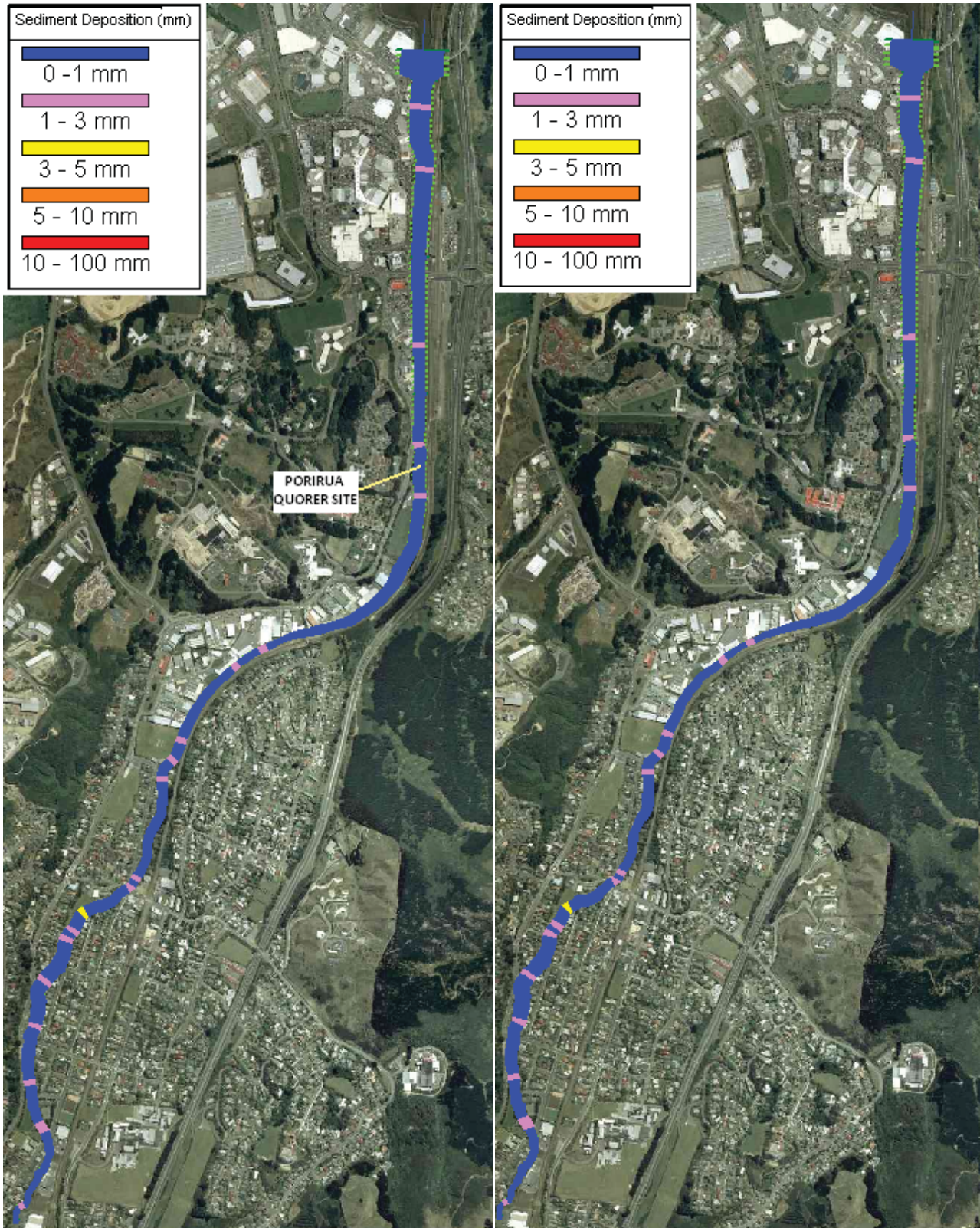


Figure T.2 – Porirua Baseline to Peak Construction Comparison 1/3 of Q2

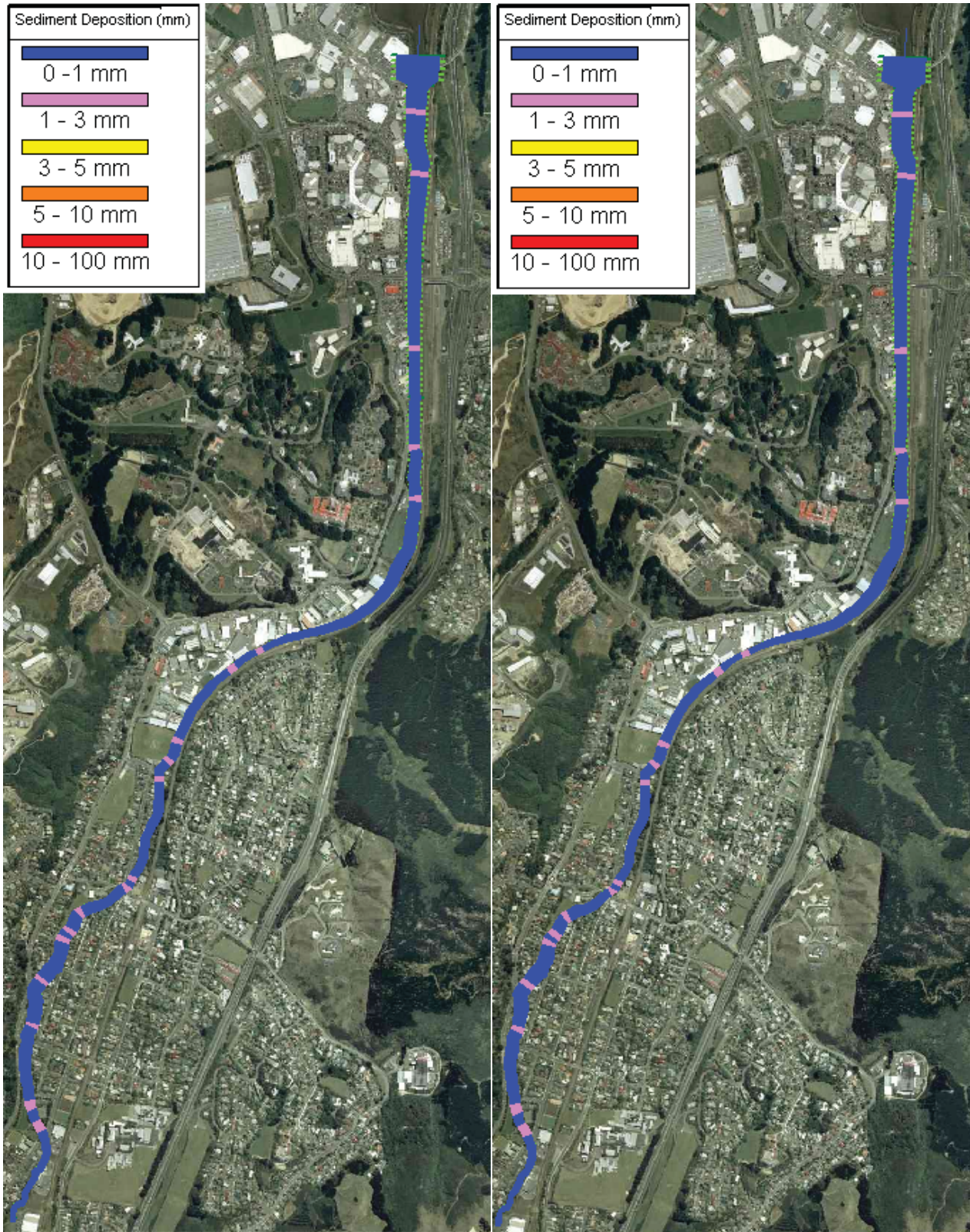


Figure T.3 – Porirua Baseline to Peak Construction Comparison Q2

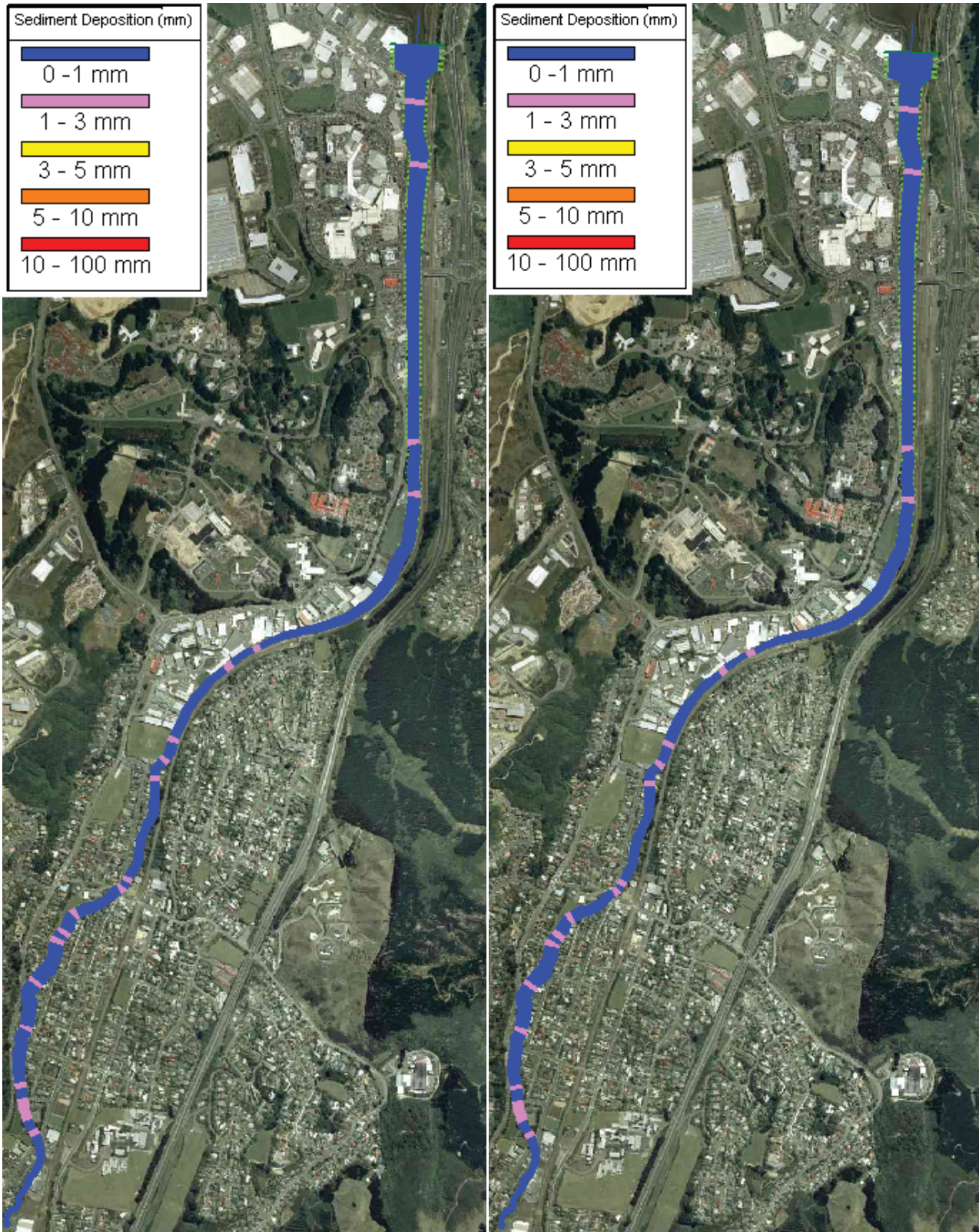


Figure T.4 – Porirua Baseline to Peak Construction Comparison Q10

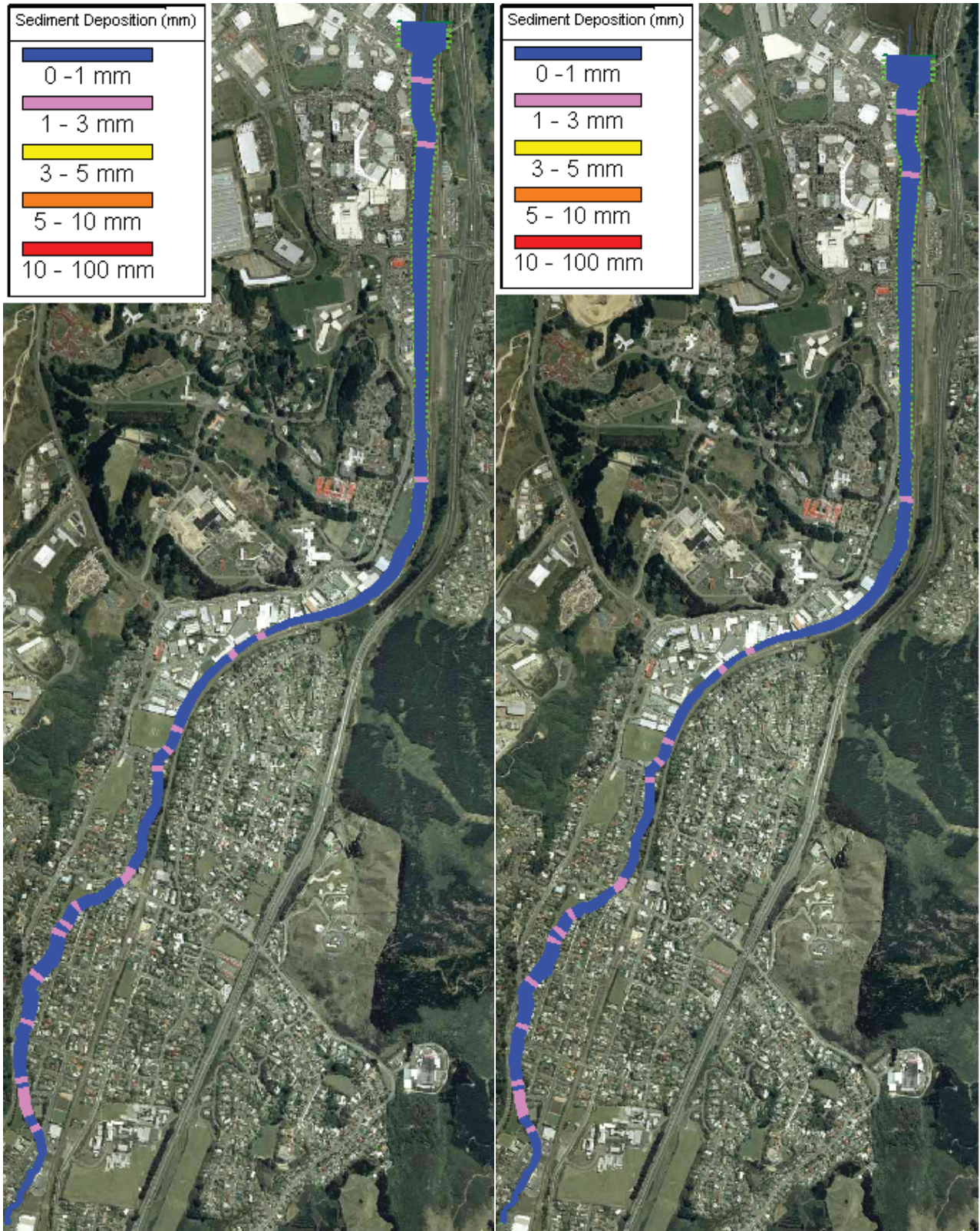


Figure T.5 – Porirua Baseline to Peak Construction Comparison Q50

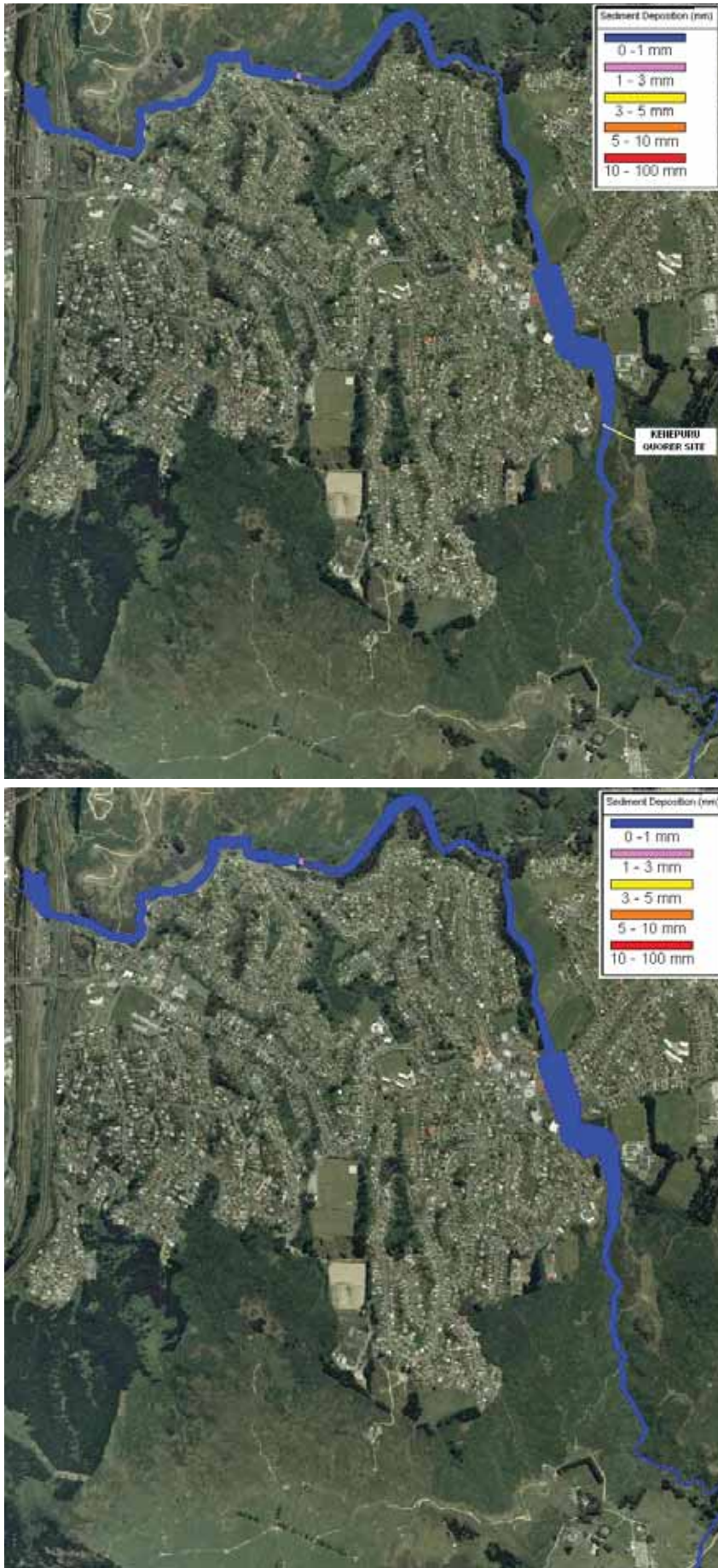


Figure T.6 – Kenepuru Baseline to Peak Construction Comparison 1/3 of Q2



Figure T.7 – Kenepuru Baseline to Peak Construction Comparison Q2

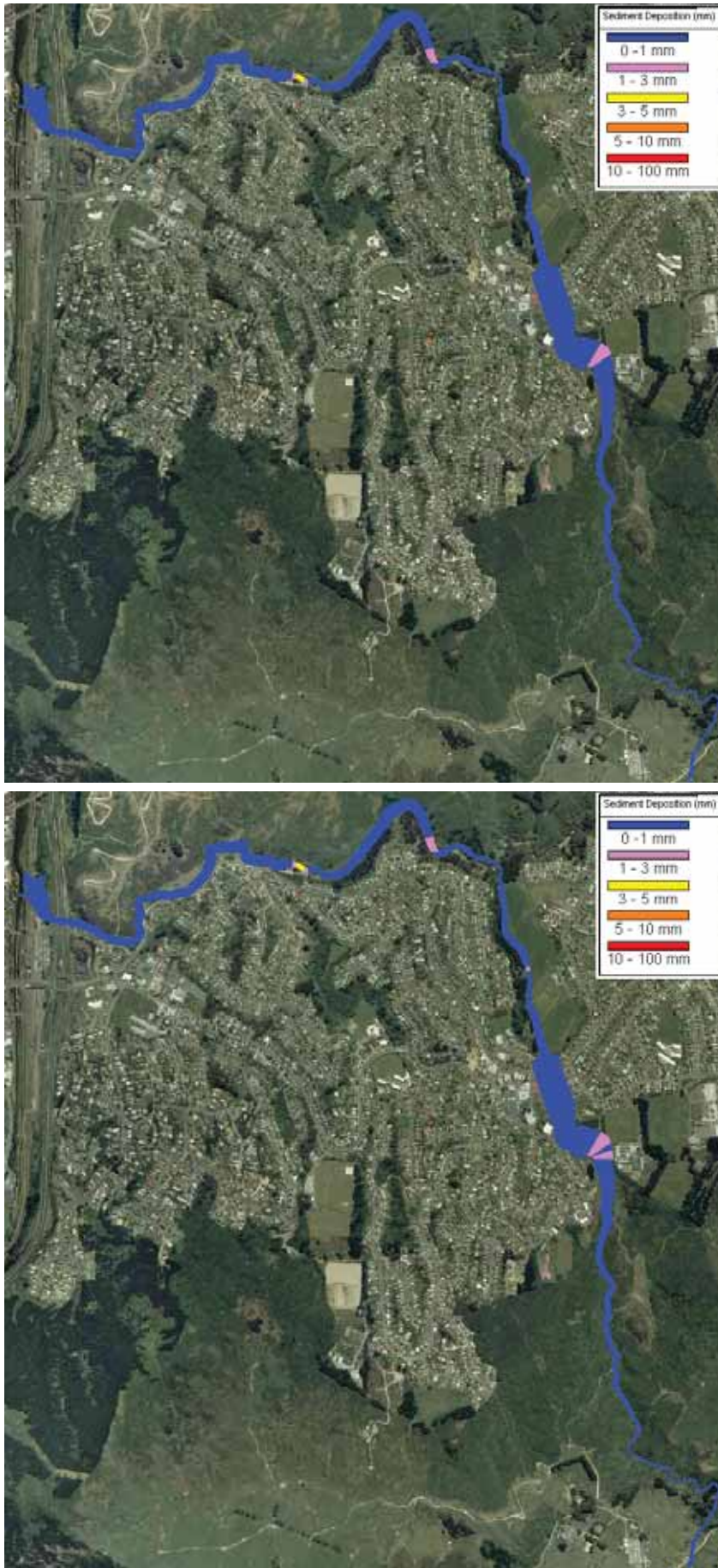


Figure T.8 – Kenepuru Baseline to Peak Construction Comparison Q10

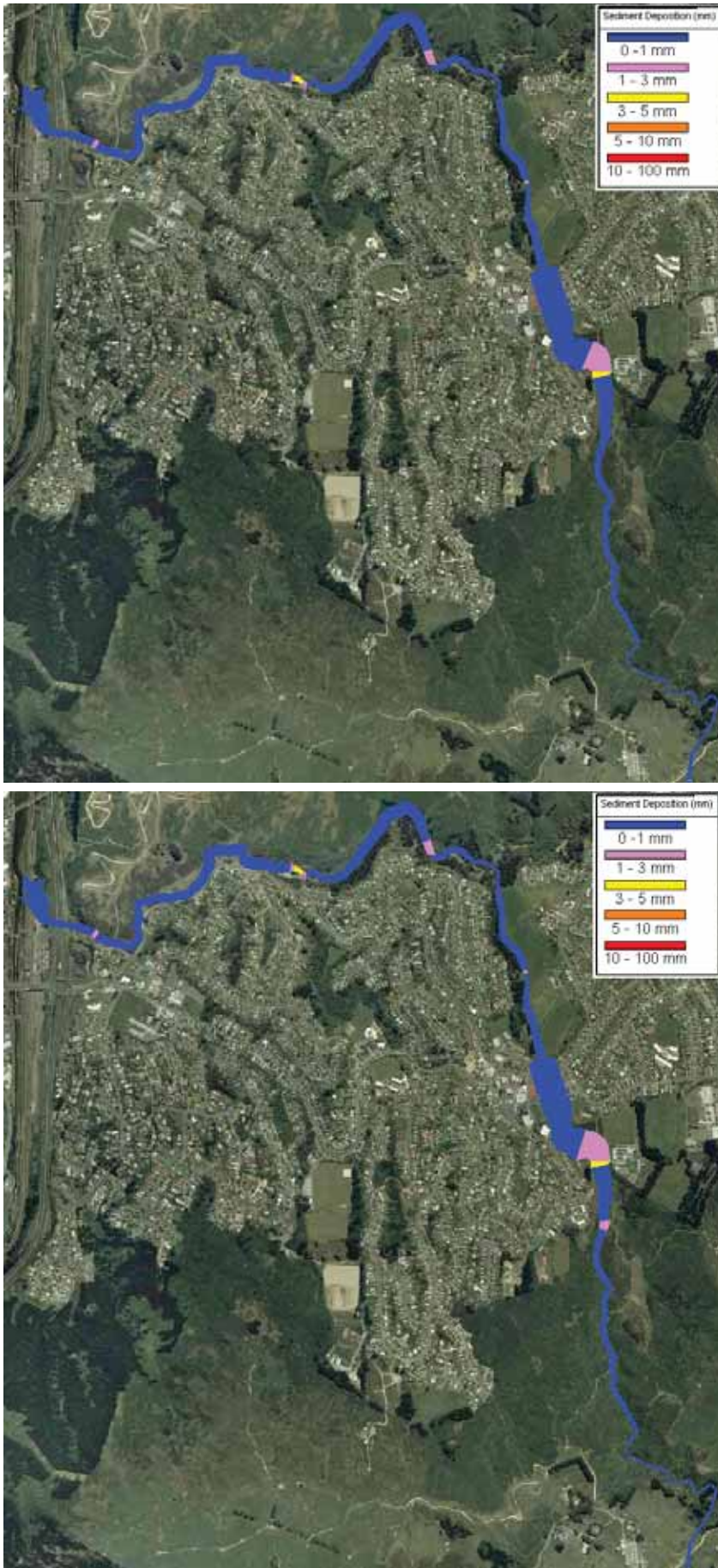


Figure T.9 – Kenepuru Baseline to Peak Construction Comparison Q50

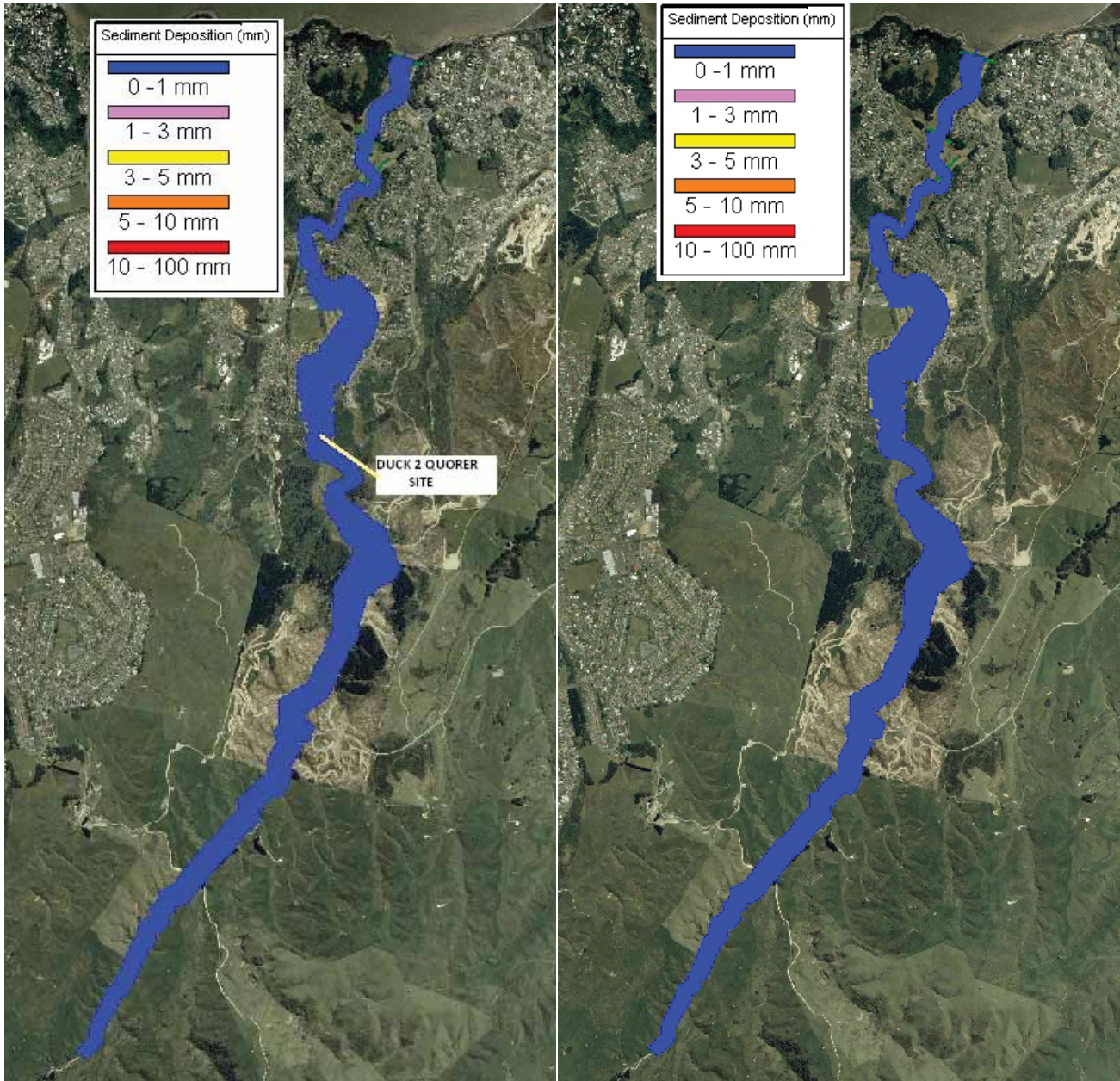


Figure T.10 – Duck Baseline to Peak Construction Comparison 1/3 of Q2

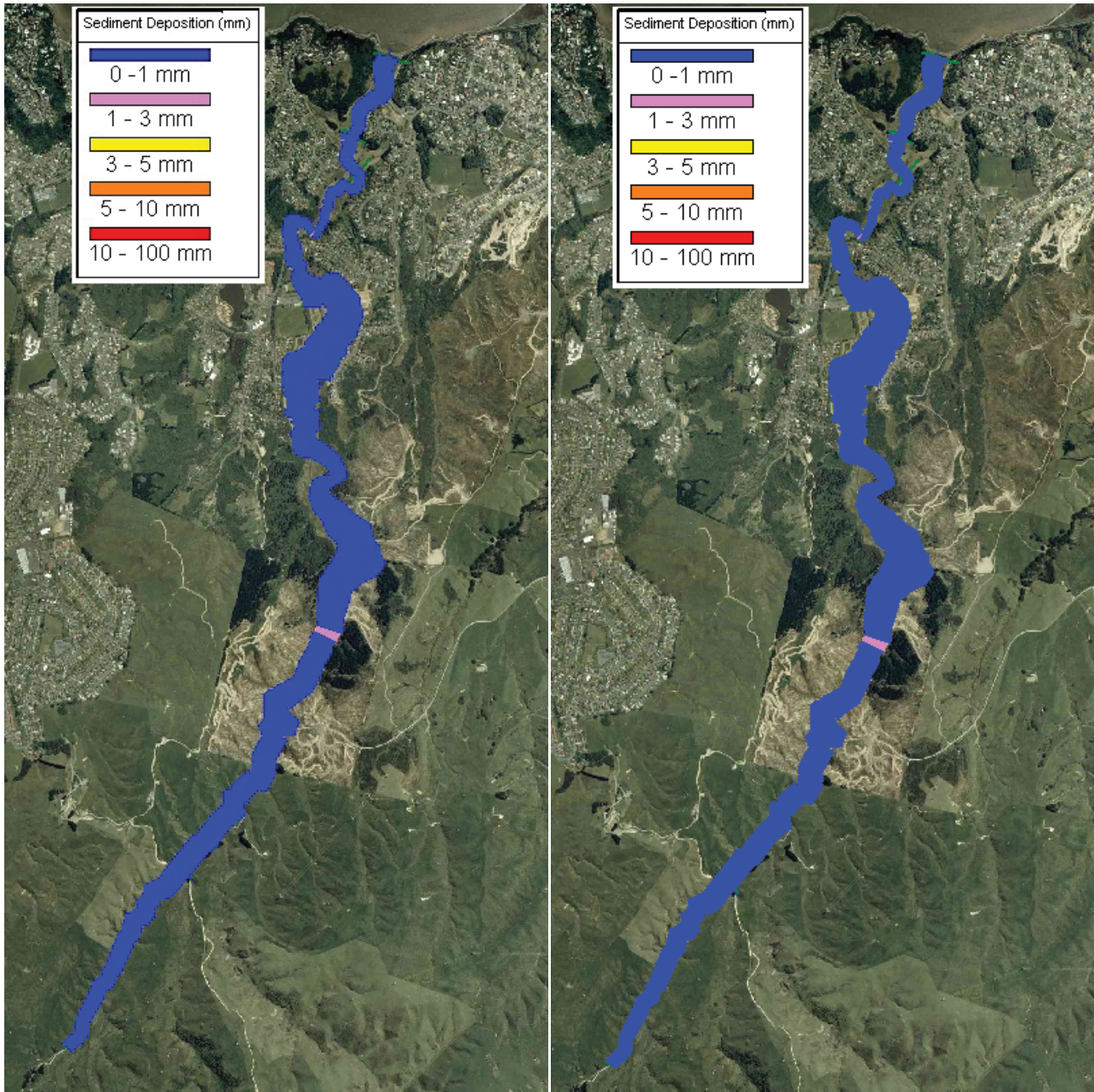


Figure T.11 – Duck Baseline to Peak Construction Comparison Q2

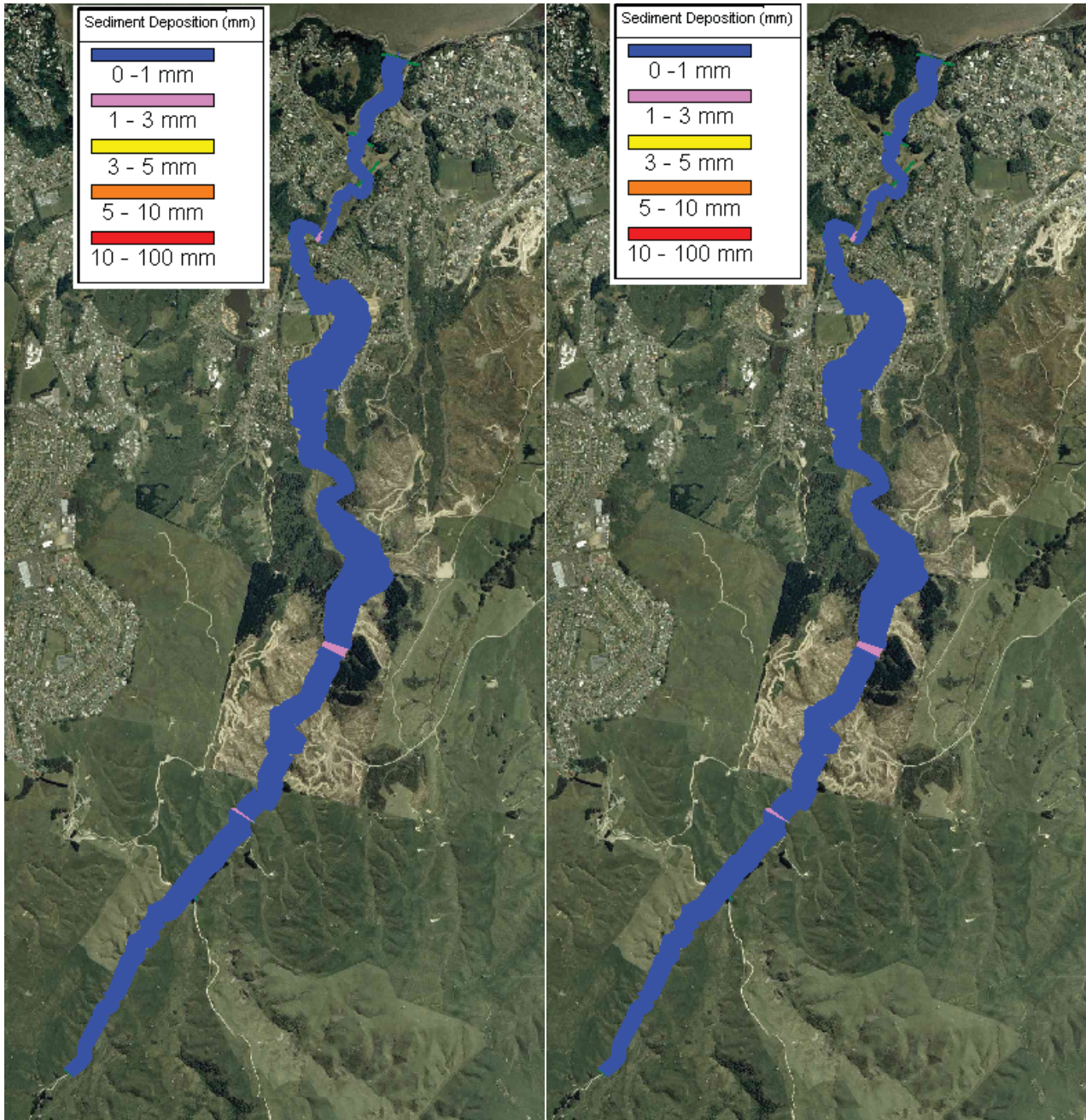


Figure T.12 – Duck Baseline to Peak Construction Comparison Q10

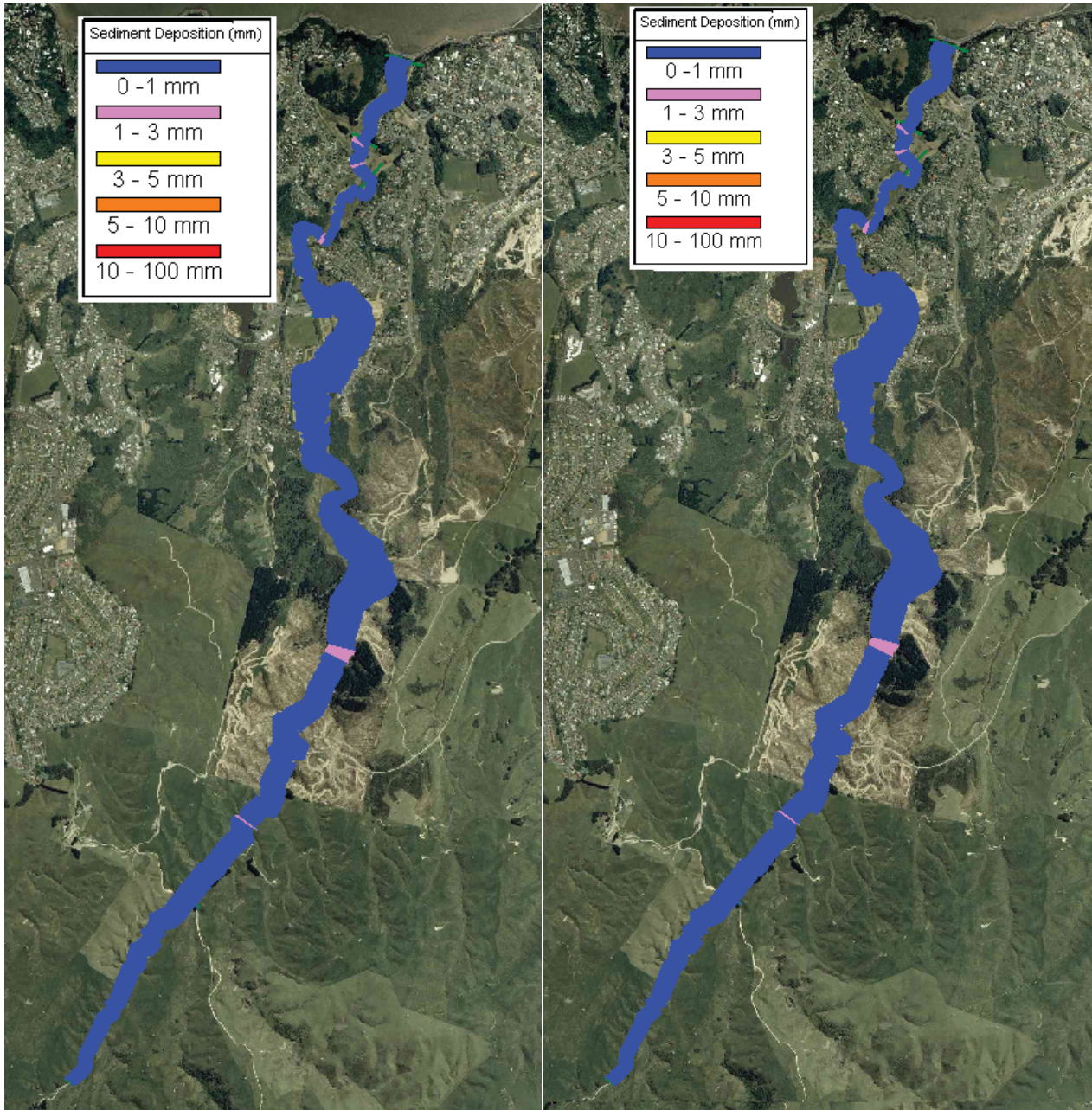


Figure T.13 – Duck Baseline to Peak Construction Comparison Q50

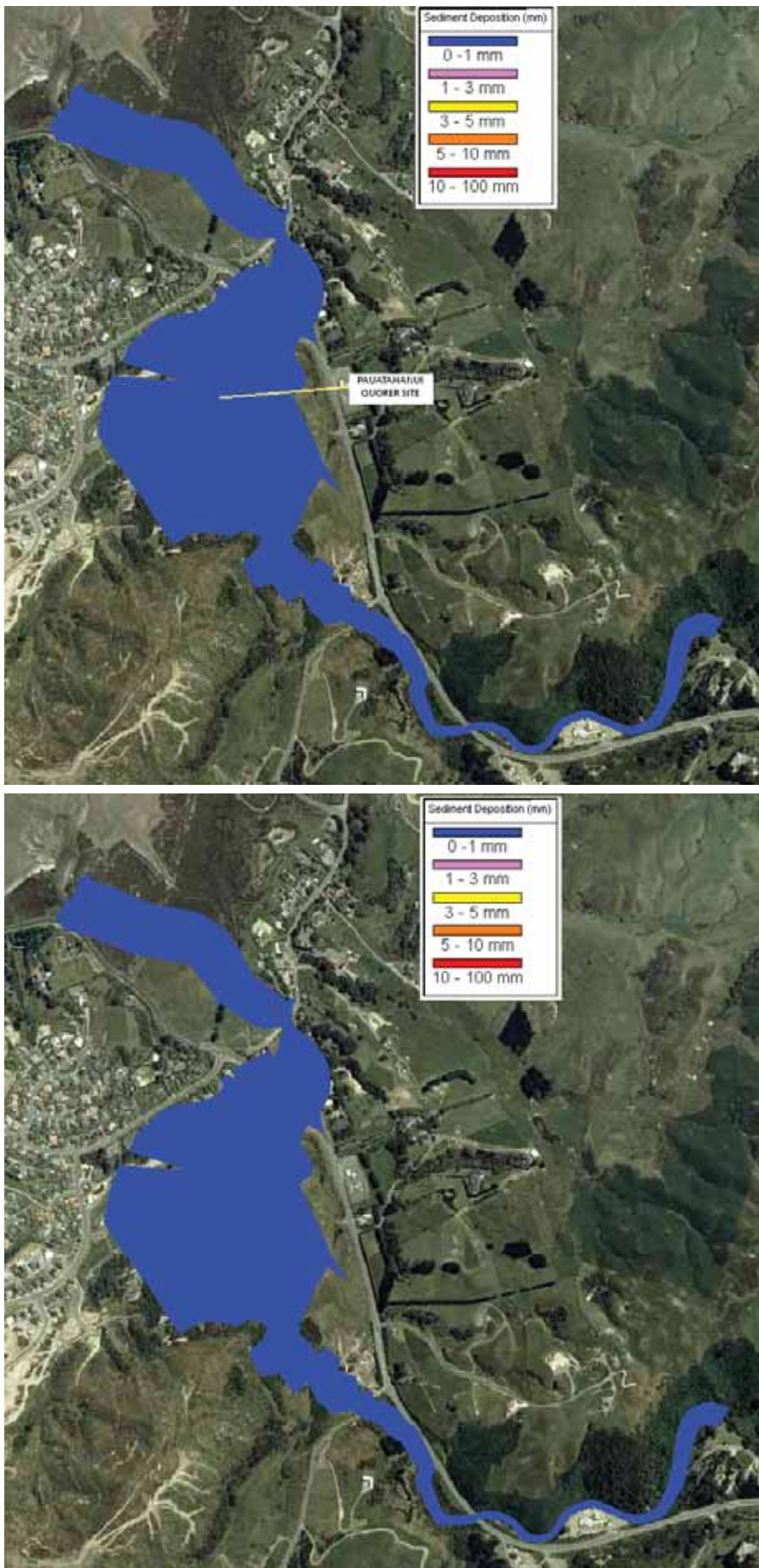


Figure T.14 – Pauatahanui Baseline to Peak Construction Comparison 1/3 of Q2

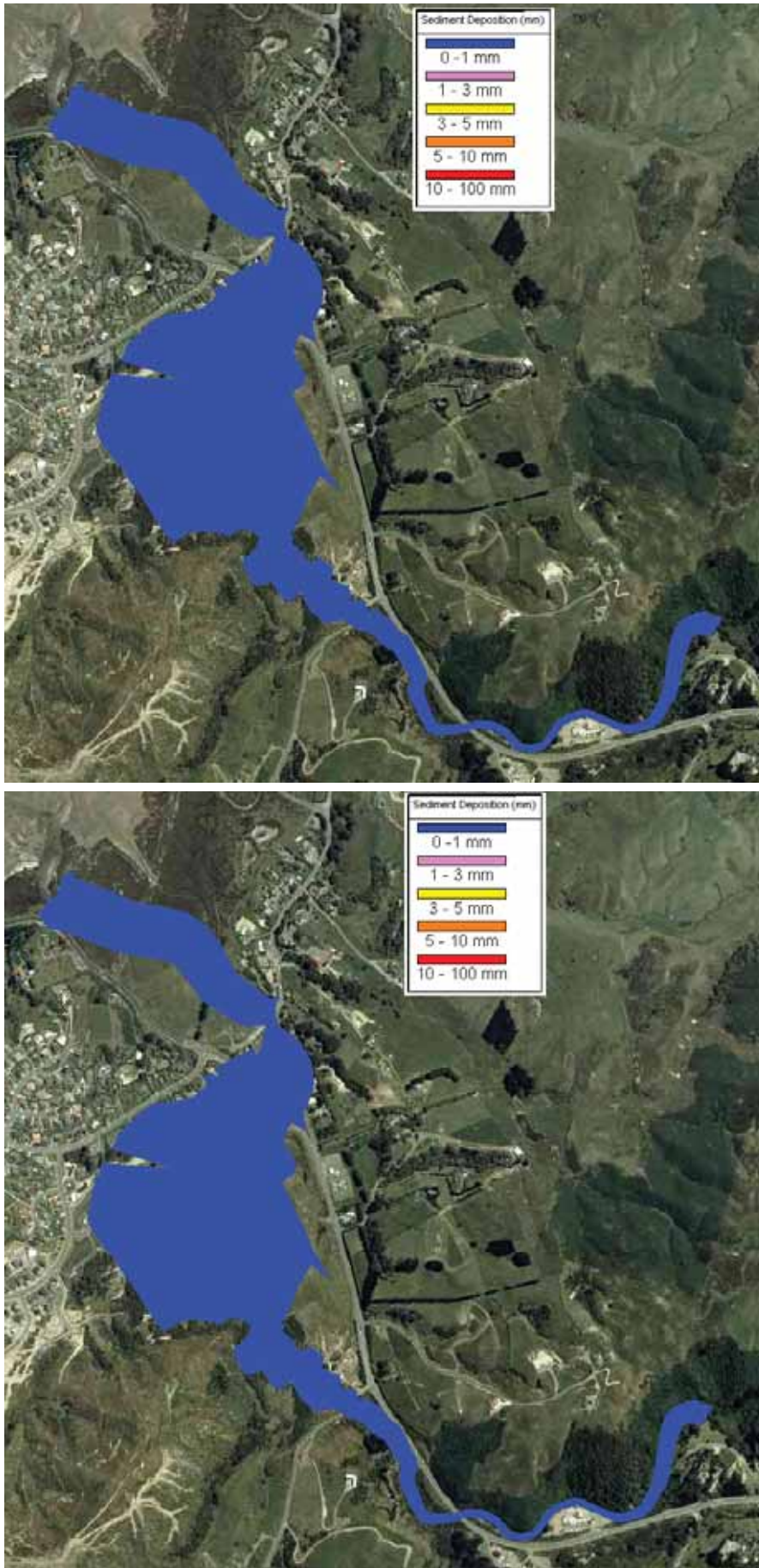


Figure T.15 – Pauatahanui Baseline to Peak Construction Comparison Q2

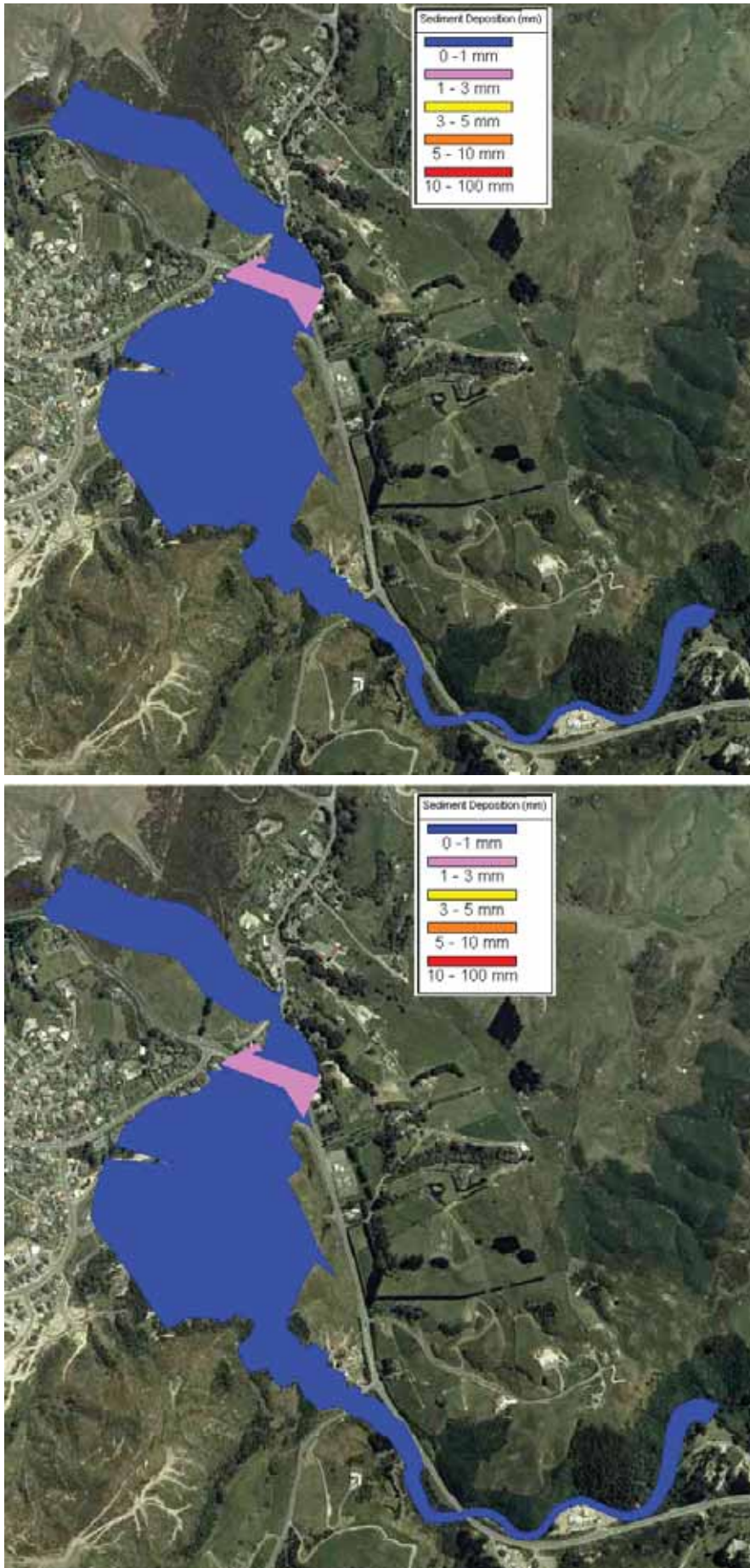


Figure T.16 – Pauatahanui Baseline to Peak Construction Comparison Q10

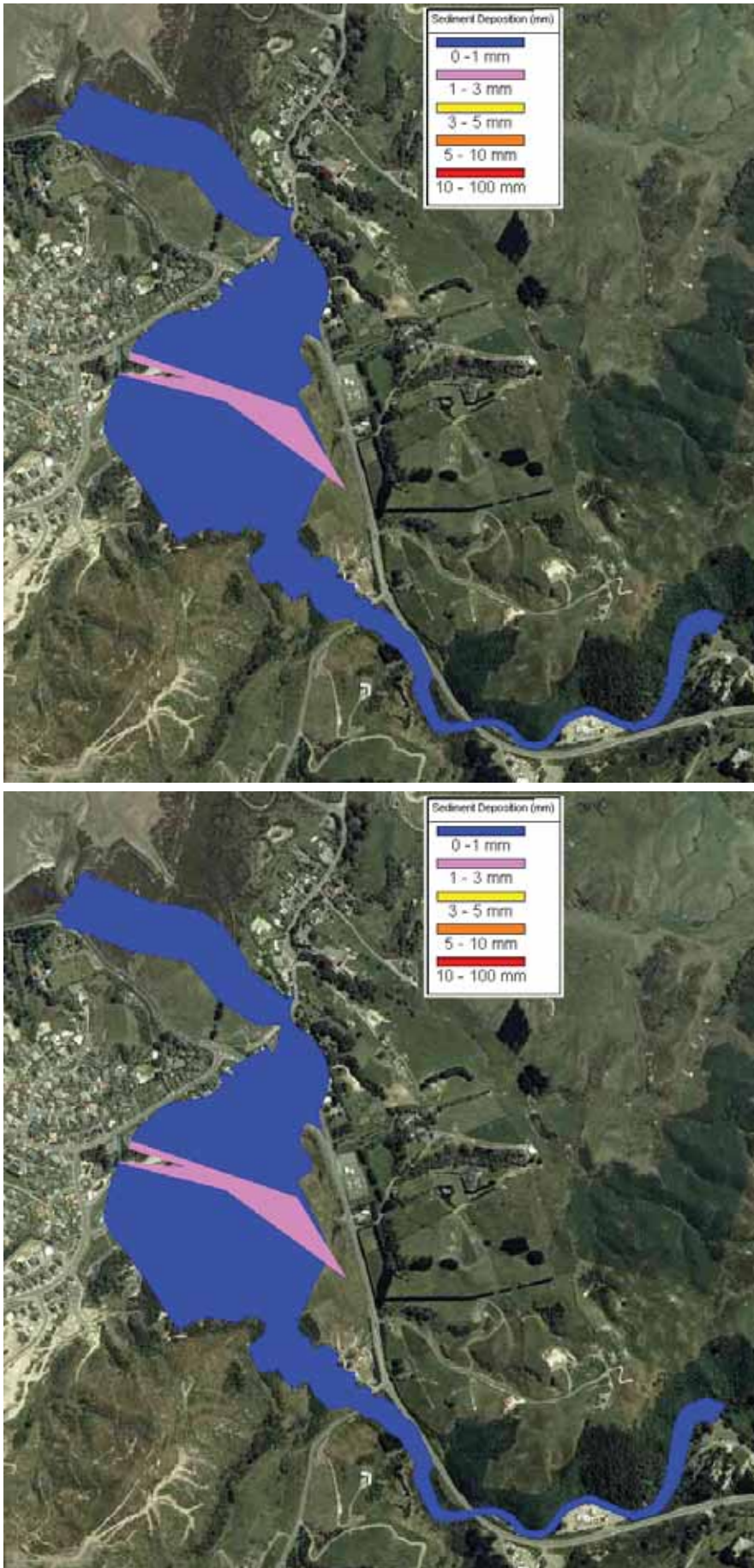


Figure T.17 – Pauatahanui Baseline to Peak Construction Comparison Q50

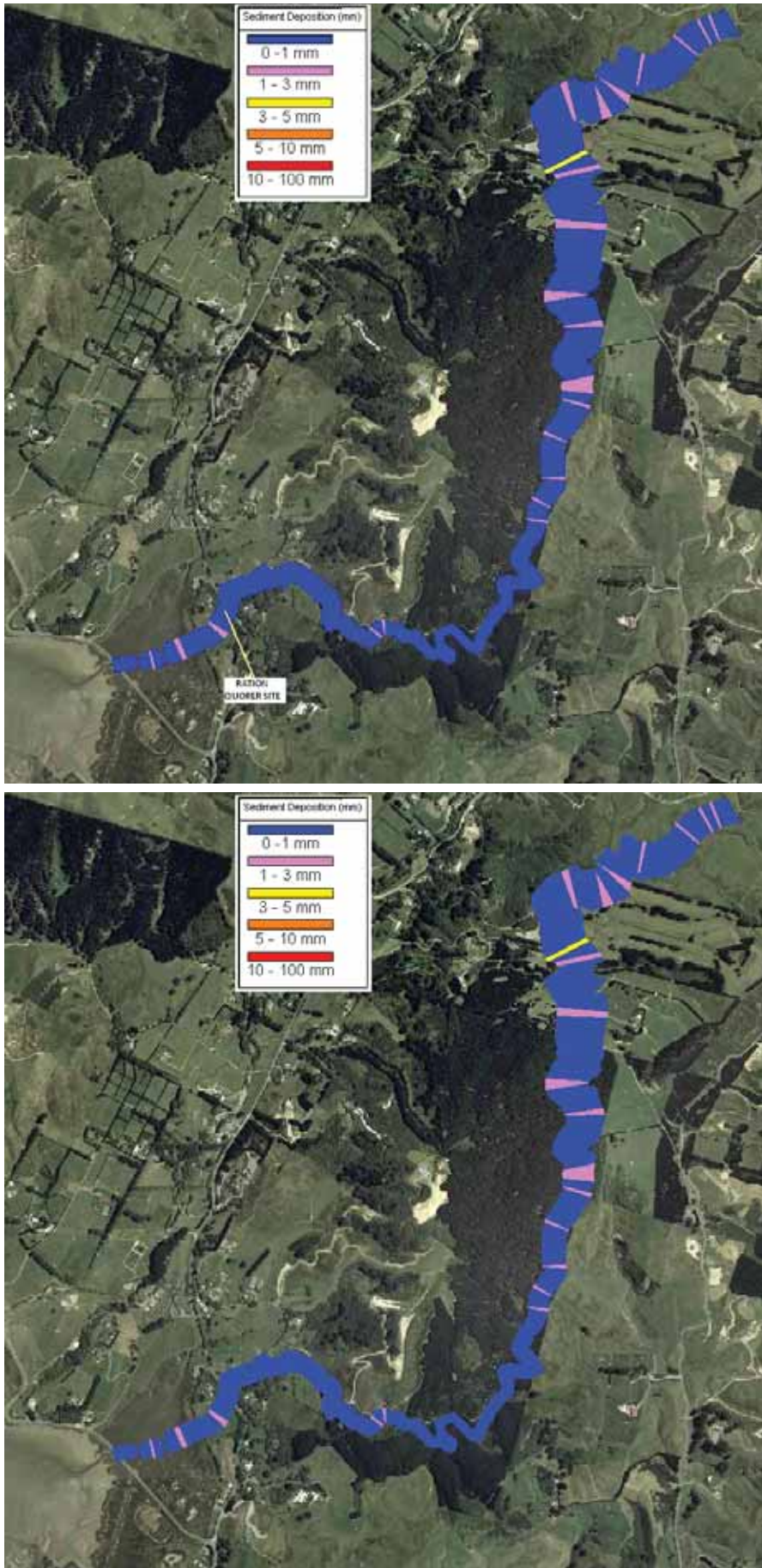


Figure T.18 – Ration Baseline to Peak Construction Comparison 1/3 of Q2

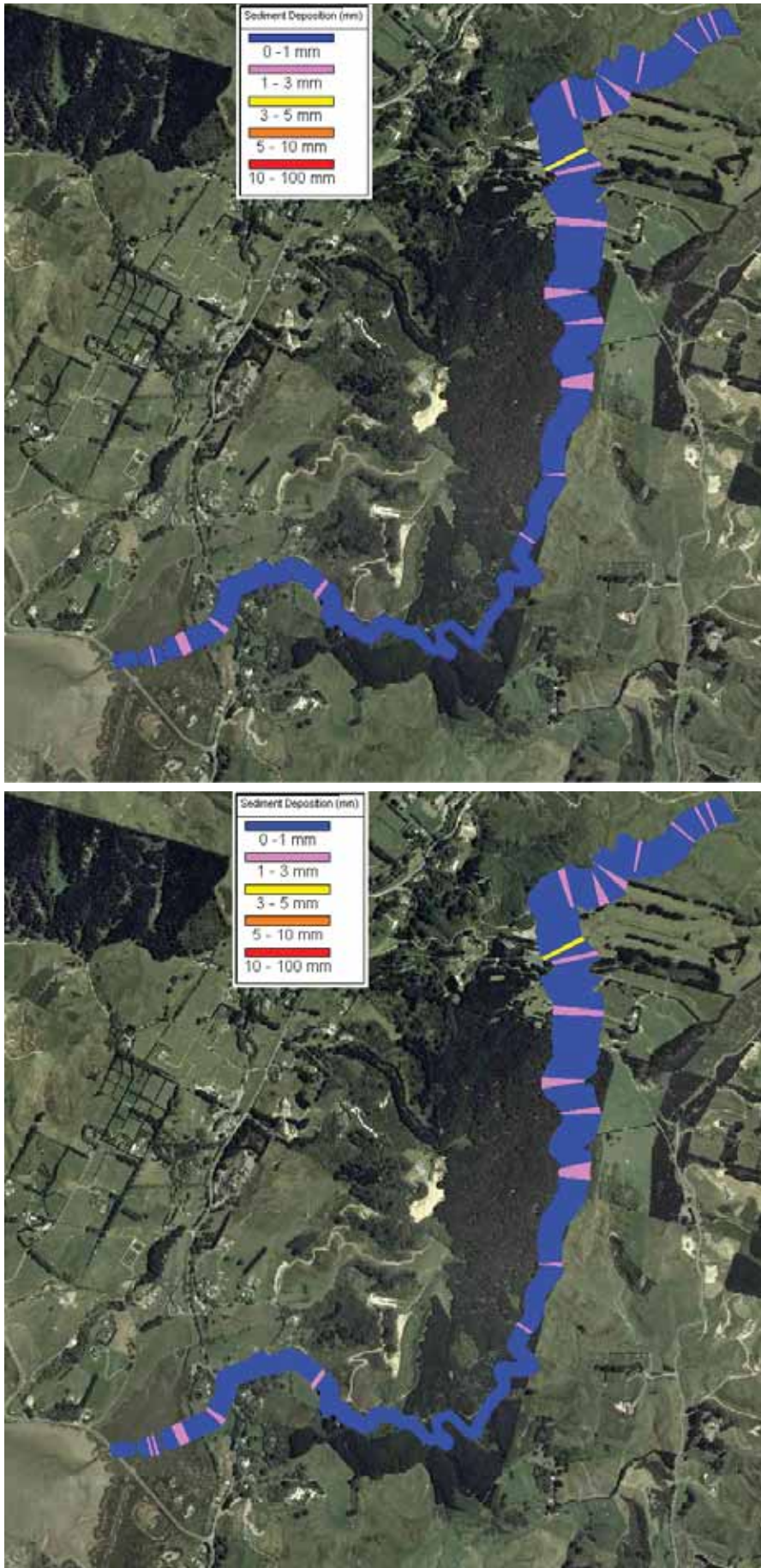


Figure T.19 – Ration Baseline to Peak Construction Comparison Q2

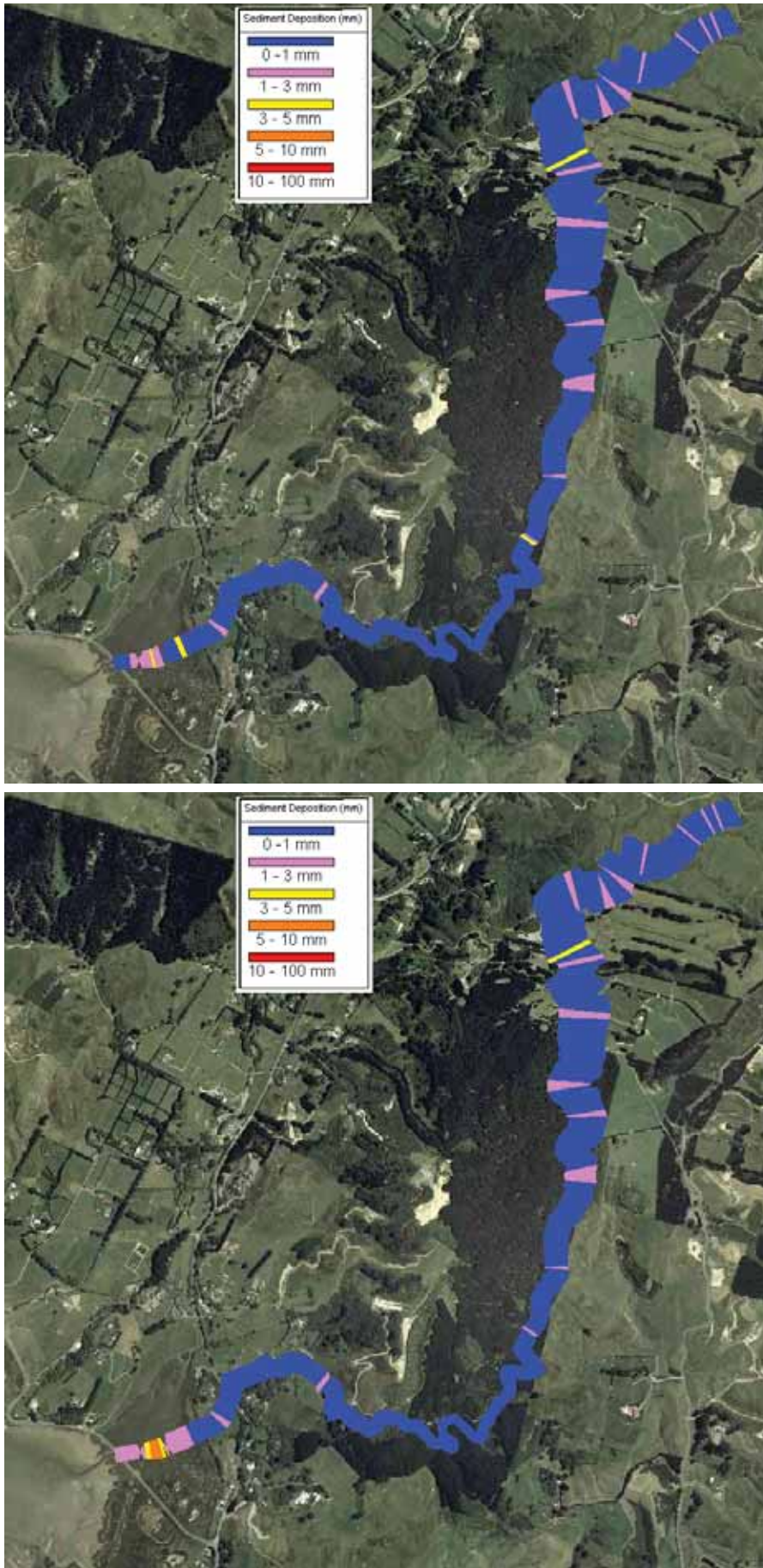


Figure T.20 – Ration Baseline to Peak Construction Comparison Q10

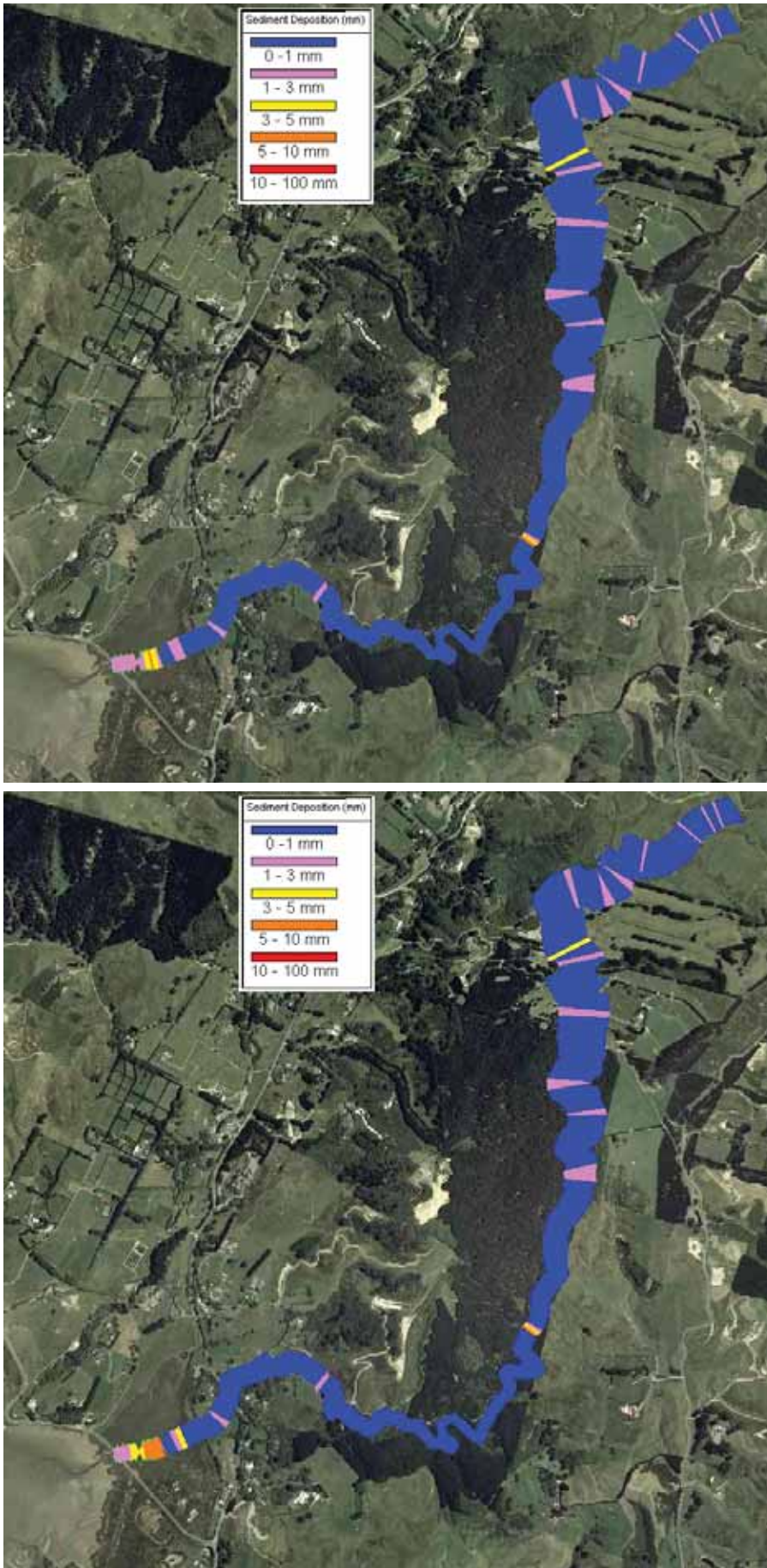


Figure T.21 – Ration Baseline to Peak Construction Comparison Q50

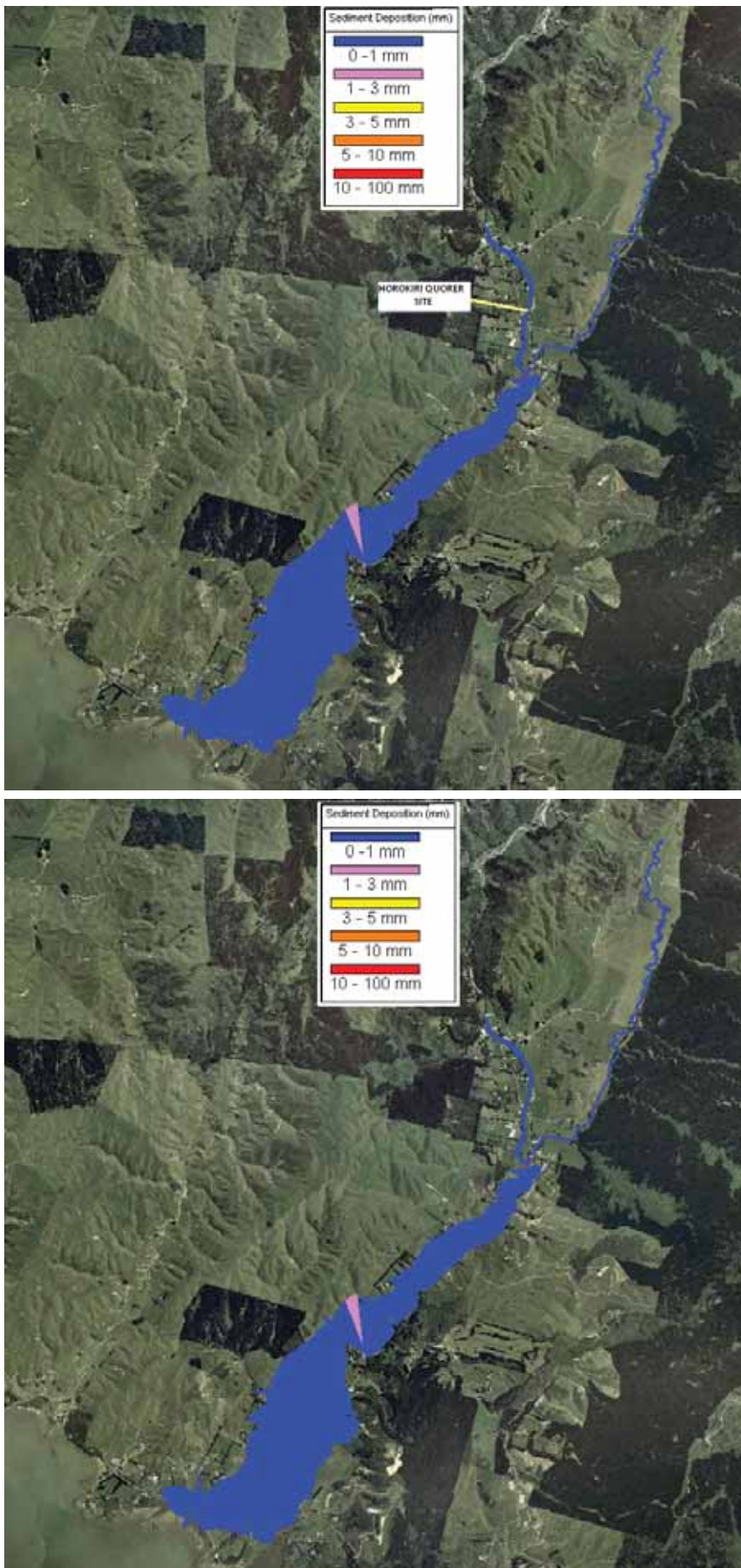


Figure T.22 – Horokiri Baseline to Peak Construction Comparison 1/3 of Q2

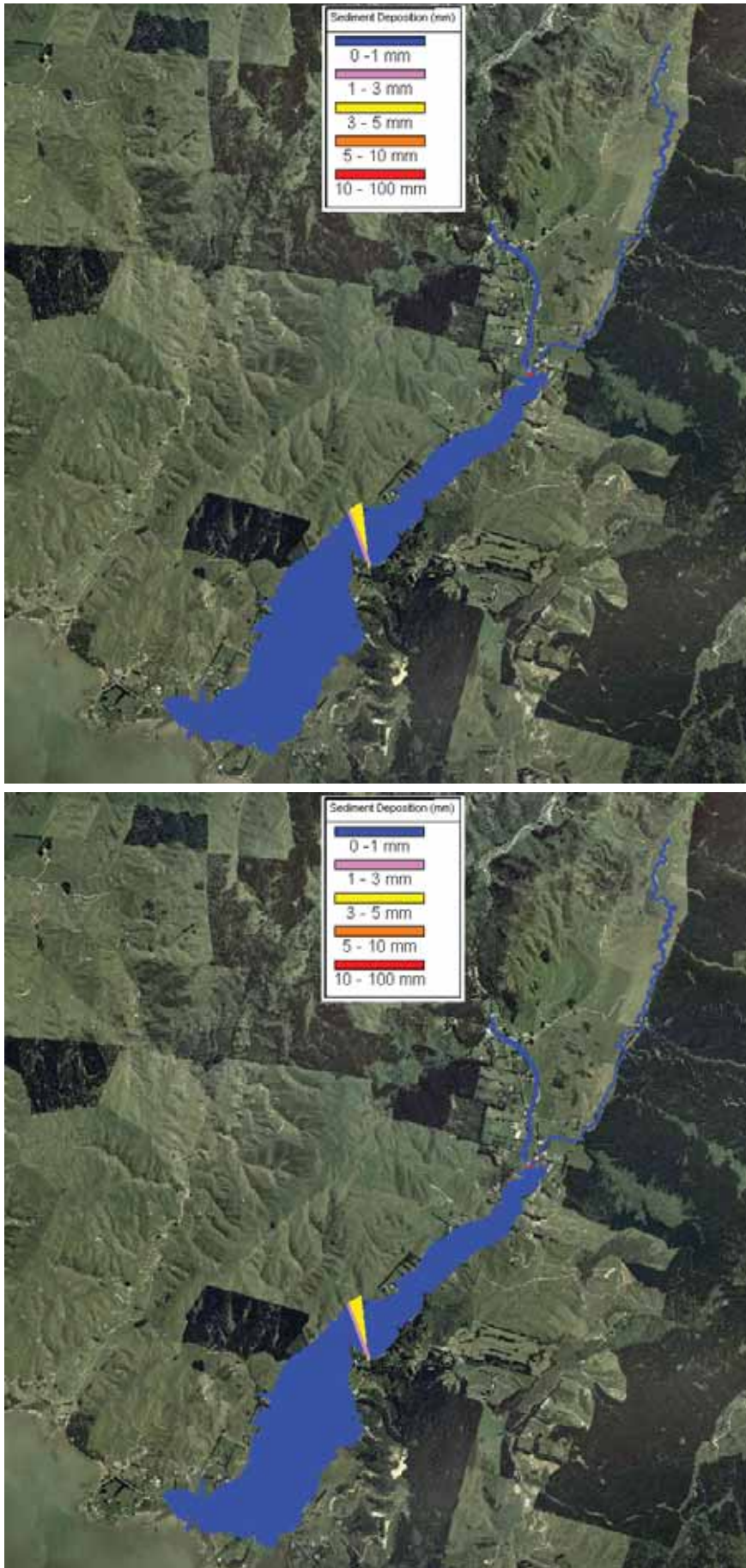


Figure T.23 – Horokiri Baseline to Peak Construction Comparison Q2

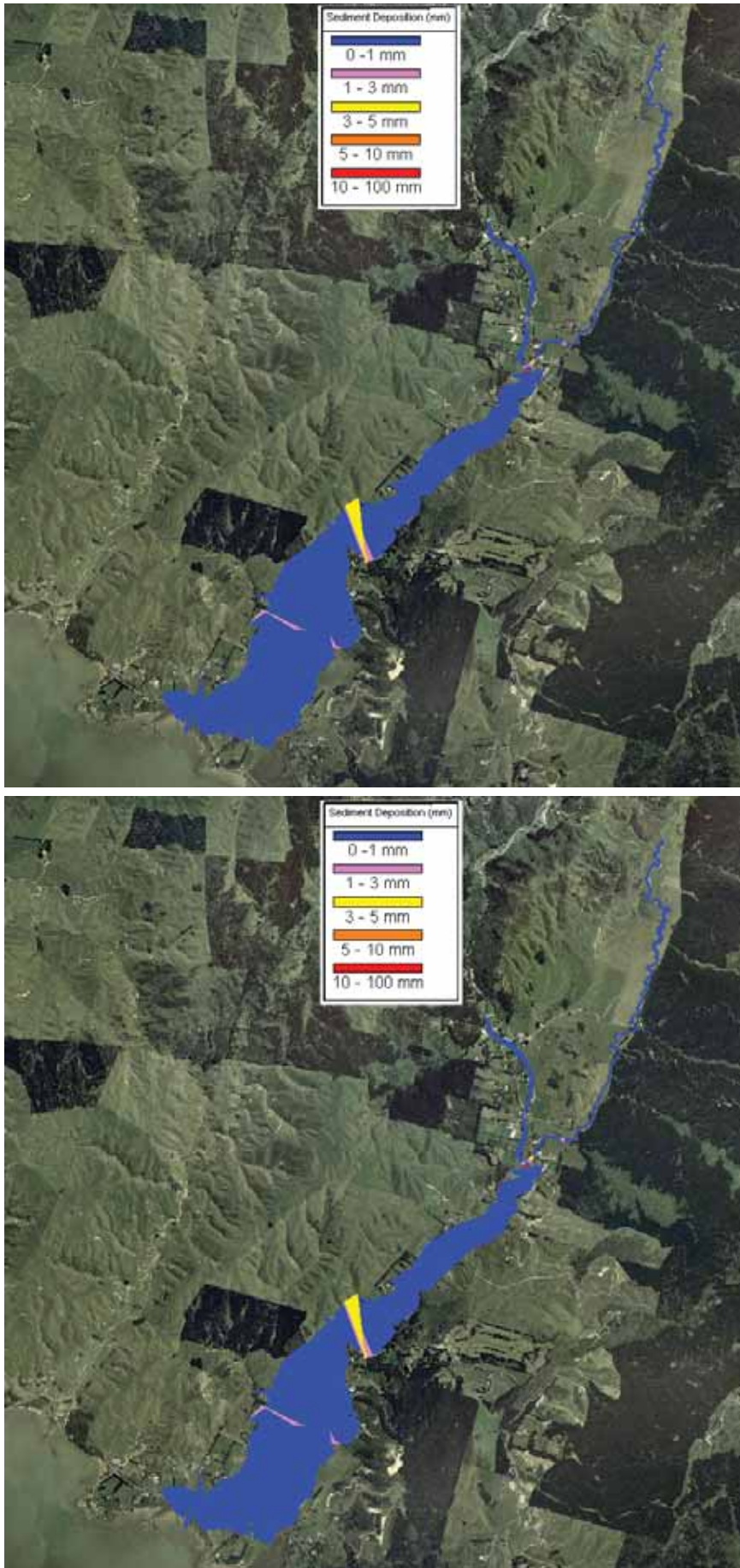


Figure T.24 – Horokiri Baseline to Peak Construction Comparison Q10

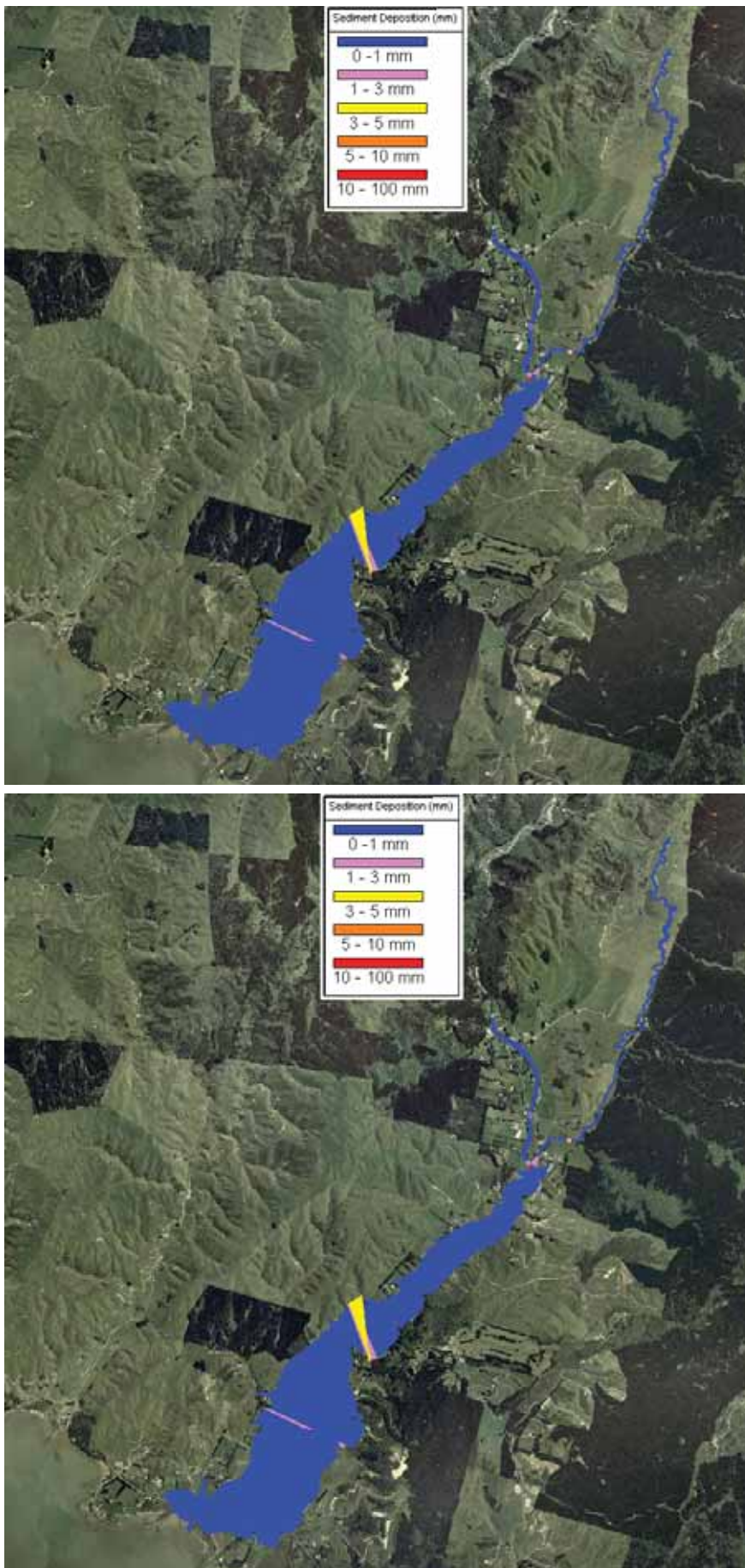


Figure T.25 – Horokiri Baseline to Peak Construction Comparison Q50

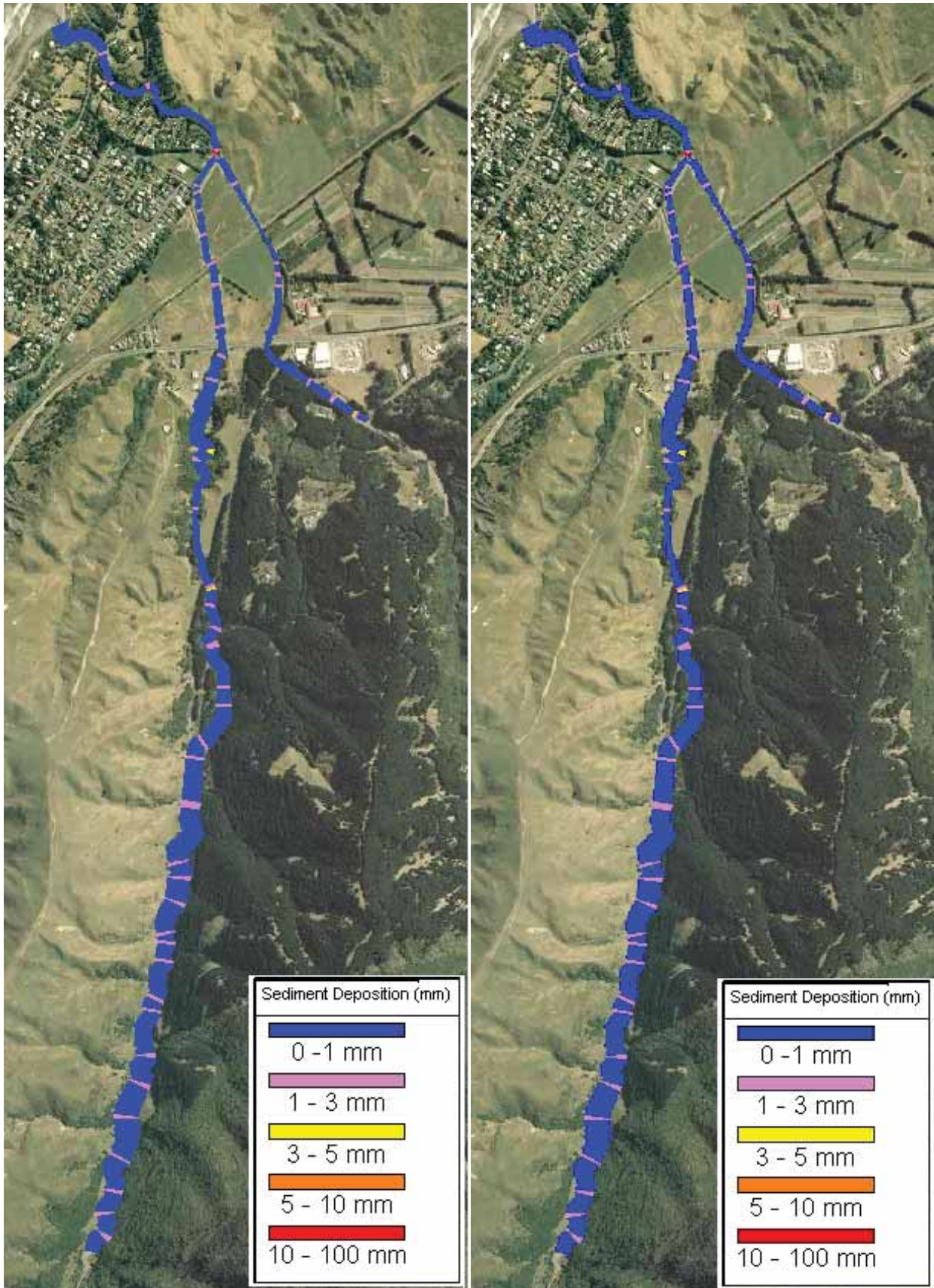


Figure T.26 – Wainui/Te Puka Baseline to Peak Construction Comparison 1/3 of Q2

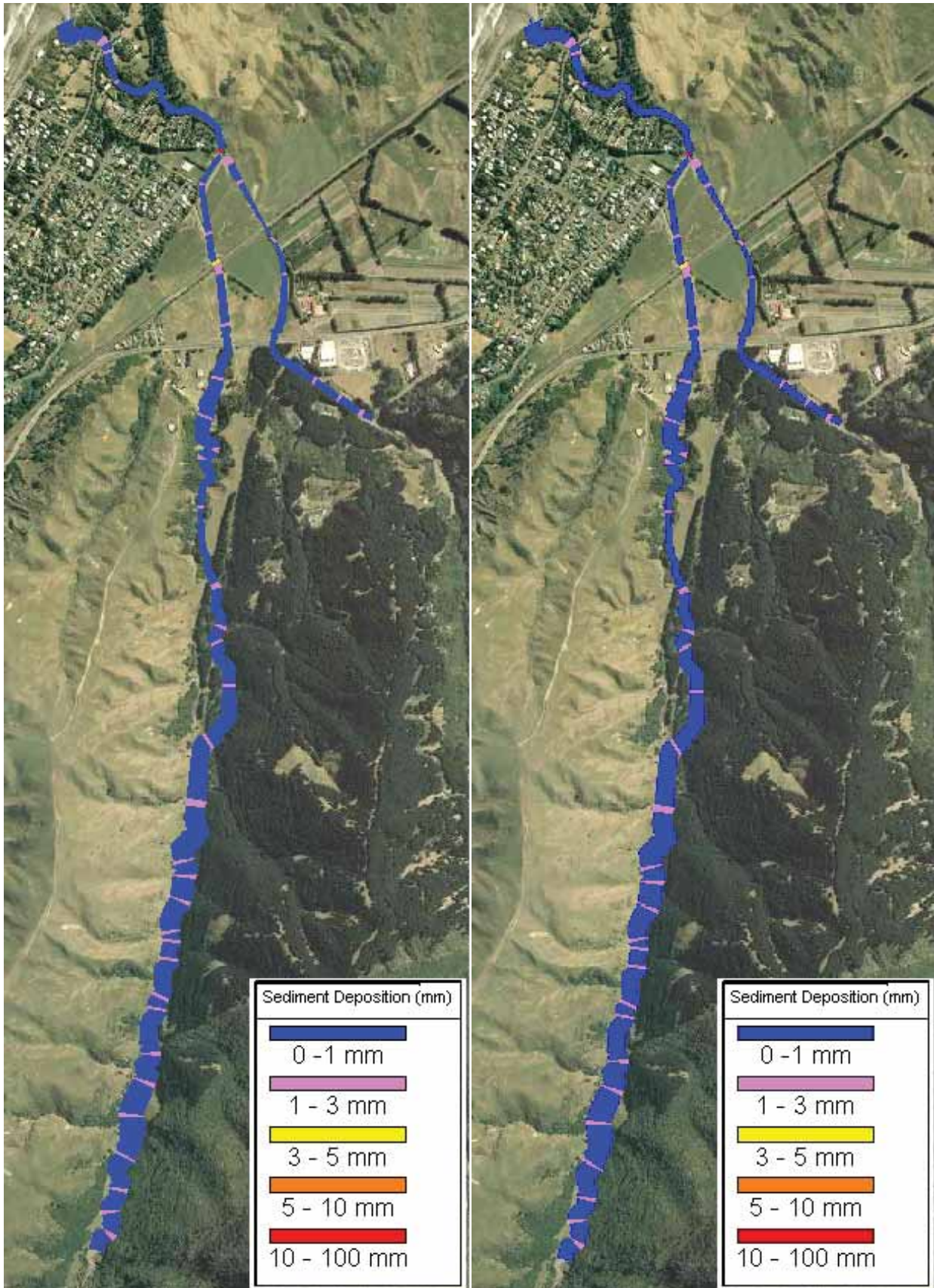


Figure T.27 – Wainui/Te Puka Baseline to Peak Construction Comparison Q2

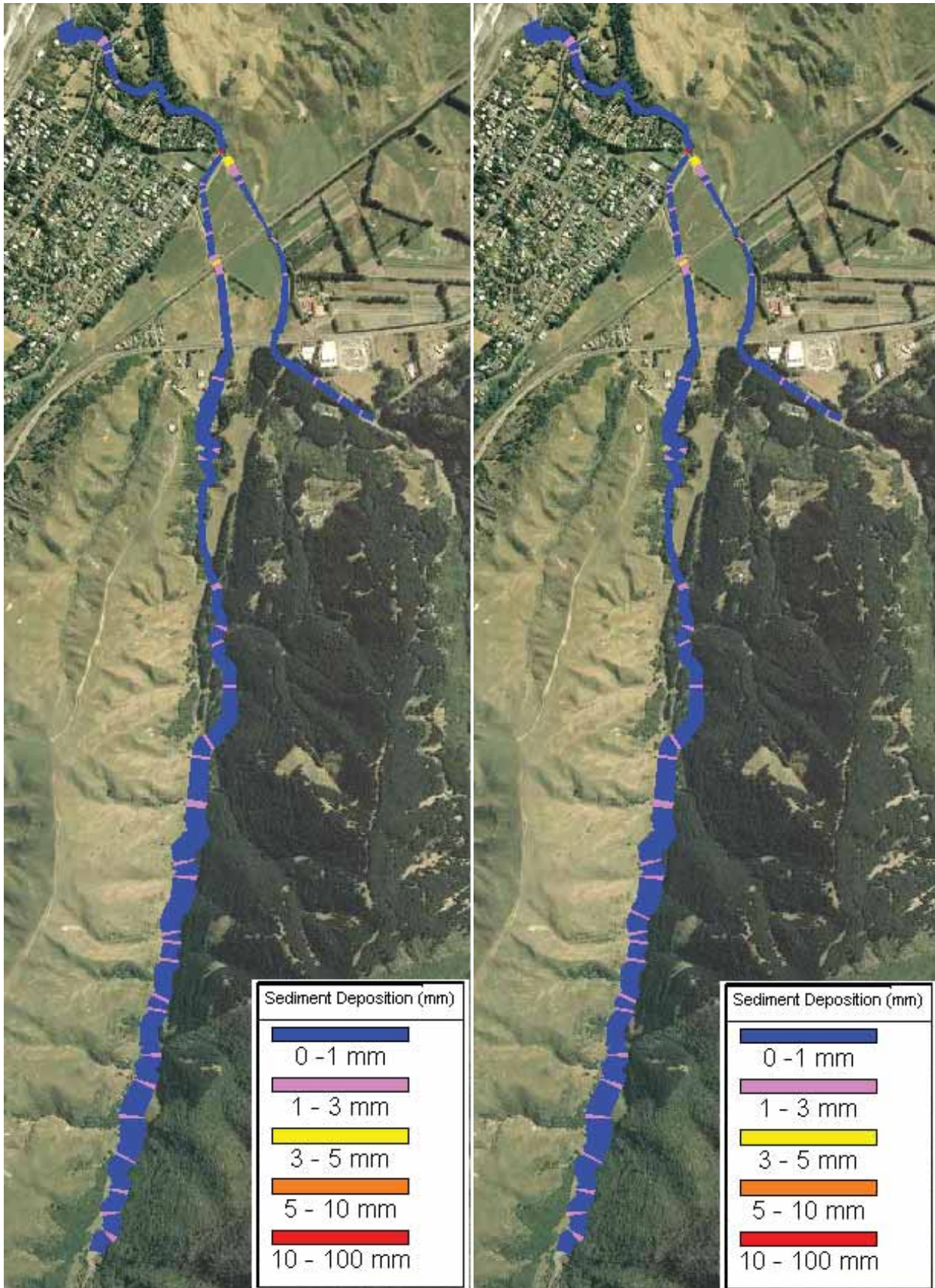


Figure T.28 – Wainui/Te Puka Baseline to Peak Construction Comparison Q10

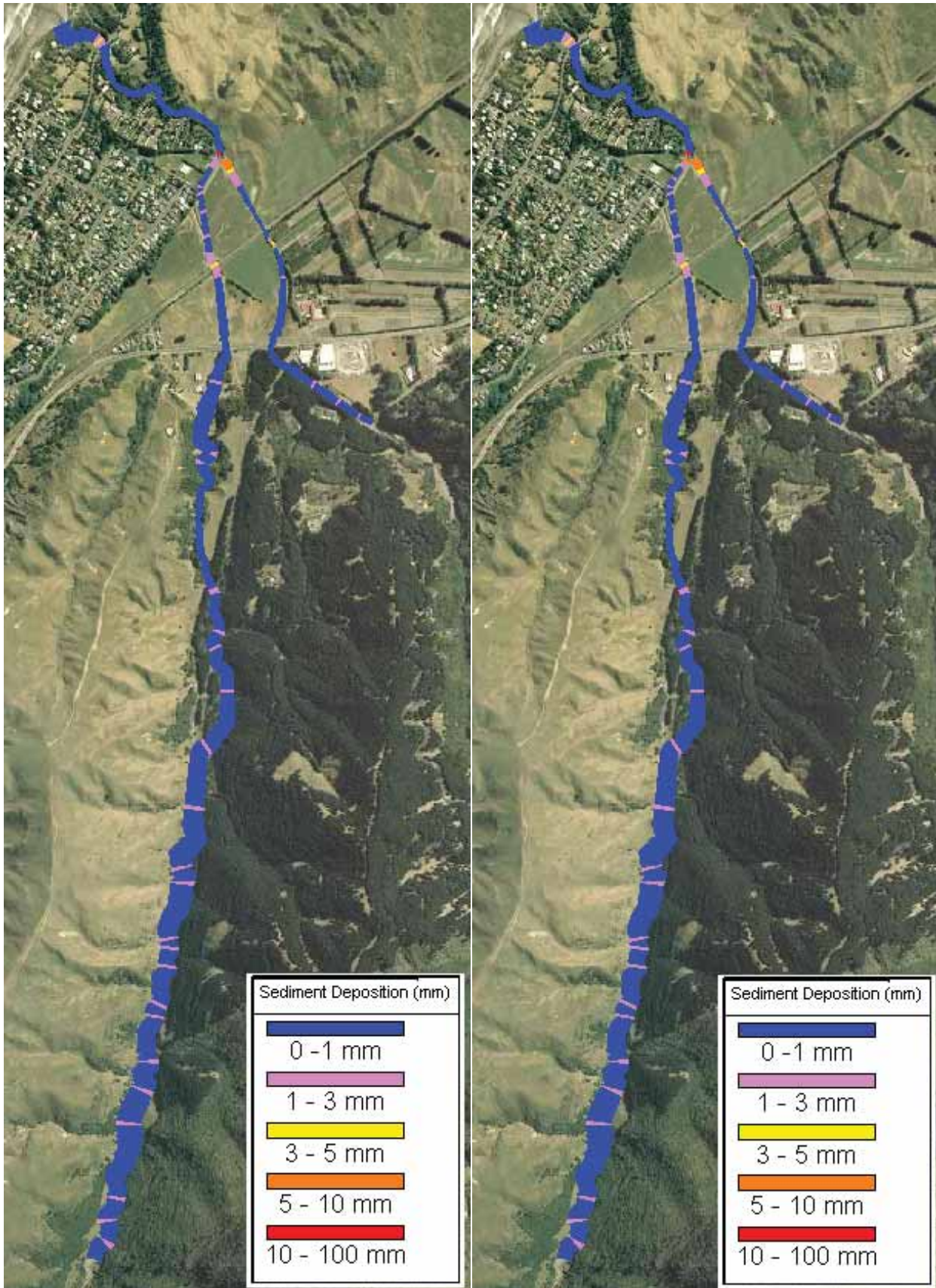


Figure T.29 – Wainui/Te Puka Baseline to Peak Construction Comparison Q50

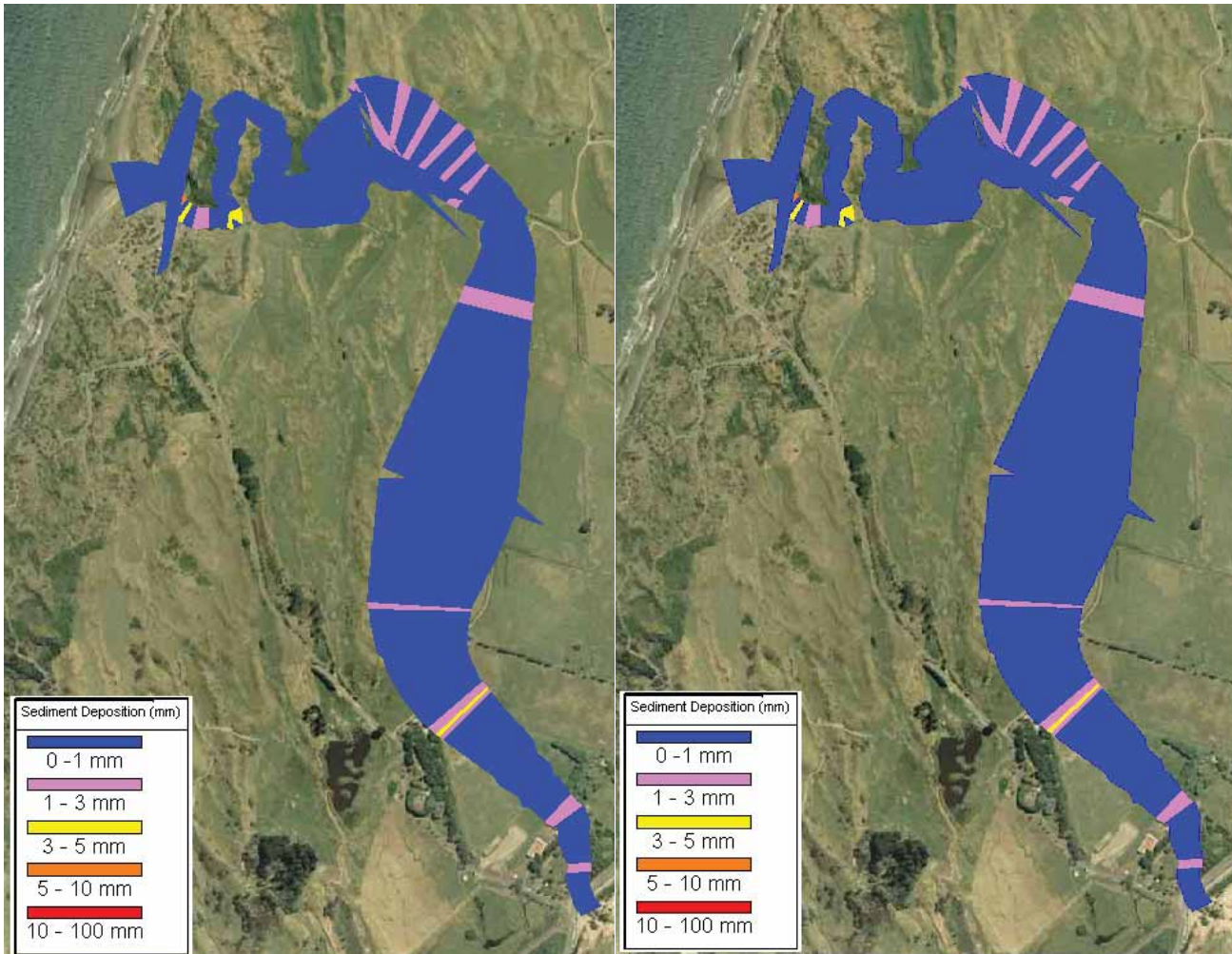


Figure T.30 – Whareroa Baseline to Peak Construction Comparison 1/3 of Q2

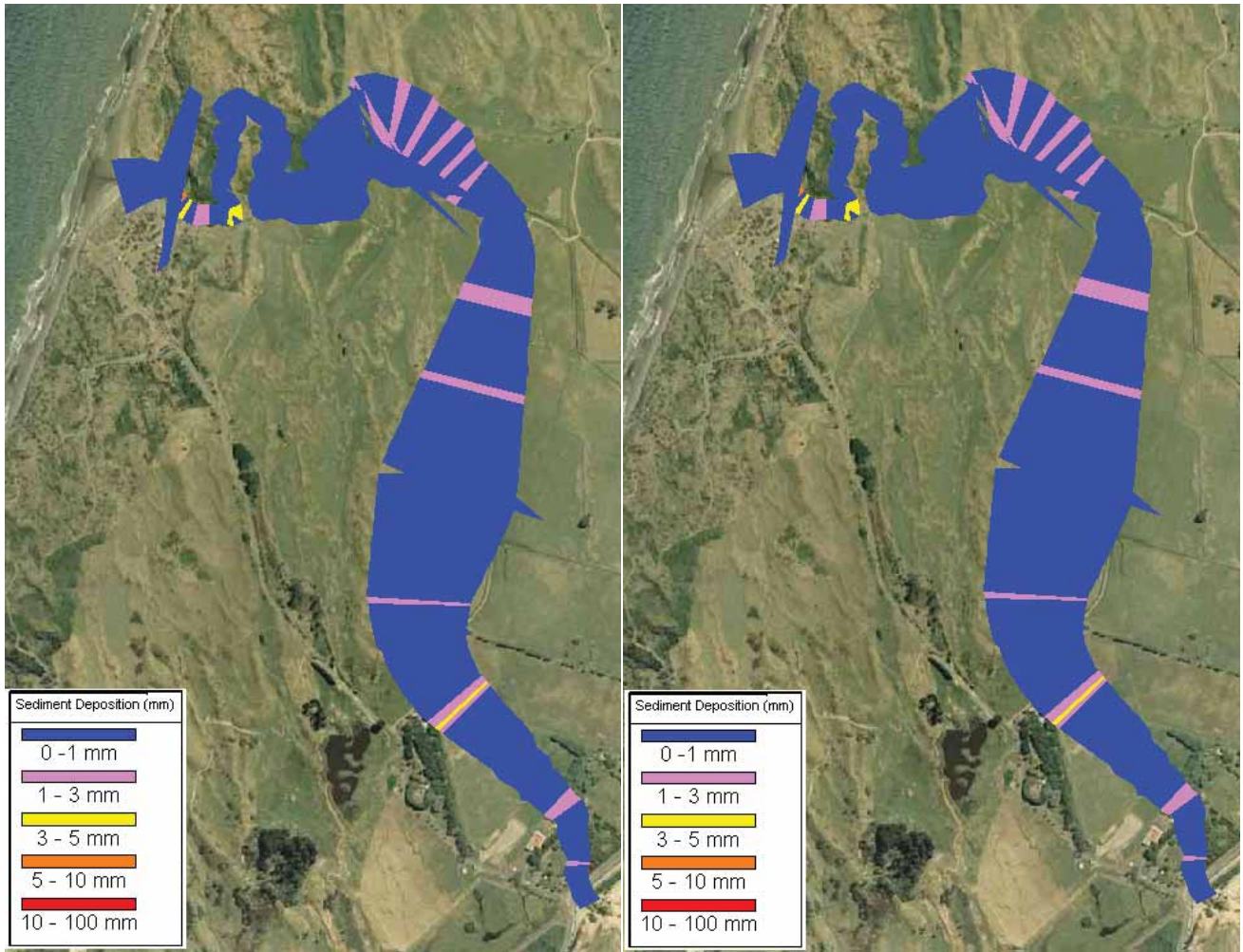


Figure T.31 – Whareroa Baseline to Peak Construction Comparison Q2

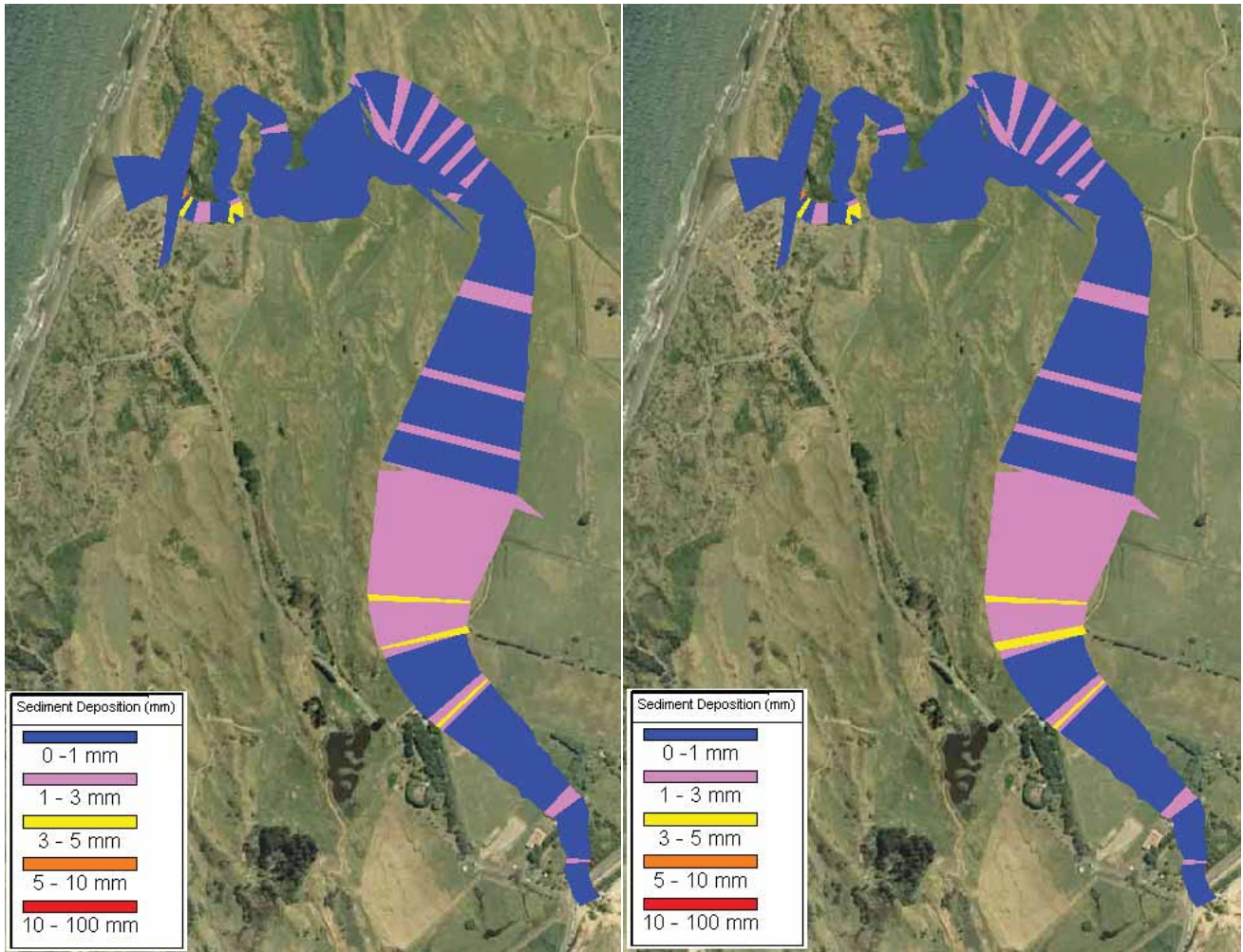


Figure T.32 – Whareroa Baseline to Peak Construction Comparison Q10

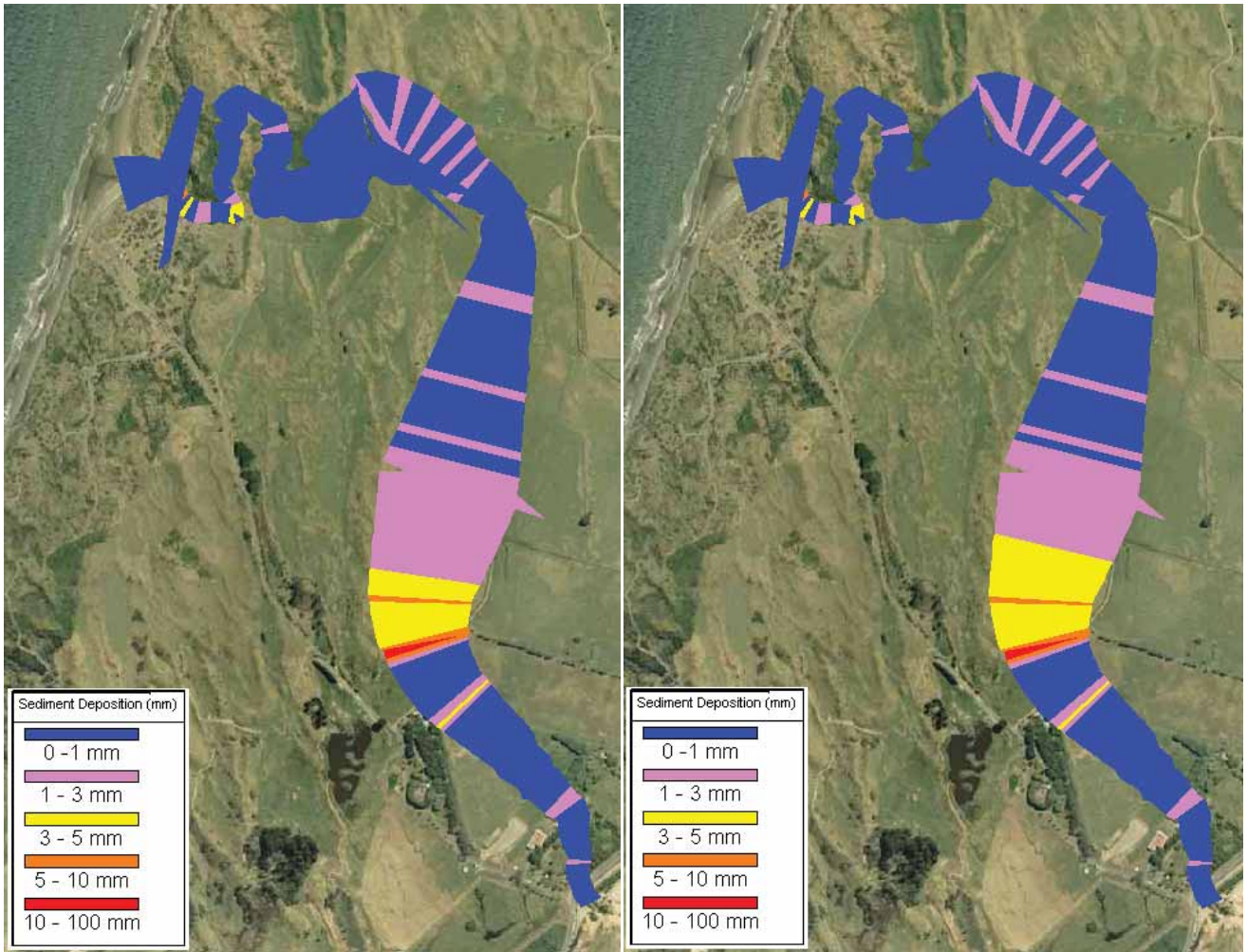


Figure T.33 – Whareroa Baseline to Peak Construction Comparison Q50