


**APPENDIX A – UPDATED AVAILABILITY AND OUTAGE STATE
MAPS (FIGURES 2-5) – DECEMBER 2011**



Availability State

- 6 - Closed and affecting opposite carriageway
- 5 - Closed
- 4 - Difficult
- 3 - Single Lane
- 2 - Poor
- 1 - Full

References:
 Availability State for Earthquake Event - 09/05/08 (Date Captured)
 - 12/16/2011 (Date Updated)

Title: Availability State - Wellington Fault Event		
Project: Contract 233PN - Transmission Gully Route Security Study		
Prepared for:  NZ TRANSPORT AGENCY WAKA KOTAHĪ		
Prepared by:  OPUS		
Job No: 5-C1101.10	Date: Dec 2011	Figure: 2





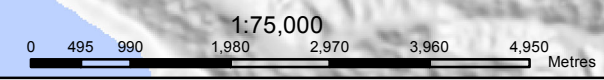


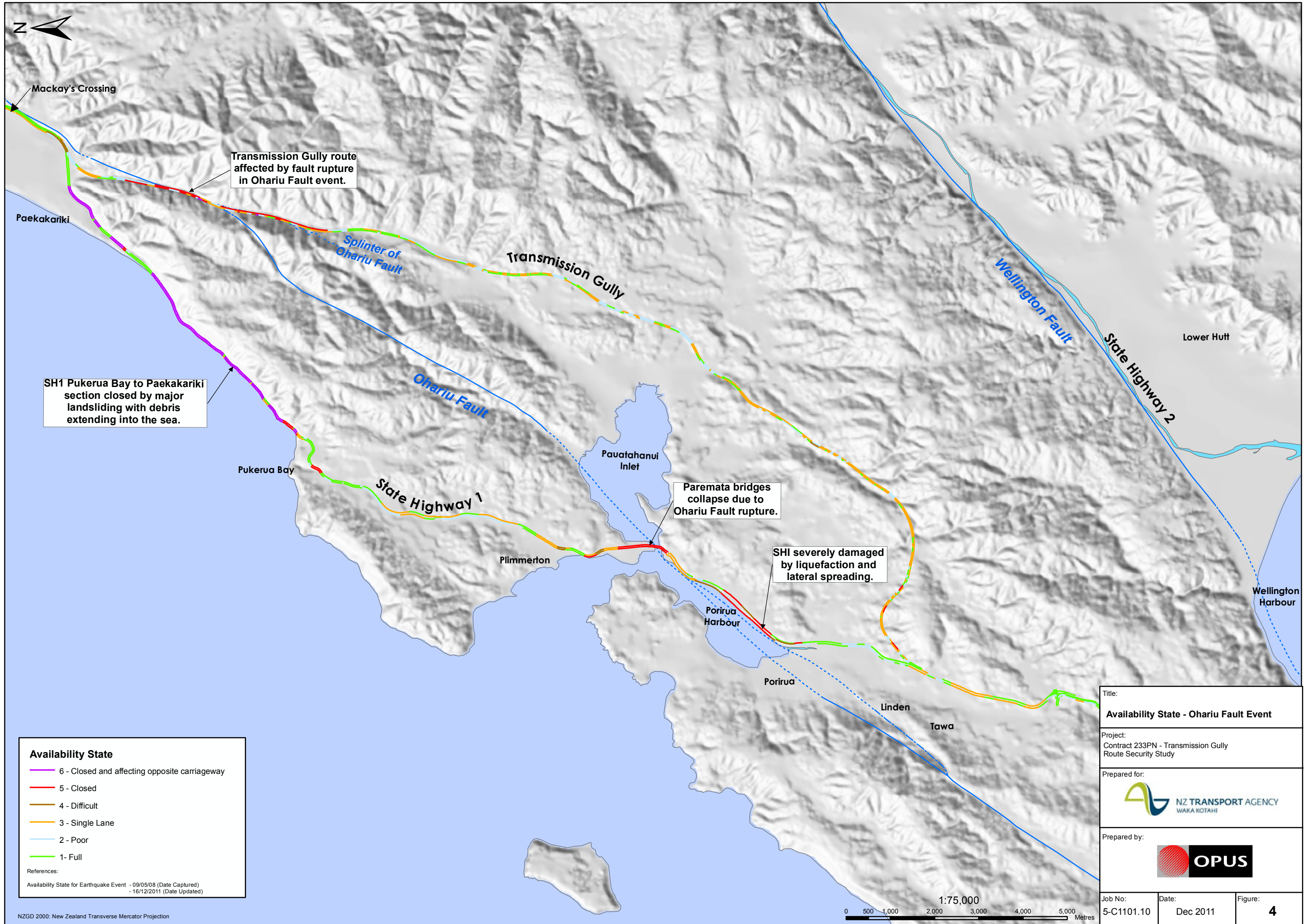
Outage State

- 6 - Very Long Term (> 6 months)
- 5 - Long Term (3 - 6 months)
- 4 - Severe (2 weeks to 3 months)
- 3 - Moderate (3 days to 2 weeks)
- 2 - Minor (up to 3 days)
- 1 - Open (no closure)

References:
 Availability State for Earthquake Event -09/05/08 (Date Captured)
 - 16/12/2011 (Date Updated)

Title: Outage State - Wellington Fault Event		
Project: Contract 233PN - Transmission Gully Route Security Study		
Prepared for:  NZ TRANSPORT AGENCY WAKA KOTAHĪ		
Prepared by:  OPUS		
Job No: 5-C1101.10	Date: Dec 2011	Figure: 3



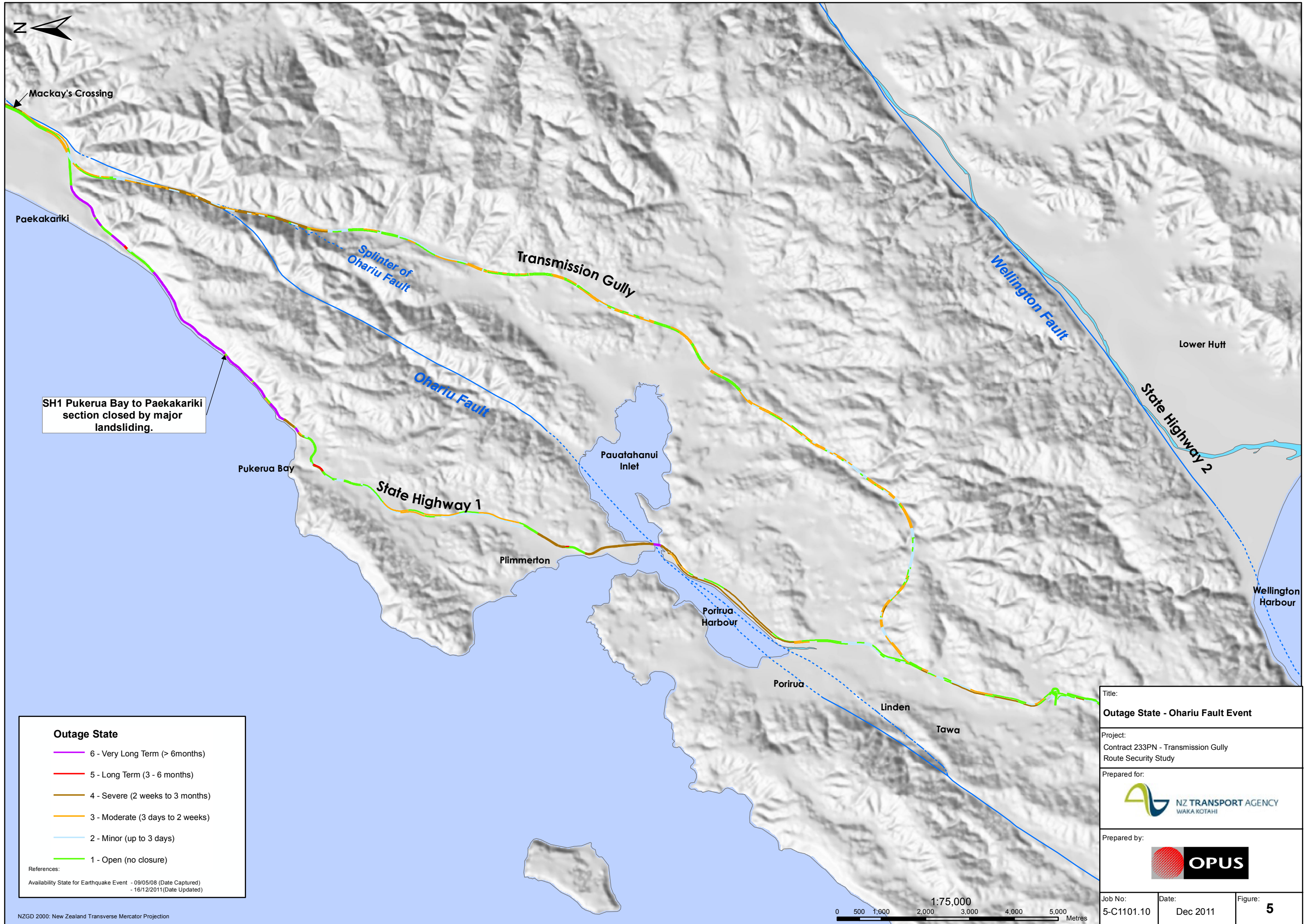


Availability State

- 6 - Closed and affecting opposite carriageway
- 5 - Closed
- 4 - Difficult
- 3 - Single Lane
- 2 - Poor
- 1 - Full

References:
 Availability State for Earthquake Event - 09/05/08 (Date Captured)
 - 16/12/2011 (Date Updated)

Title: Availability State - Ohariu Fault Event		
Project: Contract 233PN - Transmission Gully Route Security Study		
Prepared for:  NZ TRANSPORT AGENCY WAKA KOTAHĪ		
Prepared by:  OPUS		
Job No: 5-C1101.10	Date: Dec 2011	Figure: 4



SH1 Pukerua Bay to Paekakariki section closed by major landsliding.

Outage State

- 6 - Very Long Term (> 6 months)
- 5 - Long Term (3 - 6 months)
- 4 - Severe (2 weeks to 3 months)
- 3 - Moderate (3 days to 2 weeks)
- 2 - Minor (up to 3 days)
- 1 - Open (no closure)

References:
 Availability State for Earthquake Event - 09/05/08 (Date Captured)
 - 16/12/2011 (Date Updated)

Title: Outage State - Ohariu Fault Event		
Project: Contract 233PN - Transmission Gully Route Security Study		
Prepared for: NZ TRANSPORT AGENCY WAKA KOTAHĪ		
Prepared by: OPUS		
Job No: 5-C1101.10	Date: Dec 2011	Figure: 5

