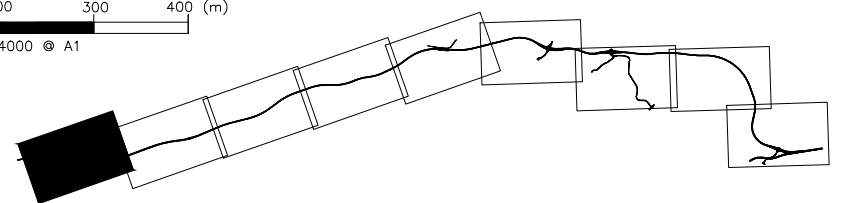
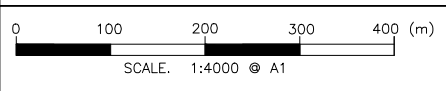
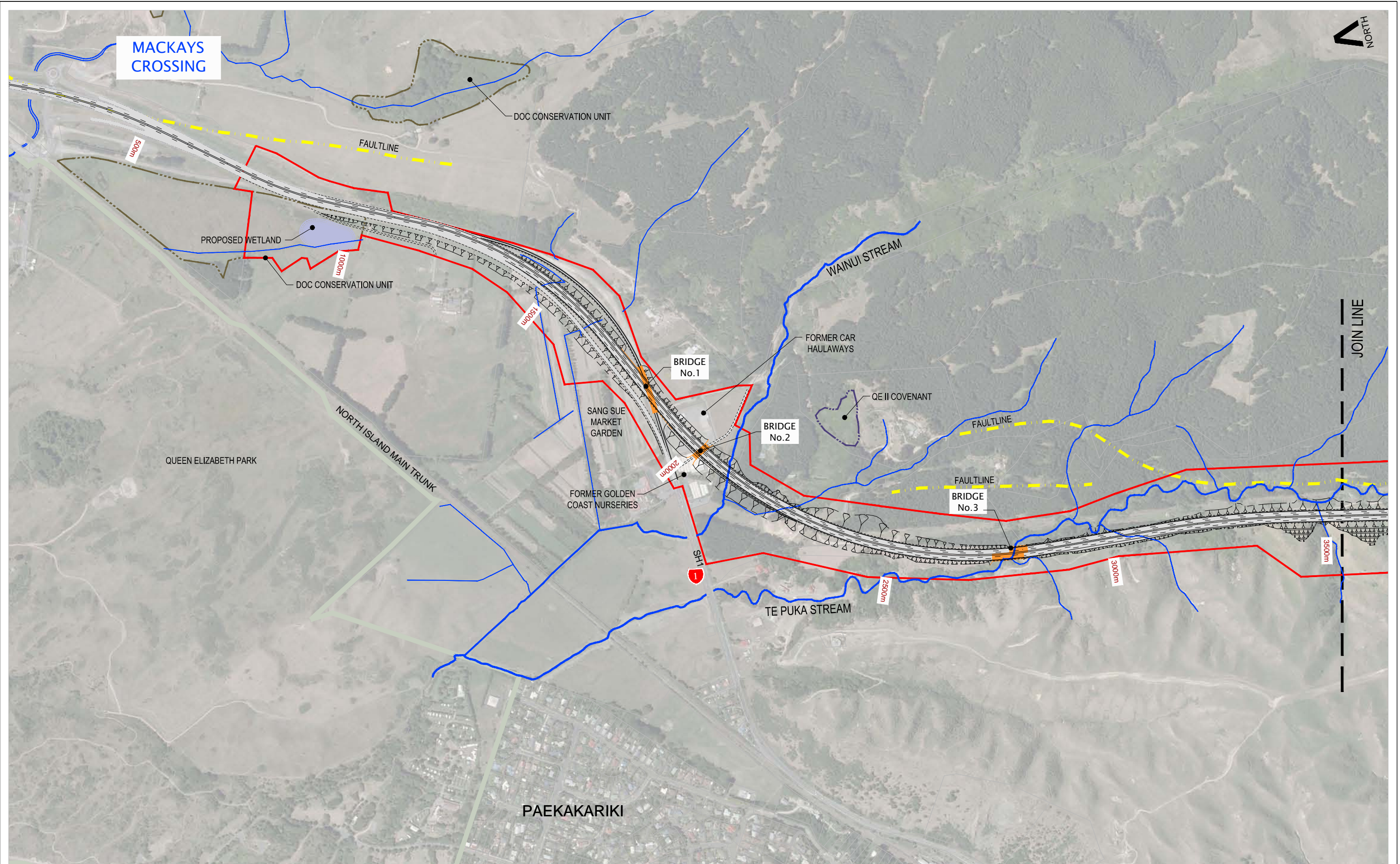


SECTION 1 - MACKAYS CROSSING	0m to 3500m
SECTION 2 - WAINUI SADDLE	3500m to 6500m
SECTION 3 - HOROKIRI STREAM	6500m to 9500m
SECTION 4 - BATTLE HILL	9500m to 12500m
SECTION 5 - GOLF COURSE	12500m to 15500m
SECTION 6 - STATE HIGHWAY 58	15500m to 18500m
SECTION 7 - JAMES COOK	18500m to 21500m
SECTION 8 - CANNONS CREEK	21500m to 24900m
SECTION 9 - LINDEN	24900m to 28050m

Revision	Amendment	Approved	Date
B	MINOR AMENDMENTS	MAE	07/2011
A	ISSUED FOR EPA REVIEW	MAE	04/2011



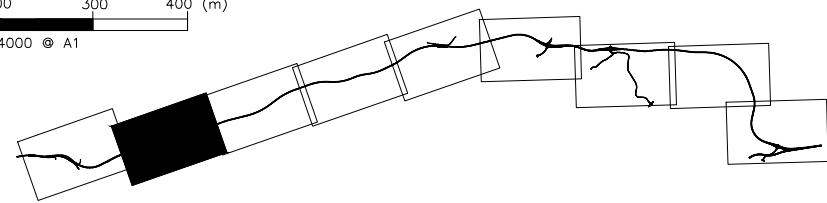
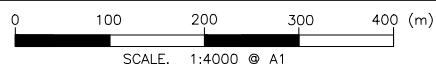
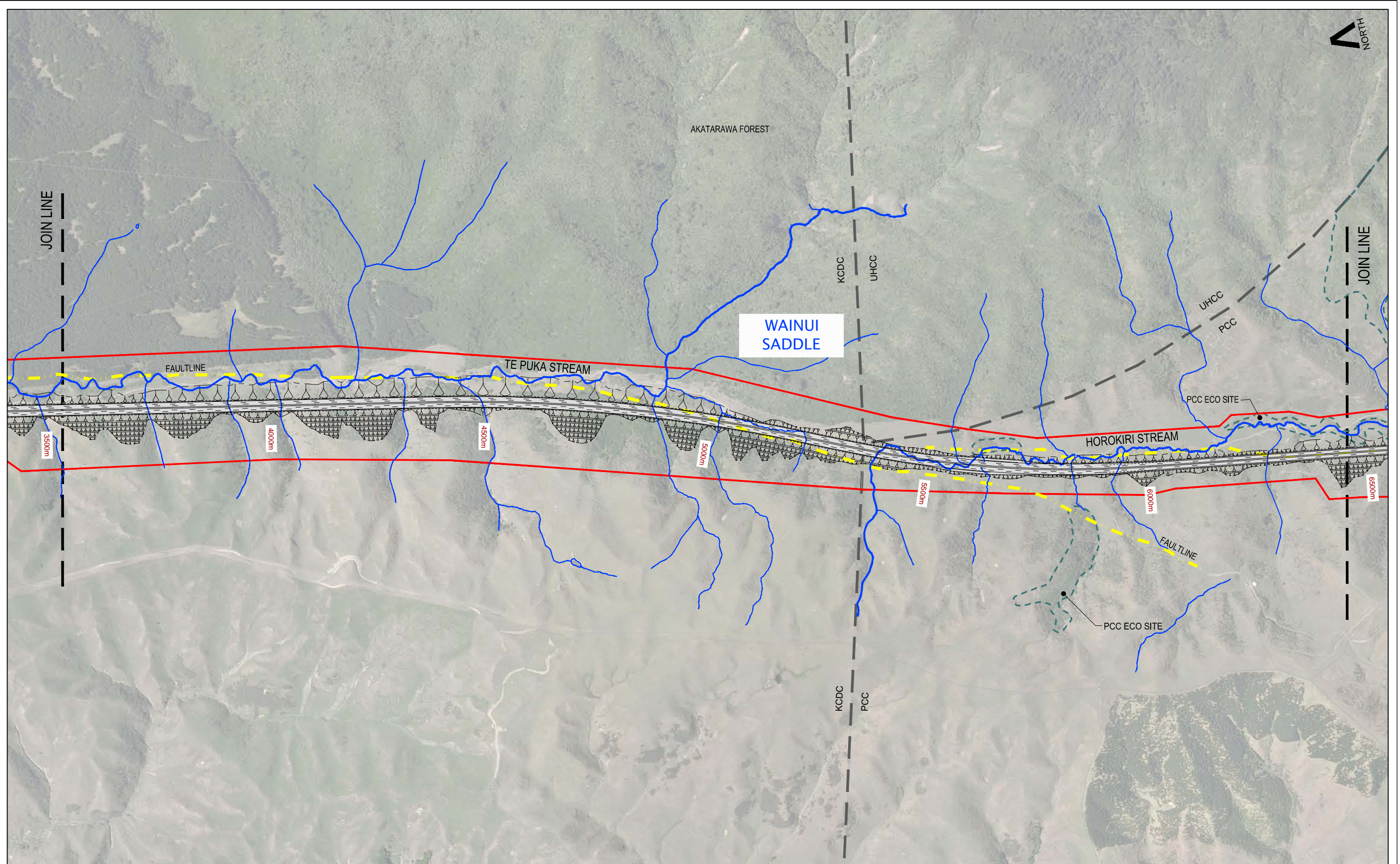
Project: TRANSMISSION GULLY PROJECT	
Title: Volume 4 - Plan Set Project Section Key	
Status: For Consenting	Version No. B
Sheet No. GA09	



Revision	Amendment	MAE	Date
B	MINOR AMENDMENTS	MAE	07/2011
A	ISSUED FOR EPA REVIEW	MAE	04/2011



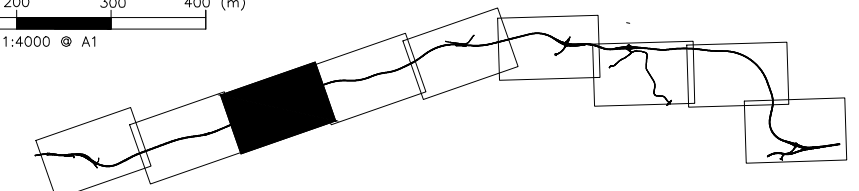
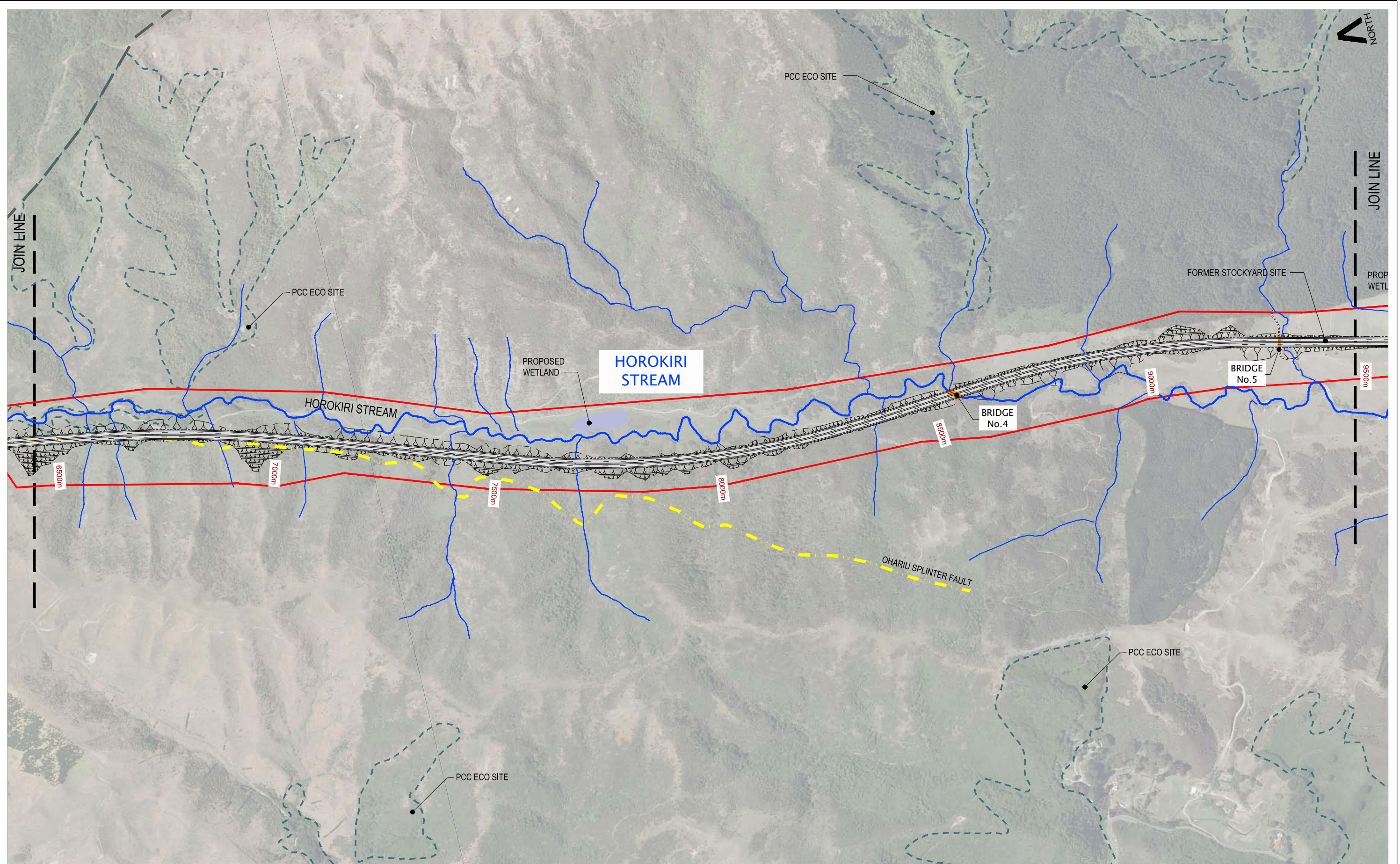
Project: TRANSMISSION GULLY PROJECT	
Title: Volume 4 - Plan Set Project Sections - 0m to 3500m Section 1 - MacKays Crossing	
Status: For Consenting	Version No. B
Sheet No. GA10	



Revision	Amendment	Approved	Date
B	MINOR AMENDMENTS	MAE	07/2011
A	ISSUED FOR EPA REVIEW	MAE	04/2011



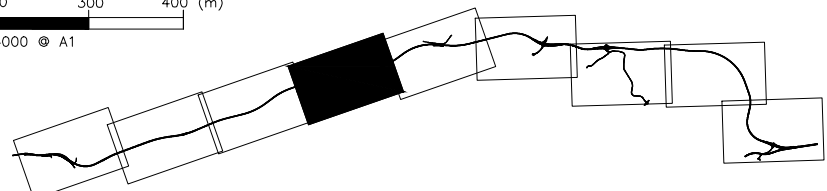
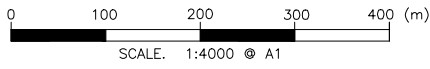
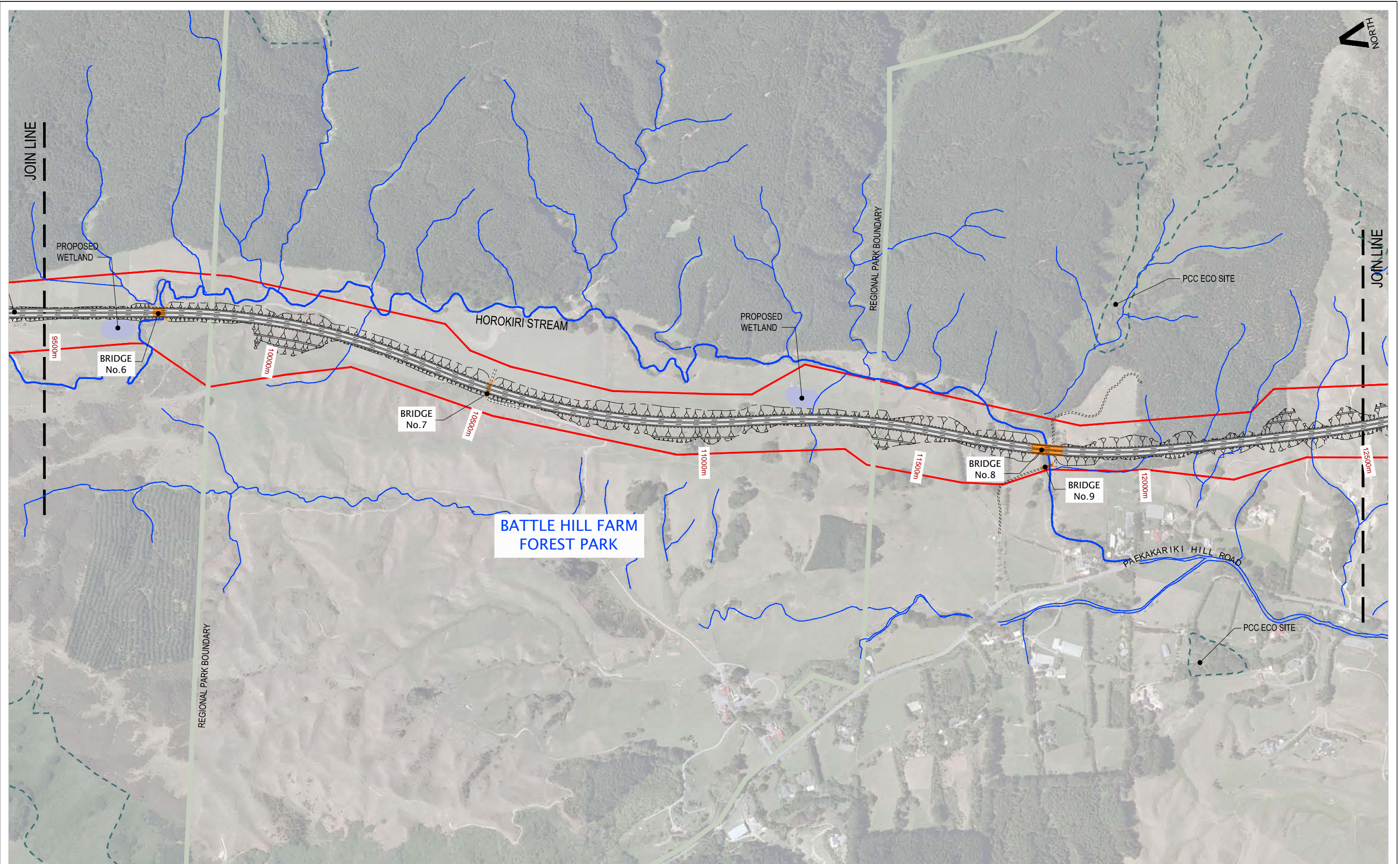
Project.		TRANSMISSION GULLY PROJECT	
Title.		Volume 4 - Plan Set Project Sections - 3500m to 6500m Section 2 - Wainui Saddle	
Status.	For Consenting		
Sheet. No.	GA11	Version No.	B



Revision	Amendment	Approved	Date
B	MINOR AMENDMENTS	MAE	07/2011
A	ISSUED FOR EPA REVIEW	MAE	04/2011



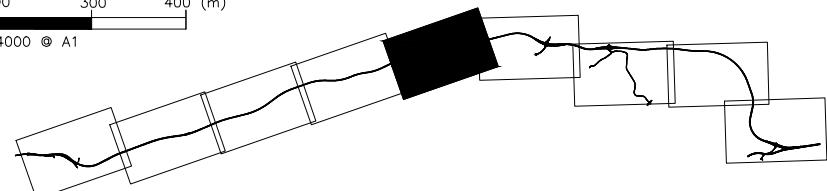
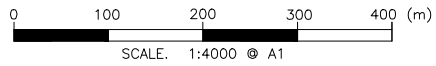
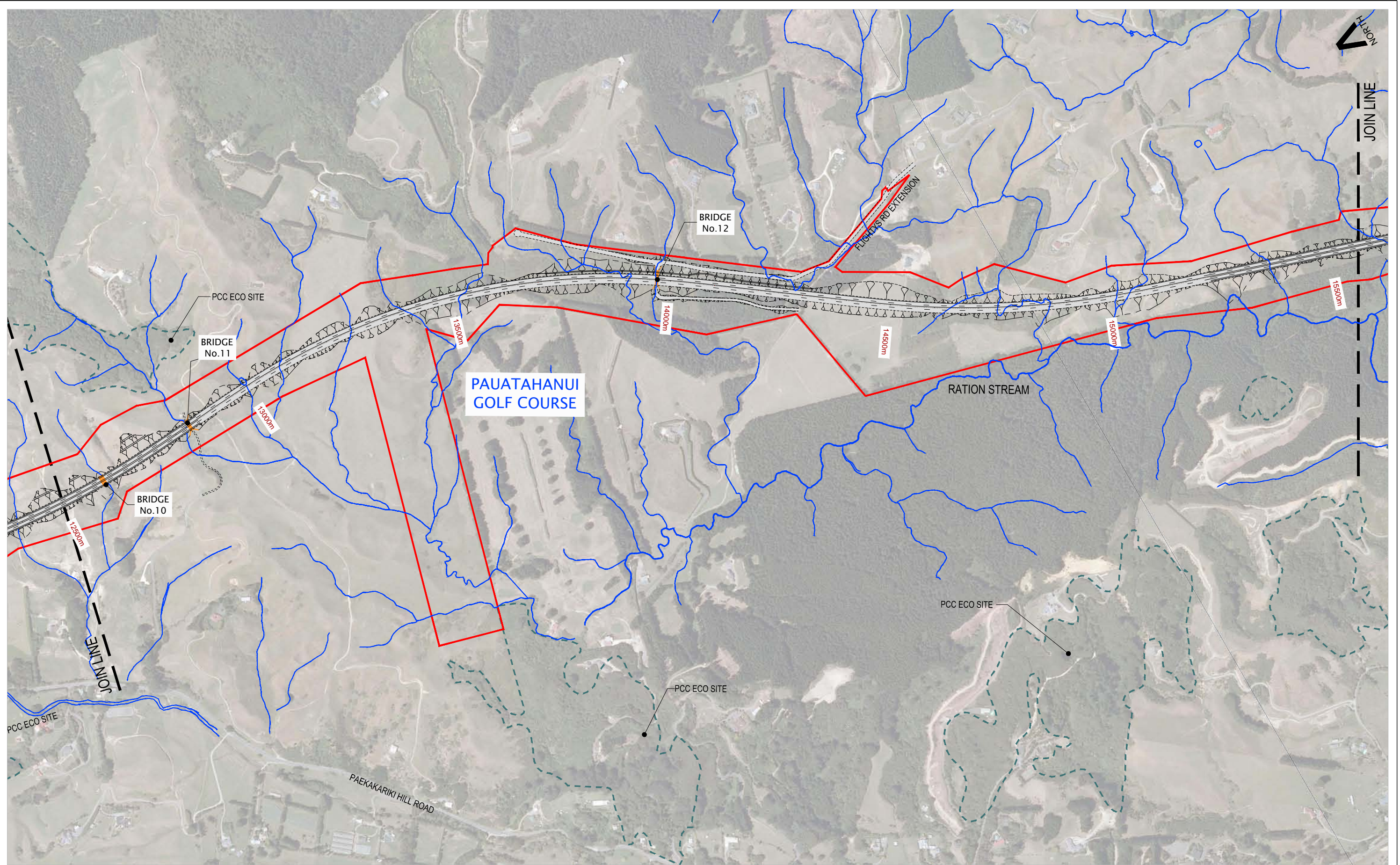
Project. TRANSMISSION GULLY PROJECT		Status.	For Consenting
Title. Volume 4 - Plan Set Project Sections - 6500m to 9500m Section 3 - Horokiri Stream		Sheet. No.	Version No.
		GA12	B



Revision	Amendment	MAE	Date
B	MINOR AMENDMENTS	MAE	07/2011
A	ISSUED FOR EPA REVIEW	MAE	04/2011



Project.		TRANSMISSION GULLY PROJECT	
Title.		Volume 4 - Plan Set Project Sections - 9500m to 12500m Section 4 - Battle Hill	
Status.	For Consenting		
Sheet. No.	GA13	Version No.	B



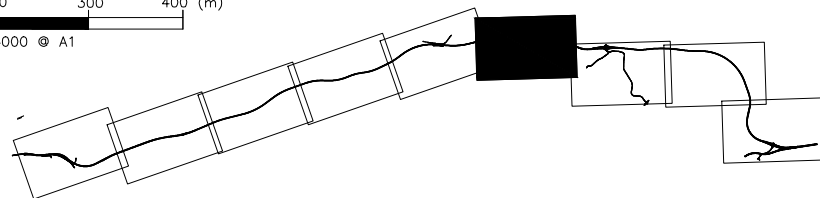
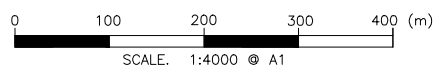
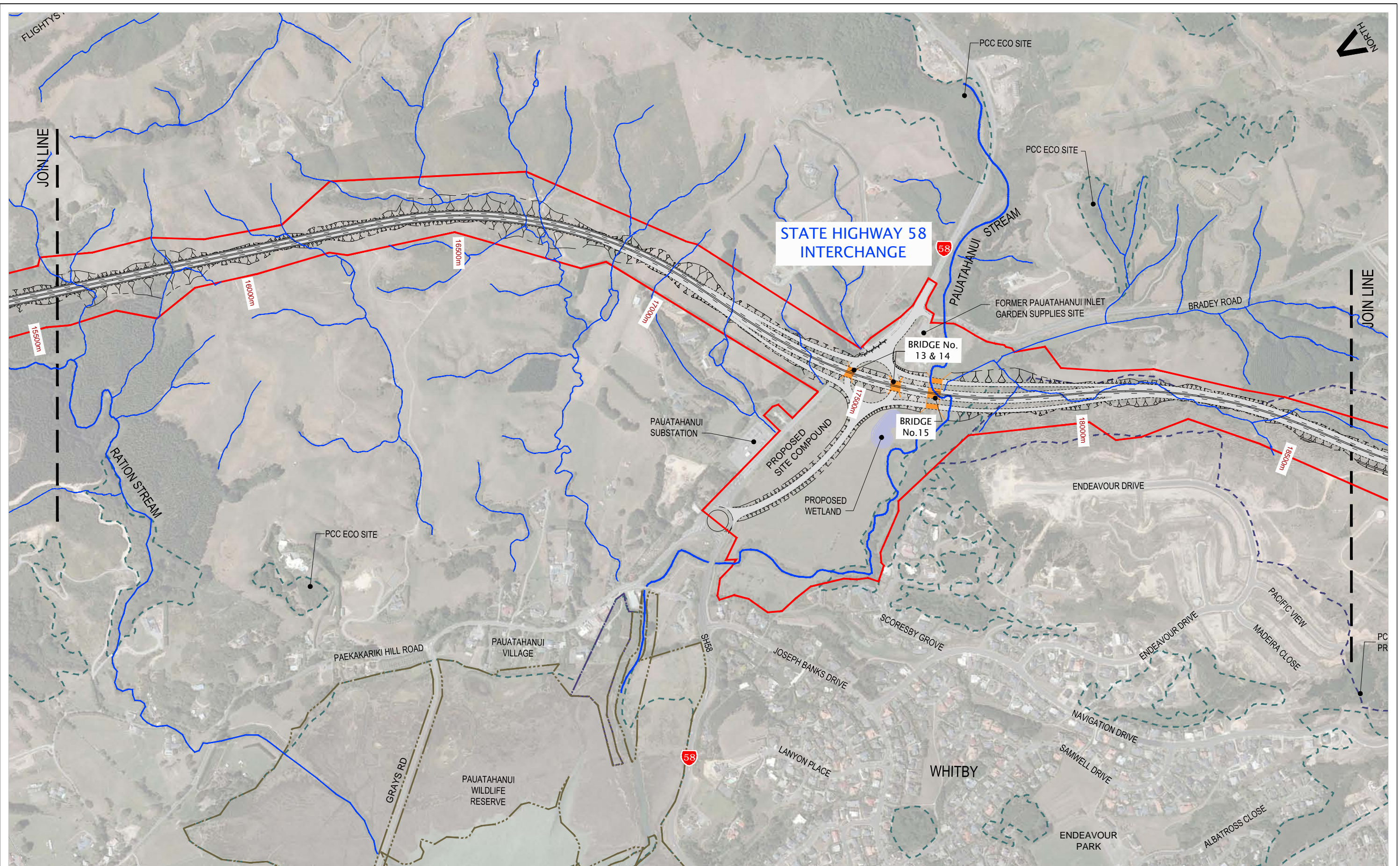
Revision	Amendment	MAE	Date
B	MINOR AMENDMENTS	MAE	07/2011
A	ISSUED FOR EPA REVIEW	MAE	04/2011



Project: **TRANSMISSION GULLY PROJECT**

Title: **Volume 4 - Plan Set
Project Sections - 12500m to 15500m
Section 5 - Golf Course**

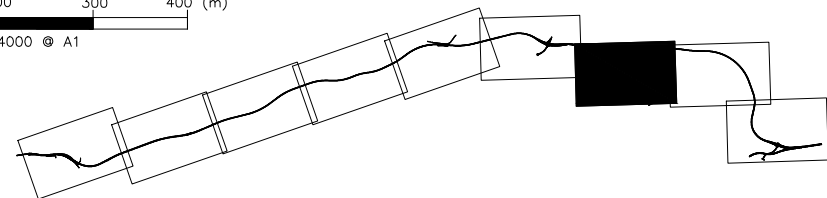
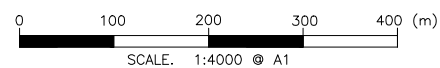
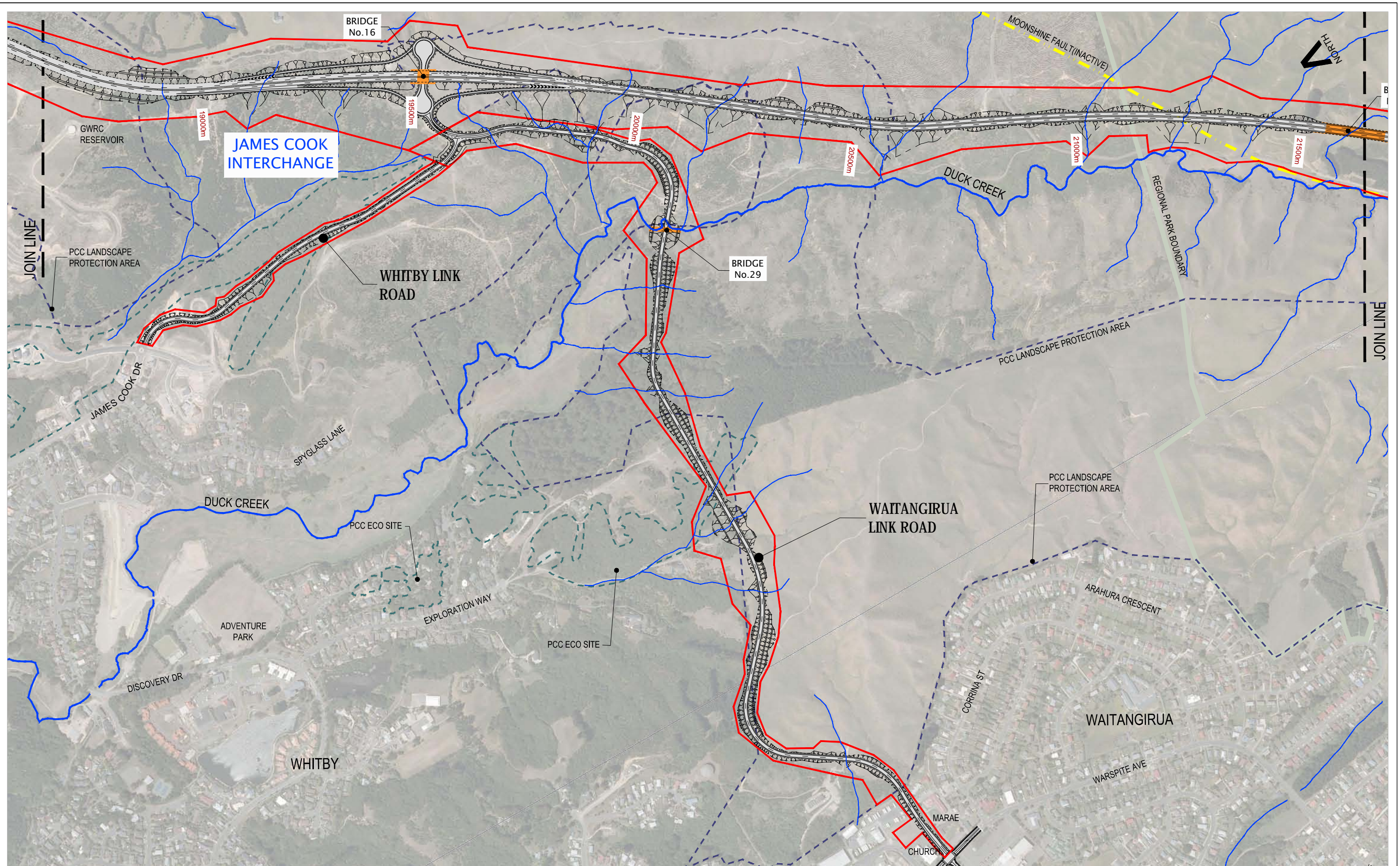
Status:	For Consenting
Sheet. No.	GA14
Version No.	B



Revision	Amendment	Approved	Date
B	MINOR AMENDMENTS	MAE	07/2011
A	ISSUED FOR EPA REVIEW	MAE	04/2011



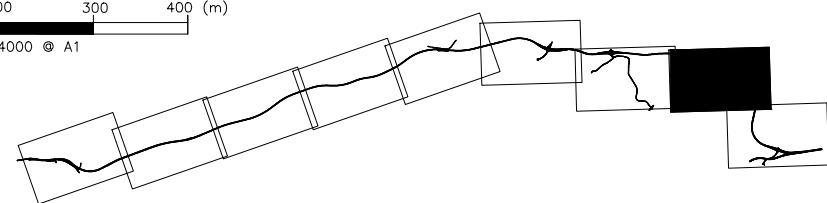
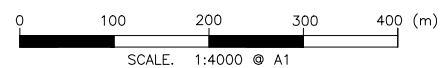
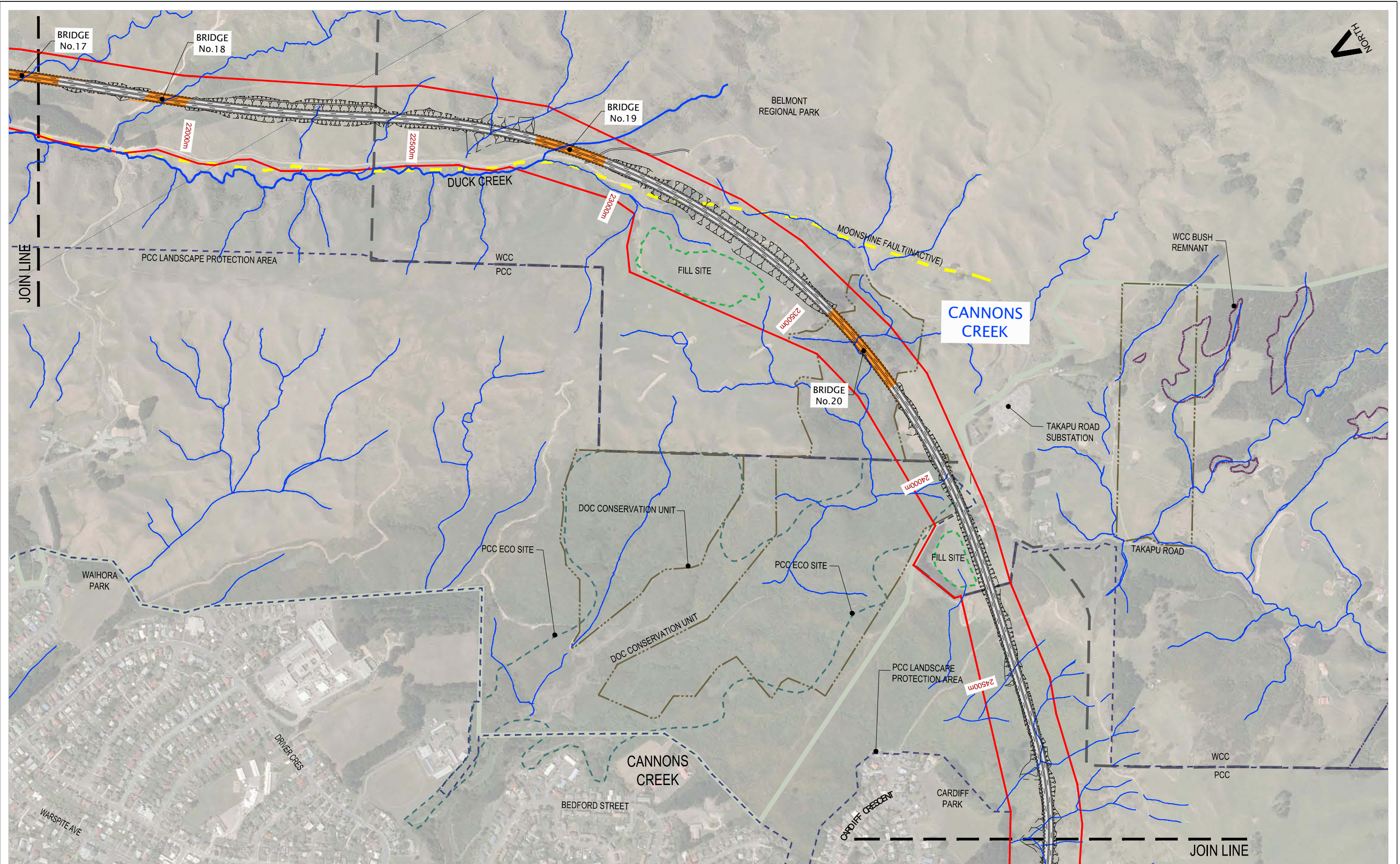
Project.		TRANSMISSION GULLY PROJECT	
Title.		Volume 4 - Plan Set	Status. For Consenting
		Project Sections - 15500m to 18500m	Sheet. No.
		Section 6 - State Highway 58	Version No. B
			GA15



Revision	Amendment	Approved	Date
B	MINOR AMENDMENTS	MAE	07/2011
A	ISSUED FOR EPA REVIEW	MAE	04/2011



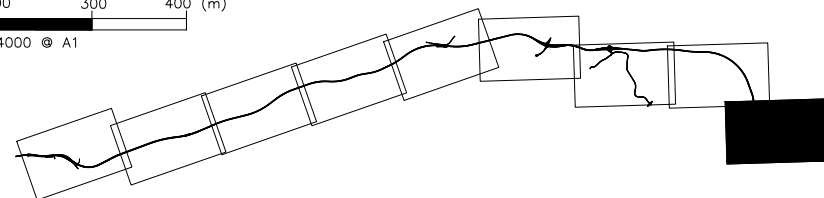
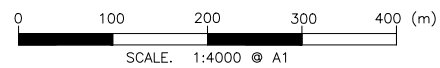
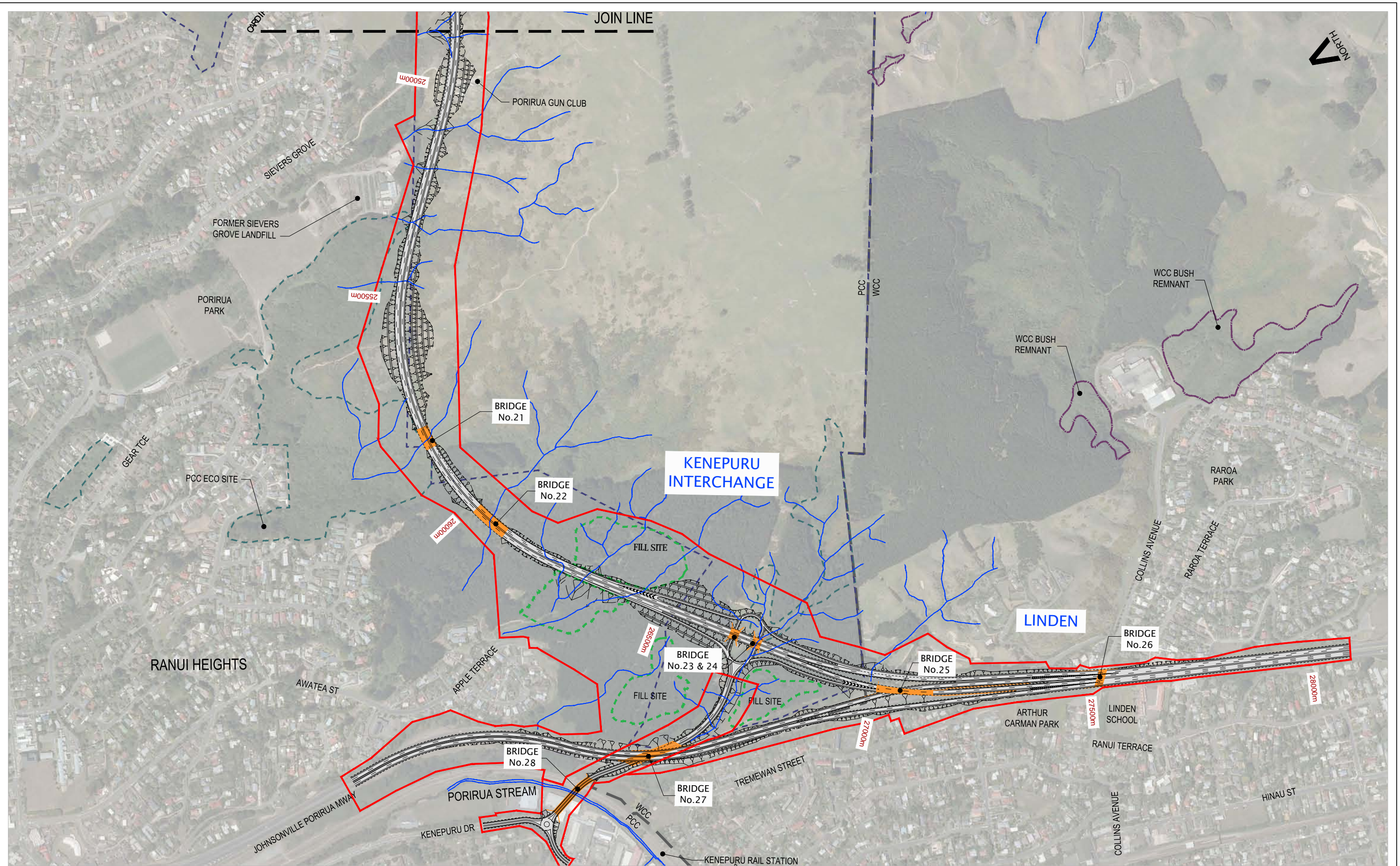
Project.		TRANSMISSION GULLY PROJECT	
Title.		Volume 4 - Plan Set Project Sections - 18500m to 21500m Section 7 - James Cook	
Status.	For Consenting		
Sheet. No.	GA16	Version No.	B



Revision	Amendment	MAE	Date
B	MINOR AMENDMENTS	MAE	07/2011
A	ISSUED FOR EPA REVIEW	MAE	04/2011



Project: TRANSMISSION GULLY PROJECT		Status: For Consenting
Title: Volume 4 - Plan Set Project Sections - 21500m to 24900m Section 8 - Cannons Creek		Version No. B
		Sheet No. GA17



Revision	Amendment	Approved	Date
C	DESIGNATION BOUNDARY UPDATED	MAE	10/2011
B	MINOR AMENDMENTS	MAE	07/2011
A	ISSUED FOR EPA REVIEW	MAE	04/2011



Project: **TRANSMISSION GULLY PROJECT**

Title: **Volume 4 - Plan Set**
Project sections - 24900m to 28050m
Section 9 - Linden

Status: **For Consenting**

Sheet No. **GA18** Version No. **C**