

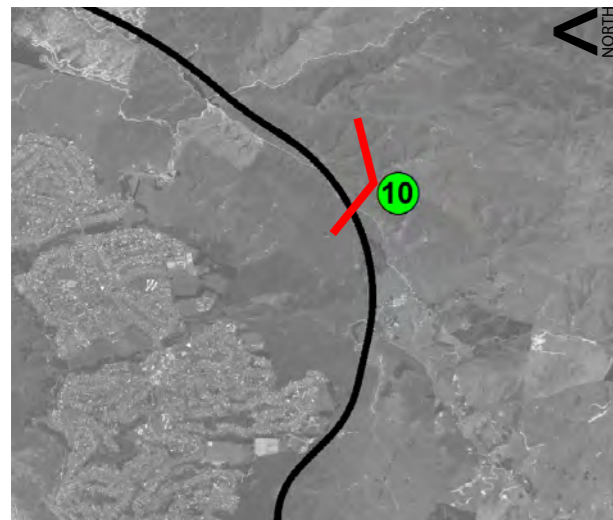


TRANSMISSION GULLY

TECHNICAL REPORT 5: LANDSCAPE AND VISUAL ASSESSMENT
PHOTOMONTAGES

JULY 2011

WAINUI SADDLE



Viewpoint 10

Looking North along Duck Creek
from mid Cannons Knob Track

Existing Landscape

Original Photo | Wade Robertson | 35mm DSLR Nikon D700 | 1033hrs 11th Mar 2011 | E 1757848 N 5442087 (NZTM)
Reading distance for correct scale: 400mm | Computer model elevation: 270m
Photomontages should be used as a guide to field observations.

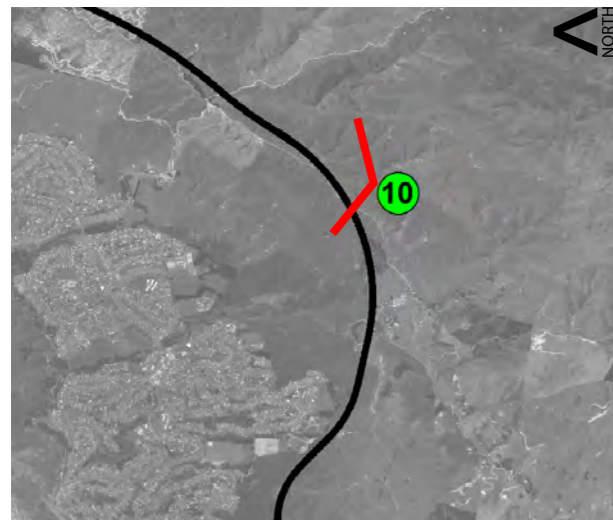


BRIDGE No. 19

WAINUI SADDLE

BRIDGE No. 18

JAMES COOK INTERCHANGE



Viewpoint 10

Looking North along Duck Creek from mid Cannons Knob Track

Proposed Road - without Mitigation

Original Photo | Wade Robertson | 50mm DSLR Nikon D700 | 1033hrs 11th Mar 2011 | E 1757848 N 5442087 (NZTM)

Photomontage | Grace He | Photoshop CS4 & 3ds Max Design | Reading distance for correct scale: 400mm | Computer model elevation: 270m

Distance | 500m from Proposed Road

Photomontages should be used as a guide to field observations.

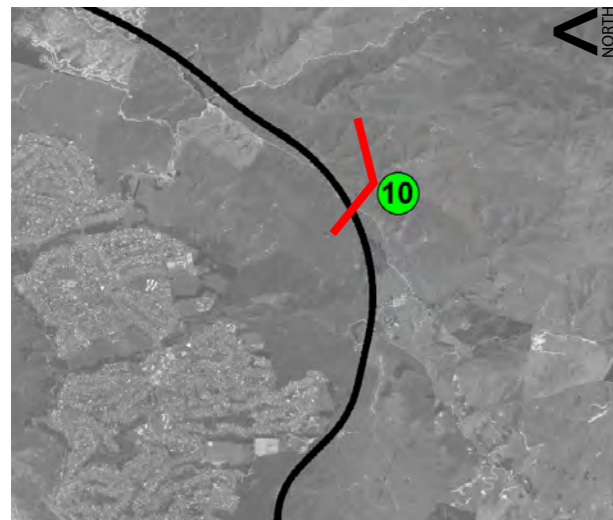


BRIDGE No. 19

WAINUI SADDLE

BRIDGE No. 18

JAMES COOK INTERCHANGE



Viewpoint 10

Looking North along Duck Creek from mid Cannons Knob Track

Proposed Road - with Mitigation

Original Photo | Wade Robertson | 50mm DSLR Nikon D700 | 1033hrs 11th Mar 2011 | E 1757848 N 5442087 (NZTM)

Photomontage | Grace He | Photoshop CS4 & 3ds Max Design | Reading distance for correct scale: 400mm | Computer model elevation: 270m

Distance | 500m from Proposed Road

Landscape mitigation planting shown at approximately 10 years growth.

Photomontages should be used as a guide to field observations.





Viewpoint 11

Looking South from Aotea Drive
(Play area), Aotea

Existing Landscape

Original Photo | Wade Robertson | 35mm DSLR Nikon D700 | 1202hrs 18th Nov 2010 | E 1756563 N 5445407 (NZTM)
Reading distance for correct scale: 400mm | Computer model elevation: 105m
Photomontages should be used as a guide to field observations.





Viewpoint 11

Looking South from Aotea Drive
(Play area), Aotea

Proposed Road - without Mitigation

Original Photo | Wade Robertson | 50mm DSLR Nikon D700 | 1202hrs 18th Nov 2010 | E 1756563 N 5445407 (NZTM)
Photomontage | Grace He | Photoshop CS4 & 3ds Max Design | Reading distance for correct scale: 400mm | Computer model elevation: 105m
Distance | 2850m from Proposed Road
Photomontages should be used as a guide to field observations.





Viewpoint 11

Looking South from Aotea Drive (Play area), Aotea

Proposed Road - with Mitigation

Original Photo | Wade Robertson | 50mm DSLR Nikon D700 | 1202hrs 18th Nov 2010 | E 1756563 N 5445407 (NZTM)
Photomontage | Grace He | Photoshop CS4 & 3ds Max Design | Reading distance for correct scale: 400mm | Computer model elevation: 105m
Distance | 2850m from Proposed Road
 Landscape mitigation planting shown at approximately 10 years growth.
 Photomontages should be used as a guide to field observations.





Viewpoint 12

Looking south from the vicinity of Porirua Train Station

Existing Landscape

Original Photo | Wade Robertson | 35mm DSLR Nikon D700 | 1258hrs 18th Nov 2010 | E 1754697 N 5444129 (NZTM)
 Reading distance for correct scale: 400mm | Computer model elevation: 83m
 Photomontages should be used as a guide to field observations.





Viewpoint 12

Looking south from the vicinity of Porirua Train Station

Proposed Road - without Mitigation

Original Photo | Wade Robertson | 50mm DSLR Nikon D700 | 1258hrs 18th Nov 2010 | E 1754697 N 5444129 (NZTM)
 Photomontage | Grace He | Photoshop CS4 & 3ds Max Design | Reading distance for correct scale: 400mm | Computer model elevation: 83m
 Distance | 2850m from Proposed Road
 Photomontages should be used as a guide to field observations.





Viewpoint 12

Looking south from the vicinity of Porirua Train Station

Proposed Road - with Mitigation

Original Photo | Wade Robertson | 50mm DSLR Nikon D700 | 1258hrs 18th Nov 2010 | E 1754697 N 5444129 (NZTM)
Photomontage | Grace He | Photoshop CS4 & 3ds Max Design | Reading distance for correct scale: 400mm | Computer model elevation: 83m
Distance | 2850m from Proposed Road
 Landscape mitigation planting shown at approximately 10 years growth.
 Photomontages should be used as a guide to field observations.





Viewpoint 13

Looking East from vacant section on Victory Crescent, Tawa

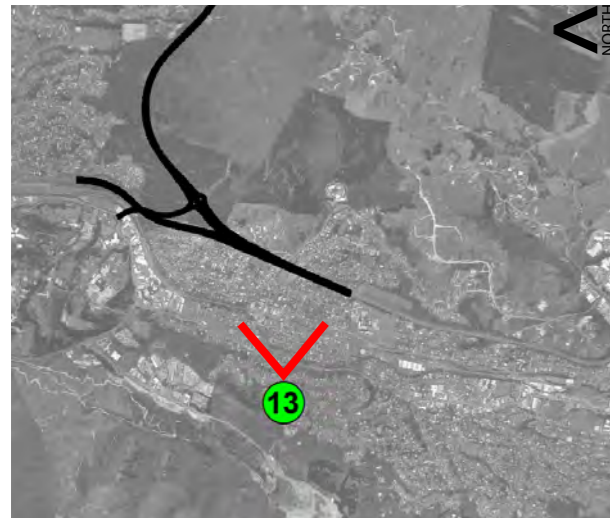
Existing Landscape

Original Photo | Wade Robertson | 50mm DSLR Nikon D700 | 1335hrs 18th Nov 2010 | E 1753071 N 5441952 (NZTM)
Reading distance for correct scale: 400mm | Computer model elevation: 109m
Photomontages should be used as a guide to field observations.





BRIDGE No. 23-24 BRIDGE No. 25



Viewpoint 13

Looking East from vacant section on Victory Crescent, Tawa

Proposed Road - without Mitigation

Original Photo | Wade Robertson | 50mm DSLR Nikon D700 | 1335hrs 18th Nov 2010 | E 1753071 N 5441952 (NZTM)
Photomontage | Alan England | Photoshop CS4 & 3ds Max Design | Reading distance for correct scale: 400mm | Computer model elevation: 109m
Distance | 980m from Proposed Linden Interchange
Photomontages should be used as a guide to field observations.

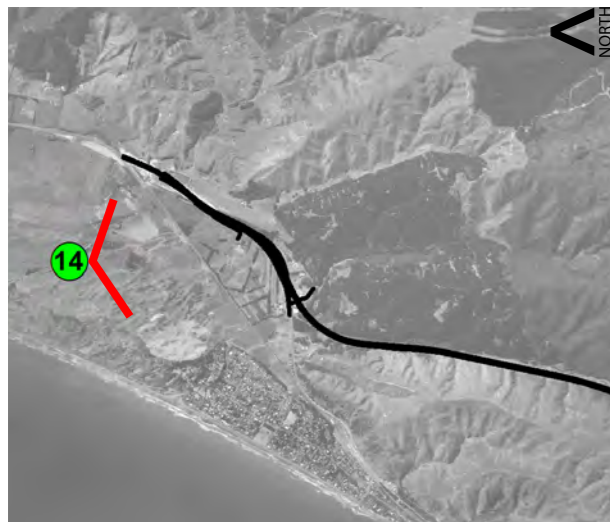


BRIDGE No. 23-24 BRIDGE No. 25



Proposed Road - with Mitigation

Original Photo | Wade Robertson | 50mm DSLR Nikon D700 | 1335hrs 18th Nov 2010 | E 1753071 N 5441952 (NZTM)
Photomontage | Alan England | Photoshop CS4 & 3ds Max Design | Reading distance for correct scale: 400mm | Computer model elevation: 109m
Distance | 980m from Proposed Linden Interchange
Landscape mitigation planting shown at approximately 10 years growth.
Photomontages should be used as a guide to field observations.



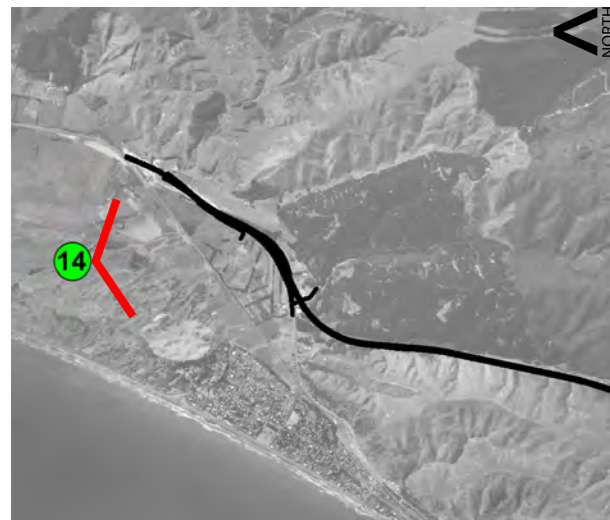
Viewpoint 14

Looking south from QE Park (Whararoa Road).

Existing Landscape

Original Photo | Wade Robertson | 35mm DSLR Nikon D700 | 1330 hrs 27th JUN 2010 | E 1766064 N 5463284 (NZTM)
Reading distance for correct scale: 400mm | Computer model elevation: 13m
Photomontages should be used as a guide to field observations.





Viewpoint 14

Looking south from QE Park (Whararoa Road).

Proposed Tower

Original Photo | Wade Robertson | 50mm DSLR Nikon D700 | 1330 hrs 27th JUN 2010 | E 1766064 N 5463284 (NZTM)
 Photomontage | Grace He | Photoshop CS4 & 3ds Max Design | Reading distance for correct scale: 400mm | Computer model elevation: 13m
 Distance | 1750m from proposed Tower
 Photomontages should be used as a guide to field observations.

