



# TRANSMISSION GULLY

TECHNICAL REPORT 5: LANDSCAPE AND VISUAL ASSESSMENT  
PHOTOMONTAGES

JULY 2011





MacKays Crossing

14

1

Paekakariki

2

3

Battle Hill Farm Forest Park

4

5

6

Lanes Flat

7

8

Waitangirua

11

9

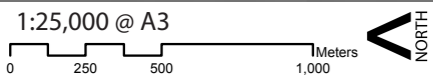
10

Porirua

12

Linden

13



Viewpoint Location Map

Tower 2



**Viewpoint 1**

Looking south from south bound on ramp at MacKays Crossing

**Existing Landscape**

Original Photo | Lisa Rimmer | 50mm DSLR Nikon D700 | 1218hrs 17th JAN 2012 | E 1766790 N 5462420 (NZTM)  
Reading distance for correct scale: 400mm | Computer model elevation: 22m  
Photomontages should be used as a guide to field observations.



Tower 2A



### Viewpoint 1

Looking south from south bound on ramp at MacKays Crossing

### Proposed Road - without Mitigation

**Original Photo** | Lisa Rimmer | 50mm DSLR Nikon D700 | 1218hrs 17th JAN 2012 | E 1766790 N 5462420 (NZTM)

**Photomontage** | Grace He | Photoshop CS4 & 3ds Max Design | Reading distance for correct scale: 400mm | Computer model elevation: 22m

**Distance** | 10m from Proposed Road

Photomontages should be used as a guide to field observations.



Tower 2A



### Viewpoint 1

Looking south from south bound on ramp at MacKays Crossing

### Proposed Road - with Mitigation

**Original Photo** | Lisa Rimmer | 50mm DSLR Nikon D700 | 1218hrs 17th JAN 2012 | E 1766790 N 5462420 (NZTM)

**Photomontage** | Grace He | Photoshop CS4 & 3ds Max Design | Reading distance for correct scale: 400mm | Computer model elevation: 22m

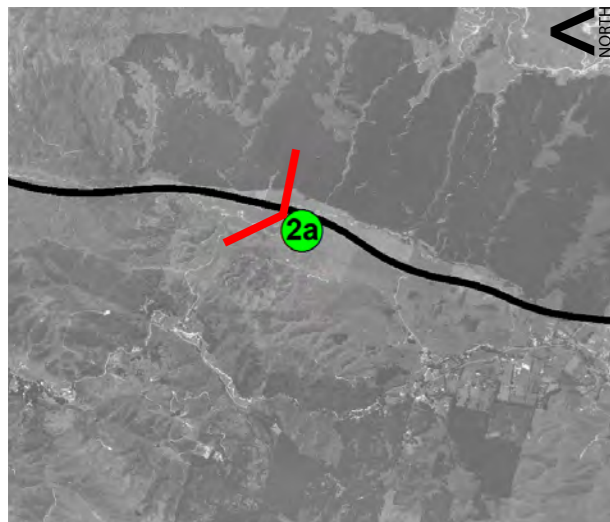
**Distance** | 10m from Proposed Road

Landscape mitigation planting shown at approximately 10 years growth. Note: Photomontage illustrates revegetation of cut and fill batters. It does not illustrate the retirement and enrichment planting of the hillsides within Te Puka valley.

Photomontages should be used as a guide to field observations.







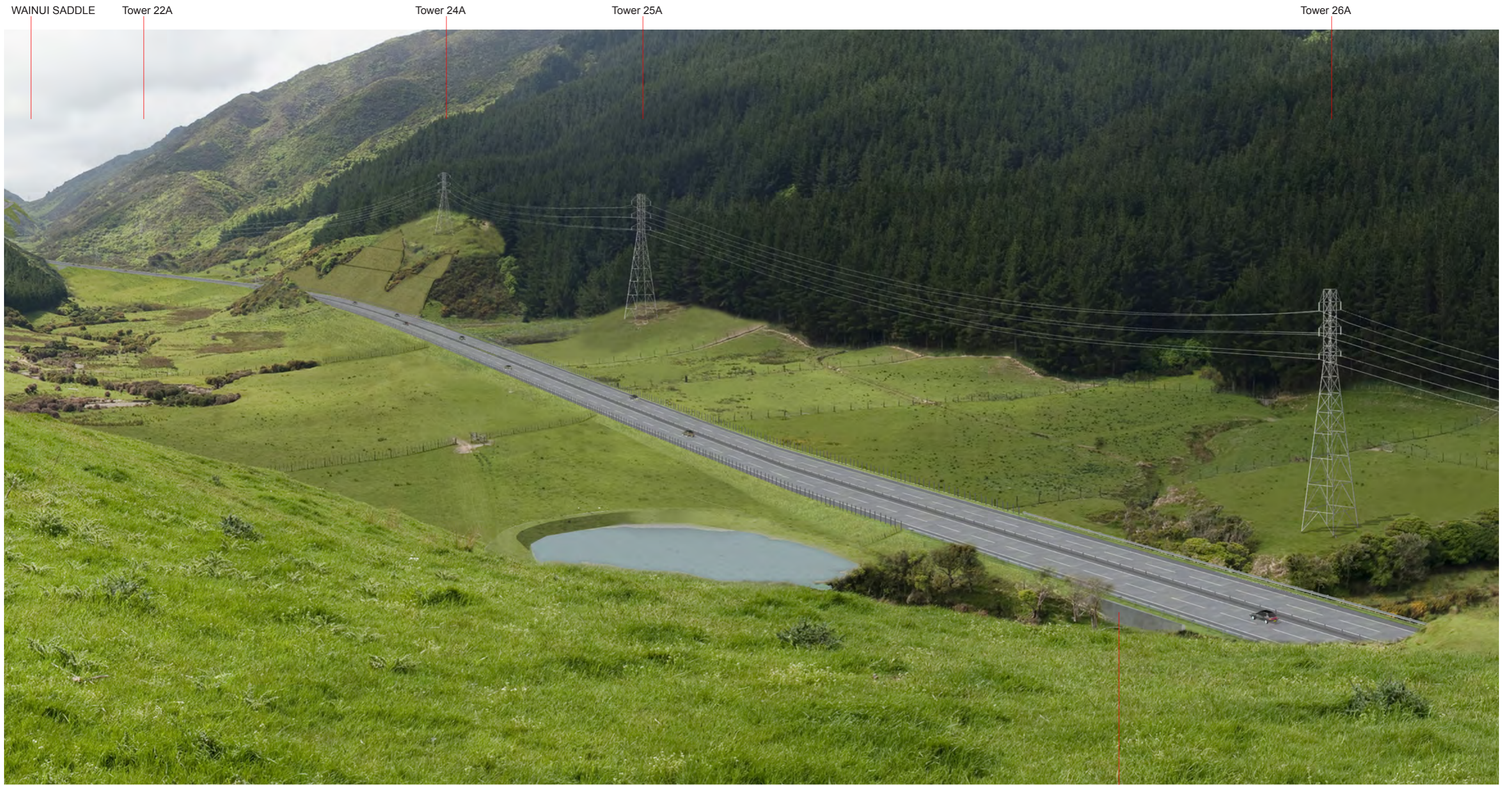
### Viewpoint 2A

Looking North from Battle Hill Farm Forest Park (Gas Line Ridge) towards Wainui Saddle

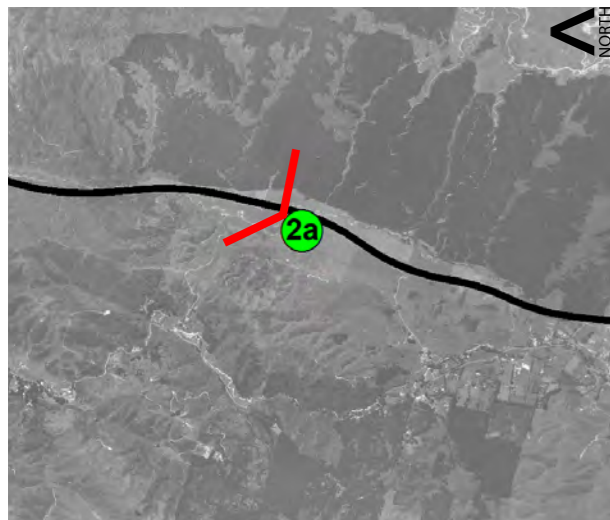
### Existing Landscape

Original Photo | Wade Robertson | 35mm DSLR Nikon D700 | 1429 hrs 18th Nov 2010 | E 1763832 N 5453791 (NZTM)  
Reading distance for correct scale: 400mm | Computer model elevation: 136m  
Photomontages should be used as a guide to field observations.





BRIDGE No. 6



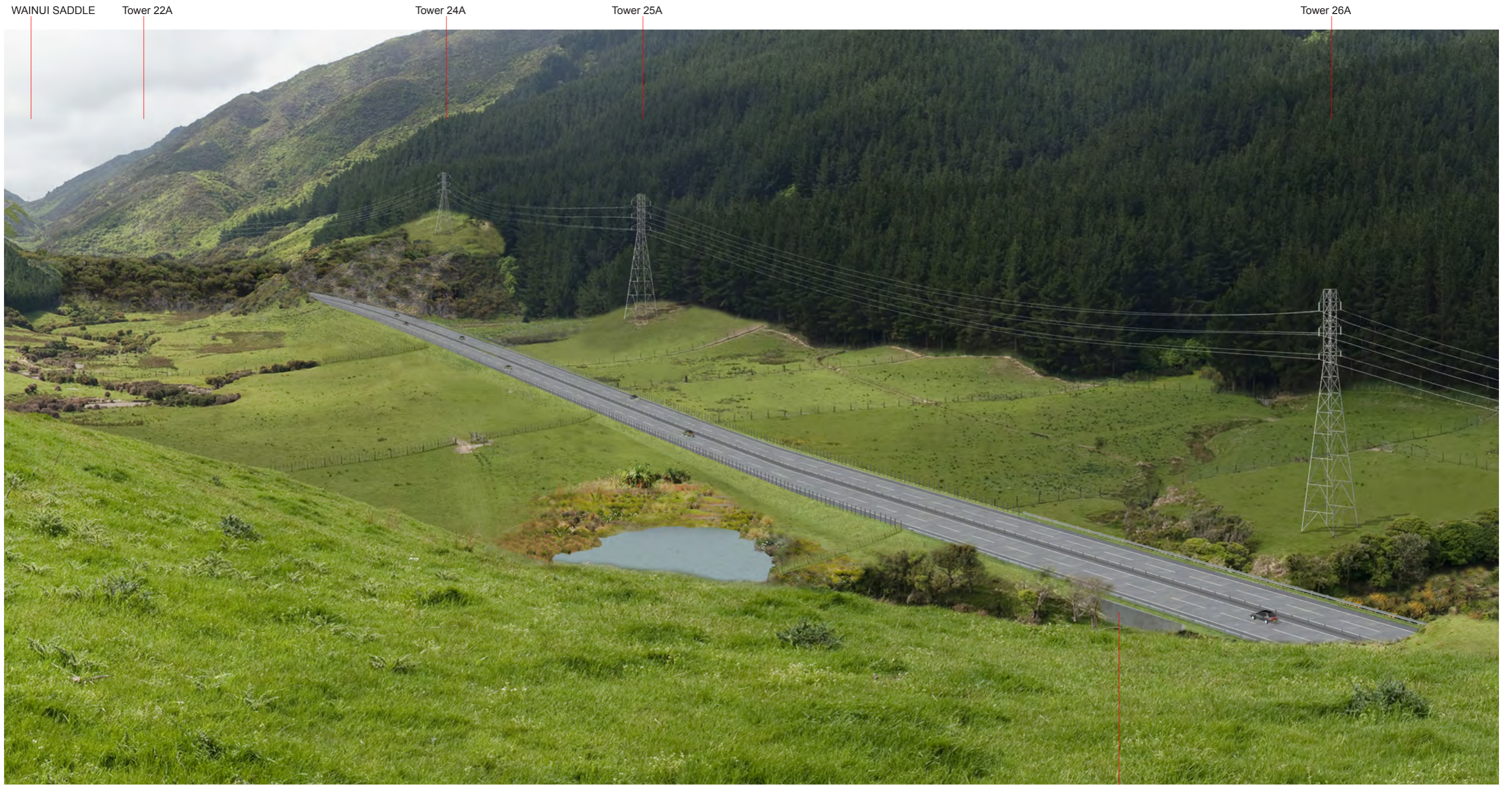
**Viewpoint 2A**

Looking North from Battle Hill Farm Forest Park (Gas Line Ridge) towards Wainui Saddle

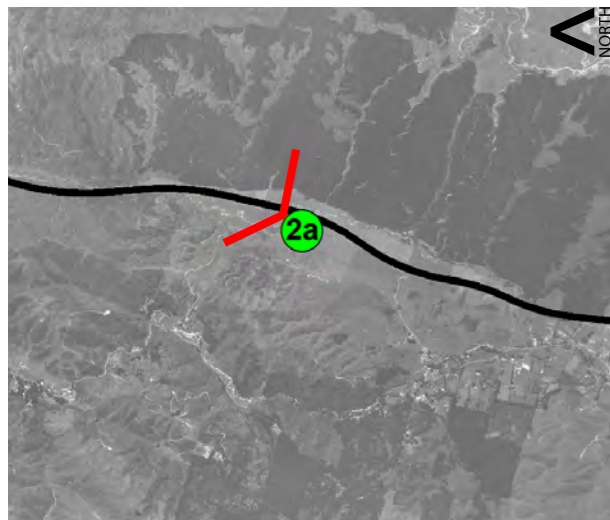
**Proposed Road - without Mitigation**

**Original Photo** | Wade Robertson | 50mm DSLR Nikon D700 | 1429 hrs 18th Nov 2010 | E 1763832 N 5453791 (NZTM)  
**Photomontage** | Grace He | Photoshop CS4 & 3ds Max Design | Reading distance for correct scale: 400mm | Computer model elevation: 136m  
**Distance** | 150m from proposed Road  
 Photomontages should be used as a guide to field observations.





BRIDGE No. 6



**Viewpoint 2A**

Looking North from Battle Hill Farm Forest Park (Gas Line Ridge) towards Wainui Saddle

**Proposed Road - with Mitigation**

**Original Photo** | Wade Robertson | 50mm DSLR Nikon D700 | 1429 hrs 18th Nov 2010 | E 1763832 N 5453791 (NZTM)  
**Photomontage** | Grace He | Photoshop CS4 & 3ds Max Design | Reading distance for correct scale: 400mm | Computer model elevation: 136m  
**Distance** | 150m from proposed Road  
 Landscape mitigation planting shown at approximately 10 years growth.  
 Photomontages should be used as a guide to field observations.

