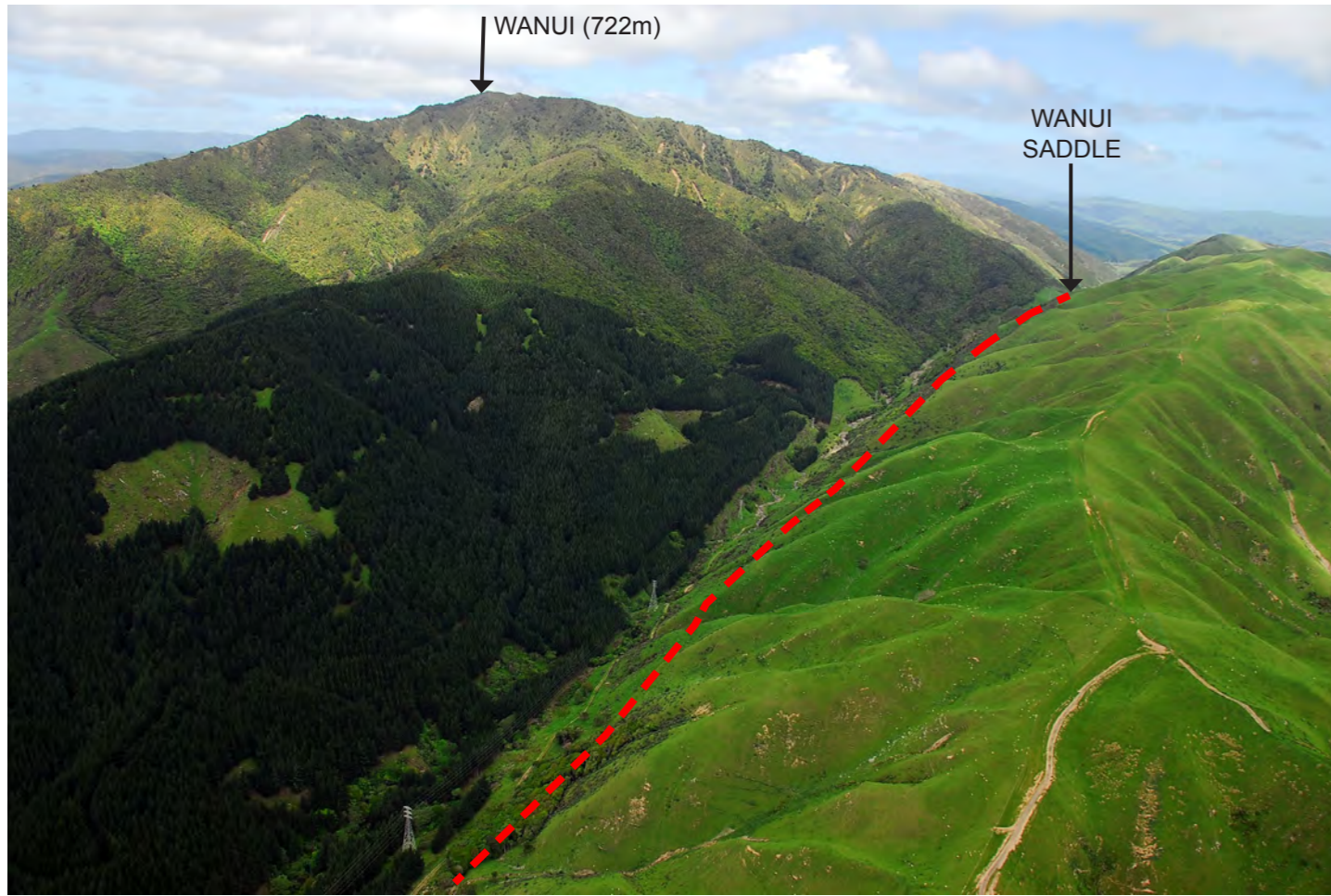




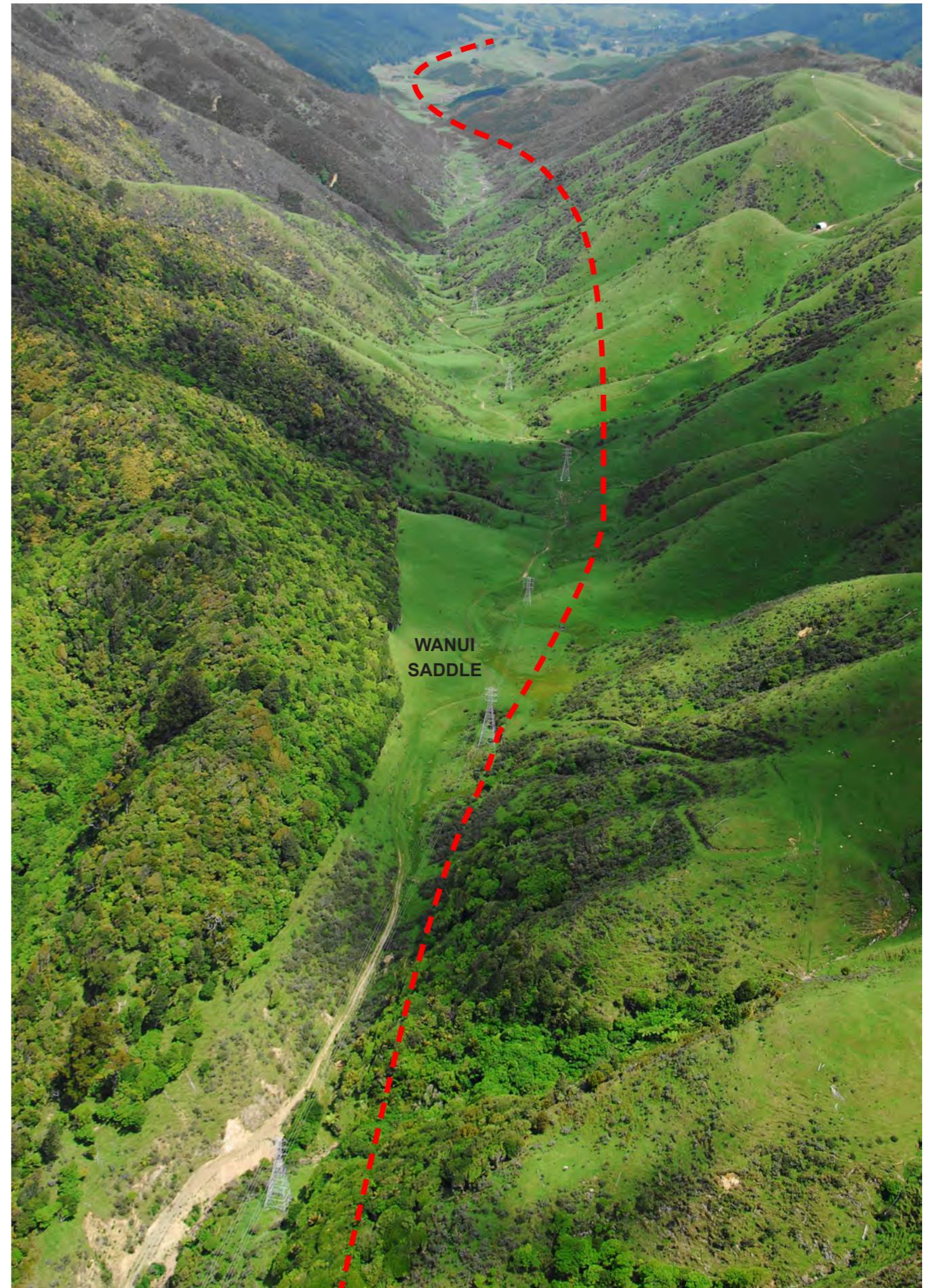
1) View south to the bottom of Te Puka Stream valley and coastal foothills from MacKays Crossing (Route Section 1)



2) View to the south up Te Puka Stream showing steep sided valley and vegetation cover (Route Section 2)



3) Aerial view of Te Puka Stream towards Wainui Saddle in the south (Route Section 2)



4) Aerial view of Wainui Saddle with Te Puka and Horokiri Stream Valleys to the north and south respectively (Route Sections 2 and 3)



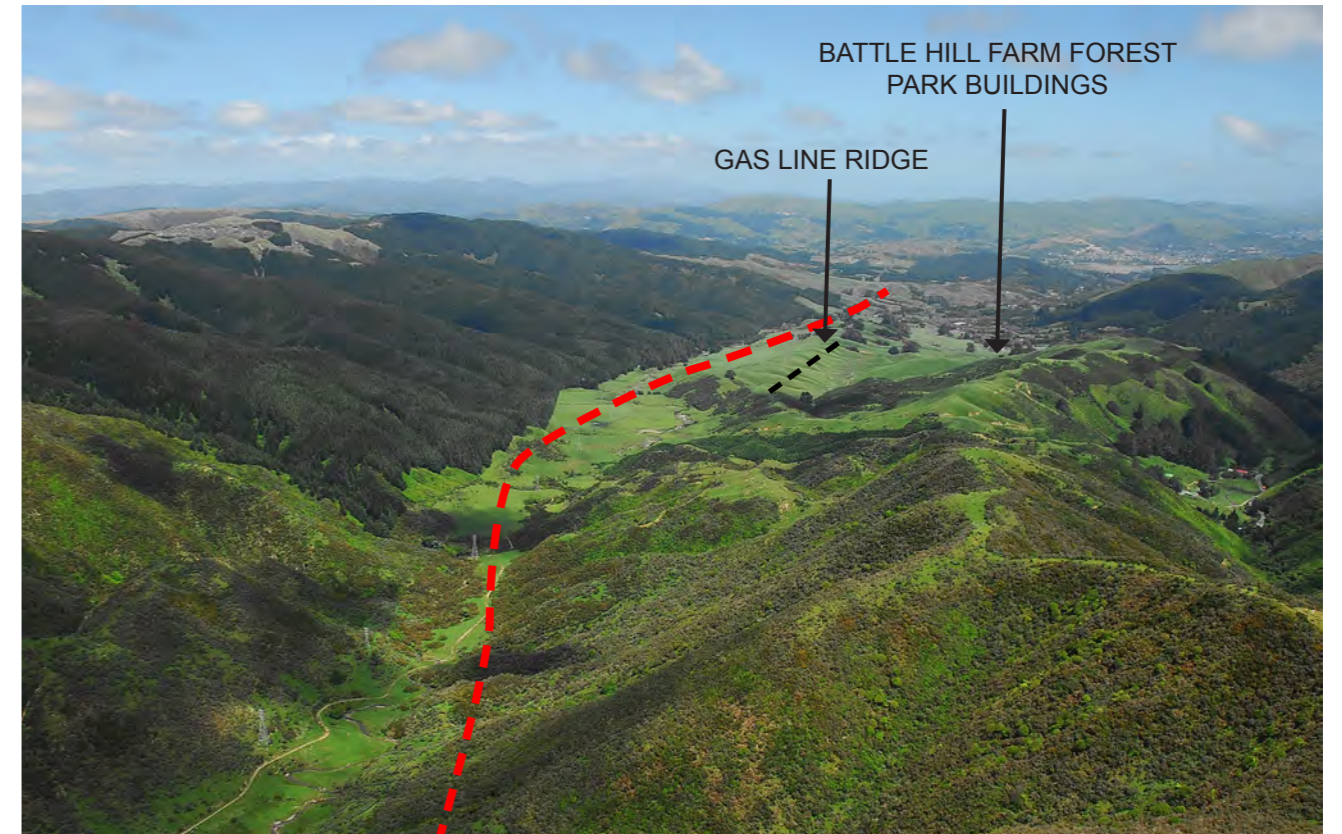
5) View to the north down Te Puka Stream from below Wainui Saddle with distant views to Kapiti Coastal Plain; steep sided valley; and vegetation cover (Route Section 2)



6) View to the south down Horokiri Stream Valley from below Wainui Saddle (Route Section 3)



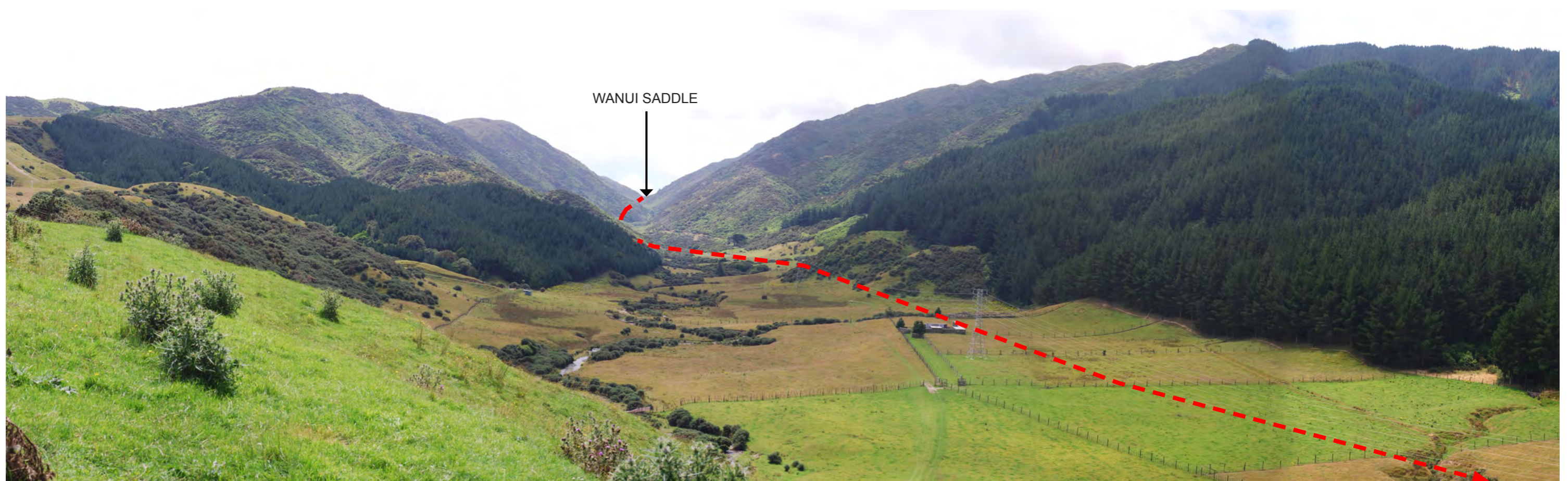
7) Aerial view of Horokiri Stream Valley showing distant view to Battle Hill in the south and pastoral/ native vegetation cover (Route Section 3 and 4)



8) Aerial view of lower Horokiri Stream Valley and Battle Hill (Route Section 3 and 4)



9) Aerial view of Battle Hill with Golf Course and Flightys Road in the distance to the south (Route Section 4 and 5)

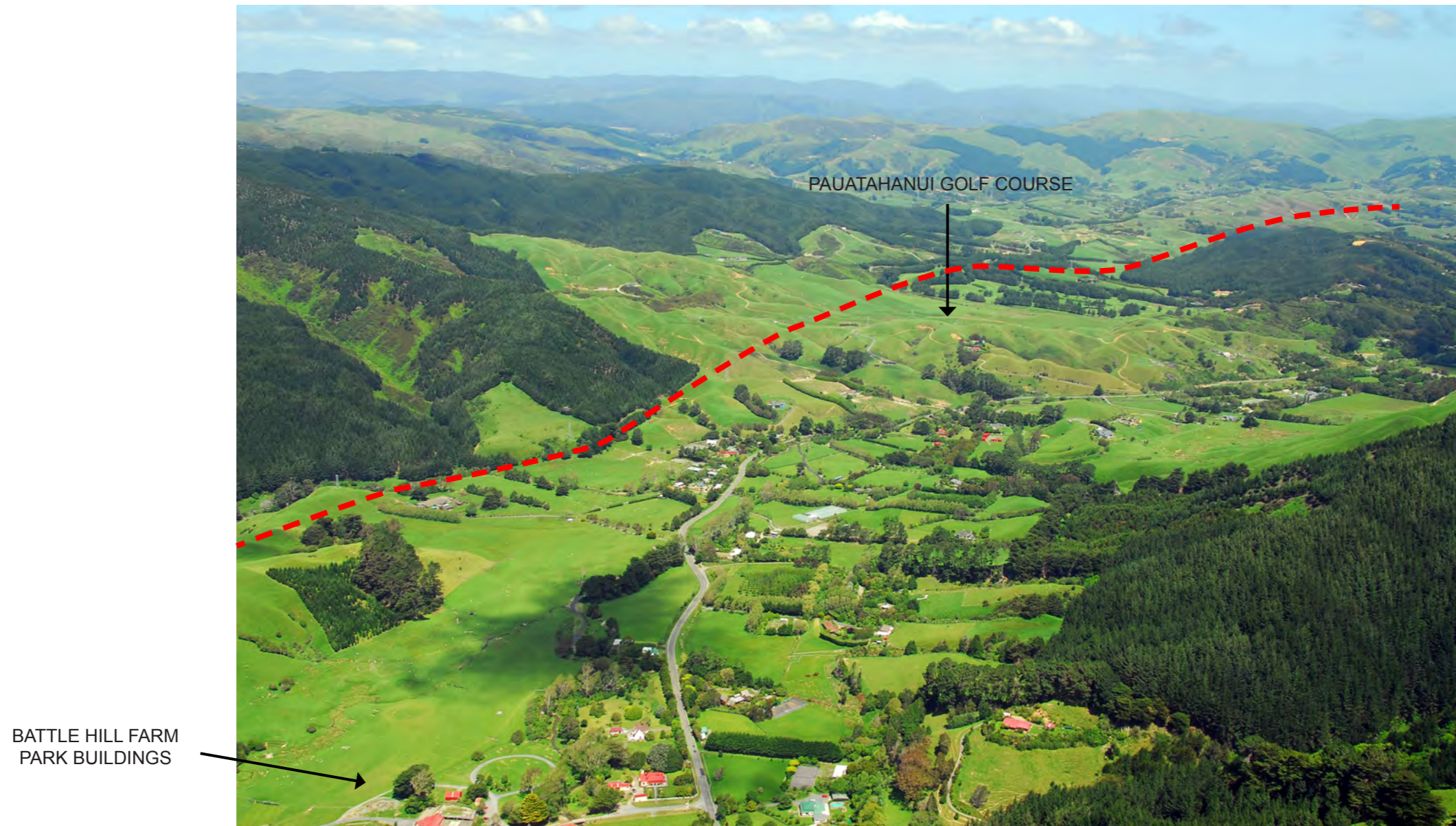


10) View to the north up Horokiri Stream Valley (aka Transmission Gully) from Gas Line Ridge/ Battle Hill (Route Section 3 and 4)

Landscape Context Photos



11) View to the south down Horokiri Stream Valley along Gas Line Ridge and across Battle Hill pastoral flat (Route Section 4)



BATTLE HILL FARM
PARK BUILDINGS

PAUATAHANUI GOLF COURSE

12) Aerial view of the southern end of Battle Hill with Paekakariki Hill Road in foreground and Golf Course in the distance (Route Section 5)



13) View to the east across Pauatahanui Golf Course from carpark (Route Section 5)

Landscape Context Photos



14) Aerial view to the east showing SH58/ Lanes Flat; northern Whitby; Silverwood Subdivision and Bradey Road lifestyle properties (Route Section 6)



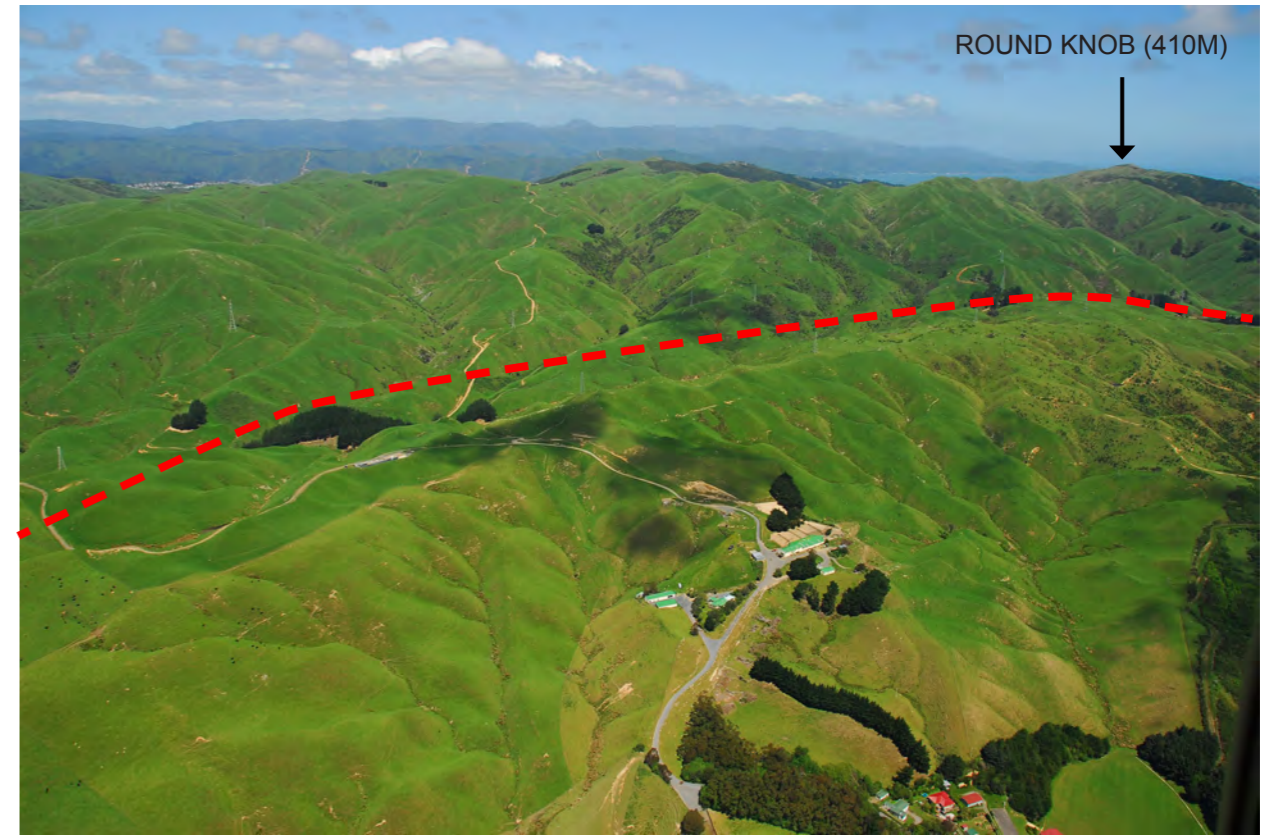
15) Aerial view to the west showing; Pauatahanui Inlet and backdrop hills; northern Whitby; Silverwood Subdivision and Bradey Road lifestyle properties (Route Section 6)



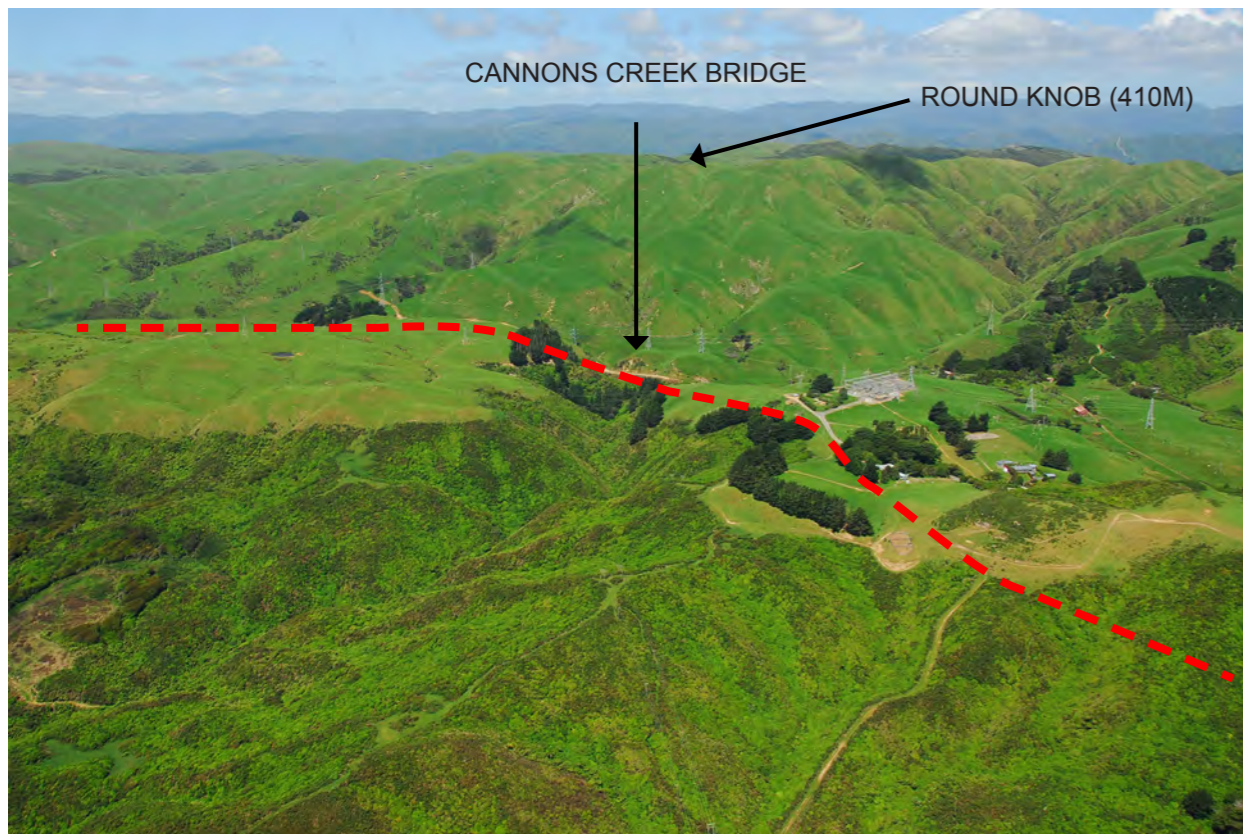
16) View to the north from Endeavour Drive (Silverwood Subdivision) showing SH58/ Lanes Flat (Route Section 6)



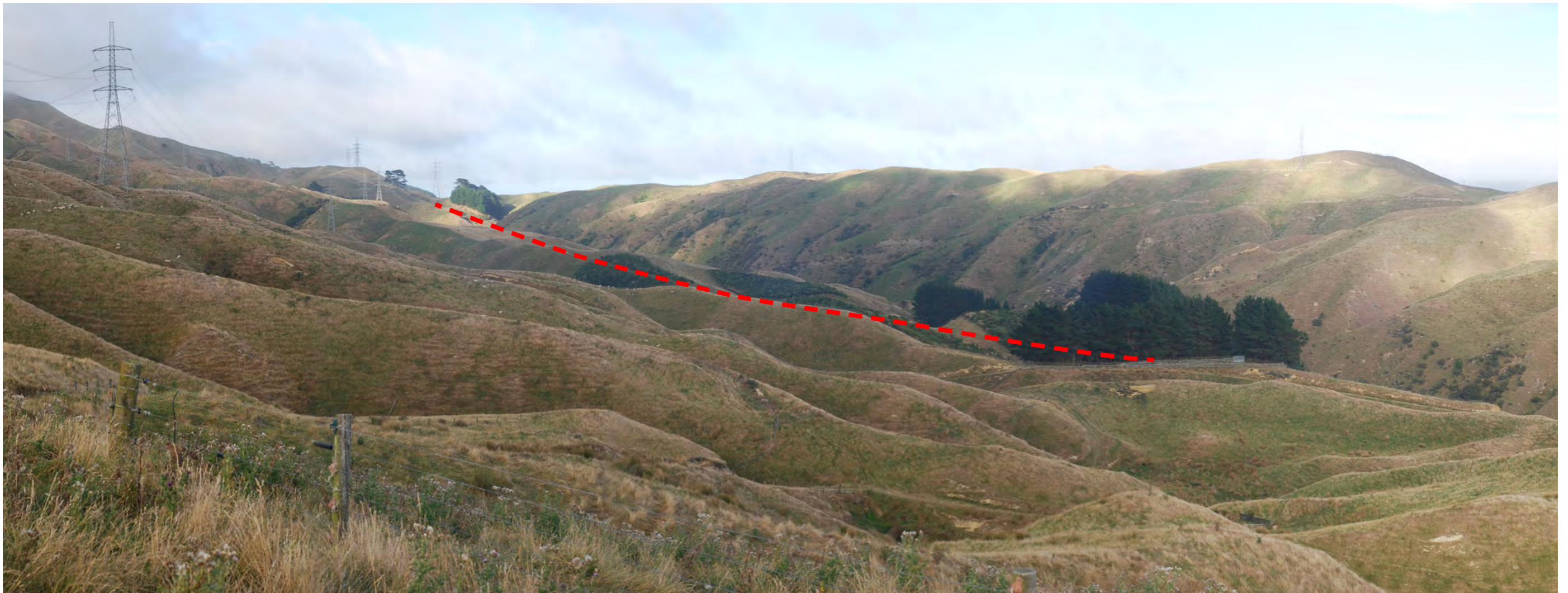
17) Aerial view to the south showing the location of Waitangirua Link Road (Route Section 7)



18) Aerial view to the south mid way up Duck Creek towards Cannons Creek (Route Section 8)



19) Aerial view to the east looking up Cannons Creek in the vicinity of the Takapu substation (Route Section 8)



20) View to the south up Duck Creek towards Cannons Creek from lower Belmont Regional Park (Route Section 8)



21) View to the north down Duck Creek towards James Cook Interchange from lower Belmont Regional Park (Route Section 7 and 8)

Landscape Context Photos



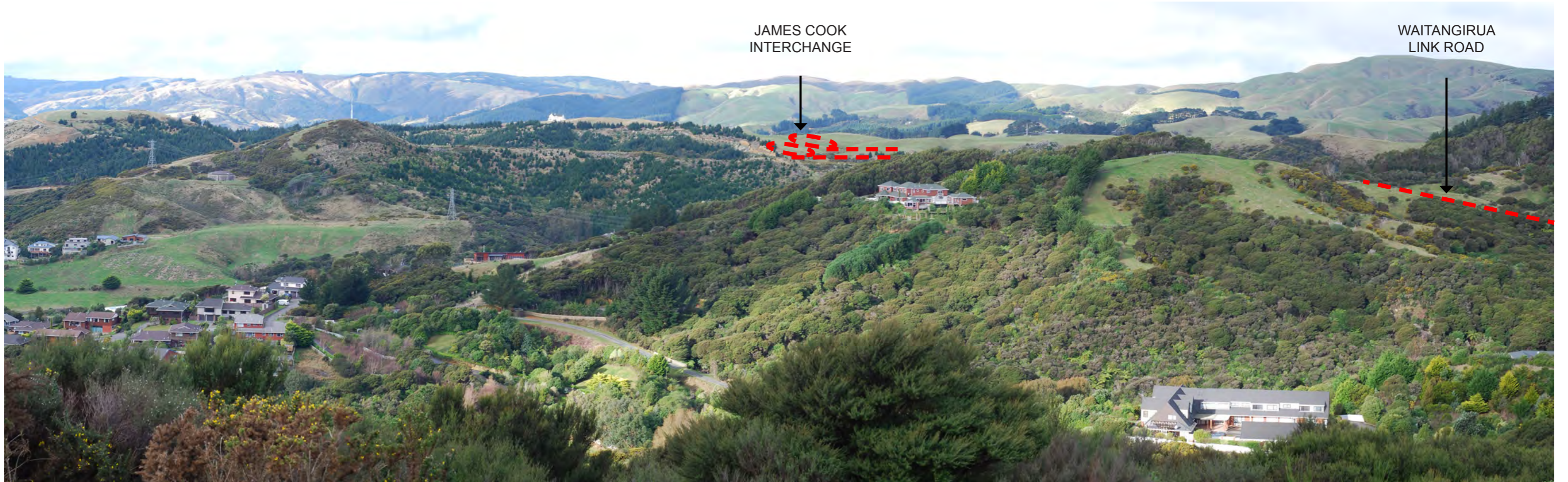
22) View to the south across Porirua East basin and backdrop hills from Aotea (Route Section 8 and 9)



23) View to the south towards Kenepuru Interchange from Porirua Train Station (Route Section 9)



24) View to the east towards Kenepuru Interchnage from Victory Crescent (Tawa) (Route Section 9)



25) View to the east from Upper Whitby towards James Cook Interchange and PCC Link Roads (Route Section 7)



26) View to the southeast from upper Whitby towards Belmont hills (distant) and Waitangirua Link Road



27) View to the east from Waitangirua Shopping Centre towards Waitangirua Link Road