

SH2 Waihi to Tauranga Corridor - \$520M investment announced



The NZ Transport Agency has been exploring ways to improve the safety and efficiency of the State Highway 2 (SH2) Corridor between Waihi and Tauranga.

The recently completed business case identifies a preferred programme to make SH2 a more reliable and safer road. In April 2016, the Transport Agency Board approved the funding and the Transport Minister, Hon Simon Bridges, announced a \$520million programme to transform the Waihi to Tauranga Corridor. Over the next 10+ years, five key packages of work will focus on improving road safety, providing more reliable journey times and supporting growth along one of New Zealand's highest risk and fastest growing travel routes.

How the programme was developed

The programme business case was developed to better understand and prioritise the key transport problems for the Corridor. A range of alternatives and options were developed and tested against the investment objectives that the Transport Agency was seeking. Feedback was also sought from key stakeholders and those who use and live along the route.

Why the programme was selected

The preferred programme (see map on back page) was selected because it best met the investment objectives (improving road safety, supporting economic development and regional growth), and provided the most economically efficient solution, with the least amount of risk.

How the programme will be delivered

There are five key packages of work as part of the SH2 Waihi to Tauranga Corridor programme. The locations and timings of each package are shown on the map on the back page. Work continues now to develop the detailed solutions for each package and implement them at the appropriate time. Meanwhile, the Tauranga Northern Link moves into a pre-implementation stage to complete the purchase of property, develop a design for consenting, and procure a design and construct team to build the new road.

How you can find out more

A copy of the SH2 Waihi to Tauranga Programme Business Case is available from the Transport Agency on request.

Corridor investment objectives

- Reduce death and serious injury by 50%
- Improve the KiwiRAP star rating from 2 to 3 stars

Omokoroa to Tauranga investment objectives

- Increase vehicle capacity to meet the future growth demands
- Provide consistent and reliable travel times during peak periods



Keeping you informed

The Transport Agency recognises that the recently announced funding package affects landowners and road users.

Consultation with the affected landowners, key stakeholders and the community will take place. Public open days will be held to provide those interested an opportunity to talk with members of the project team and view the latest project information.

Public open days

Thursday 28 July - Katikati
 Friday 29 July - Te Puna
 Saturday 30 July - Omokoroa
(Times and venues to be confirmed)

If you have any questions talk to the Transport Agency

- ✉ Email: Waihi2TGA@nzta.govt.nz
- ☎ Phone: 07 927 6009

Construction funding for the Tauranga Northern Link

The Transport Agency has received the green light to build the Tauranga Northern Link (TNL).

The Government agreed to fund construction of the TNL as part of the \$520 million Waihi to Tauranga Corridor programme to improve road safety, support economic development and regional growth along this busy regional highway.

The new 6.8km section of state highway will connect Takitimu Drive Toll Road through to Loop Road, just west of Te Puna. The TNL will be a four lane median divided expressway with a grade separated interchange located at Minden Road, with on and off ramps in each direction. It will include a new bridge crossing the Wairoa River and an underpass will take the TNL under both Wairoa Road and Cambridge Road. The TNL will connect to the Takitimu Drive Toll Road and a new westbound single lane connection is planned from 15th Avenue to Takitimu Drive Toll Road.

Objectives

- Reduce death and serious injury
- Improve the safety and quality of the road (KiwiRAP)
- Increase capacity along this section
- Improve journey time reliability

Benefits

- Improved road safety
- Supports economic development and population growth

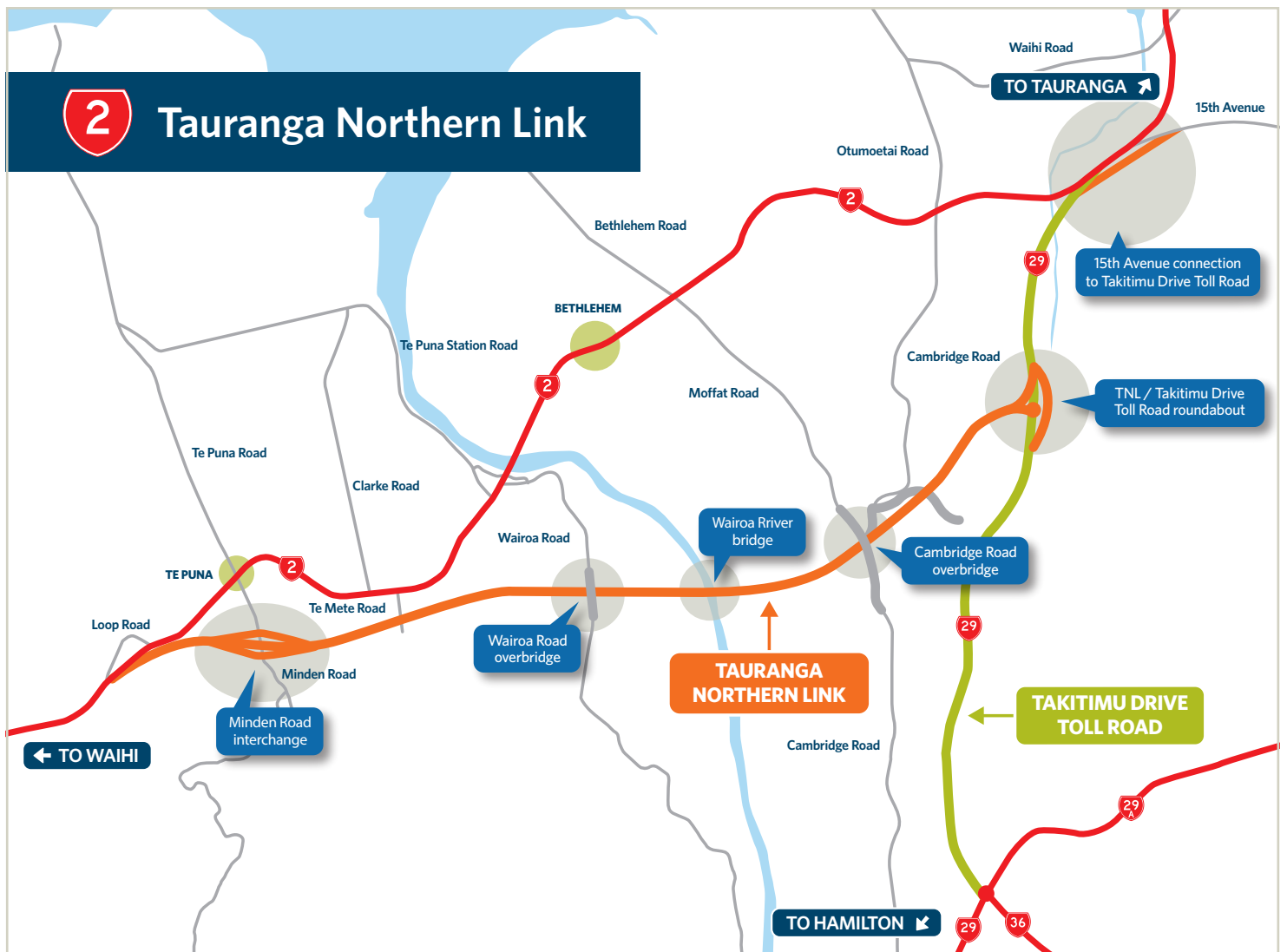
Proposed timings

2016 - 2018: Property purchases, consents, design, tolling feasibility and revocation plan

2018-2022: Construction

Estimated value

\$286 million



TNL frequently asked questions

What are the benefits of the TNL?

Once constructed, the Tauranga Northern Link will improve safety and support both economic development and population growth.

Where does the TNL go?

The Tauranga Northern Link is proposed as a 6.8km inland route from the Takitimu Drive Toll Road through to Loop Road, just west of Te Puna. It has been designated for over 10 years.

What is the problem with the existing state highway?

The rate of growth combined with existing safety, access and congestion issues means that we need to look at ways to improve this section of SH2.

Does this project include the Te Puna / Minden area?

The TNL extends to Loop Road and includes the Te Puna and the Minden areas.

Why do we need the TNL now?

There is growing concern as to the safety of SH2 and the route's ability to meet the future growth and transport demands. Currently, approximately 18,500 vehicles travel across the Wairoa River bridge each day.

The population of areas served by the highway is growing. Considerable horticulture-related growth (eg avocado and kiwifruit) is expected in the northern Bay of Plenty over the next 30 years. A large amount of produce is transported via SH2 to the Port of Tauranga for export.

By 2031, traffic numbers are predicted to increase to over 30,000 vehicles per day, worsening safety and congestion issues, as well as increasing costs for freight operators.

From what was once a rural road passing through a few country settlements this 57km section of state highway has developed into a busy commuter, agribusiness and regional freight route, local road, and a popular tourist link between Bay of Plenty and the Coromandel Peninsula.

The TNL is a key part of the region's SmartGrowth strategy.

When will the TNL be built?

Construction is programmed to take place between 2018-2022.

Who is building it?

A competitive procurement process will be undertaken to select a contractor to build the TNL.

What will it cost?

The estimated value of the TNL is \$286million.

Will it be tolled?

It is Transport Agency policy that all new state highway projects are tested for tolling feasibility. The outcomes of this testing can be expected in 2017.

What is being done between now and 2018?

Over the next two years the Transport Agency will be working with affected land owners to purchase the remaining land required for the project, applying for the necessary consents, refining the design and completing the tolling feasibility report and revocation plan.

How much land do you need to purchase?

Over 70% of the land required for the TNL has been purchased.

I am an affected landowner, where can I get more information?

Landowners can go to Land Information New Zealand (LINZ) website for more information www.linz.govt.nz/crown-property/acquisition-and-disposal-land/public-works

LINZ also produces a booklet, Landowners' Rights When the Crown Requires Your Land for a Public Work, to inform landowners of their rights in the negotiations to acquire land for a public work. It also explains the role of accredited suppliers in those negotiations.

You can browse this information online or download a printable version of this publication from their website www.linz.govt.nz

When are the Katikati Bypass and Omokoroa four-laning happening?

The issues at these locations are now included as part of the Waihi to Tauranga programme and detailed business cases will establish whether these options are the best way to achieve the programme objectives.

What is KiwiRAP?

The New Zealand Road Assessment Programme, KiwiRAP, analyses the road safety of the state highway network. Based on inspection of various design elements, the Star Rating provides an evaluation of the impact and severity those elements would have in a crash scenario.

It is a partnership between the NZ Automobile Association, NZ Transport Agency, Ministry of Transport, ACC and NZ Police.

For more information visit www.kiwirap.org.nz

Have questions about the Tauranga Northern Link? Please contact the Transport Agency



Visit our website www.nzta.govt.nz/tnl

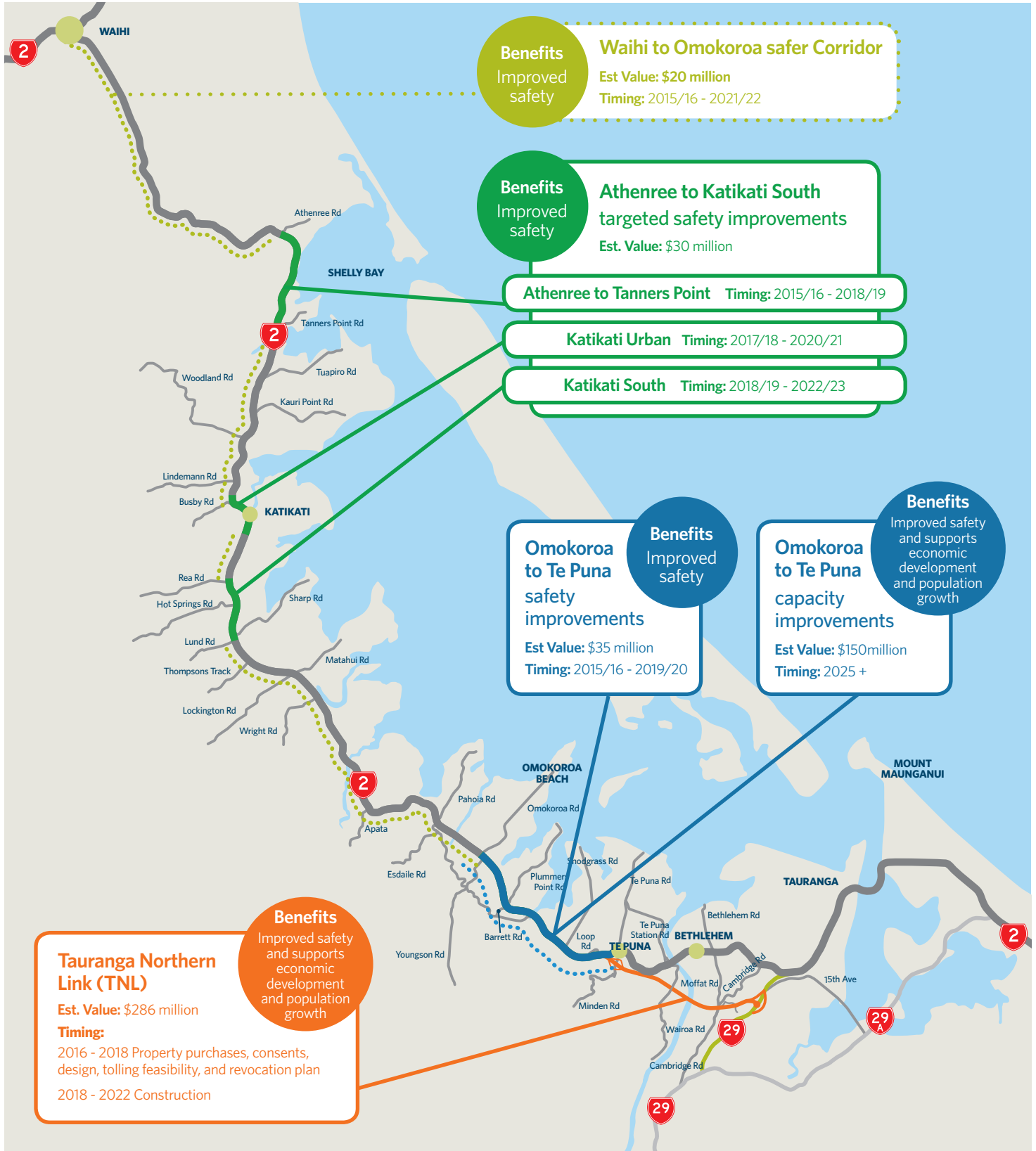


Email tauranganorthernlink@nzta.govt.nz



Phone 07 927 6009

Waihi to Tauranga Corridor investment programme



WHERE TO GO FOR MORE INFORMATION - WAIHI TO TAURANGA CORRIDOR



Visit our website www.nzta.govt.nz



Email Waihi2TGA@nzta.govt.nz



Phone 07 927 6009