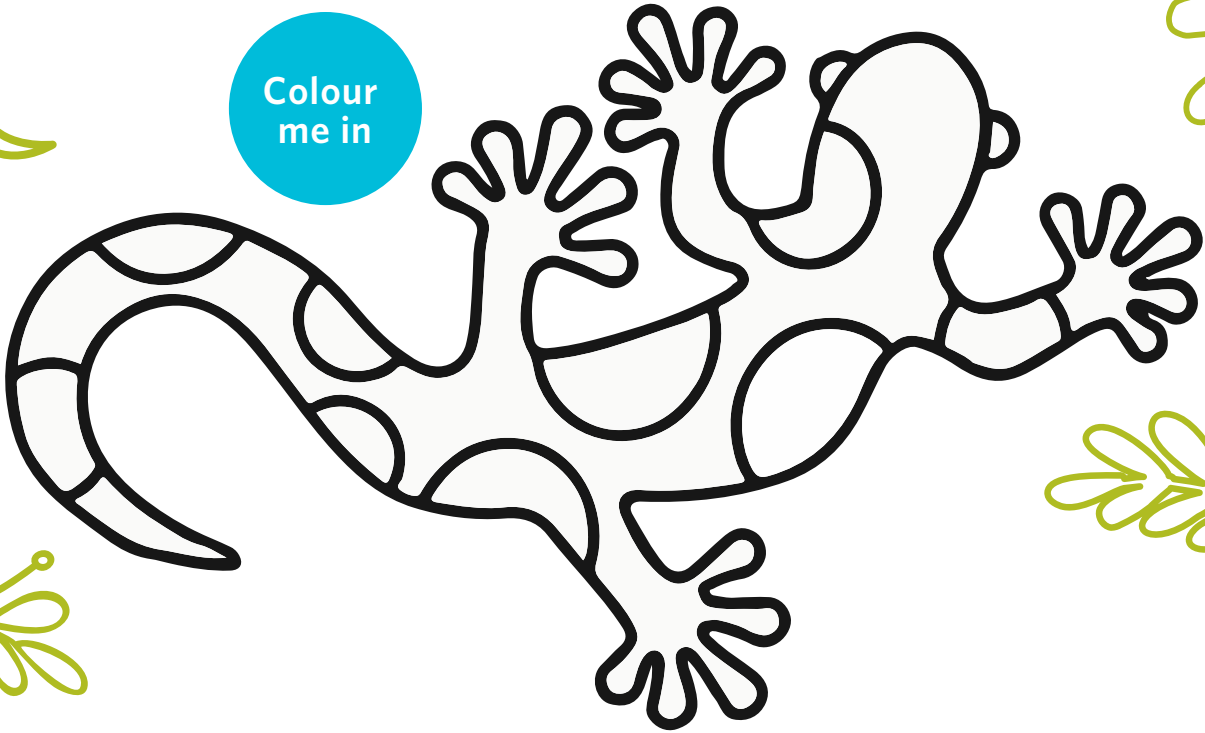


2

Takitimu North Link

There's lots to do to build a road! Let's learn about it

Colour
me in



1

Do you know why this stream is a zig-zag pattern?

- A. It looks nice
- B. The fish like it that way
- C. It was a mistake, it's meant to be straight



2

How many plants will be needed for the Takitimu North Link project?

- A. 500
- B. 400,000
- C. 900,000



Spot the difference

Looking after mokomoko (lizards) is part of our job too. We move these special native mokomoko so they are safe while we build the road.



3

Can you tell the difference between a native mokomoko and a pest lizard? It's tricky!

Colour me in



Did you know
The name Takitimu North Link acknowledges whakapapa to the Takitimu Waka, that arrived in Tauranga Moana.

Diggers and trucks are big and the driver may not see you, so watch us from a safe distance away.

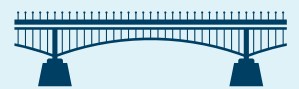
4

How many bridges will be built on the Takitimu North Link project?

- A. 3
- B. 8
- C. 10

Design your own bridge

There are many different bridge designs



What would yours look like?

ANSWERS: 1. The stream is zig-zag for fish passage (they like it!), nothing in nature is in a straight line. 2. C - 900,000 plants will be planted! 3. Left: Copper skin (native) and Right: Plague skin (pest); Plague skins can look quite similar and require an expert eye to inspect and confirm the difference. 4. B - eight bridges will be built!