



Landscape Character Area 1
Photomontage 1. MSRFL Weedons Road Interchange



Landscape Character Area 2
Photomontage 2. CSM2 and MSRFL Interchange at Robinsons Road




Landscape Character Area 2 & 3
Photomontage 3. Waterholes Road Overbridge (looking north)
Please Note: Detailed landscaping to either side of the CSM2 is not shown in this photomontage.





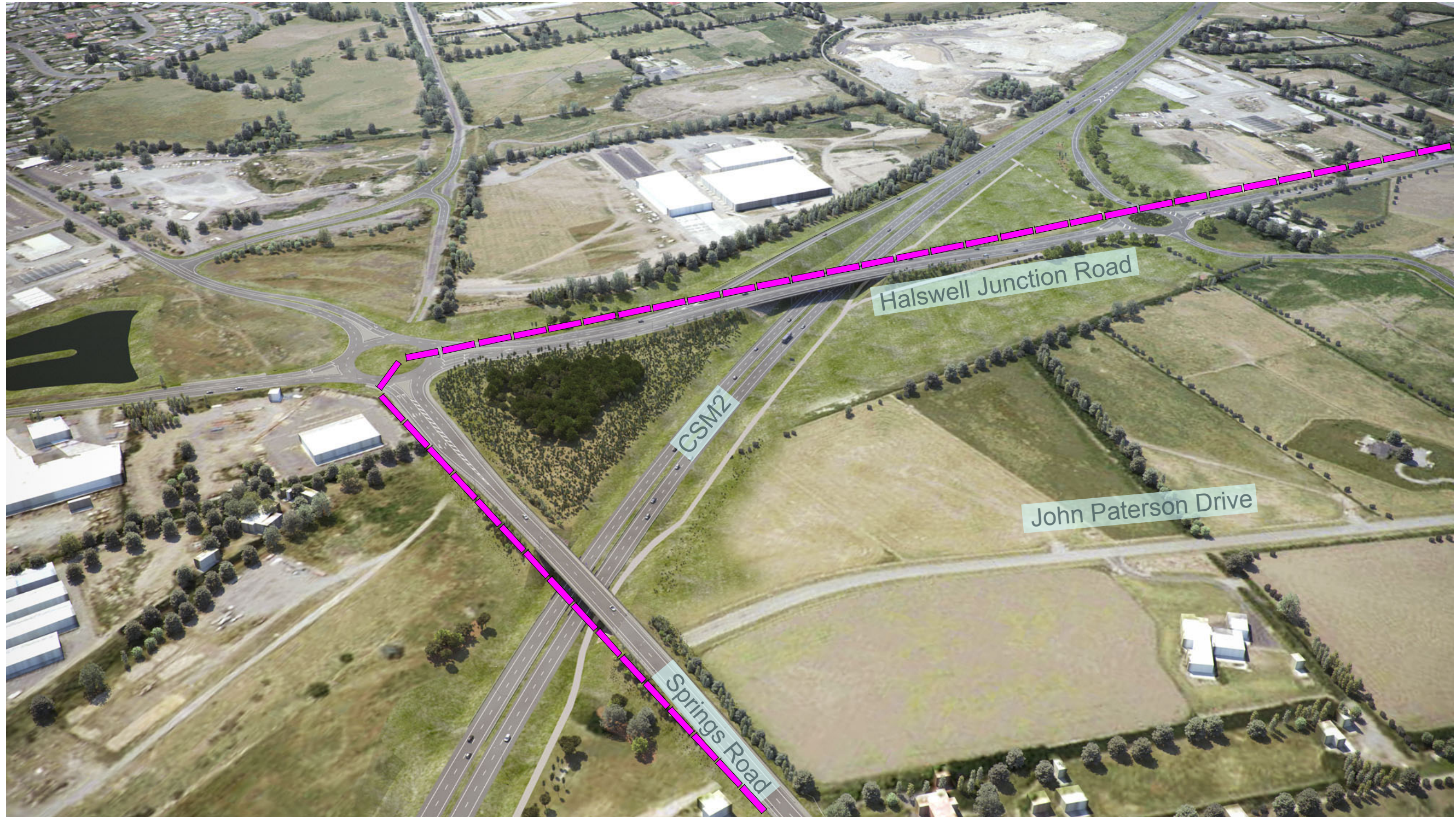
Landscape Character Area 3
Photomontage 4. Trents Road Overbridge (looking north)
Please Note: Detailed landscaping to either side of the CSM2 is not shown in this photomontage.



Landscape Character Area 4
 Photomontage 5. Shands Road Interchange

Please note: - The boundary (urban limit) to the area of land identified on 'RPS chapter 12A, map 1 - greenfield business area' (Greater Christchurch Urban Development Strategy) has been added to this photomontage, and is shown with this graphic: 

	NEW BUSINESS ZONE (PC54)
	POTENTIAL GATEWAY LOCATION BY CCC



Landscape Character Area 4

Photomontage 6. Springs Road Overbridge

Please Note: - The boundary (urban limit) to the area of land identified on 'RPS chapter 12A, map 1 - greenfield business area' (Greater

Christchurch Urban Development Strategy) has been added to this photomontage, and is shown with this graphic: 