

Southern
Corridor
Improvements

Project
Update



KEEPING LOCAL WATERWAYS CLEAN

Improving local waterways is all part of the Southern Corridor Improvements Project.

Motorists heading south may have noticed the new wetland area on the left after passing under Orams Road Bridge. Designed to create a low maintenance and more self-sustaining motorway, these wetland areas capture stormwater run-off from the motorway lanes.

The wetlands are not alone when it comes to new systems to look after the environment. Swales are also used, which are planted areas to filter out dirt and contaminants from the water before it makes its way into the stormwater system and local waterways.

Planting within these wetlands and swales promotes ecological value, as well as improving the water quality.

Specific native plants, suitable for damp areas, are used including *Apodasmia Similis* (Oioi), *Cyperus ustulatus* (Toetoe), *Carex lessonianan* (Rautahi), *Ficinia nodose* (Wiwi) and *Cordyline australis* (Ti Kouka).

The planted areas alongside the motorway may look a little bare now, however will grow to enhance the green motorway corridor, providing a natural habitat for insects and wildlife.

COMMUNITY INFORMATION EVENING

Join us at one of our two Community Information Evenings to meet the team and listen to a brief overview of what's coming up in the project's final year.

TAKANINI:

Time 5.30pm to 7.00pm, project team presentation at 6pm

Date Tuesday 12 February, 2019

Venue Southern Corridor Improvements Project office, 8-12 Great South Road, Takanini (near the Takanini Interchange, behind the Gull Petrol Station)

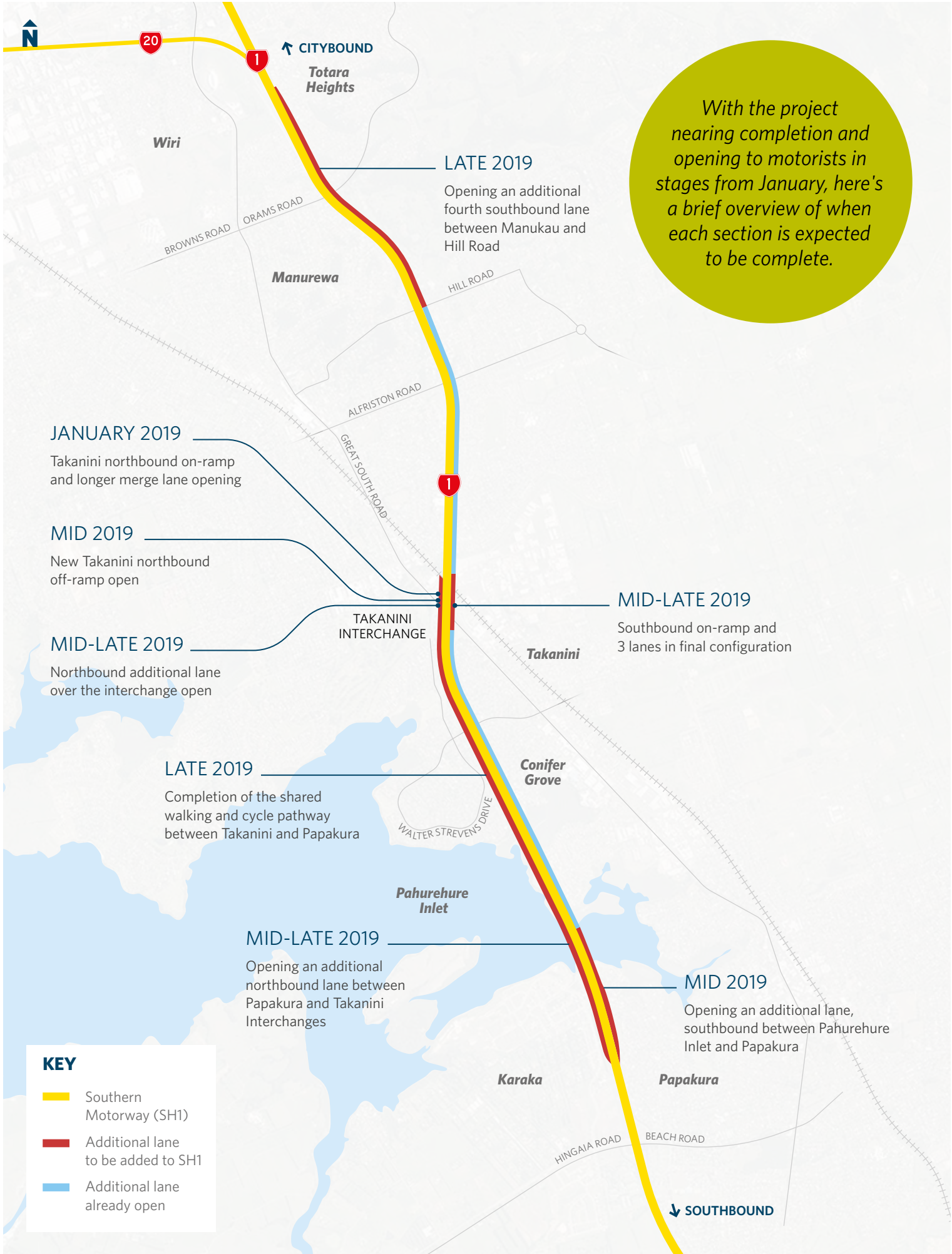
PUKEKOHE:

Time 5.30pm to 7.00pm, project team presentation at 6pm

Date Tuesday 19 February, 2019

Venue Pukekohe East Community Centre, 232 Pukekohe East Road, Pukekohe

COMPLETION DATES



CONTINUALLY IMPROVING WHAT WE DO

With a project of this scale, our team continuously challenges the way it constructs each part of the job and seeks to identify sections of work that can be accelerated in order to deliver benefits to the community and motorists sooner.

We recently made the decision to partially open the new Takanini northbound on-ramp earlier than planned so the construction crews could gain access to the area required to build the new off-ramp.

Opening the project in stages as each section is complete will mean motorists experience benefits sooner, helping to remove bottlenecks and ease congestion in this busy area.



WORK OVER THE HOLIDAY SEASON

As the festive season approaches, it's a busy time on our roads with Christmas shopping and travel during the holiday period.

From 21 December onward, construction work will be limited to reduce congestion and minimise disruption to neighbouring property owners. Our crews will however, continue to work on the critical areas of

the project, such as around the Takanini Interchange, southbound widening at Hill Road and work close to the railway line.

We would like to wish customers and project neighbours a very Merry Christmas and thank you for your ongoing co-operation while we complete the motorway upgrades.



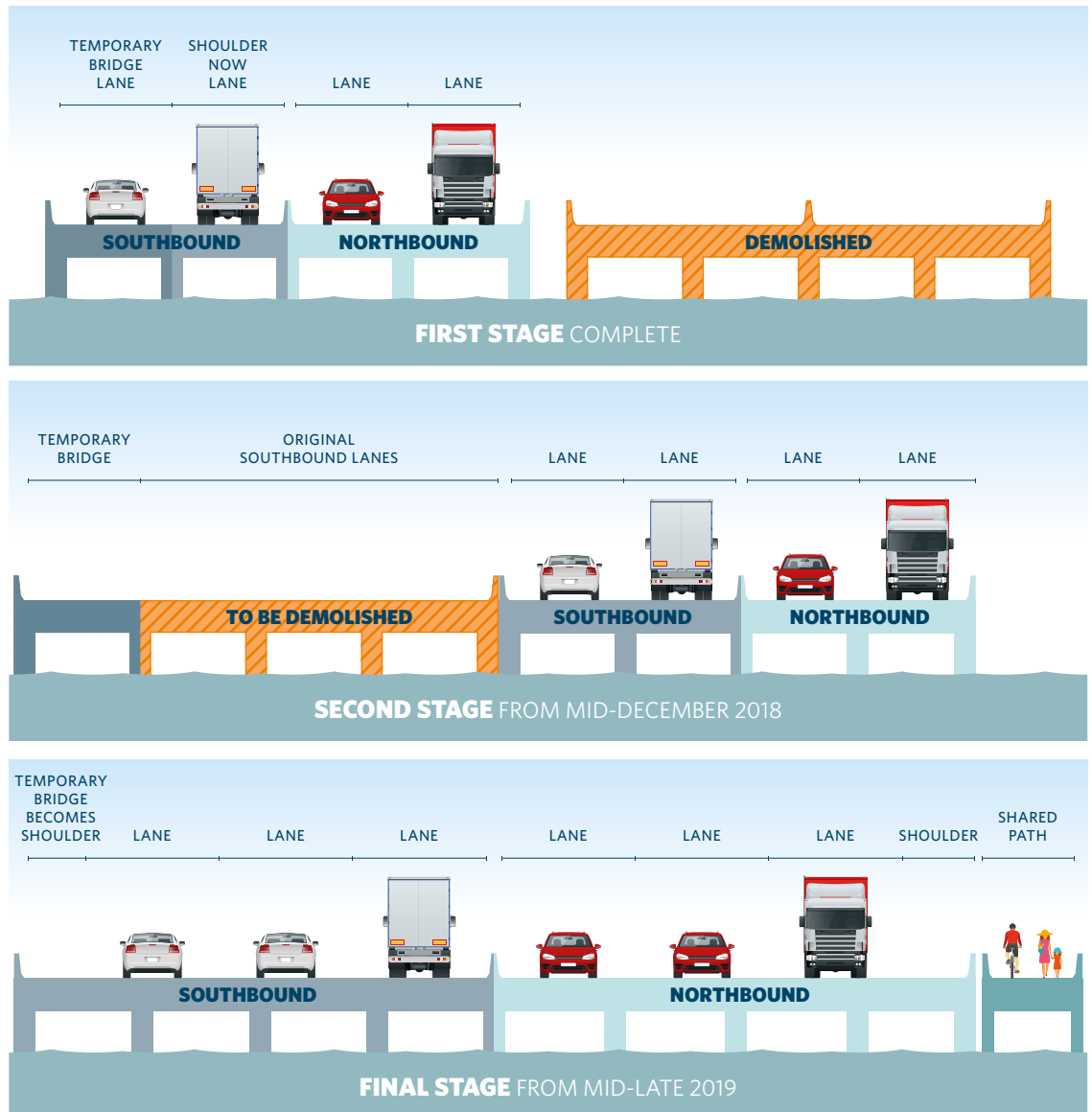
PAHUREHURE INLET BRIDGES

From December, lane layout changes will be in place on the bridges over the Pahurehure Inlet as part of the reconstruction.

To undertake this work, while also keeping the motorway operating, requires careful planning and a staged approach. Since March 2018, motorists have been driving on the original southbound lanes to travel in both directions. With the northbound lanes now completed, the new changes will see motorists using the western side of the bridge as the eastern side is demolished and reconstructed.

Lane layout changes will take place in stages with the northbound traffic moving first, followed by the southbound traffic. There will be minimal impact to motorists driving in this area as two lanes of traffic will be maintained at all times.

These bridges are being replaced and raised by one-metre to future-proof against rising sea levels. The bridges will also be widened to allow for another lane in each direction, providing three lanes in each direction to increase capacity and help reduce congestion.



MORE LANES OPEN JANUARY

Motorists travelling through Takanini Interchange will notice a significant difference from January

Following the opening of a section of the new northbound on-ramp loop in September, the merge lane will open in January 2019. Built alongside the existing motorway, the new northbound on-ramp will provide a dedicated

merge lane onto SH1 and will help to ease congestion for motorists heading north.

The new and improved Takanini Interchange will reduce known safety risks, improve traffic flow and provide a more reliable trip for commuters.



New Takanini northbound on-ramp nearing completion

KEEP INFORMED

We aim to keep everyone up to date with progress and planning work. A weekly traffic notice is sent via email advising of road closures and impacts. We also send regular construction updates and progress photos. Visit our website to sign up.

CONTACT:

Freephone:
0508 NZTA SCI (0508 6982 724)

Email: southerncorridor@nzta.govt.nz

Visit: 8-12 Great South Road,
Takanini (behind Gull)

Website: [www.nzta.govt.nz/
auckland-southern-corridor](http://www.nzta.govt.nz/auckland-southern-corridor)

To request a translation of this information please email southerncorridor@nzta.govt.nz or call 0508 NZTA SCI (0508 6982 724).

Ki te hiahia kia reo Maori tenei panui, tuku imera ki southerncorridor@nzta.govt.nz waea atu ranei ki 0508 NZTA SCI (0508 6982 724).

若需要该信息及《反馈表》中文译本，请发送电子邮件至 southerncorridor@nzta.govt.nz 或致电 0508 NZTA SCI (0508 6982 724)。

A manaomia se faaliliuina o nei faamatalaga ma pepa e tusia mai ai ni manatu, faamolemole emeli mai ile southerncorridor@nzta.govt.nz poo le telefoni 0508 NZTA SCI (0508 6982 724).