

---

**NZ TRANSPORT AGENCY  
SH8 BEAUMONT OTAGO  
NEW BEAUMONT BRIDGE**

---

**ISSUED FOR RMA APPROVALS**

Project No: 6-CT012.00  
Date: OCTOBER 2019

**wsp | OPUS**



**NZ TRANSPORT AGENCY  
WAKA KOTAHĪ**

0 10 mm 50 100 200 300 mm

SHEET INDEX TABLE			
SHEET No.	REVISION	DRAWING TITLE	
C01	B	DRAWING INDEX	CIVIL WORKS
C02	B	OVERALL LAYOUT PLAN	RP 5615 - 7100
C03	B	PROPOSED SH8 CENTRELINE LONGITUDINAL SECTION	RP 5659 - 7095
C04	B	LAYOUT PLAN	RP 5615 - 6200
C05	B	LAYOUT PLAN	RP 6200 - 6600
C06	B	LAYOUT PLAN	RP 6600 - 7100
C07	B	TYPICAL CROSS SECTIONS	S1 TO S4
C08	B	TYPICAL CROSS SECTIONS	S5 TO S6
C09	B	TYPICAL CROSS SECTIONS	S7 TO S10
P01	B	BRIDGE GENERAL ARRANGEMENT	PLAN AND SECTION
P02	C	BRIDGE GENERAL ARRANGEMENT	ABUTMENT
P03	B	BRIDGE GENERAL ARRANGEMENT	PIER AND MIDSPAN ELEVATIONS

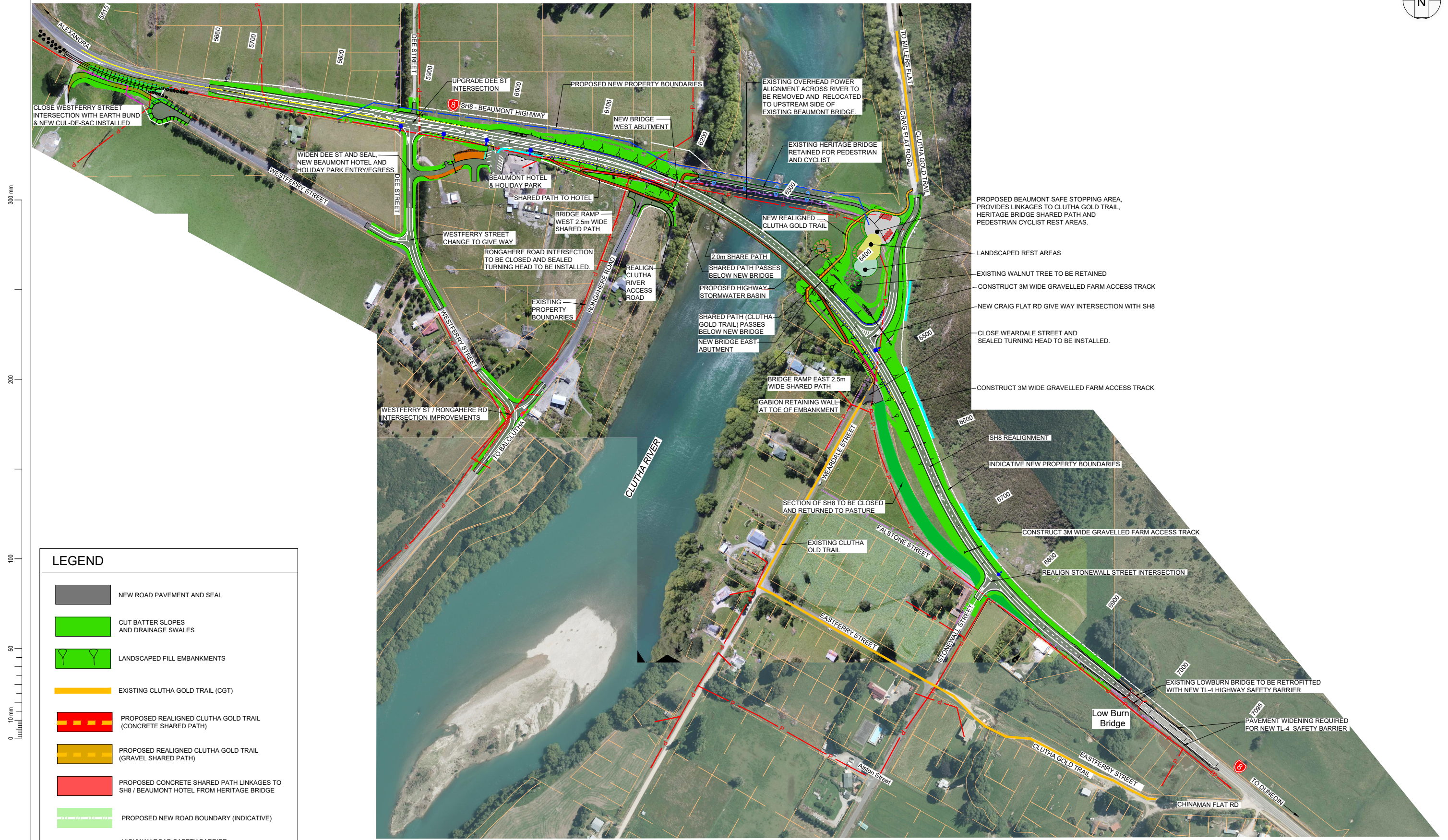
ISSUED FOR RMA APPROVALS

Revision	Amendment	Approved	Revision Date
A	ISSUED FOR RMA APPROVALS	MD	21/08/2019
B	REVISIONS UPDATED	MD	14/10/2019
















Alexandra Office +64 3 440 2400	PO Box 273 Alexandra 9340 New Zealand
Designed	Approved
B MULHOLLAND	M DAVIES
Drawn	Scales
B MULHOLLAND	N.A.

Project NZ TRANSPORT AGENCY SH8 BEAUMONT OTAGO RS 401 / 6300 NEW BEAUMONT BRIDGE	
Sheet SHEET INDEX CIVIL WORKS	
Project No.	Sheet No. / Revision
6-CT012.00	C01 / B



300 mm  
200  
100  
50  
10 mm  
0

**LEGEND**

-  NEW ROAD PAVEMENT AND SEAL
-  CUT BATTER SLOPES AND DRAINAGE SWALES
-  LANDSCAPED FILL EMBANKMENTS
-  EXISTING CLUTHA GOLD TRAIL (CGT)
-  PROPOSED REALIGNED CLUTHA GOLD TRAIL (CONCRETE SHARED PATH)
-  PROPOSED REALIGNED CLUTHA GOLD TRAIL (GRAVEL SHARED PATH)
-  PROPOSED CONCRETE SHARED PATH LINKAGES TO SH8 / BEAUMONT HOTEL FROM HERITAGE BRIDGE
-  PROPOSED NEW ROAD BOUNDARY (INDICATIVE)
-  HIGHWAY ROAD SAFETY BARRIER
-  LIGHTING COLUMN (NEW)
-  PROPOSED OVERHEAD POWER REALIGNMENT ROUTE (INDICATIVE)
-  EXISTING OVERHEAD POWER CABLES
-  EXISTING CHORUS CABLES

Revision	Amendment	Approved	Revision Date
A	ISSUED FOR RMA APPROVALS	MD	21/08/2019
B	TITLEBLOCK UPDATED	MD	14/10/2019



**wsp | OPUS**

Alexandra Office  
+64 3 440 2400

PO Box 273  
Alexandra 9340  
New Zealand

DESIGNED	Approved	Approved Date
B MULHOLLAND	M DAVIES	14/10/2019
Drawn	Scales	
B MULHOLLAND	A1 1:2000 (A3 1:4000)	

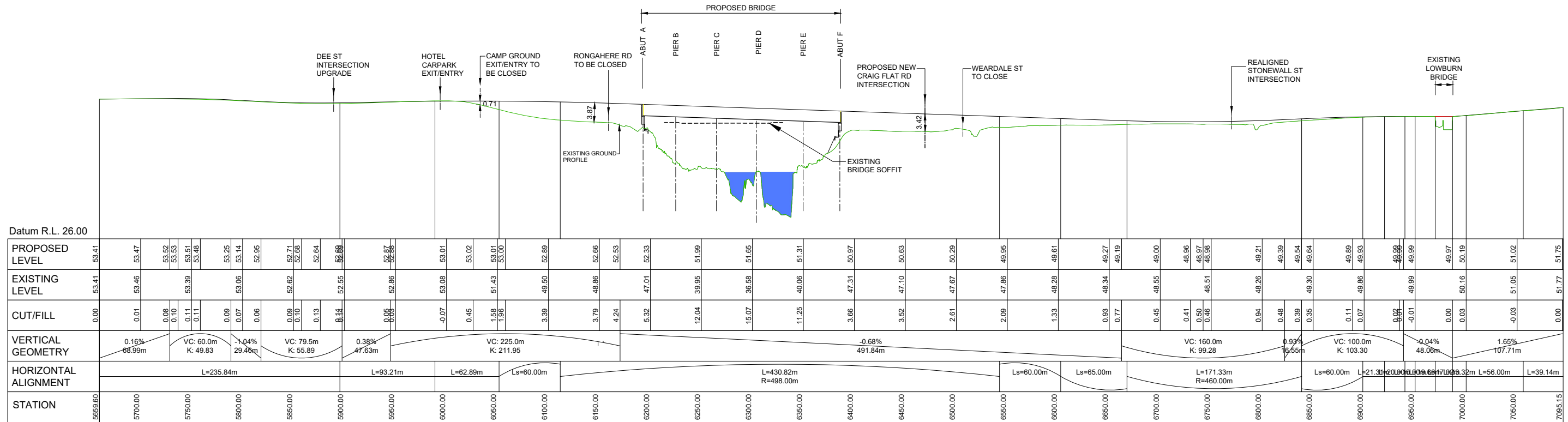
Project  
NZ TRANSPORT AGENCY  
SH8 BEAUMONT OTAGO RS 401 / 6300  
NEW BEAUMONT BRIDGE

Sheet  
**OVERALL LAYOUT PLAN**  
RP 5615 - 7100

Project No.	Sheet No.	Revision
6-CT012.00	C02	B

ISSUED FOR RMA APPROVALS


300 mm  
200  
100  
50  
0 10 mm




PROPOSED ROAD CENTRELIN LONGSECTION

ISSUED FOR RMA APPROVALS

Revision	Amendment	Approved	Revision Date
A	ISSUED FOR RMA APPROVALS	MD	21/08/2019
B	ADDED RIVER HATCH	MD	14/10/2019



**NZ TRANSPORT AGENCY**  
WAKA KOTAHU



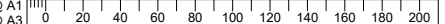
**Alexandra Office**  
+64 3 440 2400  
PO Box 273  
Alexandra 9340  
New Zealand

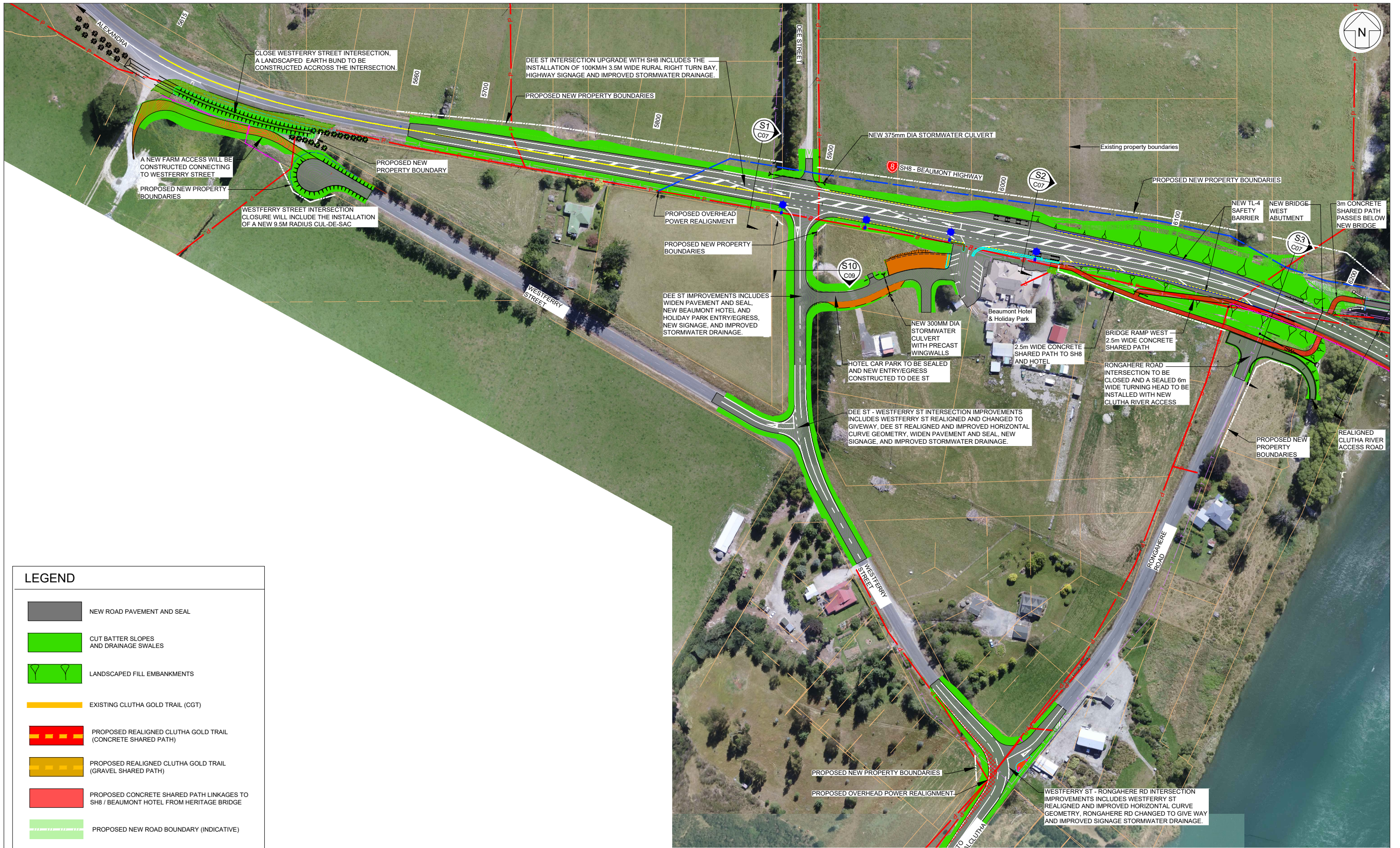
**Project**  
NZ TRANSPORT AGENCY  
SH8 BEAUMONT OTAGO RS 401 / 6300  
NEW BEAUMONT BRIDGE

**Sheet**  
PROPOSED SH8 CENTRELIN LONGITUDINAL SECTION  
RP 5659 - 7095

Designed	Approved	Approved Date	Project No.	Sheet No.	Revision
B MULHOLLAND	M DAVIES	14/10/2019	6-CT012.00	C03	B
Drawn	Scales				
B MULHOLLAND	Hz: A1 1:2000 (A3 1:4000) Vt: A1 1:400				

1:2000@ A1  
1:4000@ A3





300 mm  
200  
100  
0 10 mm

LEGEND	
	NEW ROAD PAVEMENT AND SEAL
	CUT BATTER SLOPES AND DRAINAGE SWALES
	LANDSCAPED FILL EMBANKMENTS
	EXISTING CLUTHA GOLD TRAIL (CGT)
	PROPOSED REALIGNED CLUTHA GOLD TRAIL (CONCRETE SHARED PATH)
	PROPOSED REALIGNED CLUTHA GOLD TRAIL (GRAVEL SHARED PATH)
	PROPOSED CONCRETE SHARED PATH LINKAGES TO SH8 / BEAUMONT HOTEL FROM HERITAGE BRIDGE
	PROPOSED NEW ROAD BOUNDARY (INDICATIVE)
	HIGHWAY ROAD SAFETY BARRIER
	LIGHTING COLUMN (NEW)
	PROPOSED OVERHEAD POWER REALIGNMENT ROUTE (INDICATIVE)
	EXISTING OVERHEAD POWER CABLES
	EXISTING CHORUS CABLES

1:1000 @ A1  
1:2000 @ A3

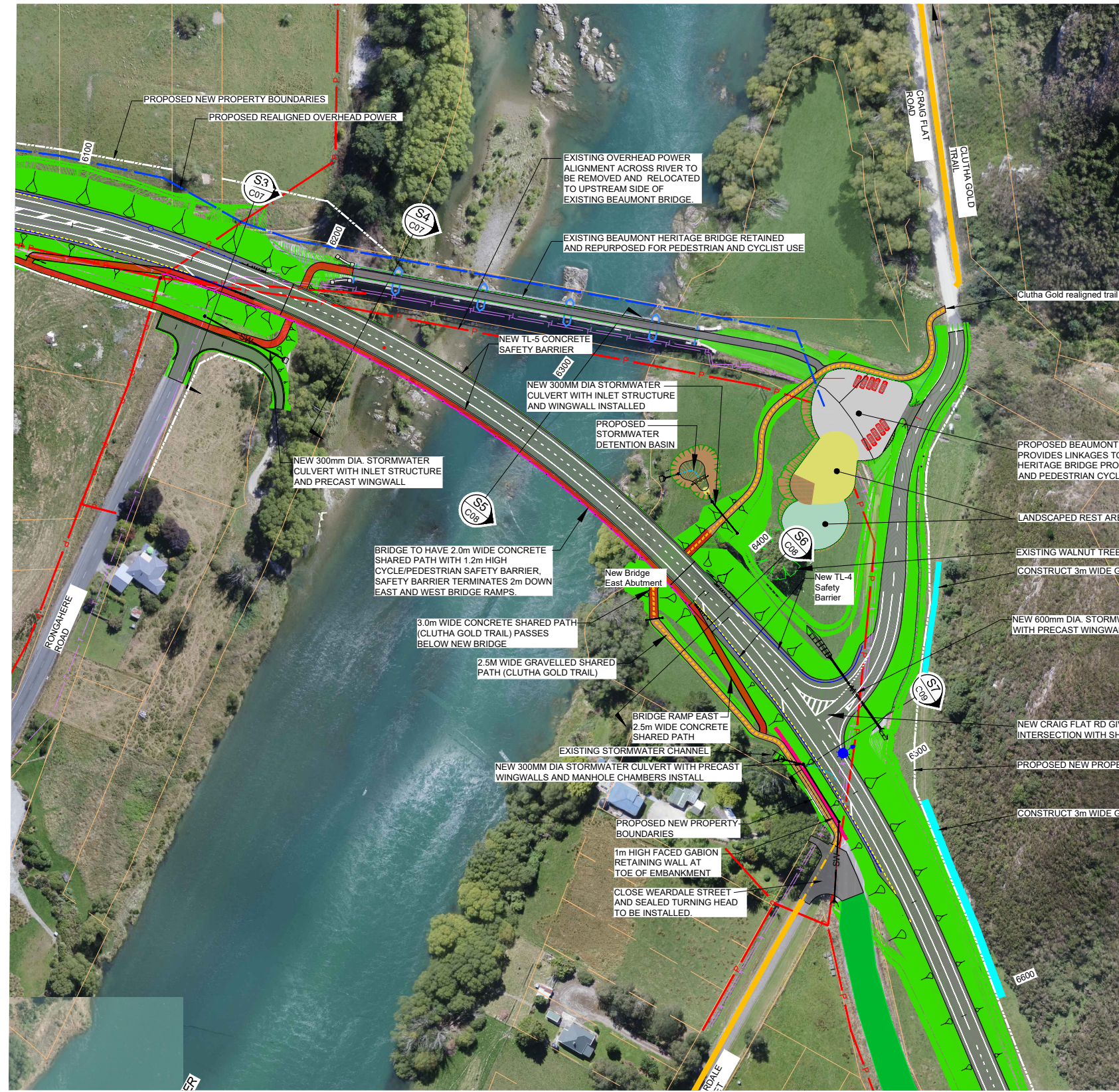
ISSUED FOR RMA APPROVALS

Revision	Amendment	Approved	Revision Date
A	ISSUED FOR RMA APPROVALS	MD	21/08/2019
B	TITLEBLOCK UPDATED	MD	14/10/2019



<b>wsp OPUS</b>	
Alexandra Office +64 3 440 2400	PO Box 273 Alexandra 9340 New Zealand
Designed B MULHOLLAND	Approved M DAVIES
Drawn B MULHOLLAND	Approved Date 14/10/2019
Scale A1 1:1000 (A3 1:2000)	Project No. 6-CT012.00

Project NZ TRANSPORT AGENCY SH8 BEAUMONT OTAGO RS 401 / 6300 NEW BEAUMONT BRIDGE	
Sheet LAYOUT PLAN RP 5615 - 6200	
Sheet No. C04	Revision B



300 mm  
200  
100  
50  
10 mm  
0

### LEGEND

- NEW ROAD PAVEMENT AND SEAL
- CUT BATTER SLOPES AND DRAINAGE SWALES
- LANDSCAPED FILL EMBANKMENTS
- EXISTING CLUTHA GOLD TRAIL (CGT)
- PROPOSED REALIGNED CLUTHA GOLD TRAIL (CONCRETE SHARED PATH)
- PROPOSED REALIGNED CLUTHA GOLD TRAIL (GRAVEL SHARED PATH)
- PROPOSED CONCRETE SHARED PATH LINKAGES TO SH8 / BEAUMONT HOTEL FROM HERITAGE BRIDGE
- PROPOSED NEW ROAD BOUNDARY (INDICATIVE)
- HIGHWAY ROAD SAFETY BARRIER
- LIGHTING COLUMN (NEW)
- PROPOSED OVERHEAD POWER REALIGNMENT ROUTE (INDICATIVE)
- EXISTING OVERHEAD POWER CABLES
- EXISTING CHORUS CABLES

Revision	Amendment	Approved	Revision Date
A	ISSUED FOR RMA APPROVALS	MD	21/08/2019
B	TITLEBLOCK UPDATED	MD	14/10/2019



<b>wsp   OPUS</b>	
Alexandra Office +64 3 440 2400	PO Box 273 Alexandra 9340 New Zealand
Designed B MULHOLLAND	Approved M DAVIES
Drawn B MULHOLLAND	Approved Date 14/10/2019
Scales A1 1:1000 (A3 1:2000)	

Project NZ TRANSPORT AGENCY SH8 BEAUMONT OTAGO RS 401 / 6300 NEW BEAUMONT BRIDGE	
Sheet LAYOUT PLAN RP 6200 - 6600	
Project No. 6-CT012.00	Sheet No. C05
Revision B	

ISSUED FOR RMA APPROVALS

300 mm  
200  
100  
50  
10 mm  
0



**LEGEND**

- NEW ROAD PAVEMENT AND SEAL
- CUT BATTER SLOPES AND DRAINAGE SWALES
- LANDSCAPED FILL EMBANKMENTS
- EXISTING CLUTHA GOLD TRAIL (CGT)
- PROPOSED REALIGNED CLUTHA GOLD TRAIL (CONCRETE SHARED PATH)
- PROPOSED REALIGNED CLUTHA GOLD TRAIL (GRAVEL SHARED PATH)
- PROPOSED CONCRETE SHARED PATH LINKAGES TO SH8 / BEAUMONT HOTEL FROM HERITAGE BRIDGE
- PROPOSED NEW ROAD BOUNDARY (INDICATIVE)
- HIGHWAY ROAD SAFETY BARRIER
- LIGHTING COLUMN (NEW)
- PROPOSED OVERHEAD POWER REALIGNMENT ROUTE (INDICATIVE)
- EXISTING OVERHEAD POWER CABLES
- EXISTING CHORUS CABLES

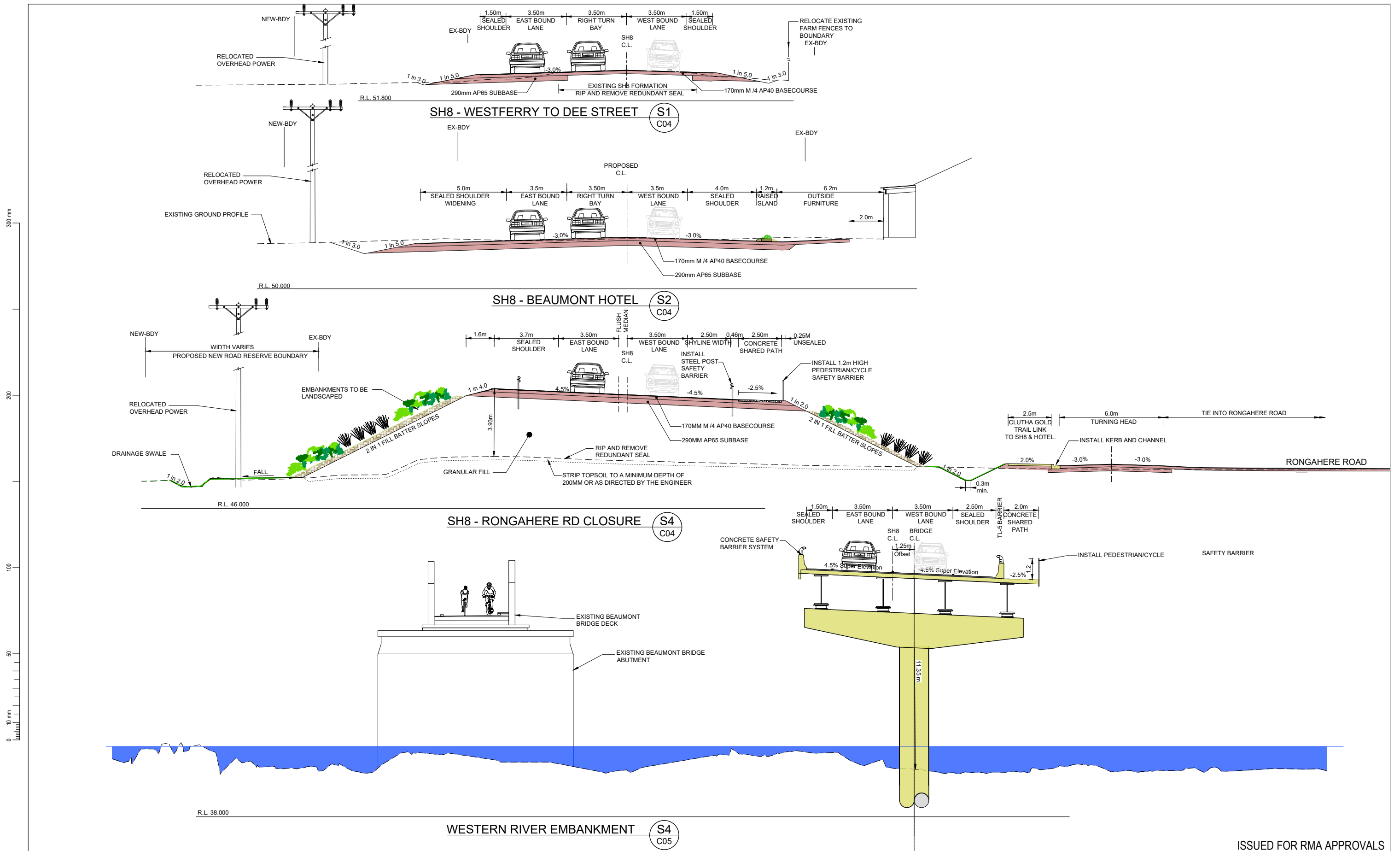
ISSUED FOR RMA APPROVALS

Revision	Amendment	Approved	Revision Date
A	ISSUED FOR RMA APPROVALS	MD	21/08/2019
B	TITLEBLOCK UPDATED	MD	14/10/2019



<b>wsp   OPUS</b>	
Alexandra Office +64 3 440 2400	PO Box 273 Alexandra 9340 New Zealand
Designed B MULHOLLAND	Approved M DAVIES
Drawn B MULHOLLAND	Approved Date 14/10/2019
Scales A1 1:1000 (A3 1:2000)	

Project NZ TRANSPORT AGENCY SH8 BEAUMONT OTAGO RS 401 / 6300 NEW BEAUMONT BRIDGE	
Sheet LAYOUT PLAN RP 6600 - 7100	
Project No. 6-CT012.00	Sheet No. C06
Revision B	



ISSUED FOR RMA APPROVALS

Revision	Amendment	Approved	Revision Date
A	ISSUED FOR RMA APPROVALS	MD	21/08/2019
B	TITLEBLOCK UPDATED	MD	14/10/2019

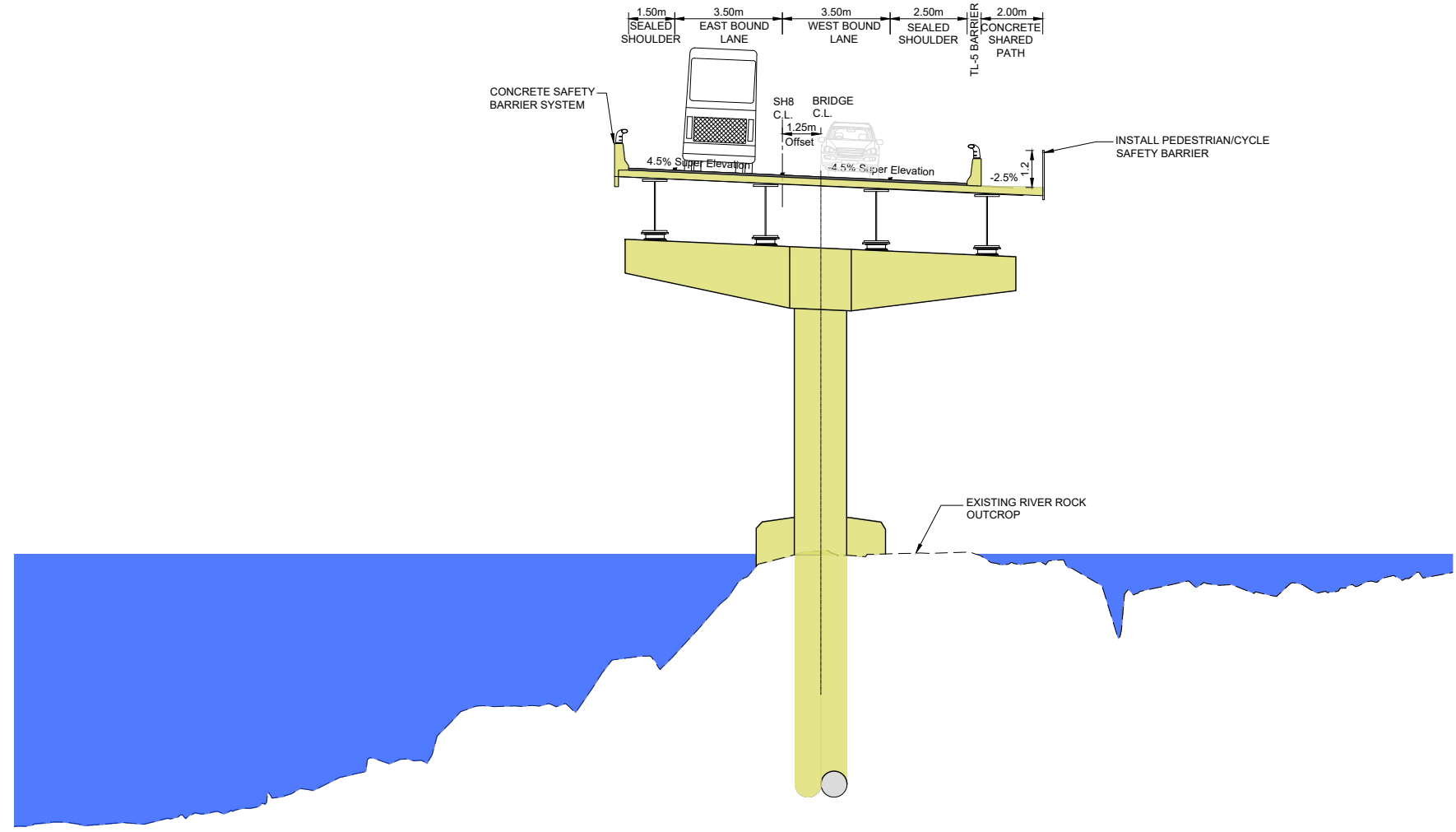


**wsp | OPUS**  
 Alexandra Office  
 +64 3 440 2400  
 PO Box 273  
 Alexandra 9340  
 New Zealand

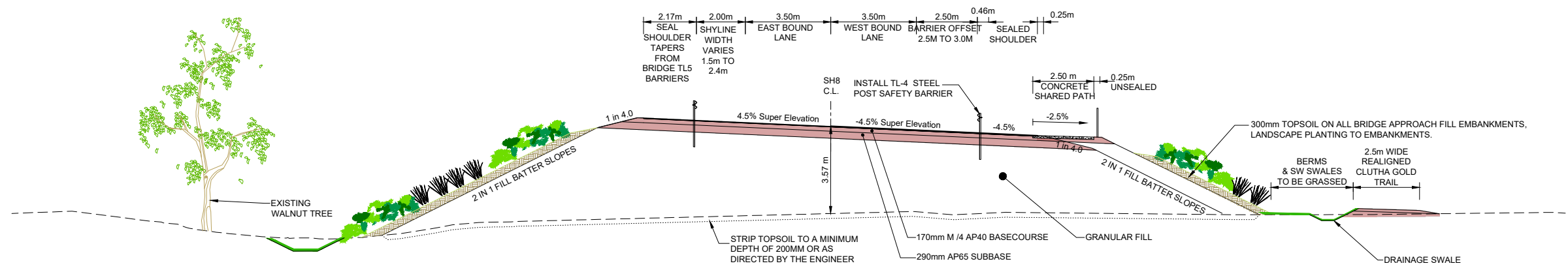
Project		NZ TRANSPORT AGENCY SH8 BEAUMONT OTAGO RS 401 / 6300 NEW BEAUMONT BRIDGE	
Sheet		TYPICAL CROSS SECTIONS - S1 TO S4	
Designed	Approved	Approved Date	
B MULHOLLAND	M DAVIES	14/10/2019	
Drawn	Scales	Project No.	Sheet No.
B MULHOLLAND	A1 1:100 (A3 1:200)	6-CT012.00	C07
			Revision
			B



300 mm  
200  
100  
50  
10 mm  
0



CLUTHA RIVER ROCK OUTCROP PIER LOCATION (S5 C05)

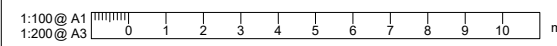


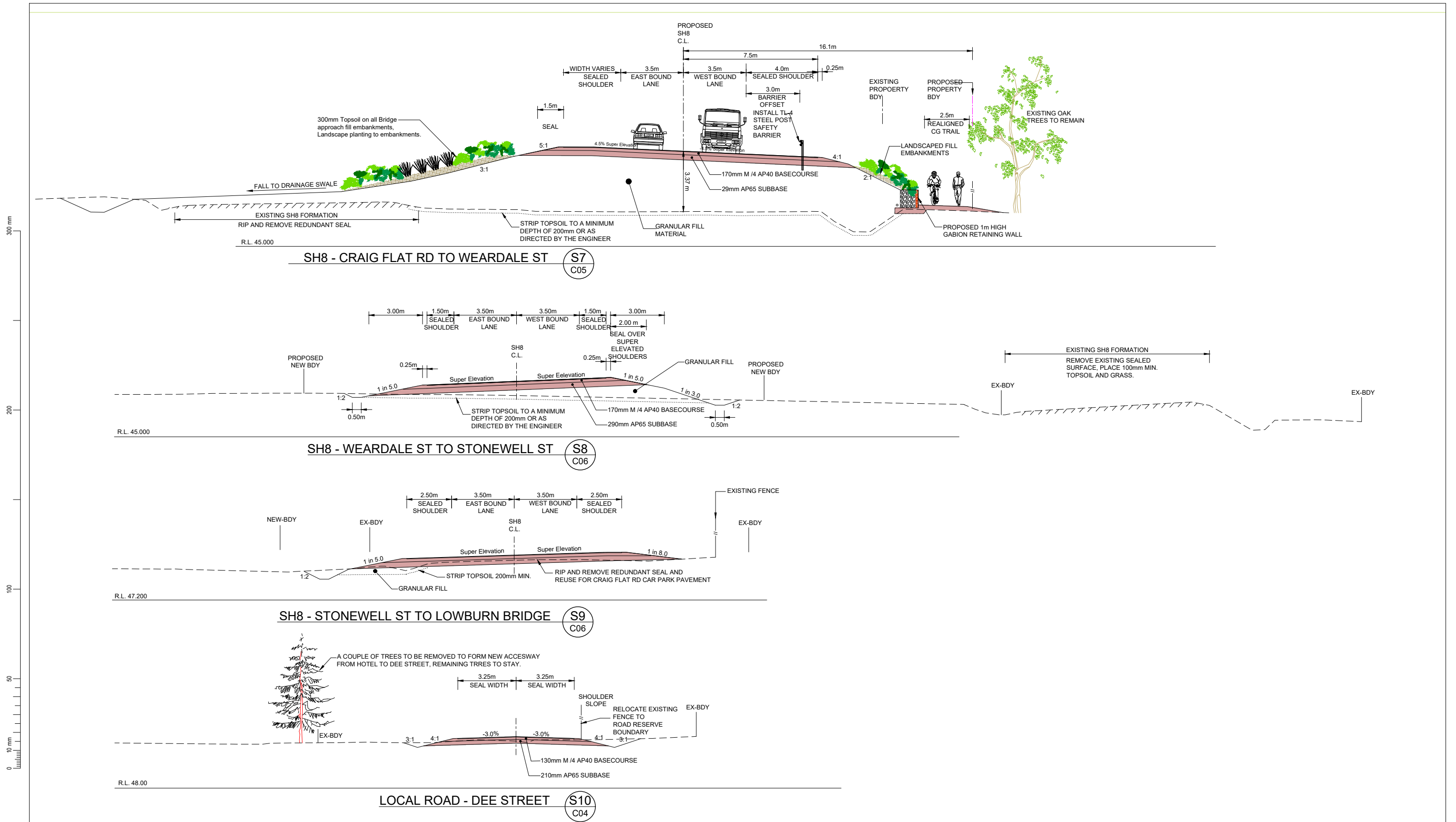
SH8 - BETWEEN EASTERN ABUTMENT AND CRAIG FLAT ROAD (S6 C05)

ISSUED FOR RMA APPROVALS

Revision	Amendment	Approved	Revision Date
A	ISSUED FOR RMA APPROVALS	MD	21/08/2019
B	TITLEBLOCK UPDATED	MD	14/10/2019

		Project NZ TRANSPORT AGENCY SH8 BEAUMONT OTAGO RS 401 / 6300 NEW BEAUMONT BRIDGE	
Alexandra Office +64 3 440 2400		PO Box 273 Alexandra 9340 New Zealand	
Designed	Approved	Approved Date	
B MULHOLLAND	M DAVIES	14/10/2019	
Drawn	Scales		Project No.
B MULHOLLAND	A1 1:100 (A3 1:200)		6-CT012.00
			Sheet No. / Revision
TYPICAL CROSS SECTIONS - S5 TO S6			C08 / B





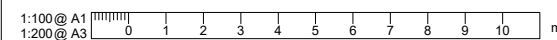
ISSUED FOR RMA APPROVALS

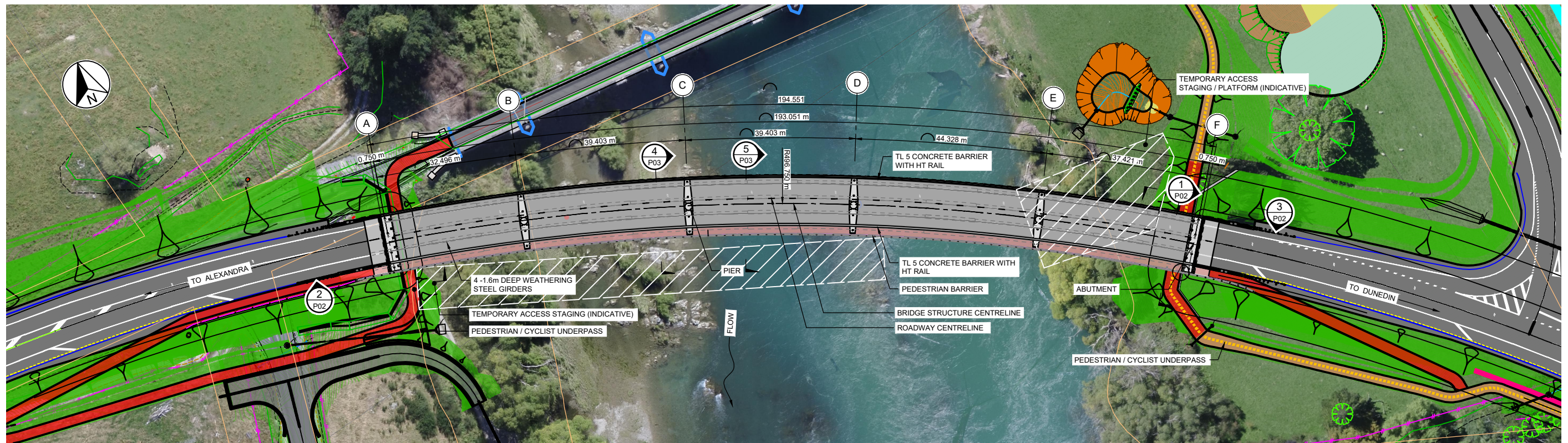
Revision	Amendment	Approved	Revision Date
A	ISSUED FOR RMA APPROVALS	MD	21/08/2019
B	TITLEBLOCK UPDATED	MD	14/10/2019



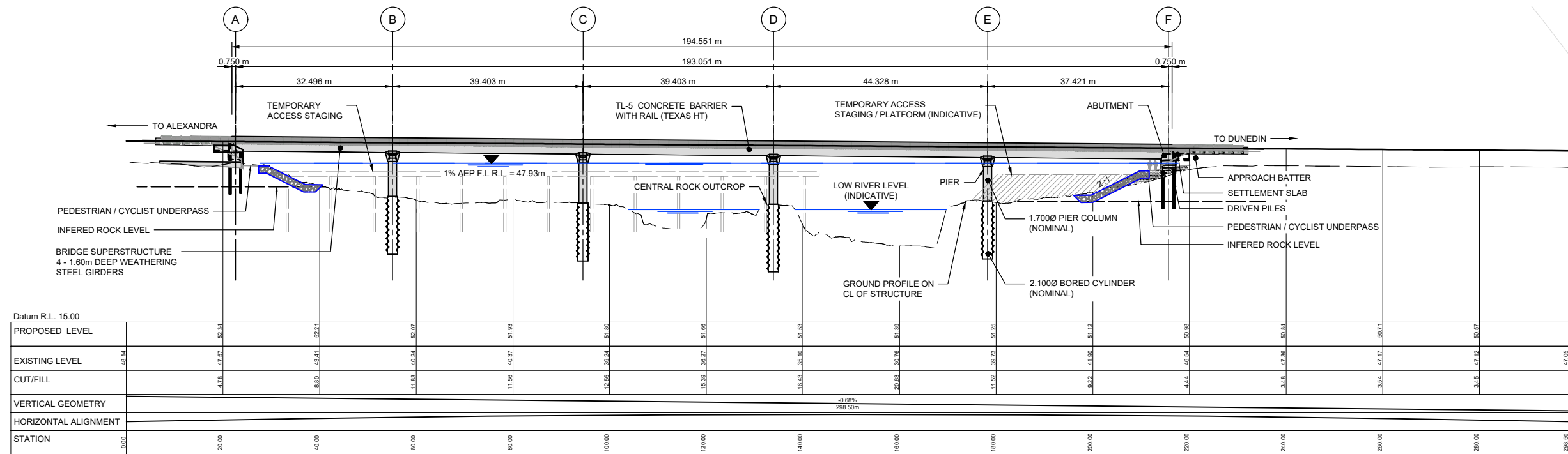
<b>wsp   OPUS</b>	
Alexandra Office +64 3 440 2400	PO Box 273 Alexandra 9340 New Zealand
Designed B MULHOLLAND	Approved M DAVIES
Drawn B MULHOLLAND	Approved Date 14/10/2019
Scales A1 1:100 (A3 1:200)	

Project NZ TRANSPORT AGENCY SH8 BEAUMONT OTAGO RS 401 / 6300 NEW BEAUMONT BRIDGE	
Sheet TYPICAL CROSS SECTIONS - S7 TO S10	
Project No. 6-CT012.00	Sheet No. C09
Revision B	





**LAYOUT PLAN**  
SCALE: 1:500 (DIMENSIONS ON BRIDGE CL)



**BRIDGE CENTRELINE LONGSECTION**  
CH: 0.00 to 298.50  
Scale 1:500 Hz. 1:500 Vt.

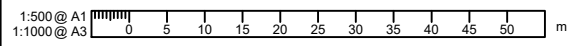
**DOWN STREAM ELEVATION (DIMENSIONS ON BRIDGE CL)**  
SCALE: 1:500

ISSUED FOR RMA APPROVALS

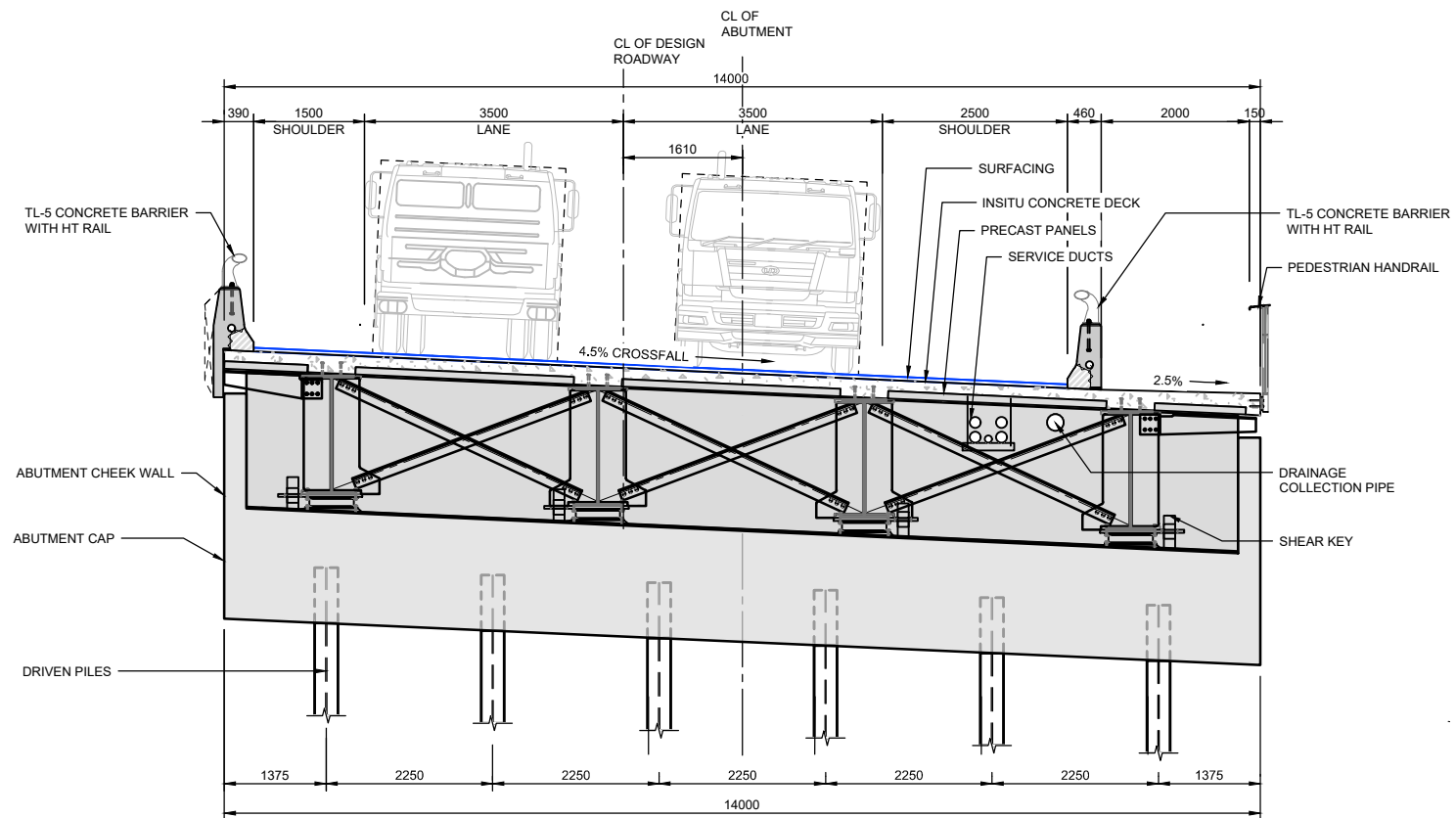
Revision	Amendment	Approved	Revision Date
A	STRUCTURAL OPTIONS REPORT	M.D.	04/19
B	ISSUED FOR RMA APPROVALS	M.D.	08/19



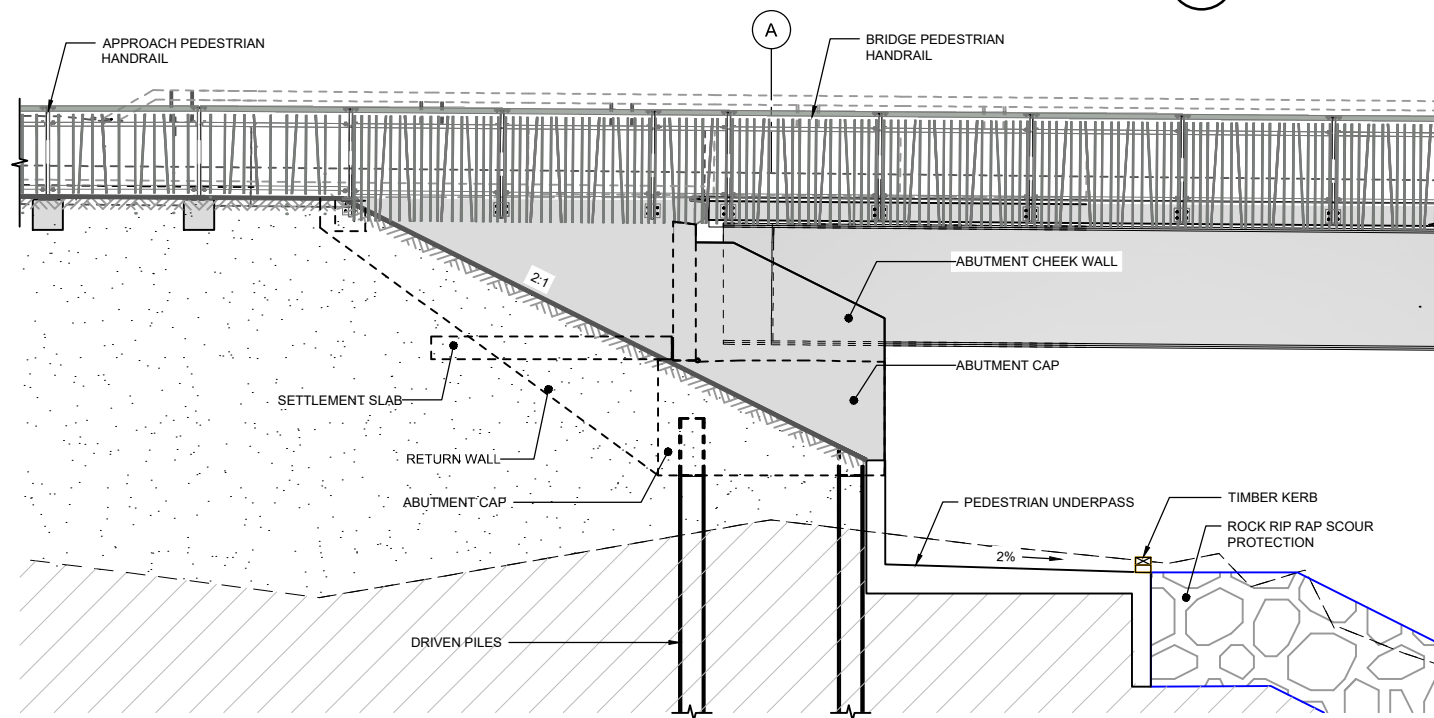
<b>wsp   OPUS</b>		Project	
Christchurch Office +64 3 363 5400		NZ Transport Agency BEAUMONT, OTAGO SH8 BEAUMONT BRIDGE REPLACEMENT	
Designed	Approved	Approved Date	
J.JENNINGS	M. DAVIES	08/19	
Drawn	Scales	Project No.	
P. JANSSENS	AS SHOWN	6-CT012.00	
		Sheet No.	Revision
		P01	B



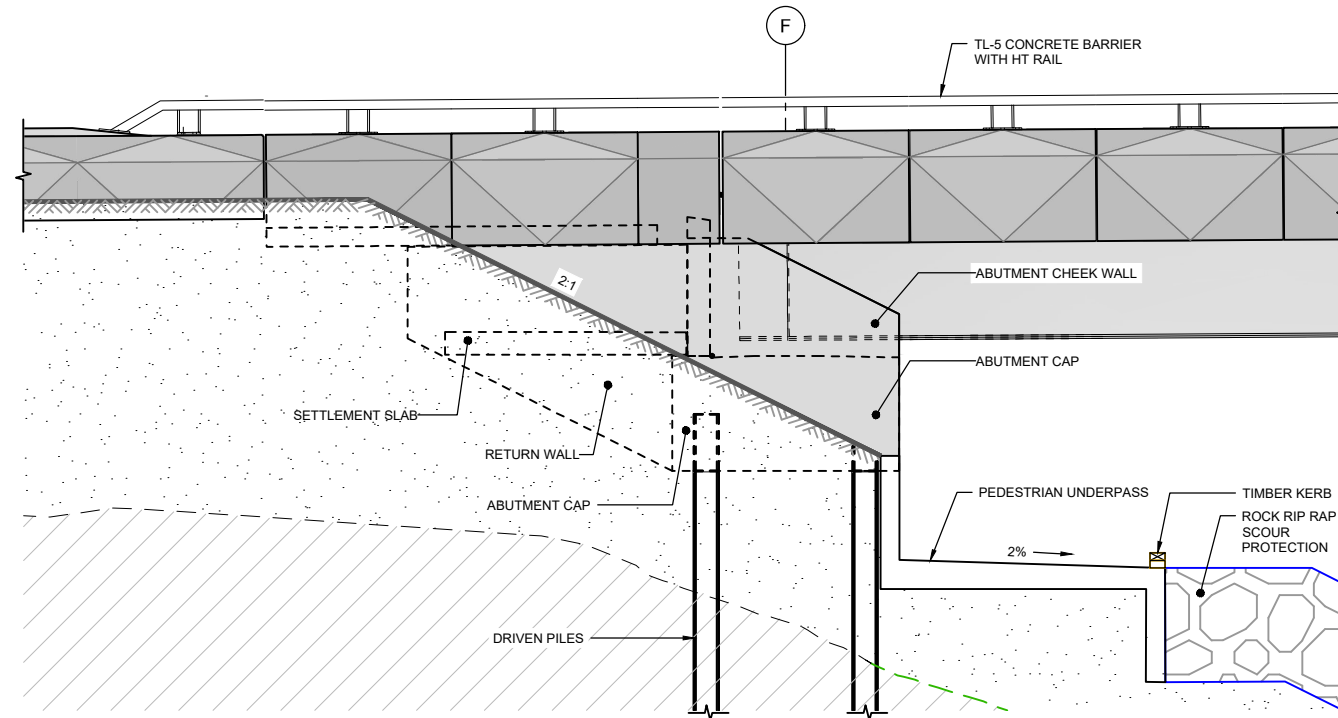
NOTE:  
BARRIER AND HANDRAIL ARCHITECTURAL  
DESIGN INDICATIVE AND SUBJECT TO CHANGE



1 ABUTMENT F ELEVATION  
P01 SCALE: 1:50 (UNDERPASS NOT SHOWN)



2 ABUTMENT A END VIEW  
SCALE: 1:50 (DOWNSTREAM)



3 ABUTMENT F END VIEW  
P02 SCALE: 1:50

ISSUED FOR RMA APPROVALS

Revision	Amendment	Approved	Revision Date
A	STRUCTURAL OPTIONS REPORT	M.D.	04/19
B	ISSUED FOR RMA APPROVALS	M.D.	08/19
C	NOTE ADDED	M.D.	10/19



**WSP | OPUS**  
Christchurch Office PO Box 1482  
+64 3 363 5400 Christchurch 8140  
New Zealand

Project  
NZ TRANSPORT AGENCY  
BEAUMONT, OTAGO  
SH8 BEAUMONT BRIDGE REPLACEMENT

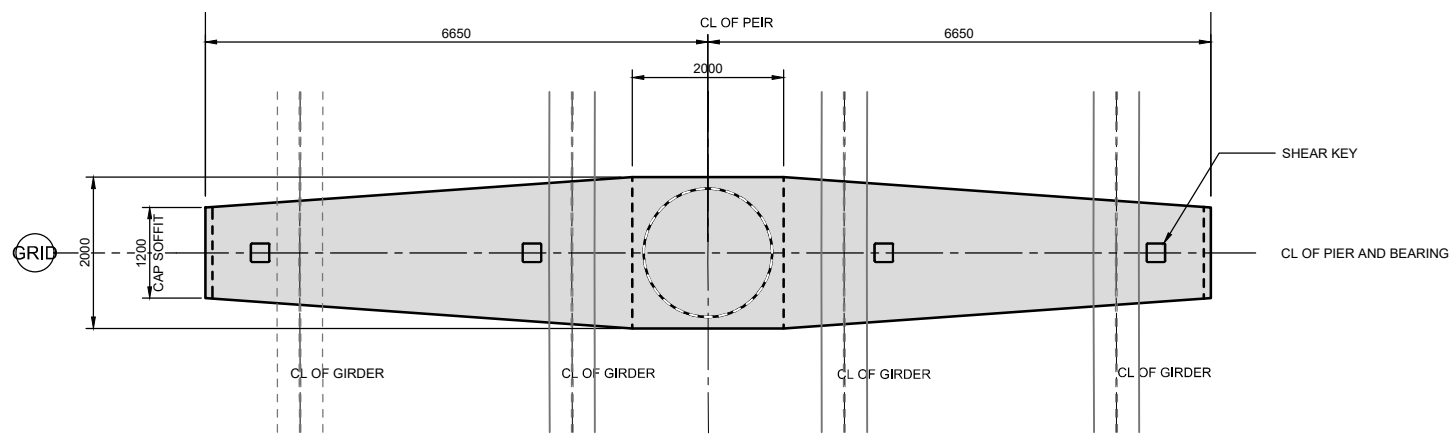
Designed J.JENNINGS Approved M.DAVIES Approved Date 08/19  
Drawn P.JANSENS Scales AS SHOWN

Sheet  
GENERAL ARRANGEMENT  
ABUTMENT

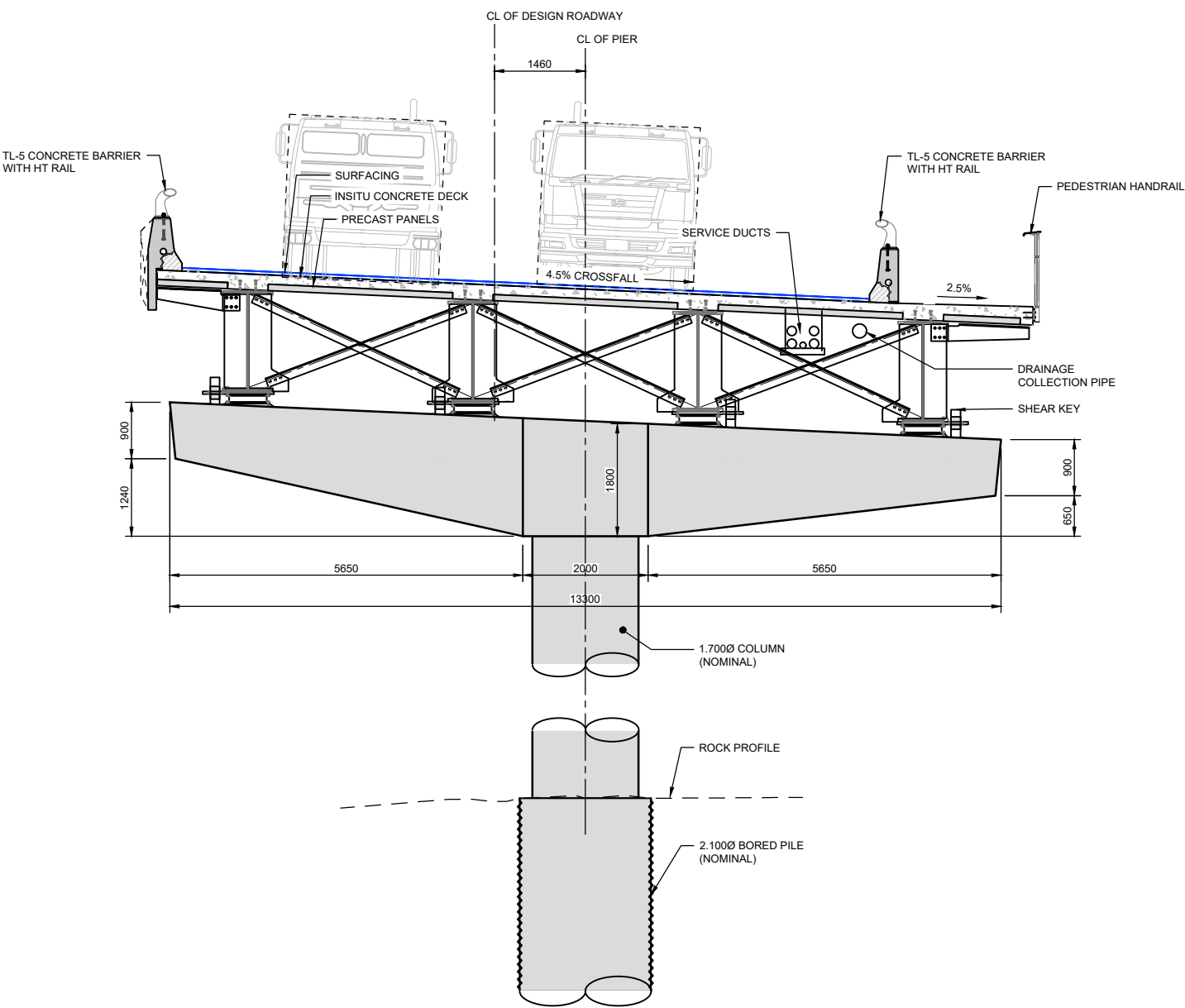
Project No.  
6-CT012.00

Sheet No. P02  
Revision C

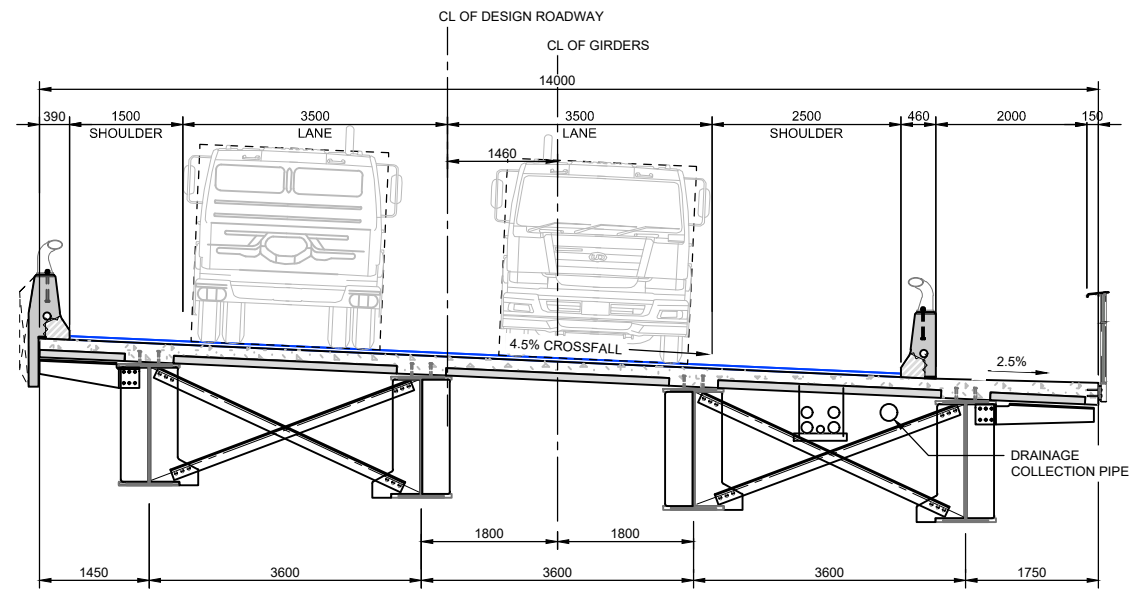
1:50 @ A1  
1:100 @ A3



**PIER PLAN**  
SCALE: 1:50 (SUPERSTRUCTURE NOT SHOWN)



**4 PIER ELEVATION - TYPICAL**  
SCALE: 1:50



**5 MID SPAN ELEVATION**  
SCALE: 1:50

ISSUED FOR RMA APPROVALS

Revision	Amendment	Approved	Revision Date
A	STRUCTURAL OPTIONS REPORT	M.D.	04/19
B	ISSUED FOR RMA APPROVALS	M.D.	08/19



**WSP | OPUS**  
Christchurch Office  
+64 3 363 5400  
PO Box 1482  
Christchurch 8140  
New Zealand

Designed	Approved	Approved Date
J. JENNINGS	M. DAVIES	08/19
Drawn	Scales	
P. JANSSENS	AS SHOWN	

Project	
NZ TRANSPORT AGENCY BEAUMONT, OTAGO SH8 BEAUMONT BRIDGE REPLACEMENT	
Sheet	
GENERAL ARRANGEMENT PIER AND MID SPAN ELEVATIONS	
Project No.	6-CT012.00
Sheet No.	P03
Revision	B

1:50 @ A1  
1:100 @ A3