



Punakaiki shared path project



WHAT IS HAPPENING?

As part of the Dolomite Point Redevelopment Project at Punakaiki, Waka Kotahi NZ Transport Agency is seeking feedback on plans for approximately 4km of new shared cyclist and pedestrian pathway, linking key attractions south and north of Dolomite Point.

The proposed shared path is designed with the community and visitors in mind - so we can move in a safe, enjoyable and vehicle-free manner between Punakaiki localities.

As the proposed shared path is adjacent to State Highway 6, Waka Kotahi is leading the design on either side of Dolomite Point. The design for the shared path through the Dolomite Point section will be led by the Redevelopment Project Team.

Waka Kotahi anticipates construction work on the highway sections of the shared path can begin ahead of the main redevelopment project, from approximately mid-to late 2020.

HAVE YOUR SAY

On the other side of this page is an overview of the proposed design for the SH6 Punakaiki shared path.

You can see these proposed plans in more detail online by viewing the project maps in the publications section on the project web page www.nzta.govt.nz/punakaiki

Before we make any decisions on the final design, we'd like to hear your thoughts first.

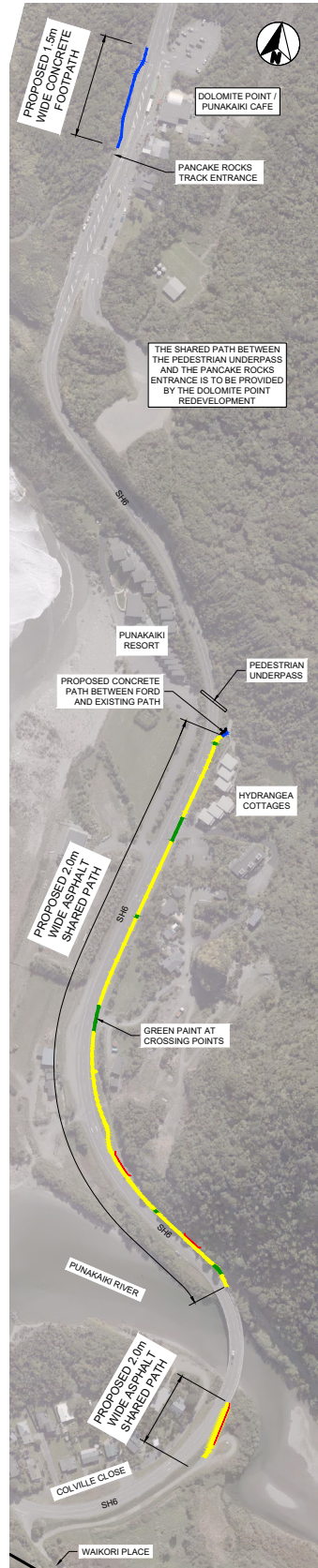
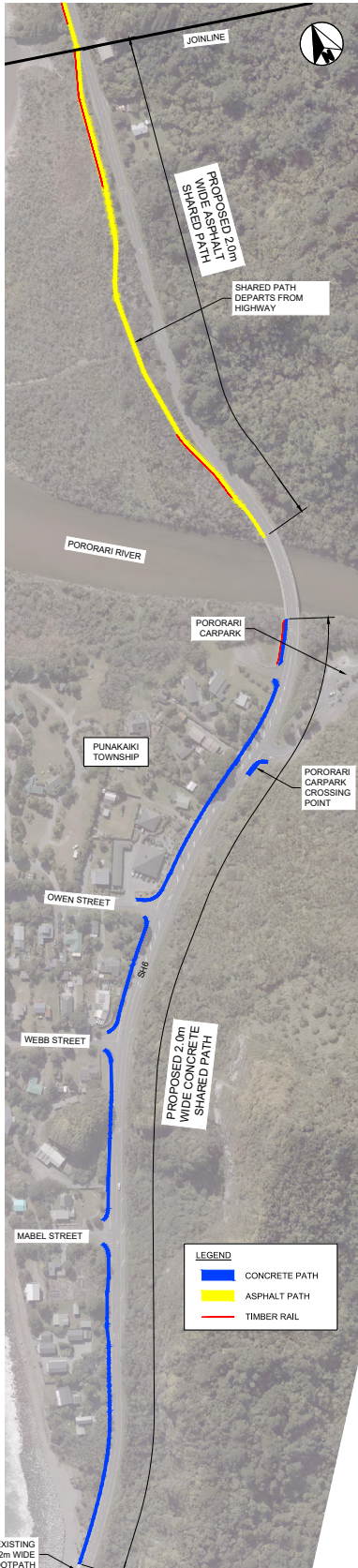
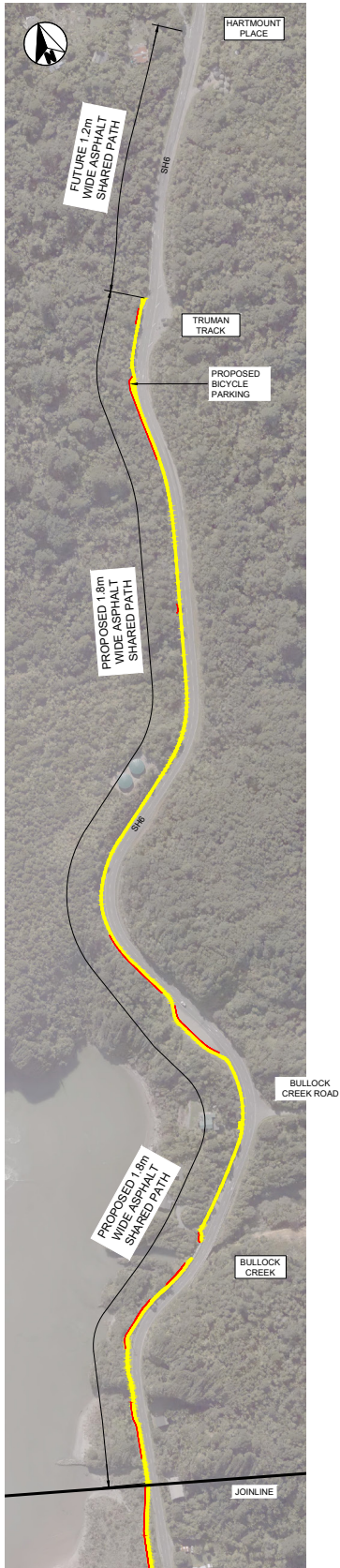
Have we got the design right? Would you like to see some changes made?

Send us your feedback via email punakaiki@nzta.govt.nz, post your comments on the interactive map at www.nzta.govt.nz/punakaiki or for inquiries, please phone 03 964 2910.

Please provide your feedback by Friday 17 July 2020.

Waka Kotahi is a proud partner of the Dolomite Point Redevelopment Project in Punakaiki, on the South Island's West Coast.

Supported by the Provincial Growth Fund, the project aims to significantly improve visitor infrastructure and the visitor experience at Dolomite Point.



Proposed Punakaiki shared path - Truman Track to Waikori Place



MORE INFORMATION

For more information on the SH6 Punakaiki shared path project, visit our website www.nzta.govt.nz/punakaiki